

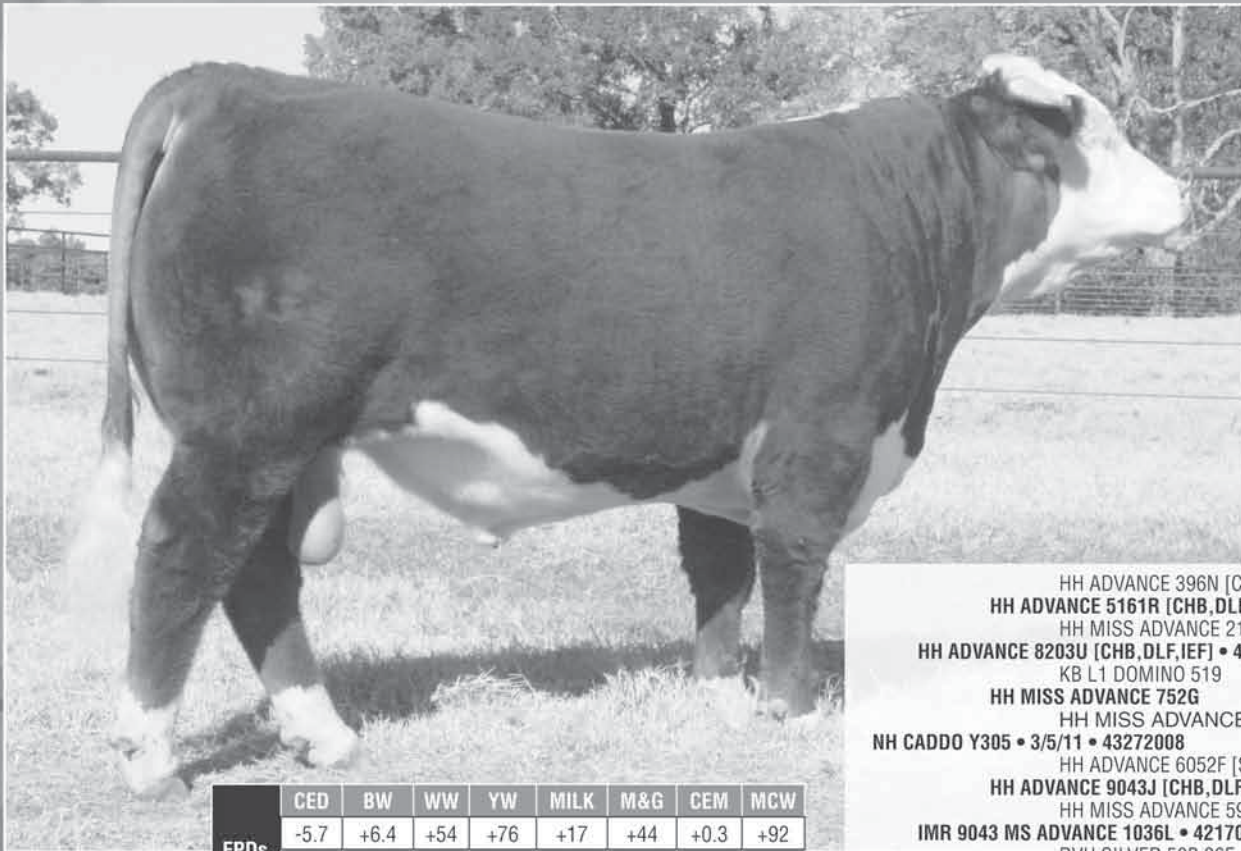
TEXAS HEREFORD

The Official Publication of the Texas Hereford Association

December 2012



He sells! Lot #15



EPDs	CED	BW	WW	YW	MILK	M&G	CEM	MCW
	-5.7	+6.4	+54	+76	+17	+44	+0.3	+92
EPDs	SC	FAT	REA	MARB	BMI	CEZ	BII	CHB
	+1.0	+0.001	+0.04	+0.19	+\$18	+\$10	+\$18	+\$24

HH ADVANCE 396N [CHB,DLF,IEF]
 HH ADVANCE 5161R [CHB,DLF,IEF]
 HH MISS ADVANCE 2118M [DLF,IEF]
 HH ADVANCE 8203U [CHB,DLF,IEF] • 42897201
 KB L1 DOMINO 519
 HH MISS ADVANCE 752G
 HH MISS ADVANCE 454D
 NH CADDY Y305 • 3/5/11 • 43272008
 HH ADVANCE 6052F [SOD,DLF,IEC]
 HH ADVANCE 9043J [CHB,DLF,IEC]
 HH MISS ADVANCE 594E
 IMR 9043 MS ADVANCE 1036L • 42170503
 RVH SILVER 50B 26E
 IMR SILVER MISS 8011
 IMR MSPAT 2003 1ET



NOLAN HEREFORDS

Scott, Alise, Ilissa, Bethany & Audrey
 1950 Skylark Rd • Gilmer, TX 75645 • nolanherefords@aol.com
 Res. 903-797-6131 • Cell: 903-738-5636
 Steve Decker, Herdsman • 254-582-4310
 www.nolanherefords.com

SELLING

**44th Annual Premium Whiteface
Replacement Female Show and Sale
Sunday, February 3, 2013**



**10 Head
of Yearling Baldie Heifers**
will sell Open

Cattle for sale at the ranch year round.

Visitors always welcome.

AHA Golden Hereford Breeder

Herefords Since 1959

CURTIS YOUNTS & SON

Cell: 254/760-0243 • Res: 254/939-6492
3648 Elmer King Rd. • Belton, TX 76513

TEXAS HEREFORD

Official publication of the Texas Hereford Association

December 2012 • Vol. 62, No. 2

Mission Statement

The Texas Hereford Association will provide the leadership to unite, foster and protect the interest of the Hereford breed; and promote fairly the production and consumption of Hereford beef universally.

Features

- 8 2012 American Royal
Show Results
- 12 NAILE Show Report
- 12 Fall Sale Results
- 14 A.I. Directory
- 19 Having the Right Attitude
Letter to the Juniors

Departments

- 4 Tailgate Talk
- 6 Bulletin Board
- 6 Obituaries
- 19 Auxiliary News
- 19 TJHA News
- 27 Calendar of Events
- 28 Cattle for Sale
- 28 Advertisers Index

On The Cover

Jackson Chastain wanted to help his dad tag calves at the Mockingbird Hill Ranch. Photo taken by Jack Chastain.

THE TEXAS HEREFORD (ISSN 0744-4761) (USPS 616-680) is published monthly except for the month of July by the Texas Hereford Association.
POSTMASTER: Please send change of address notices to The Texas Hereford, 4609 Airport Frwy., Ft. Worth, TX 76117. Periodical postage paid at Ft. Worth, TX.
Subscription rate: One Year, \$15.00.
Advertising rates on request. Contributions to the editorial pages are welcome, but the magazine cannot be responsible for the return of unsolicited material.

Texas Hereford Association Officers

Jay Wright, Morgan, president
Gary Buchholz, Waxahachie, president-elect
Terri Barber, Austin, vice-president
Chad Breeding, Miami, vice-president
Dr. John Mehaffey, Burleson, vice-president
Jack Chastain, Fort Worth, secretary-treasurer
Scott Nolan, Gilmer, past-president

Executive Committee

John Dudley, Comanche
Bill McInnis, May
Berry Summerour, Houston
John Winsauer, Beeville
Curtis Younts, Jr., Belton

Directors

Randy Barnes, Granbury
Pete Case, Eldorado
Sue Darnell, El Paso
Mark Ebeling, Cleburne
Dusty Greaves, Coleman
Kevin Hartley, Madisonville
Larry Johnson, Abilene
Steve Lesley, Stephenville
Bill McInnis, May
Donlie McMullin, Copperas Cove
Jim Nelson, Plano
Steve Noack, Rockdale
Kyle Perez, Nara Visa, NM
Brie Whitehead Perks, Fort Worth
James Schmidt, Mason
Keith Schmidt, Gonzales
Ron Smith, Fredericksburg
Neal Spencer, North Richland Hills
Tom Walker, LaGrange
John Winsauer, Beeville
Wayne Baize, Ft. Davis
Dr. M.C. Baker, Granbury
Dennis Braden, Stamford
Swasey Brainard, Pampa
Austin Brown, III, Beeville
James Dangelmayr, Muenster
Harry Dudley, Comanche
John Dudley, Comanche
James Floyd, Wink
Bradley Hale, Miami
Ira Lee, Willow City
Joshua Martin, Floresville
Brady Mimms, Lorenzo
Jane Murphey, Meridian
Dan Nance, Haslet
David Neal, Ft. McKavett
Jackie Pullen, Rockwall
Monroe Schatte Jr., Giddings
J.D. Schmidt, Hondo
Curtis Younts, Jr., Belton
Jimmy Atlas, Grandview
Dr. Stephen Coates, San Angelo
Matt Copeland, Nara Visa, NM
Tom Dudley, Comanche
Mark Ellison, College Station
Mike Fuston, Turkey
Jerry Lewis, Valley View
Dimitri Mataragas, Athens
David Moore, Hamlin
David Morris II, Marquez
J.D. Ragland, Canyon
E.C. Rosson, Milford
Ron Schlegel, Olney
Dr. Mark Steele, Graham
Reed Stewart, Sterling City
Brad Stuart, Roby
Berry Summerour, Houston
Lee Terrell, Sherman
Susan Turner, Rochester
Lynn Weinheimer, Stonewall

TEXAS HEREFORD

4609 Airport Freeway • Fort Worth, TX 76117
www.texashereford.org
817/831-3161 • Fax: 817/831-3162
texashereford@sbcglobal.net
Jack Chastain, *Manager/Editor*
Penni Hiles, *Assistant Editor & Circulation*
Park Place Enterprises, *Design*
Lee Chastain, *Photo Production*

AFFILIATED WITH

LPC – Livestock Publications Council
National Cattlemen's Beef Association
American Hereford Association
Texas & Southwestern Cattle Raisers Association
Texas Purebred Cattle Alliance

FT. WORTH NATIONAL
COWTOWN
Select Sale

SUNDAY, FEBRUARY 3, 2013



LOT #3 • W4 18U Outcross 107Z
 3-1-12 • P43336746

Sire: Golden Oak Outcross 18U [DLF,HYF,IEF]
Dam: C Ms Pure Gold 5007 ET

BW +5.0 / WW +60 / YW +98 / Milk +19 / M&G +49



LOT #14 • W4 955 Domino 138Y 3ET
 3-19-11 • 43211704

Sire: CL 1 Domino 955W [DLF,HYF,IEF]
Dam: C Ms Pure Gold 5007 ET

BW +3.1 / WW +51 / YW +85 / Milk +25 / M&G +50



LOT #26 • W4 Outcross Diva 102Z
 3-1-12 • P43336747

Sire: Golden Oak Outcross 18U [DLF,HYF,IEF]
Dam: C Ms Pure Gold 5007 ET

BW +5.0 / WW +60 / YW +98 / Milk +19 / M&G +49

Also selling 3 Pens of Hereford Heifers • 2 Pens Bred Hereford Heifers • 1 Pen Hereford Pairs
 in the Whiteface Replacement Female Sale on February 3, 2013



Jay Wright,
 General Manager



Jeff Chaffin,
 Purebred Cattle Manager

W4 RANCH

BOSQUE COUNTY SINCE 1961

Registered Herefords and Certified F-1s
 Jay Wright, General Manager • Office: 254-635-4444
 Cell: 254-396-2584 • e-mail: jay@w4ranch.com
 Jeff Chaffin, Purebred Cattle Manager
 254-396-2785 • jeff@w4ranch.com
 P. O. Box 9 • Morgan, Texas 76671
 www.W4ranch.com
 Joe Walker Land & Cattle, LTD

Most everyone in Texas is rejoicing to see the end of 2012 and wishing for a better year for 2013. Even with another record drought, heat and more cattle liquidations, our fall sales and private treaty sales held steady or better than last year. The demand and renewed interest in Hereford genetics is encouraging for all Hereford breeders and members of

THA. I congratulate those who sold cattle and thank the buyers and wish them well with their purchases.

December and the time between Thanksgiving and Christmas and the New Year is always a time to pause and reflect on the past year and plan for the upcoming year. I am most thankful for good health and the opportunity to work for THA. I wish

everyone a healthy and happy holiday season and prosperous new year.

This organization is strongly dependent on our officers, directors, members, sponsors, and friends in both time and funds. THA is involved in many activities in the next few months and has many people to thank for their support. Your executive committee is most concerned about keeping our organization in a strong financial position. We have survived 2012, but need to have a better 2013. THA will again offer some tremendous donations for fund raisers during our Fort Worth activities. On Sunday during our 44th Annual Whiteface replacement heifer sale we will be selling the Heritage Pen of heifers from our commercial Hereford members for the twelfth year. We owe the donors of this pen a huge thank you for their generosity. I encourage members to help solicit buyers for this pen. I know how good the heifers will develop into cows. We plan a silent auction at the social and are in need of a few quality items from all officers and directors. THA is greatly appreciative for these contributions. I also want to thank the consignors to both the commercial heifer and Cowtown Select sales. Their quality cattle have a great impact on showing our breed to the general public. The donors for the heifer scholarship and champion awards are also vital to the success of the shows. These members have made a giant effort to ensure great things for THA and Hereford cattle. The rest of THA needs to step up by attending and either buying or bringing buyers to the sales and shows.

Our web site continues to show results, especially our cattle for sale page. We hope more members will avail themselves to this marketing tool. We have plans to expand this service in 2013.

I encourage everyone to attend our annual meeting and activities at Fort Worth and all other activities in 2013. Best wishes for "Happy Holidays" and a prosperous and wet new year. ★

McMullin Ranch

**When bulls like this HEREFORD
are crossed on black cows...**



**...the results are great
heifers like these!**



SEE US FOR YOUR HEREFORD BULLS!



McMullin Ranch

Donlie and Linda McMullin
1005 Perryman Creek Rd.
Copperas Cove, TX 76522

254-547-0172 • dboydmc@yahoo.com

Midcontinent Livestock Supplements Forage Enhancing Program

*Recondition the
cows after
weaning.*

MLS #1 SUPPLE-LIX

All natural protein tub with high vitamin and trace minerals levels for cattle needing both protein and minerals on roughage diets.

*Get calves off
to the right
start.*

MLS #5 STRESS

An all natural protein, energy, vitamin, and trace mineral tub for young cattle during weaning, shipping, or stress. Has Availa[®]4 from Zinpro[®]

www.mlstubs.com



Kyle Latham---254-715-2162



THE BRAND TO TRUST

Red Chain Cattle Cubes

for the profit minded producer

- Competitively priced
- All natural
- High energy
- High digestibility
- Trace minerals with chelates
- Not loaded with filler salt and rock



Available in bulk, 1500# bulk bags, & 50# sacks at 16% 20% 21% 30% & 38% protein levels.

Check our website or give us a call to find a Red Chain Feeds dealer near you.

Gorman Milling Co., Inc.
Gorman, TX (800) 588-2252
REDCHAINFEEDS.COM



SOUTH TEXAS HEREFORD ASSOCIATION

SPRING SALE

Offering Hereford Bulls, Females, True F₁ Females, Registered Brahman Bulls & Brahman Females

MARK YOUR CALENDARS!

Saturday, February 2, 2013, at noon

BEEVILLE LIVESTOCK COMMISSION, INC.

2218 US HWY 59E, BEEVILLE, TEXAS

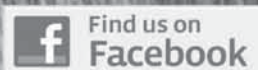
FOR SALE OR CONSIGNMENT INFORMATION CONTACT:

Robbie Morish, SECRETARY,

(361) 920-0012 or info@southtexashereford.org

www.southtexashereford.org

AUCTIONEER: LEO CASAS, III



BROUGHT TO YOU BY:





Copeland Elected AHA President

Cliff Copeland, Nara Visa, NM, was announced as the new president of the American Hereford Association (AHA) during the Annual Membership Meeting in Kansas City, Mo., Nov. 3.

Steve Lambert, Oroville, CA, was selected to serve as the 2013 AHA vice president.

Completing their terms on the AHA Board were outgoing president, David Breiner, Alma, KS; Paul Funk, Copperas Cove, TX, and Jimmie Johnson, Clinton, OK.

Delegates elected three new Directors during the membership meeting. Curtis Curry, McAlester, OK; Jonny Harris, Screven, GA; and Sam Shaw, Caldwell, ID, will serve four-year terms on the 12-member Board. ★

THA Scholarships

The Foundation of the Texas Hereford Association will award \$1,000 scholarships to qualifying high school seniors and college freshmen. You may call the THA office to obtain information or go to www.texashereford.org and click on the youth link for THA Foundation scholarship requirements and instructions. Deadline for applying is January 15, 2013. The awards will be presented at the THA Annual meeting in Fort Worth, February 2, 2013. The THA's number is 817/831-3161. ★



2013 AHA Board: Pictured is the 2013 American Hereford Association (AHA) Board of Directors. Seated (l to r) are: Cliff Copeland, Nara Visa, NM, president; Steve Lambert, Oroville, CA, vice president; Dale Micheli, Ft. Bridger, WY; Marty Lueck, Mountain Grove, MO; and Craig Huffhines, Kansas City, MO, executive vice president. Directors standing (l to r) are: Keith Fawcett, Ree Heights, SD; Sam Shaw, Caldwell, ID; Jonny Harris, Screven, GA; Curtis Curry, McAlester, OK; Eric Walker, Morrison, TN; Fred Larson, Spring Valley, WI; Dale Venhuizen, Manhattan, MT; and David Trowbridge, Tabor, IA.

Attention Juniors: \$5,000 for Top Jr. in Fort Worth National Show

Funds have been committed to award \$5,000 to the top placing junior heifer and \$2,500 to second place junior heifer (if funds permit) that is exhibited at the National Hereford Show in Fort Worth. A second scholarship will be awarded if \$5,000 is exceeded. Exhibitor must be at the halter of his/her own heifer as well as be eligible to show in the junior show the previous week. The heifer must be eligible to show for Grand Champion (no Cow/Calf). This is an incentive to encourage junior exhibitors to exhibit at the open show on February 4, 2013. To be eligible for the award, the exhibitor must enter the open show by the November 15th deadline. The exhibitor must be a member of the Texas Junior Hereford Association.

The sponsors of this award are committed to making this an annual event and hope to grow the fund to increase the prize as well as create a special belt buckle for the event. Anyone wishing to join this effort should contact Jack Chastain at the THA office. ★

Judges Selected for 2013 Southwestern Exposition & Livestock Show

Junior Heifers

Watt Arena, West Ring:

Ryan Cotton, Ponce Inlet, FL

Polled Hereford:

Saturday, Jan. 26, at 1:00 p.m.

Hereford:

Saturday, Jan. 26, following Polled Hereford

Pen of 10 Commercial Hereford Heifers

Pen Area/Richardson Bass Bldg.

Mr. David Neal, San Angelo, TX

Mr. Wylie Taliaferro, Rosser, TX

Mr. Josh Kinslow, Hearne, TX

Saturday, Feb. 2, at 9:00 a.m.

National Hereford and Polled Hereford Shows

Watt Arena

Randy and Jamie Mullinix, Toulon, IL

Monday, Feb. 4 at 8:00 a.m.

(classes to be judged concurrently in an alternating format)

Junior Hereford and Polled

Hereford Steers

Watt Arena

Dr. Mark Johnson, Stillwater, OK

Thursday, Feb. 7 at 8:00 a.m. following Angus

Sand Hills Hereford Scholarship

Any TJHA member who is a graduating senior and has exhibited at the Sand Hills Hereford Show is eligible to apply for one of the two \$1,000 scholarships awarded to heifer and steer exhibitors. For more information contact Chelli Evans at the Sand Hills Hereford and Quarter Horse show office at 432/366-3951. ★

West Texas Scholarship Info

Information, criteria and scholarship application regarding the West Texas Hereford Association Curly Hays Memorial Scholarship can be obtained on-line at www.cfabilene.org under scholarships and then finding West Texas Hereford Association Curly Hays Memorial Scholarship. The deadline for the scholarship is April 1, 2013. If applicants have questions or are unable to obtain on-line call Twalla Simmons at 325-893-5993 or 325-669-1692 and the information will be mailed. ★

Brownlee Feild

Brownlee Feild 96 of Burnet passed away November 11, 2012 in Lampasas, TX.

Brownlee was born on January 26, 1916 to Ira and Blanche Everett Field at Sage in Burnet County. He attended school at Bethel then finished high school at Lake Victor. He was a member of Lake Victor Baptist church. He was deacon and served as chairman of the building committee. He drew up the blueprints for the new church building built in 1950.

Brownlee was an avid baseball fan and the highlight in his younger days was when he signed a contract with the St. Louis Cardinals to attend spring training in 1937. Unfortunately, his baseball career was short lived but continued to idolize Babe Ruth, Lou Gehrig, Mickey Mantle and Hank Aaron.

In 1938, Brownlee married Merle Farquhar and they had a son, Jack

and a daughter, Jan. Brownlee and Merle started a registered Turkey operation. They had their own incubators and 10,000 egg capacity and latest in brooding equipment. In 1956, they sold the turkey business after Brownlee was appointed Burnet County Tax Assessor-Collector to an unexpired term of office. He was a member of the Texas Collector-assessor's Association and also served on the Burnet ISD school board. He also served a number of times on various county and state agricultural committees.

In 1963, he and Merle established a registered herd of Hereford cattle which Jack still maintains, sometimes importing herd bulls and breeding stock from Wyoming, Montana and the Dakotas. He was a member of the American Hereford Association and Texas Hereford Association.

Survivors are son, Jack and Vivian Feild and daughter Jan and Ron Whisenant all of Burnet. Grandchildren Mort and Barbara Feild Smith, Jack Jr. and Verna Feild and Ricky Feild all of Katy. Great grandchildren, Curtis Smith, Dwain Sutton, Callie Smith, Ashley Feild, Cassidy Feild, Justin Feild and Jace Feild also of Katy. ★

John L. Kuykendall

John Kuykendall, 72, passed away on Friday, November 23, 2012, in Llano, Texas.

John was born in Temple, TX, on September 4, 1940, to James and Zudora Kuykendall and was reared on the family ranch outside of Cherokee, TX in San Saba County. John graduated from Cherokee High School and enrolled in Tarleton State University. He transferred to Texas A&M College and graduated with a Bachelor of Science Degree in Animal Science in 1963. That same year he married his high school sweetheart, Patricia Howell, on July 13, 1963. He continued his education at Texas A&M University and graduated with a Master of Science degree in Animal

Science in 1965. John loved Texas A&M University and was on the wool, meats, and livestock judging teams during his time in college.

John enjoyed a 31-year career with Texas AgriLife Extension Service first as an assistant agent in Jim Wells County and then for 29 years in Llano County. He was honored by Extension in November 1983 with the agency's highest award, the Superior Service Award, for his leadership throughout the county and state. In 2007, John was inducted into the Llano Hall of Fame by the Llano Chamber of Commerce and the Llano Memorial Hospital for recognition of his service to Llano County. In 2009 John won the Cowboy of the Year Award from the Hill Country Livestock Raisers Association. He especially had a tender place in his heart for the 4-H and Youth Development program. He enjoyed helping youth purchase animal projects, clip and trim animals for show, and coached numerous state winning livestock judging teams. John and Patty were recognized with the Friend of 4-H Award in 2009 for their lifetime commitment to the 4-H and Youth Development Program.

Upon his retirement in 1995, John returned to carry on the work at Kuykendall Hereford Ranch, a ranch that has been in his family since 1878. It was a thrill for him that Kuykendall Ranch was designated as a Texas Century Ranch by the Texas Department of Agriculture and he loved sharing the family heritage and ranch history with family and friends.

John was a member, deacon, and Bible school teacher at the Church of Christ in Llano and Cherokee.

He is survived by his loving wife of 49 years, Patty Kuykendall; daughter, Lisa Whittlesey and husband Randel of College Station; son, Jeff and wife Veronica of Llano; grandchildren, Taylor Whittlesey, Cole Whittlesey, Case Kuykendall, Carson Kuykendall, Sydney Kuykendall and Harper Kuykendall; brother, Lovell Kuykendall and wife Sandra of Cherokee. ★



GRAND CHAMPION HEIFER • CHAMPION SENIOR HEIFER CALF
COMBINED JUNIOR SHOW
RRO TRM GRACE 1125 ET
Jacob Sims, Edmond, OK



RESERVE GRAND CHAMPION HEIFER • CHAMPION SENIOR HEIFER
COMBINED JUNIOR SHOW
BLL LCC SHE'S ALL GOOD 150
Marie Lock, Avon, IL

**2012 American Royal
Combined Junior Show
November 4, 2012
Judge: Mark Ebeling,
Cleburne, TX
96 shown**

Class 1 – Spring heifers, calved May 1-7, 2012; 4 shown
1 & Reserve Champion Junior Heifer Calf – Beacon Hill Nene 1204; 5/1/12; Madison Courtney, Pryor, OK
2 – Wildcat Electra Baby 214 ET; 5/7/12; Brett, Bailey & Riley Jones, Darlington, WI

Class 2A – Spring heifers, calved April 1-14, 2012; 4 shown
1 – KT's Lucy 21; 4/9/12; Kati Fehlman, Junction City, KS
2 – RST H Lucille 14Z ET; 4/2/12; Nicholas & Gabrielle Torrance, Media, IL

Class 2B – Spring heifers, calved Mar. 1-31, 2012; 8 shown
1 – Wildcat Precious 31Z ET; 3/27/12; Bailey, Brett & Riley, Lauren Jones
2 – Roudy Indigo 210; 3/14/12; Claire Roudabush, Spencer, VA

Class 3 – Junior heifers, calved Feb. 2-24, 2012; 5 shown
1 – Wildcat OC Patience 21Z ET; 2/16/12; Bailey, Brett & Riley, Lauren Jones
2 – RA Fine Wine 0212; 2/14/12; Reid Allen, Quincy, IL

Class 4 – Junior heifers, calved Jan. 1-27, 2012; 7 shown
1 & Champion Junior Heifer Calf – Purple SV Katniss 11Z ET; 1/27/12; Kagny Collins, Flanagan, IL

2 – JR CH Ms Riley 2001; 1/3/12; Cameron & Staci Curry, McAlester, OK

Class 5 – Winter heifers, calved Dec. 2011; 9 shown
1 – Langford's Lady 1325 ET; 12/6/11; Elise Hackett, Tuscola, IL
2 – Wildcat Twinkling Sky 117; 12/22/11; Bailey, Brett, Riley & Lauren Jones

Class 6A – Senior heifers, calved Oct. 1-Nov. 6, 2011; 7 shown
1 & Grand Champion & Champion Senior Heifer Calf – RRO TRM Grace 1125 ET; 10/17/11; Jacob Sims, Edmond, OK
2 & Reserve Champion Senior Heifer Calf – Langford's Lady 1277 ET; 10/26/11; Anna Krieger, Universal, IN

Class 6B – Senior heifer calves, calved Sept. 1-29, 2011; 10 shown
1 – LCS Hillary 921Y; 9/24/11; Laken & Ashton Lierle, Fort Cobb, Ok
2 – CB Ms Winchester 1101; 9/23/11; Taylor & Bryce Miller, Lees Summit, MO

Class 7A – Summer yearlings, calved July 11-Aug. 16, 2011; 3 shown
1 – H KH DD Lady Bailout 1501; 8/1/11; Stewart Skiles, Dalhart
2 – SHMT Tessa Time 72Y; 7/11/11; Peyton & Logan Schmitt, Nichols, IA

Class 7B – Summer yearling, calved May 4-June 24, 2011; 9 shown
1 & Champion Junior Heifer – KLD BCC Mindy Mouse 28Y ET; 5/25/11; Jordon Godeaux, Newton
2 & Reserve Champion Junior Heifer – Purple SM Wonder Woman 160Y; 5/13/11; Sydney Wisnefski, Wyoming, IL

Class 8A – Spring yearlings, calved Apr. 1-26, 2011; 10 shown
1 – BR CSF Breezy 1076 ET; 4/26/11; Hanna Brainard, Pampa
2 – KLD RW Lady Rolex D19; 4/2/11; Edy Brainard, Canadian

Class 8B – Spring yearlings, calved Mar. 1-30, 2011; 9 shown
1 – Purple Kags Lady Gaga 16Y; 3/1/11; Kagny Collins
2 – LH Miss Bailout 1137 ET; 3/27/11; Cash Langford, Okmulgee, OK

Class 9 – Junior yearlings, calved Jan. 17-Feb. 28, 2011; 10 shown
1 & Reserve Grand & Champion Senior Heifer – BLL LCC She's All Good 150; 2/4/11; Marie Lock, Avon, IL
2 – H Delhawk Liz 129 ET; 2/15/11; Stewart Skiles

Class 10 – Senior yearlings, calved Nov. 3, 2010; 1 shown
1 & Reserve Champion Senior Heifer – C&M New Mexico Lady 0091; 11/3/10; Joel Butler, Republic, MO

**2012 American Royal
Combined National Show
Kansas City, MO
November 4, 2012
Judge: Murray Andrews,
Moosejaw, Sask.
249 shown**

Class 1 – Spring heifers, calved May 1-20, 2012; 6 shown
1 – Wildcat Electra Baby 214 ET; 5/7/12; Brett, Bailey, Riley Jones, Darlington, WI
2 – Beacon Hill Nene 1204; 5/1/12; Madison Courtney, Pryor, Ok

Class 2A – Spring heifers, calved Apr. 6-21, 2012; 4 shown
1 – JLB 9279 Holly 1209; 4/8/12; Jason & Lori Brown, Dwight KS
2 – SHR 4037 Savannah 210 ET; 4/7/12; Kevin Judge, Perkins, Ok

Class 2B – Spring heifers, calved Apr. 1-5, 2012; 7 shown
1 & Reserve Champion Spring Heifer Calf – Purple Adele 50Z; 4/4/12; Purple Reign Cattle Co., Toulon, IL
2 – C&M New Mexico Lady 2052; 4/2/12; Michael Perez, Nara Visa, NM

Class 2C – Spring heifers, calved Mar. 16-31, 2012; 10 shown
1 & Champion Spring Heifer Calf – MDP C&M New Mexico Lady 2043; 3/16/12; Michael Perez
2 – Wildcat Precious 31Z ET; 3/27/12; Bailey, Brett, Riley, Lauren Jones; Darlington, WI

Class 2D – Spring heifers, calved Mar. 6-15 2012; 7 shown
1 – Roudy Indigo 210; 3/14/12; Claire Roudabush, Spencer, VA
2 – KJ 968R Zsa Zsa 686Z ET; 3/8/12; Brooke, Brady, Ben Jensen, Courtland, KS

Class 2E – Spring heifers; calved Mar. 1-5, 2012; 9 shown
1 – Purple FBF Suri 24Z ET; 3/5/12; Purple Reign Cattle Co.
2 – GLM TGM 45S Gwen 245; 3/5/12; Seth McKay, Marysville, KS

Class 3A – Junior heifers, calved Feb. 15-29, 2012; 7 shown
1 – Purple SV Gypsy 27Z ET; 2/24/12; Korbin Collins, Flanagan, IL
2 – Wildcat OC Patience 21Z ET; 2/16/12; Bailey, Brett, Riley, Lauren Jones



*GRAND CHAMPION FEMALE
CHAMPION JUNIOR HEIFER CALF
COMBINED OPEN SHOW
C&M NEW MEXICO LADY 2008
Michael Perez, Nara Visa, NM*



*RESERVE GRAND CHAMPION FEMALE
CHAMPION INTERMEDIATE HEIFER
COMBINED OPEN SHOW
LCC PATTON KIWI 116 ET
Rhett Lowderman, Macomb, IL*



*GRAND CHAMPION BULL
CHAMPION YEARLING BULL
COMBINED OPEN SHOW
BPH 262 CHISM 515Y
Joel Butler, Republic, MO*



*RESERVE GRAND CHAMPION BULL • CHAMPION FALL BULL CALF
COMBINED OPEN SHOW
WORR OWEN TANKERAY Y79D ET
Jarrett Worrell, Mason • Rylee Owen, Mason
Miller Cattle Co., Douglas, WY*

Class 3B – Junior heifers, calved Feb. 2-14, 2012; 10 shown
1 & Grand Champion & Champion Junior Heifer Calf – C&M New Mexico Lady 2008; 2/7/12; Michael Perez
2 – LCC Merry-Lishes 232Z ET; 2/9/12; Lowderman Cattle Co., Macomb, IL

Class 4A – Junior heifers, calved Jan. 10-27, 2012; 10 shown
1 & Reserve Champion Junior Heifer Calf – Purple SV Coco 8Z ET; 1/15/12; Purple Reign Cattle Co.
2 – Purple SV Katniss 11Z ET; 1/27/12; Kagney Collins, Flanagan, IL

Class 4B – Junior heifers, calved Jan. 2-8, 2012; 10 shown
1 – Crane Glitter 213; 1/3/12; Crane Herefords, LaSalle, IL
2 – JR CH Ms Riley 2001; 1/3/12; Cameron & Staci Curry, McAlester, OK

Class 5A – Winter heifers, calved Dec. 1-31, 2011; 10 shown
1 – Wildcat Twinkling Sky 117; 12/22/11; Bailey, Brett, Riley, Lauren Jones
2 – SL Miss Extra 1201; 12/22/11; Steve Landt, Union, IA

Class 5B – Winter heifer calves, calved Nov. 6-20, 2011; 3 shown
1 – SHR 2001 63U Temptation 1121 ET; 11/3/11; Rhett Lowderman, Macomb, IL
2 – JC Miss Advance 169; 11/7/11; Jay & Cindy Brown

Class 6A – Senior heifers, calved Oct. 1-26, 2011; 9 shown
1 & Reserve Champion Fall Heifer Calf – WPF Notice Me 88X 1039 ET; 10/23/11; Whispering Pine Farms LLC, Kimball, MN
2 – Langford's Lady 1277 ET; 10/26/11; Anna Krieger, Universal, IN

Class 6B – Senior heifers, calved Sept. 14-29, 2011; 8 shown
1 & Champion Fall Heifer Calf – LCS Hillary 921Y; 9/24/11; Laken & Ashton Lierle, Fort Cobb, OK
2 – RW KLD 122L Mindy Y3078 ET; 9/18/11; Kaine Warnken, Schulenburg

Class 6C – Senior heifers, calved Sept. 1-10, 2011; 8 shown
1 – RST NT Autumn 4G 25Y; 9/3/11; Nicholas Torrance, Media, IL
2 – RRO TRM Passion 1063 ET; 9/9/11; Stephen Lorenzen, Georgetown, IL

Class 7 – Late summer yearlings, calved July 11-28, 2011; 4 shown
1 – SHMT Tessa Time 72Y; 7/11/11; Peyton & Logan Schmitt, Nichols, IA
2 – H KH DD Lady Bailout 1501; 8/1/11; Stewart Skiles, Dalhart

Class 8A – Early Summer yearlings, calved May 16-June 24, 2011; 5 shown

1 & Reserve Grand Champion & Champion Intermediate Heifer – LCC Patton Kiwi 116 ET; 5/21/11; Rhett Lowderman, Macomb, IL
2 – KLD BCC Mindy Mouse 28Y ET; 5/25/11; Jordan Godeaux, Newton

Class 8B – Early summer yearlings, calved May 4-13, 2011; 6 shown
1 & Reserve Champion Intermediate Heifer – Purple SM Wonder Woman 160Y; 5/13/11; Sydney Wisniewski, Wyoming, IL
2 – BR Brandi Y103 ET; 5/12/11; Maxwell Cherry, Winthrop, IA

Class 9A – Spring yearlings, calved Apr. 1-26, 2011; 10 shown
1 & Reserve Champion Spring Yearling – Star KKH SSF Keyonna 318Y ET; 4/20/11; Gabrielle Torrance, Media, IL
2 – H Excel 1411 ET; 4/14/11; Cole Murphy, Houstonia, MO

Class 9B – Spring yearlings, calved Mar. 14-30, 2011; 6 shown



CHAMPION COW-CALF
CRR T31 JULIA 023
COMBINED OPEN SHOW
John Cornelius, La Salle, CO



RESERVE CHAMPION COW-CALF
COMBINED OPEN SHOW
ATLAS LDY 146 VICTORIA 40M 100
Precious Atlas, Grandview

1 – SHF Miss Timeless 108; 3/22/11; Melissa Grimmel, Jarrettsville, MD
2 – FTF Miss Revolution 1320Y; 3/14/11; Britney, Brooklyn, Brayde Adam, Lathrop, MO

Class 9C – Spring yearlings, calved Mar. 1-10, 2011; 8 shown
1 & Champion Spring Yearling Heifer – KJ DWE 968R Tori 457Y; 3/4/11; Brady Jensen, Courtland, KS
2 – H RW Flavia 1307 ET; 3/10/11; Riggan Stewart, Sterling City

Class 10A – Junior yearlings, calved Feb. 3-28, 2011; 8 shown
1 & Reserve Champion Junior Yearling – H Delhawk Liz 129 ET; 2/15/11; Stewart Skiles
2 – MCF S109 Pearl 10Y ET; 2/8/11; Amanda Bacon, Siloam Springs, AR

Class 10B – Junior yearlings, calved Jan. 1-29, 2011; 6 shown
1 & Champion Junior Yearling – BF Bar 1 Tainted 101Y; 1/3/11; Amy & Angela Phillips, Richmond, MO
2 – AF Miss Ginger II 1002 ET; 1/1/11; Morgan Lowderman, Macomb, IL

Class 11 – Senior yearlings, calved Nov. 3, 2010; 1 shown
1 & Champion Senior Yearling – C&M New Mexico Lady 0091; 11/3/10; Joel Butler, Republic, MO

Class 12A – Cow-Calf Pairs, calved Jan. 3-Apr. 20, 2010; 5 shown
1 & Champion Cow-Calf – CRR T31 Julia 023; 2/13/10; John Cornelius, La Salle, CO
2 – DM Dominette 020; 4/20/10; Kati Fehlman, Junction City, KS

Class 12B – Cow-Calf Pairs, calved Feb. 24, 2004-Oct. 5, 2007; 3 shown
1 & Reserve Champion Cow-Calf – Atlas Ldy 146 Victoria 40M 100; 10/5/07; Precious Atlas, Grandview
2 – C&M New Mexico Lady 7008; 1/18/07; Drew Perez, Nara Visa, NM

Class 14A – Spring bull calves, calved Apr. 1-18, 2012; 7 shown
1 & Reserve Champion Spring Bull Calf – ECR Who Maker 2502 ET; 4/9/12; Fawcetts Elm Creek Ranch, Ree Heights, SD
2 – LCC Final Drive 285; 4/2/12; Lowderman Cattle Co.

Class 14B – Spring bull calves, calved Mar. 1-30, 2012; 6 shown
1 & Champion Spring Bull Calf – LCX Helton Bolt 1212 ET; 3/25/12; Larry Crane, Mitchell, SD
2 – SHR Trail Boss 2K12 ET; 3/4/12; Sadler Herefords, Tryon, Ok

Class 15 – Junior bull calves, calved Feb. 1-9, 2012; 6 shown
1 – KTP C&M Legacy 2002; 2/1/12; Michael Perez
2 – K7 0145 Domino 1216 ET; 2/6/12; K7 Herefords, Lockridge, IA

Class 16 – Junior bull calves, calved Jan. 1-30, 2012; 11 shown
1 & Champion Junior Bull Calf – H GH About Time 239 ET; 1/18/12; Hoffman Herefords, Thedford, NE
2 & Reserve Champion Junior Bull Calf – DEP Platinum 122 ET; 1/28/12; Austin, Chance, Montana, A. Nick, Deppe, Maquoketa, IA

Class 17 – Winter bull calves, calved Nov. 1-Dec. 15, 2011; 3 shown

1 – WPF 488 34W Raptor 1042; 11/17/11; Whispering Pine Farms LLC, Kimball, MN
2 – Atlas Mr 66T Warrior 160Y ET; 12/15/11; Precious Atlas

Class 18 – Senior bull calves, calved Sept.-Oct. 6, 2011; 9 shown
1 & Reserve Grand & Champion Fall Bull Calf – Worr Owen Tankeray Y79D ET; 10/6/11; Jarrett Worrell, Mason; Rylee Owen, Mason; Miller Cattle Co., Douglas, WY
2 & Reserve Champion Fall Bull Calf – CB About Time 1109; 10/3/11; Cory Wood, Maysville, MO

Class 19 – Late summer yearling bulls, calved July 8-Aug. 28, 2011; 4 shown
1 & Champion Intermediate Bull – MCR Revolutions Domino 1211 ET; 8/26/11; Mill Creek Ranch, Alma, KS
2 & Reserve Champion Intermediate Bull – MCR Revolutions Domino 1219 ET; 8/28/11; Mill Creek Ranch

Class 21 – Spring yearling bulls, calved Mar. 7-Apr. 1, 2011; 6 shown
1 – LCX Unleashed Keepsake 1110 ET; 3/10/11; McInnis Cattle Co., May; Rockin W Polled Herefords, Schultenburg; Kirbie Day, Waxahachie; The Unleashed Syndicate, May
2 – BR Joe Domino 1014 ET; 3/7/11; Bowling Herefords, Blackwell, OK
Rylee Barber, Channing

Class 22A – Junior yearling bulls, calved Feb. 6-21, 2011; 5 shown
1 & Grand Champion & Champion Yearling Bull – BPH 262 Chism 515Y; 2/6/11; Joel Butler, Republic, MO

2 – CRR 719 Catapult 109; 2/16/11; Coyote Ridge Ranch, La Salle, CO
Class 22B – Junior yearling bulls, calved Jan. 9-25, 2011; 4 shown
1 & Reserve Champion Yearling Bull – CL 1 Domino 144Y 1ET; 1/9/11; Churchill Cattle Co., Manhattan, MT; Mark Cooper, Willow Creek, MT; Hoffman Herefords; Holden Herefords, Valier, MT
2 – DHD Turbo HH 1103; 1/19/11; Double Heart Diamond Cattle, Berwyn, NE

Class 23 – Senior yearling bulls, calved Sept. 22-Oct. 27, 2010; 2 shown
1 & Champion Senior Bull – KT's Allowance 01; 10/27/10; Kati Felhman
2 – H Outcross 0164 ET; 9/22/10; Vanderwork Herefords, Taloga, OK

Class 24 – Two-year-old bulls, calved Jan. 7-Apr. 22, 2010; 5 shown
1 & Reserve Champion Senior Bull – Crane Dynamic 0422 ET; 4/22/10; Split Oak Farm, Danvers, IL; Crane Herefords
2 – LCX He's A Truck 104 ET; 2/9/10; Larry Crane, Mitchell, SD; Jeff Gerlack, Stickney, SD; Keith Eichler, Aberdeen, SD; The Truck Syndicate, Mitchell, SD

Premier Exhibitor – C&M Herefords, Nara Visa, NM

Premier Breeder – Hoffman Ranch, Thedford, NE

Best 6 Head – C&M Herefords, Nara Visa, NM

Get-of-Sire – Lowderman Cattle Co., Macomb, IL



PREMIER EXHIBITOR AND BEST 6 HEAD
C&M Herefords, Nara Visa, NM



PREMIER BREEDER
Hoffman Ranch, Thedford, NE

Show Awards Presented

Hereford exhibitors were honored for showcasing their breeding programs at national and regional shows throughout the past year during the National Hereford Show at the American Royal in Kansas City Nov. 4.

Awards for champion Hereford show heifer, show bull and premier exhibitor were presented to exhibitors in each of four U.S. regions.

SOUTHWEST REGION

Horned Show Bull of the Year

— Gary and Kathy Buchholz, Waxahachie, TX; Jacqueline Rosson, Milford, TX; and Mallorie Phelps, Grandview, TX, with GKB EJE B627 Full Tank B927 ET.

Horned Show Heifer of the Year

— Cameron and Staci Ann Curry, McAlester, OK, with CH JR Judy 0040 ET.

Horned Premier Exhibitor — Curtis and Jackie Castle, Crawford, OK

Polled Show Bull of the Year — Jackie Pullen, Rockwall, TX, with PH 533P Shining Star 36X.

Polled Show Heifer of the Year — Kyra Stierwalt, Leedey, OK, with GO Ms Outcross X76.

Polled Premier Exhibitor — Star Lake Cattle Ranch, Skiatook, OK

Hereford Youth Presented \$36,000 in Scholarships

National Junior Hereford Association (NJHA) members were awarded \$36,000 in scholarships from the Hereford Youth Foundation of America (HYFA) during the American Hereford Association Annual Meeting Nov. 3 in Kansas City, MO.

Chandler Mulvaney, Opelika, AL, and Tyler Schultz, Haviland, KS, were awarded \$5,000 Bill and



Hereford royalty honored during the 2012 American Royal (l to r) are: Cara Cummings, Gilmer, Texas, Miss Congeniality; Bridget Beran, Claflin, Kan., second runner-up; MaKayla Rutt, Minden, Neb., first runner-up; Whitney Andras, Checotah, Okla., 2012-13 National Hereford Queen; and Amanda Bacon, Siloam Springs, Ark., 2011-12 National Hereford Queen.



Whitney Andras, from Checotah, Oklahoma, was crowned National Hereford Queen during the 2012 American Royal National Hereford Show in Kansas City.



Bethany Nolan of Gilmer was awarded the \$1,250 Larson Polled Herefords Scholarship and Shelby Rogers of Hamilton was presented with a \$1,250 HYFA Scholarship.

Jo Ellard Scholarships. Schultz also won the B.C. "Bud" Snidow Award sponsored by the National Hereford Women.

Keysto Stotz, Skiatook, OK, was awarded the \$5,000 Bob & Dolores Call Scholarship. Whitney Andras, Checotah, OK, was

presented the \$2,500 Whitehead/Rocking Chair Ranch Scholarship and the \$1,250 Gary Bishop Memorial Scholarship.

Morgann Gregory, Houstonia, MO, was awarded the \$2,500 Bob & Lucy Kube Scholarship, and Tamar Adcock, Assumption, IL, was

awarded the \$1,250 Jack & Donna Vanier Scholarship.

Seely Sayre, Arenzville, IL, was awarded the \$1,250 Blin Family Scholarship, and Jaime Hanson, Comfrey, MN, was awarded the \$2,500 Owen Family/Tennessee River Music Inc. Scholarship.

Hayley Miller, Thorntown, IN, was awarded the \$2,500 Ball Foundation/Cottonwood Springs Farm Scholarship, and Bethany Nolan, Gilmer, TX, was awarded the \$1,250 Larson Polled Herefords Scholarship.

Krissi McCurdy, El Dorado, KS, was awarded the \$1,250 Bar One Scholarship, given in honor of Ken Tracy, a fellow Hereford breeder who lost his battle with cancer last year. Four Hereford juniors were presented \$1,250 HYFA scholarships, including Brady Jensen, Courtland, KS; Cody Jensen, Courtland, KS; Kathleen Ochsner, Torrington, WY; and Shelby Rogers, Hamilton, TX.

Congratulations to all the scholarship winners.

Endurance, Mindy Top National Hereford Show in Louisville

RF Endurance 1301 ET won the bull show and RW KLD 122L Mindy Y3078 ET topped the female show at the North American International Livestock Exposition Thursday, Nov. 15, in Louisville, Ky.

Kyle Colyer, Bruneau, Idaho, judged the 260-head show.

RF Endurance 1301 ET was slapped grand champion after winning the yearling bull division. He is a March 2011 son of CRR About Time 743 owned by Richard Watson, Shady Valley, Tenn., and Rogan Hereford Farms, Rogersville, Tenn.

RW KLD 122L Mindy Y3078 ET, owned by Kaine Warnken, Schulenburg, Texas, won the grand champion female title after being named champion fall heifer calf. She is a Sept. 2011 daughter of Remitall Online 122L.

Texas exhibitors included: Dustin Theuret, Kenedy; Kirbie Day, Waxahachie; McInnis Cattle Co., May; GKB Cattle, Waxahachie; Cole Venable, Channing; Hannah Brainard, Channing; Edy Brainard, Canadian; Josh Dugger and Charles Holloway, Gorman; Rockin W Ranch, Schulenburg; Barber Ranch, Channing.

Other champions:

Reserve grand bull: WORR Owen Tankeray Y79D ET, by Jarrett Worrell, Mason, Texas, Rylee Owen, Mason, Texas, and Miller Cattle Co., Douglas, Wyo.

Reserve grand female: TC C Lexi 88Y, by Whitney, Mason and Catelyn Walker, Prairie Grove, Ark.

Champion cow-calf pair: MSU Keepsake 21X ET, by Trent Neal, Bellevue, Mich.

Reserve champion cow-calf pair: TCC 934S Maui Time 0023, by Gary Allen Taylor III, Winchester, Ky.

Premier breeder and exhibitor: Purple Reign Cattle Co., Toulon, Ill.

Best 6 head: Sayre Herefords, Arenzville, Ill.,

First place get-of-sire: Perks Ranch, Rockford, Ill., with a group sired by TH 75J 243R Bailout 144U ET.

In the junior show on Sunday, Nov. 11, Sydney Wisnefski, Wyoming, Ill., exhibited the champion heifer Purple SM Wonder Woman 160Y by Purple MB Womanizer 14U ET. Korbin Collins, Flanagan, Ill., won reserve champion female honors with KPH Purple Cookie 116 by Purple Currency 24U ET.

Barber Ranch Hereford Sale Jordan Cattle Auction, San Saba November 14, 2012

Auctioneer: Eddie Sims; Dustin Layton

	Avg.
74 3/4 Hereford bulls	\$311,000 \$4,161
18 Females	\$54,600 \$3,033
26 Angus bulls	\$111,150 \$4,275
12 Charolais bulls	\$57,650 \$4,804

TOP SELLING HEREFORD BULLS PRICE

Lot 2 - BR Domino 0107; 8/10/10; Dudley Bros., Comanche	\$10,000
Lot 28 - BR RA Domino 1003; 2/20/11; Arch Andrews, Archer City	\$10,000
Lot 79 - BR Handy Man 1149; 10/3/11; Norman Grenwolge, Llano	\$8,100
Lot 8 - BR Texas Gold 0137; 9/24/10; Tom Quarles, North Zulch	\$7,500
Lot 64 - BR Shock & Awe 1091 ET; Kent Sheffields, Teague	\$7,500
Lot 33 - BR Copper 1012 ET; 3/6/11; Bonchasse Land & Cattle Co., Shreveport, LA	\$7,250
Lot 36 - BR Copper 1017 ET; 3/11/11; Bonchasse Land & Cattle Co.	\$6,250
Lot 35 - BR Copper 1016 ET; 3/7/11; Bonchasse Land & Cattle Co.	\$6,000
Lot 13 - BR Currency 0156; 10/7/10; Dustin Dean	\$6,000
Lot 10 - BR Felton 0150; 10/1/10; Burr Stafford	\$6,000

Largent and Sons Desert Mart "Best Heterosis Possible" Hereford Sale November 15, 2012

Kaycee, WY
Auctioneer: Joe Goggins, Billings, MT

	Avg.
60 Coming Two-Year-Old & Fall Yearling Hereford Bulls	\$4,788
15 - 2011 Hereford Bull Calves	\$2,850
49 Hereford Heifer Calves	\$1,907

TOP SELLING BULLS PRICE

Lot 34 - L3 Pistol Pete 117 ET; 3/15/11; 3/4 interest, full possession to Don Meyers, Hamilton, CO	\$12,000
Lot 8 - L3 Direct Vision 173, 6/1/11; Engle Ranch, Pearce, AZ	\$7,250
Lot 39 - L3 Diamond 202; 7/2/11; Ed Roeder, Yorktown	\$7,250
Lot 33 - L3 Premier Diamond 156; 5/2/11; Ed Roeder	\$7,000
Lot 20 - L3 Diamond 147; 4/23/11; Brad Stuart, Roby	\$6,750
Lot 37 - L3 Desert Frequency 200;	

7/2/11; 3/4 interest, full possession to 101 Ranch, Marfa \$6,750
Lot 1 - L3 Desert Frequency 140; 4/5/11; 3/4 interest, full possession to Highland Ranch, Hyattsville, WY \$6,500

TOP BULL CALF PRICE

Lot 65 - TP Oasis Jerry ET 229; 3/28/12; Ledbetter & Sons, Okmulgee, OK \$4,750

TOP SELLING HEIFER PRICE

Lot 83 - L3 Lady Athena 232 ET; 4/4/12; Karla Blom, Modesto, CA \$4,000

Oklahoma Hereford Association

December 1, 2012
Marietta, OK
Auctioneer: Eddie Sims; Matt Sims

	Avg.
47 bulls	\$124,950 \$2,659
5 Reg. females	\$12,200 \$2,440
40 com. Females	\$64,975 \$1,624

TOP SELLING BULLS PRICE

Lot 34 - MH 74-51 L18 T-Bone 1424; 3/1/11; from 74-51 Cattle Co., LLC, Fairmont, OK to Burdine Ranch, Eufulla, OK	\$4,500
Lot 17 - F&F Patron 134; 5/5/11; from Fuston Herefords, Turkey to Rick Arnold, Shamrock	\$4,000
Lot 3 - JLB Tucker 1142; 4/2/11; from Jason & Lori Brown, Junction City, KS to unknown buyer	\$3,700
Lot 24 - SL Rockin Benson 602Y; 3/19/11; from Littau Polled Herefords, Balko, OK to McMillan Ranch	\$3,500
Lot 21 - CL Red Man 1462; 10/30/10; from Kevin Paul Lane, Leonard to Myers Herefords, Siloam Springs, AR	\$3,100
Lot 23 - RL Rockin Redeem 590Y; 3/14/11; from Littau Polled Herefords to Tharp Ranch, Minder, LA	\$3,100
Lot 15 - F&F Patron 122; 4/2/11; from Fuston Herefords to Gail Ready, Prairie Hill	\$3,000

TOP SELLING FEMALES PRICE

Lot 64 - Montana Miss 993W; 2/3/09; from S-W Herefords, Bennington, OK to Ryan Bullinger, Henrietta	\$3,500
Lot 60 - MCS 802 Cinnamon 011Y; 9/1/11; from MCS Cattle Co., Elgin, OK to Myers Herefords	\$2,600
Lot 61 - MCS 802 Carrie 334Y; 9/19/11; from MCS Cattle Co. to Red Hills Herefords, Clinton, OK	\$2,400
Lot 59 - PF 50X Mandi Z209; 2/20/12; Pollard Farms, LLC, Waukomis, OK to Tharp Ranch	\$2,000



Offering a Select Group of
 18 Bulls • 11 Females • 2 Flushes
 5 Sets of Frozen Embryos
 Herd Bull Prospects • Show Prospects

Sunday, February 3, 2013

3PM • West Arena
 SOUTHWESTERN EXPOSITION AND LIVESTOCK SHOW
 FT WORTH, TEXAS

The SOURCE for the TOP GENETICS in the Hereford Industry! *pictured are just a few of the select offering*



MCS 802 LEGEND 85Z
 Sire: MCS 533P Ozzman 802 ET [DLF,HYF,IEF]

EPDs	BW	WW	YW	Milk	M&G
	+4.6	+54	+93	+20	+47

Consignor: MCS POLLED HEREFORDS



MCC MANNEAX 12
 Sire: AY Advance 9810

EPDs	BW	WW	YW	Milk	M&G
	+4.7	+41	+69	+18	+38

Consignor: MANN CATTLE CO.



GCC FULL SERVICE ET
 Sire: UPS TCC Nitro 1ET [CHB,DLF,HYF,IEF]

EPDs	BW	WW	YW	Milk	M&G
	+4.4	+55	+97	+16	+44

Consignor: GRUBBS CATTLE CO.



CHURCHILL ILR CHISHOLM 1246YET
 Sire: CL 1 Domino 955W [DLF,HYF,IEF]

EPDs	BW	WW	YW	Milk	M&G
	+1.7	+53	+89	+27	+54

Consignor: IRON LAKE RANCH



JC YCC AMERICAN SENTRY 1156
 Sire: YCC American 903 1ET

EPDs	BW	WW	YW	Milk	M&G
	+1.7	+43	+71	+26	+47

Consignor: JC CATTLE CO. / YOUNG



BR CURRENCY Y108 ET [DLF,HYF,IEF]
 Sire: BR Currency 8144 ET [DLF,HYF,IEF]

EPDs	BW	WW	YW	Milk	M&G
	+3.8	+60	+88	+24	+53

Consignor: BARBER RANCH



BF PERFECT POISON 174Y
 Sire: BF Domino Affect 702T ET

EPDs	BW	WW	YW	Milk	M&G
	+3.9	+57	+85	+27	+56

Consignor: BRUMLEY FARMS



W4 955 DOMINO 138Y 3ET
 Sire: CL 1 Domino 955W [DLF,HYF,IEF]

EPDs	BW	WW	YW	Milk	M&G
	+3.1	+51	+85	+25	+50

Consignor: W4 RANCH



NH CADDO Y305
 Sire: HH Advance 8203U ET [CHB,DLF,IEF]

EPDs	BW	WW	YW	Milk	M&G
	+6.4	+54	+76	+17	+44

Consignor: NOLAN HEREFORDS



DHD TURBO HH 1103 [DLF,HYF,IEF]
 Sire: Churchill Holland 987W ET [DLF,HYF,IEF]

EPDs	BW	WW	YW	Milk	M&G
	+4.9	+63	+100	+25	+56

Consignor: DOUBLE HEART DIAMOND CATTLE



C&M NEW MEXICO LADY 2060
 Sire: H5 Solution 064 [DLF,HYF,IEF]

EPDs	BW	WW	YW	Milk	M&G
	+4.3	+61	+97	+30	+61

Consignor: C&M HEREFORDS



BEACON HILL MAID MARIAN 1209
 Sire: KJ 2403 Recruit 966R [DLF,HYF,IEF]

EPDs	BW	WW	YW	Milk	M&G
	+3.4	+44	+60	+27	+49

Consignor: BEACON HILL RANCH



MM MIA 1200 ET
 Sire: CL 1 Domino 955W [DLF,HYF,IEF]

EPDs	BW	WW	YW	Milk	M&G
	+3.6	+57	+94	+26	+55

Consignor: MIMMS HEREFORDS



ILR 144U ATHENA M73 035Z ET
 Sire: TH 75J 243R Bailout 144U ET [DLF,HYF,IEF]

EPDs	BW	WW	YW	Milk	M&G
	+3.6	+53	+94	+20	+46

Consignor: IRON LAKE RANCH



SFCC DC OSU MIRANDA 2303
 Sire: HH Advance 3196N [CHB,SOD,DLF,IEC]

EPDs	BW	WW	YW	Milk	M&G
	+4.4	+62	+97	+24	+55

Consignor: SIMS FAMILY CATTLE CO.



TFR BROOKE 1204
 Sire: Star TCF Lock-N-Load 300W ET [DLF,HYF,IEF]

EPDs	BW	WW	YW	Milk	M&G
	+3.6	+47	+80	+24	+47

Consignor: TURKEY FEATHER RANCH

CONSIGNORS

ATLAS FARMS
 BARBER RANCH
 BEACON HILL RANCH
 BRUMLEY FARMS
 C&M HEREFORDS
 DOUBLE HEART DIAMOND CATTLE
 GRUBBS CATTLE CO.
 HOFFMAN HEREFORDS
 IRON LAKE RANCH
 JAB CATTLE
 JC CATTLE CO.
 LORENZEN FARMS - PRAIRIE
 MEADOW HEREFORDS

MCS POLLED HEREFORDS
 MANN CATTLE CO.
 MARIPOSA CATTLE CO.
 MIMMS HEREFORDS
 NOLAN HEREFORDS
 RAFTER J CATTLE CO.
 RON SCHLEGEL
 S-W HEREFORDS
 SIMS FAMILY CATTLE CO.
 TURKEY FEATHER RANCH
 W4 RANCH
 VANDERWORK HEREFORDS
 CURTIS YOUNTS & SON

350 HEAD!

Only the best horned and polled Hereford bulls and females are selling. Watch for catalog on the THA website: www.texasheford.org • Broadcast live on Superior Productions

Also plan to attend the **COMMERCIAL HEREFORD HEIFER SALE • 1:00 p.m. • West Arena**

Texas Polled Hereford Association
 P.O. Box 1867 • Port Lavaca, Texas 77979
 361/571-TPHA (8742)
 email: manager@tpha.net

Texas Hereford Association
 4609 Airport Freeway • Fort Worth, TX 76117
 817/831-3161 • 817/831-3162 (fax)
 email: texasheford@sbcglobal.net

2013 A.I. SIRE DIRECTORY



H5 Solution 064 [DLF,HYF,IEF] • 43087867 • 02/05/10

EPDs	CED	BW	WW	YW	Milk	M&G	CEM	MCW	SC	Fat	REA	IMF	BMI	CEZ	BII	CHB
	+4.3	+2.6	+63	+98	+29	+61	+4.7	+117	+0.8	+0.012	+0.30	+0.39	\$21	\$18	\$15	\$37

Sire: Churchill Yankee ET [CHB,DLF,HYF,IEF] • **Dam:** H5 Ms 9213 Domet 410 [DLF,HYF,IEF]
Semen: \$35 per straw - \$75 certificates

C&M HEREFORDS

Michael & Connie Perez • 575/633-2038 • Michael's cell: 575/403-7970
Kyle's cell: 575/403-7971 • Drew's cell: 575/403-7115
 Nara Visa, NM

Co-owners: S-W Herefords, Bennington, OK; Harrell Hereford Ranch, Baker City, OR



F Pioneer 926 [DLF,HYF,IEF] • 42977930 • 01/10/09

*One of the top 10 bulls in the breed for 2009 EPDs.
 His dam produced herd bulls for The Berry's and GKB Cattle.*

EPDs	CED	BW	WW	YW	Milk	M&G	CEM	MCW	SC	Fat	REA	IMF	BMI	CEZ	BII	CHB
	+4.3	+3.7	+62	+108	+36	+67	+3.4	+114	+1.8	-0.005	+0.47	+0.25	\$27	\$20	\$22	\$36

Sire: K 64H Ribstone Lad 157K [CHB,DLF,HYF,IEF] • **Dam:** F 9126 Dominette 417 [DOD]
Semen: 1-9 straws \$25 • 10 or more straws \$20 • \$50 certificates

DOYLE HEREFORD RANCH

Mike Doyle

P O Box 73 • Wolfe City, TX 75496 • e-mail: mdoyle0326@yahoo.com
 cell: 214/240-4538 • Website: <http://www.bullshop.com/tx/doyleherefordsranch.php>



ECR L18 Extra Deep 9279 "Bob" [DLF,HYF,IEF] • 43024518 • 04/14/09

EPDs	CED	BW	WW	YW	Milk	M&G	CEM	MCW	SC	Fat	REA	IMF	BMI	CEZ	BII	CHB
	+0.8	+2.1	+49	+71	+27	+51	+2.2	+49	+0.8	-0.006	+0.41	-0.04	\$16	\$15	\$14	\$21

Sire: GO Excel L18 • **Dam:** OXH Christi 0028
Semen: \$50 per straw, 10 straw minimum • Non-certificate AI Sire
Co-Owners: Fawcett's Elm Creek Ranch, Ree Heights, SD
For semen orders, contact: 605-943-5664



GKB EJE B627 Full Tank B927 ET • 43012983 • 01/04/06

EPDs	CED	BW	WW	YW	Milk	M&G	CEM	MCW	SC	Fat	REA	IMF	BMI	CEZ	BII	CHB
	+0.6	+4.4	+49	+85	+18	+43	+2.2	+99	+0.8	-0.016	+0.60	-0.06	\$17	\$15	\$15	\$23

Sire: GKB Downtown B627 ET [DLF,IEF] • **Dam:** GKB 146 Breeze B533
Semen: \$50 per straw, 5 minimum • \$50 certificates
Co-Owners: The Rosson Family, Milford and Mallorie Phelps, Grandview

GKB CATTLE CO.

Gary & Kathy Buchholz

P. O. Box 2807 • Waxahachie, TX 75168
 Gary's Cell: 214/537-1285 • Kathy's Cell: 214/537-1306
 e-mail: gary@gkbcattle.com or kathy@gkbcattle.com
 Website: gkbcattle.com

Boldface EPD=Trait Leader



Churchill Red Bull 200Z • P43281860 • 01/01/12

Red Bull offers the complete package that the Hereford breed is seeking. He offers an outstanding number package that includes a giant spread from BW to YW, and puts him in the top 5% of the breed for CE, BW, WW, YW, BMIS and CHB\$. He combines this data with a powerful look - deep bodied and huge ribbed, with plenty of length and volume. He is a very well balanced bull with muscle, a stout square hip and a smooth front end. He has full pigment and lots of red. His look is backed up by his mother who is a full sister to 008X the Champion Heifer of the National Jr. Hereford Show in 2011. Look for Red Bull at the National Western Stock Show and Fort Worth Stock Show.

EPDs	CED	BW	WW	YW	Milk	M&G	CEM	MCW	SC	Fat	REA	IMF	BMI	CEZ	BII	CHB
	+5.6	-0.2	+63	+97	+22	+53	+4.0	+84	+1.0	+0.021	+0.80	+0.18	\$24	\$20	\$18	\$34

Sire: Churchill Sensation 028X • **Dam:** Churchill Lady 002X ET

Semen: \$25 per straw • \$75 per certificate

Sexed semen available January 2013

CRR 719 Catapult 109 [DLF,HYF,IEF] • P43186342 • 02/16/11

Catapult offers the perfect blend of phenotype performance and genetic integrity. He is a sound footed, massively constructed, big bodied bull with great eye set and pigmentation. Eight generations of CRR bred females back him up. Udder quality, fleshing ability, maternal strength and fertility are stacked! Commercial bull buyers and cowmen alike will admire his muscle mass, structure and built-in calving ease. Catapult will be on display at the Fort Worth Stock Show.



EPDs	CED	BW	WW	YW	Milk	M&G	CEM	MCW	SC	Fat	REA	IMF	BMI	CEZ	BII	CHB
	+6.1	+1.6	+75	+106	+20	+57	+0.2	+116	+0.9	+0.012	+0.61	-0.04	\$20	\$18	\$14	\$34

Sire: TH 122 71I Victor 719T • **Dam:** CRR 4037 Eclipse 808

Semen: \$50 per straw, 10 straw minimum • certificates \$70

Sexed semen available January 2013



IRON LAKE RANCH

For Semen Package, Contact

Dimitri Mataragas 214/649-0071 or Rob Schacher 817/219-0102

P. O. Box 751 • Athens, TX 75751 • e-mail: robschacher@gmail.com • robenaroyalty@gmail.com

RSS Channing Gold 0901 ET [DLF,HYF,IEF] • 42980212 • 01/08/09



EPDs	CED	BW	WW	YW	Milk	M&G	CEM	MCW	SC	Fat	REA	IMF	BMI	CEZ	BII	CHB
	-0.4	+4.3	+43	+71	+15	+37	+1.3	+69	+0.5	-0.005	+0.42	0.00	\$15	\$14	\$14	\$20

Sire: BR DM Channing ET [CHB,DLF,IEF] • **Dam:** RSS Miss GE Gold 0421

Semen: \$25 per straw • \$75 certificates

Co-Owner: Diamond S Cattle Co., Fort Worth

R. SCHLEGEL & SONS

Rt. 2 • Olney, TX 76374 • 940/256-8490 • e-mail: rsshfrd@brazosnet.com

C 212 Domino 4011 ET [CHB,DLF,HYF,IEF] • 42473400 • 01/03/04



EPDs	CED	BW	WW	YW	Milk	M&G	CEM	MCW	SC	Fat	REA	IMF	BMI	CEZ	BII	CHB
	+6.9	+1.7	+49	+88	+36	+60	+0.7	+107	+1.3	-0.061	+0.78	+0.26	\$25	\$21	\$21	\$35

Sire: CL 1 Domino 212M [CHB,SOD,DLF,IEF] • **Dam:** C MS Pure Gold 2003

Semen: \$35 per straw, minimum of 10 • \$65 certificates

Co-Owners: Churchill Cattle Co., Manhattan, MT; Colyer Herefords, Bruneau, ID

W4 4011 Domino T154 [DLF,HYF,IEF] • 42841307 • 03/26/07



EPDs	CED	BW	WW	YW	Milk	M&G	CEM	MCW	SC	Fat	REA	IMF	BMI	CEZ	BII	CHB
	+2.0	+3.5	+61	+97	+25	+56	-1.1	+75	+1.0	-0.023	+1.07	+0.20	\$22	\$15	\$18	\$37

Sire: C 212 Domino 4011 ET [CHB,SOD,DLF,IEF] • **Dam:** RCR Aurum Pat Domet E 04092 [DLF,HYF,IEF]

Semen: \$35 per straw, minimum of 10 • \$65 certificates

W4 RANCH

P.O. Box 9 • Morgan, TX 76671-0009

Office: 254/635-4444 • Cell: 254/396-2584

E-mail: info@w4ranch.com • Website: www.w4ranch.com

C-S Gran Torino 8172 ET [DLF,HYF,IEF] • 42890091 • 03/01/08



EPDs	CED	BW	WW	YW	Milk	M&G	CEM	MCW	SC	Fat	REA	IMF	BMI	CEZ	BII	CHB
	-0.4	+0.8	+54	+79	+22	+49	+1.8	+78	+0.9	+0.59	+0.59	-0.08	\$16	\$14	\$14	\$19

Sire: DM BR L1 Domino 146 [CHB,DLF,IEF] • **Dam:** C She's Got Game ET

Semen: \$50 per straw • \$75 certificates

WILLIAMS FAMILY HEREFORDS

Herbert F. Williams

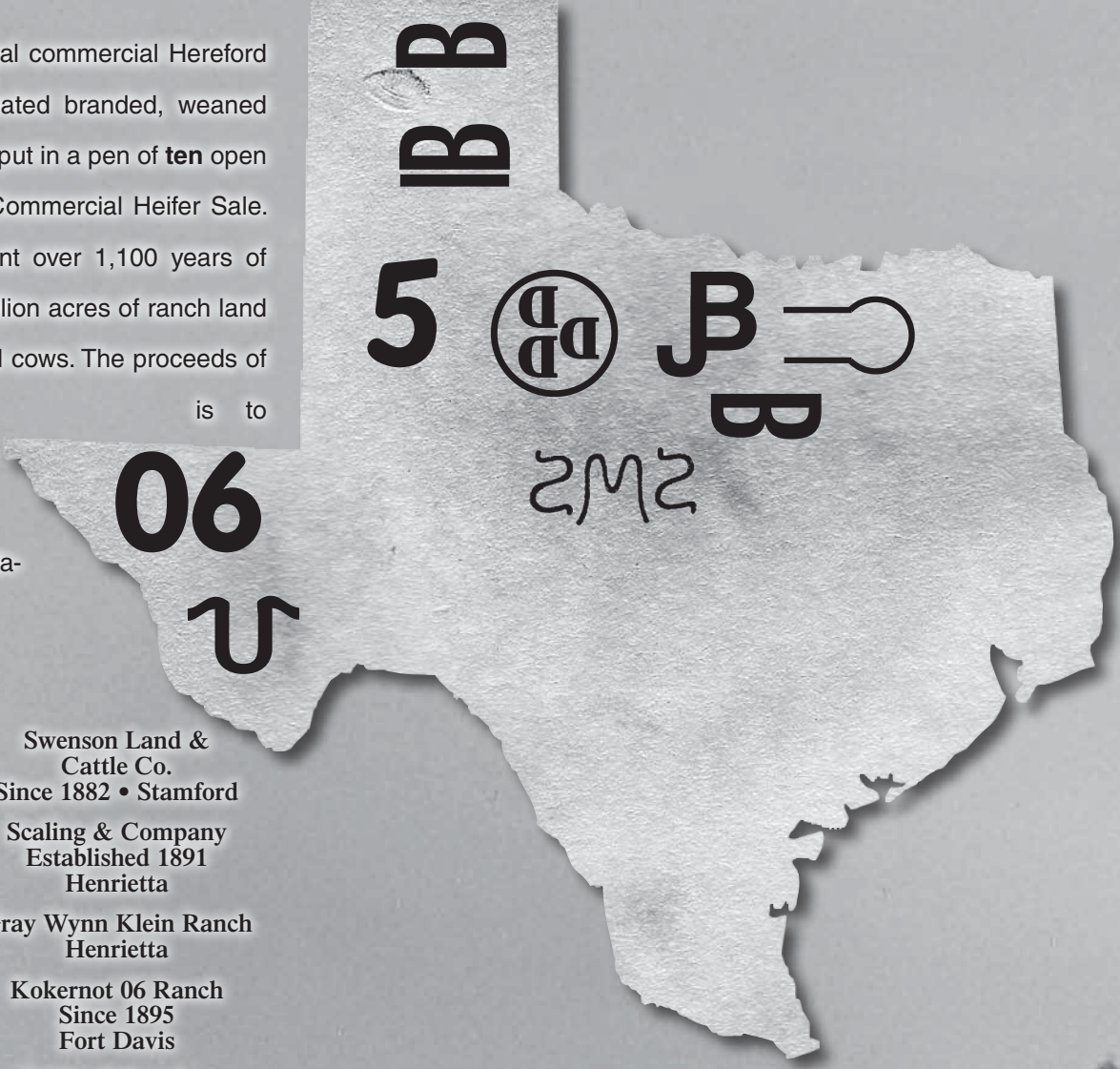
P. O. BOX 567 • Decatur, TX 76234 • Cell: 940/393-1650 • Ranch: 940/466-3381

E-mail: herbsusan@msn.com • Website: www.williamsfamilyherefords.com

Co-Owner: Colyer Herefords, Bruneau, ID

Boldface EPD=Trait Leader

Ten of our most loyal commercial Hereford ranches have donated branded, weaned heifer calves to be put in a pen of **ten** open heifers to sell at the 2013 Commercial Heifer Sale. These ten ranches represent over 1,100 years of Hereford heritage, over 2 million acres of ranch land and nearly 100,000 Hereford cows. The proceeds of the sale of these heifers is to boost the general operating and promotion account of the Texas Hereford Association.



Bud Brainard Estate
Since 1882
Canadian

Swenson Land & Cattle Co.
Since 1882 • Stamford

Ed Brainard Estate
Since 1927
Canadian

Scaling & Company
Established 1891
Henrietta

Scharbauer Ranch LLC
Since 1880
Midland & Amarillo

Gray Wynn Klein Ranch
Henrietta

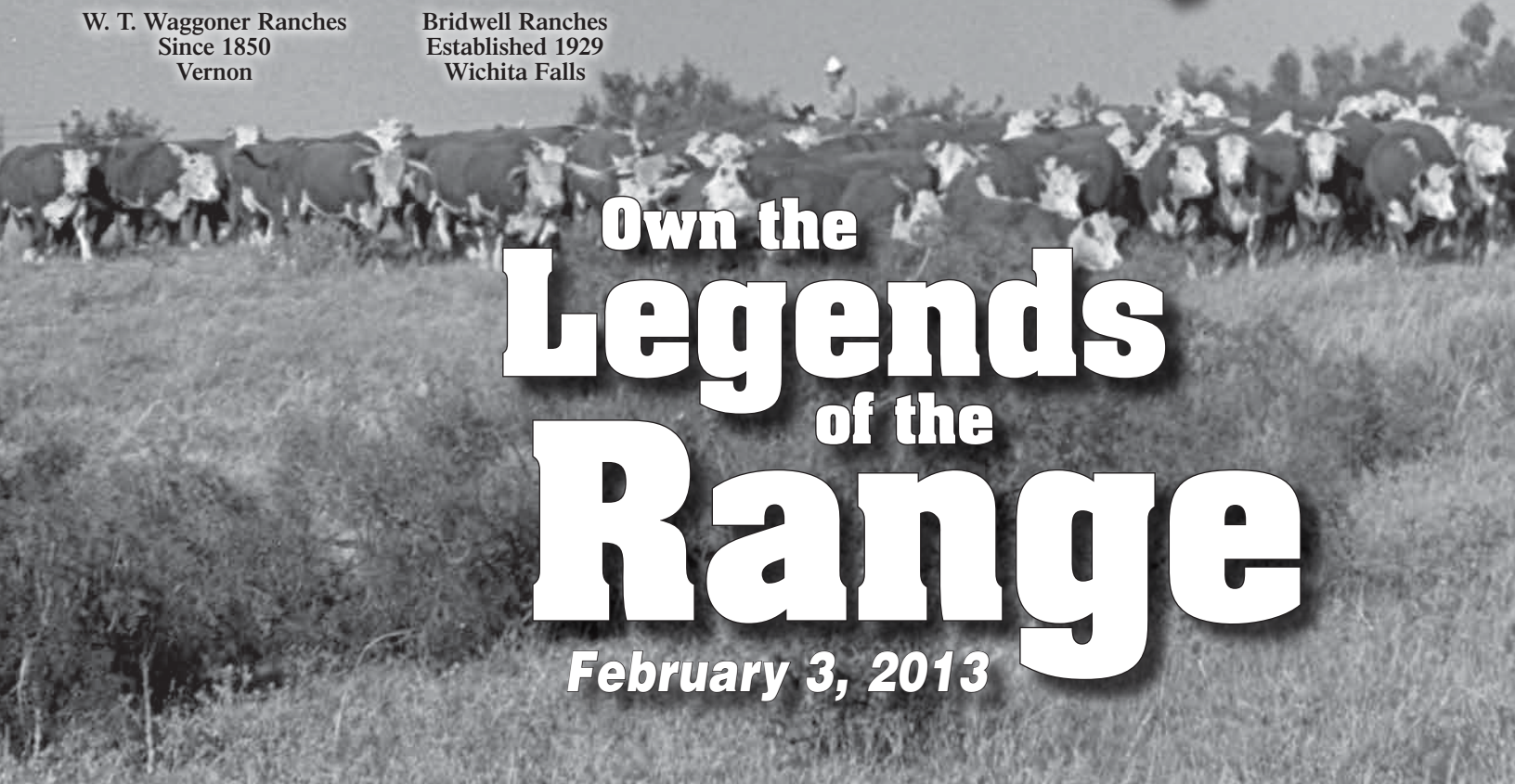
McKnight Ranch Co.
Fort Davis

Kokernot 06 Ranch
Since 1895
Fort Davis

W. T. Waggoner Ranches
Since 1850
Vernon

Bridwell Ranches
Established 1929
Wichita Falls

Own the
Legends
of the
Range
February 3, 2013



44th Annual Premium Whiteface Replacement Female Show & Sale

Sunday, February 3, 2013

1:00 PM • West Sale Arena

Fort Worth Stock Show Grounds

250 Herefords • 100 Baldies

**Hereford Weekend
at Fort Worth
Stock Show
Feb. 2-4, 2013**

Our 44th annual sale should be the best of all. Our consignors have saved only their best through one of the harshest years on record to offer some of the best Hereford Genetics offered in the State of Texas. Make "Super Hereford Weekend" an educational and fun event by attending the THA Annual Membership Meeting and Social, Commercial Sale, Cowtown Select Sale and National Hereford Show.

CONSIGNORS

Bar J Bar, El Paso
Brainard Cattle Co., Pampa
Brandon Farms, Newkirk, OK
Dangelmayr Bros., Muenster
Justin Dauer, Panhandle
Edgar Hereford Ranch, Blanket
Fuston Herefords, Turkey
H Ranch, Channing
Newly Hutchison, Canton, OK

Jackson Hereford Ranch, Ranger
Ronnie & Jeanne Johnson, Happy
MW Herefords, Brownwood
Milligan Herefords, Kings, IL
Rockin' W Polled Herefords, Schulenburg
Summerour Ranch, Dalhart
W4 Ranch, Morgan
Curtis Younts & Son, Belton

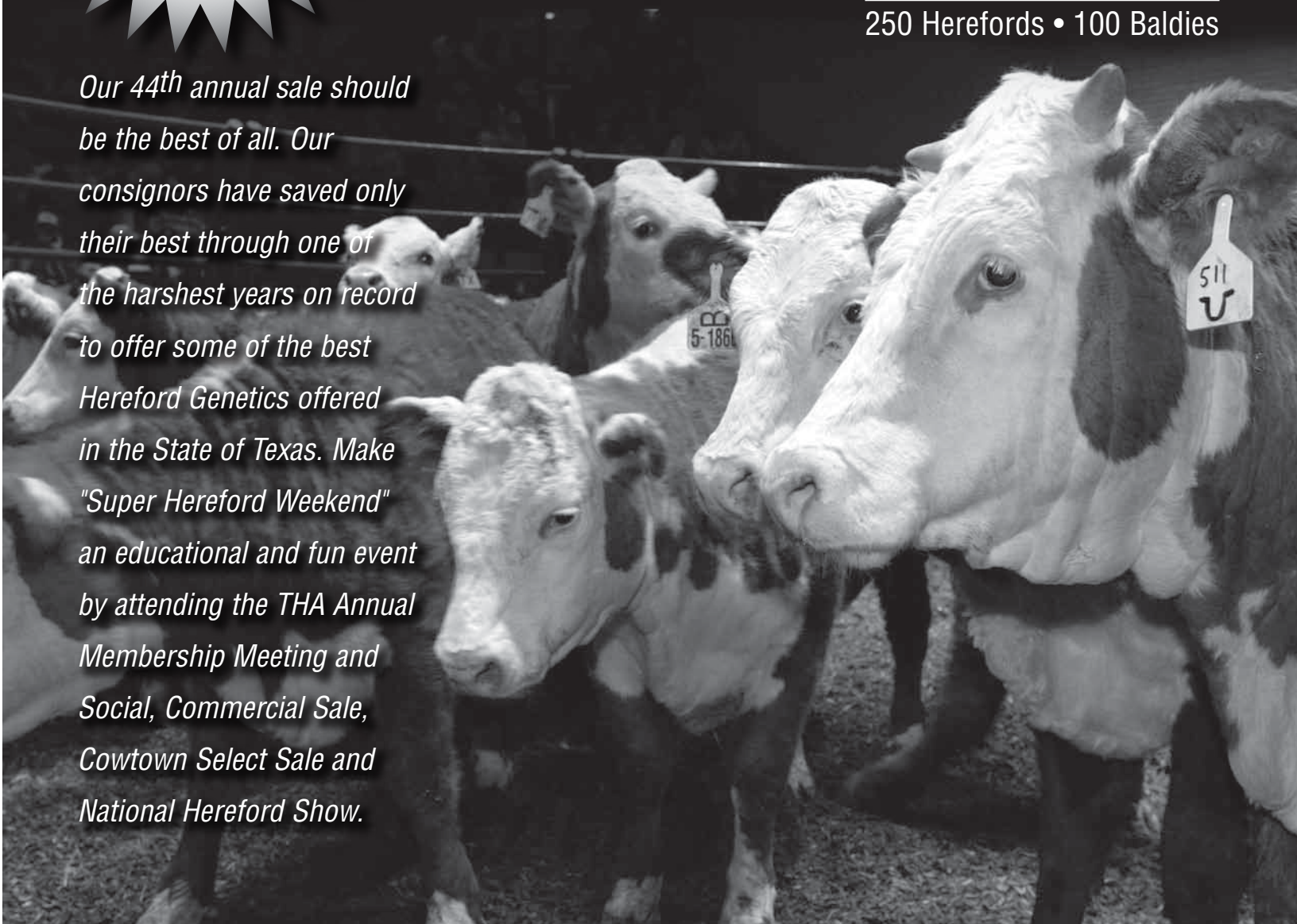
SPONSORED BY

The Texas Hereford Association

4609 Airport Freeway
Fort Worth, Texas 76117
Jack Chastain, Manager

817-831-3161
texashereford@sbcglobal.net

**DON'T MISS THE COWTOWN
SELECT SALE AT 3:00 PM**





For the first time ever, THA offers a custom piece of jewelry.

THA Medallion Order Form

NAME: _____

HOME MAILING ADDRESS: _____

CITY: _____

STATE: _____ ZIP + 4: _____

PHONE: _____ MOBILE: _____

EMAIL: _____

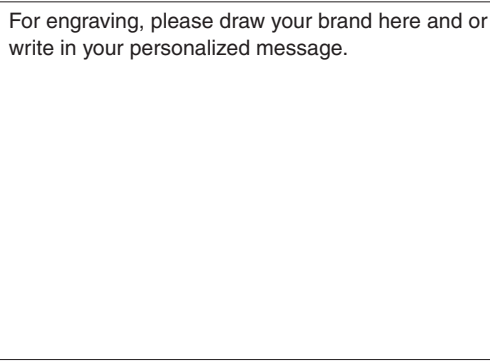
QTY	STERLING SILVER	24k VERMEIL	JUMP RING FOR BRACELET	BAIL FOR NECKLACE	UPGRADE - DESCRIBE	FINISH ANTIQUE OR BRUSH	GIFT WRAP	ITEM PRICE	TOTAL

Base Price: \$250.00 - Sterling Silver

Upgrades include:

- 1 brown diamond for eye: \$40
- Bail w/3 brown diamonds: \$148.00
- 4 brown diamonds in bezel: \$160.00
- Diamond bezel (60 diamonds): \$2,450.00
- 24k vermeil plate: \$100.00
- Gold available. price upon request.
- Engraving:
 - your brand on front: \$75
 - personalized message on back: \$25
- 20" sterling silver chain, price upon request
- 7" link bracelet, price upon request
- Gift Wrap, price upon request

For engraving, please draw your brand here and or write in your personalized message.



REGULAR SHIPPING AND HANDLING	\$
OVERNIGHT SHIPPING	\$
SUBTOTAL	\$
ADD STATE SALES TAX 8.25%	\$
TOTAL AMOUNT ENCLOSED	\$

Make check payable to:

Texas Hereford Association

fax order form to: 817-831-3162 or scan and e-mail to: texashereford@sbcglobal.net or mail to: 4609 Airport Freeway, Ft. Worth, TX 76117. Call 817-831-3161 for details.

We cover the entire state.

Representing buyers and sellers of farms, cattle & horse ranches.

We are one of the top marketers of farm and ranch land, with over 20 years of experience. Our well regarded reputation in the market and our extensive contacts benefit you in many ways.

Our vast experience in selling working cattle and horse ranches as well as hunting and recreational properties and producing farms has made us a market leader.

Our agents know and offer you access to the best appraisers, farm and ranch lenders and surveyors.

We create attractive, detailed brochures which are distributed to brokers and prospective buyers.

We continually formulate innovative methods and techniques to maximize exposure of our property. Since 1983 we have invested over \$1,250,000 in media placement.

Everyone in our organization takes pride in our professional service. We provide you with prompt responses to your questions and guard your confidentiality.

When you decide to sell, call us. You'll be glad you did!



"Country Living" acreage with homes, stables or other improvements.

Unmatched Performance Since 1983

DONLIE McMULLIN REALTY

Phone: 254-547-0172 • Fax 254-542-1489

Toll Free: 1-800-200-8966

202 S. 1st Street • P.O. Box 794

Copperas Cove, TX 76522

e-mail: donliemcmullin@earthlink.net

*Honor the special people
in your life and...
our Hereford Heritage*

The Texas Hereford Auxiliary is now taking orders for bootjacks crafted by **Crawford & Company of Uvalde, Texas.**

The beautiful cast iron bootjacks feature a Hereford head on the leather footplate. A brand or up to 3 initials may be engraved on the leather to further personalize your bootjack.

These bootjacks are ideal for friends and family members. Remember this Hereford gift idea for birthdays, anniversaries, graduation and other occasions. Proceeds will benefit Texas Hereford Auxiliary programs.



Bootjack Order Form

NAME: _____

PHONE NUMBER: _____

E-MAIL: _____

MAILING ADDRESS:

STREET _____

P O BOX: _____

CITY: _____

STATE: _____ ZIP: _____

SHIPPING ADDRESS IF DIFFERENT FROM ABOVE:

STREET _____

P O BOX: _____

CITY: _____

STATE: _____ ZIP: _____

_____ Bootjack w/Hereford head only @ \$85 each \$ _____

_____ Bootjack w/Hereford head and
one line of personalization ** @ \$90 each \$ _____

*** include drawing of brand or initials on
separate sheet*

Shipping and handling \$20.00/per item \$ _____

Total due when order is placed \$ _____

Make check or money order payable to

Texas Hereford Auxiliary

and mail with the order form to:

Texas Hereford Auxiliary

c/o Susan Turner

P O Box 236 • Rochester, Texas 79544

Phone: 940-742-3347 • Fax: 940-742-3547

*Thank you for your support
of the Texas Hereford Auxiliary and our work
in promoting Herefords and Hereford youth.*

Having The Right Attitude

Now is the time to give this some serious thought. You have purchased or selected your FFA or 4H market or breeding project. You fed all the right feeds, groomed and exercised it countless hours, and now it is time to head to the shows.

Preparation and presentation of your investment will make or break your chance to show a champion. With all the time and effort that your family team has put into this project, it is so important that you stay focused on what is at stake.

In reality, there can only be one named "Grand Champion". Maybe your project doesn't stand a chance, but you still need to show and present it as though it will be the one the judge can't turn down for the top prize.

FFA and 4H can be an important tool to teach young people so many life lessons. For instance: how to win and lose with the right attitude, and how to work on a team where you are an important player. When in the show-ring, you probably never thought of the many other people you are representing. First of all is your family then the people or breeder you purchased your animal from, the parentage of your animal (bull, cow, boar, sow, billy, nannie, Buck, doe, etc.), more importantly yourself and school, but most important - GOD and Country.

Consider the impression you are making on people at ringside. They are watching all the time. It could have an effect on a possible job you may want in the future. Someone that may be watching could have it in mind to hire you one day. How well you work with others and the way you present yourself and your project will no doubt sway their decision either way.

A professional attitude has a much larger impact than you may think. Remember to personally thank the judge, the sponsor of the prize you win, and the people who purchase your project. If you lost, show strength of character and don't forget to also humble yourself and congratulate the person who won. You did not do this alone. One can never say thank you to much.

All these things will help the way others think of you, So at this year's shows, think about the impression you may be leaving on so many others and have the right attitude.

Have fun and good luck to you all! ★

Texas Hereford AUXILIARY Dues

NAME: _____

ADDRESS: _____

CITY: _____ STATE _____ ZIP _____

PHONE: _____ CELL: _____ FAX _____

E-MAIL: _____

Please update contact information.

Make check payable to: Texas Hereford Auxiliary

Texas Auxiliary Dues: \$20.00

National Hereford Women Dues \$20.00

Total Amount Due: \$40.00

Please return to:

c/o Texas Hereford Association
4609 Airport Freeway
Fort Worth, TX 76117

Amount enclosed: \$ _____

Application for Membership

TEXAS HEREFORD ASSOCIATION



Advantages of THA Membership

SERVICE – The Texas Hereford Association is a service organization to benefit the Hereford breed and the breeder.

Members are assisted in buying and selling cattle at private treaty and by auction.

The Texas Hereford Association sponsors the Commercial Hereford Heifer Show and Sale and the Texas Select Sale. These sales promote the use of better Hereford bulls and females. The Texas Hereford Association is also actively engaged in the promotion of Texas Herefords and in sponsoring seminars, field days, and other events to encourage educational opportunities for members.

ASSOCIATION – The Texas Hereford Association was organized in 1899. Its membership has included the elite of the Texas Hereford industry since its inception. First year membership dues are \$95.00. Dues for active membership after the first year are \$95.00 plus a \$1.00 per head assessment on calves registered the previous year, less those steered, etc. Associate memberships are available for \$75.00 per year. Each member receives an attractive membership certificate.

DIRECTORY ISSUE – Every active member of the Texas Hereford Association has a free listing in the Directory issue of *The Texas Hereford*. This Directory is used by thousands of Hereford breeders the year round. Information pertaining to your herd such as herd sires, bloodlines, location of farm or ranch, telephone numbers, etc., will be listed in this widely used reference book. This herd listing alone is worth the price of membership. Associate members are also listed.

THE TEXAS HEREFORD – Monthly publication of the Texas Hereford Association. It is the only publication in Texas devoted solely to Herefords. It includes news about the association, news about Herefords, and timely editorial features. Active members can list Herefords for sale **FREE** in the Herefords For Sale column. This service has been responsible for selling thousands of Texas Herefords all over the nation. Texas Hereford Association members may advertise in *The Texas Hereford* at low livestock rates – a considerable savings for your marketing program. Sale catalogs, brochures, flyers, and other marketing aids designed and produced by our professional staff at considerable savings. (Advertising rates will be sent on request.)

***The Most Important Investment
You Can Make As A Registered
Hereford Breeder is a
Membership in the
Texas Hereford Association.***

ACTIVE Membership Application

I hereby make application for membership in THE TEXAS HEREFORD ASSOCIATION.

Upon becoming a member, I will abide by the constitution and By-Laws of the Association and also the rules of the American Hereford Association.

I am the owner of head of registered Herefords and head of commercial cattle.

Attached hereto is remittance of Ninety-five Dollars (\$95.00 covering membership fee and dues for the first year). Dues for active membership after the first year are \$95.00 plus \$1.00 per head assessment on calves registered the previous year (Less those steered, etc.). Dues include a subscription to the magazine.

Signed _____

Ranch Name _____

Address _____

City _____ State _____ Zip _____

Phone _____ Date _____

Spouse's First Name _____

ASSOCIATE Membership Application

Firm _____

Address _____

City _____ State _____ Zip _____

Phone _____ Date _____

Attached hereto is remittance of Seventy-Five Dollars (\$75.00) covering associate membership fee for one year in the Texas Hereford Association. (Includes magazine)

Signed _____

Voluntary Contribution to THA Foundation (Tax-deductible)

SUBSCRIPTION FORM – \$15.00 per year includes directory issue

Name _____

Address _____

City _____ State _____ Zip _____

TEXAS HEREFORD ASSOCIATION

4609 Airport Freeway
Fort Worth, Texas 76117
Phone 817/831-3161
Fax 817/831-3162

E-Mail: texashereford@sbcglobal.net
www.texashereford.org



You are invited ...

We invite all Texas Hereford members, auxiliary and juniors and all other Hereford enthusiasts to attend the annual meeting of THA.

The Annual Meeting will be at the Botanic Garden Center, 3220 Botanic Garden Blvd., Fort Worth, in the lecture hall at 4:00 p.m. with a social to follow in Oak Hall from 5:00-7:00 p.m.

The Botanic Garden Center is located approximately 1½ miles west of downtown Fort Worth at the intersection of Interstate 30 and University Drive. Take the University exit and turn north. The Garden has two entrances on your left. The Garden Center is located at the second entrance.

Date: . . . February 2, 2013

Time: . . . 4:00 p.m.

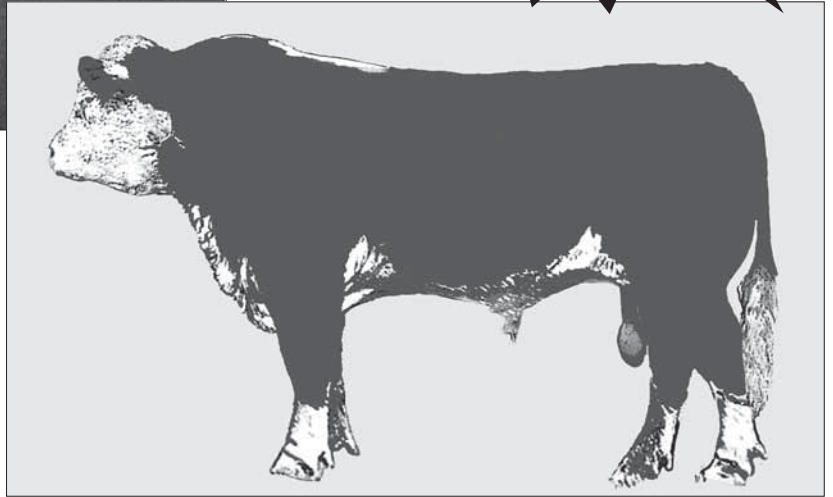
Make plans to attend ~

- Silent auction*
- Reception to honor Show Honorees Jackson Hereford Ranch.*





**INTRODUCING
OUR NEW
POLLED SIGN –
NOW
AVAILABLE**



Hereford Spoken Here

**That's exactly the
message that this
sizable sign projects!**

Constructed of sturdy 16 gauge steel and finished with a baked porcelain enamel, it will stand up to all weather conditions! Three colors – green, white and maroon – make each one a rich display of the Hereford breed.

**The sign is available in two sizes:
30" tall x 38" wide or
38" tall x 60" wide**

Name panels 10" tall are available for one -two lines and 14" tall for three lines.

**Please send completed form and check to:
Texas Hereford Association
4609 Airport Freeway
Fort Worth, Texas 76117**

Yes! **Send me:**
 Horned Polled

- 30"x38" sign with 10"x38" name panel @ \$425.00*
- 30"x38" sign with 14"x38" name panel @ \$450.00*
- 38"x60" sign with 10"x60" name panel @ \$725.00*
- 38"x60" sign with 14"x60" name panel @ \$750.00*

All prices FOB Dallas, TX
*TEXAS RESIDENTS must add 8-1/4% sales tax. Special art work for brands or special type billed at cost.

PLEASE PRINT LETTERING FOR NAME PLATE:

1st line _____

2nd line _____

3rd line _____

Ship by motor freight to:
(must be physical address – no P.O. Boxes)

Phone # for questions

EAST

H² RANCH AND CATTLE CO.
 KEVIN W. HARTLEY
 h2ranch@rodzoo.com
 7787 ROCKY RIDGE LN • MADISONVILLE, TX 77864
 OFFICE: 936-349-0439 MOBILE: 936-661-0306

Noack Herefords
 "Quality Registered Herefords"
7- BULLS FOR SALE 7-
 Office: 512/446-6200 • Cell: 979/218-0065

The Doyle Difference
 "Genetics of today's leading performance families."
DOYLE HEREFORD RANCH
 P.O. Box 73 • Wolfe City, TX 75496
 mobile: 214/240-4538
 http://www.bullshop.com/tx/doyleherefordranch.php
 email: mdoyle0326@yahoo.com

Gibbs Ranches
 W. Paris Gibbs, Jr.
 Box 11 • Caldwell, TX 77836
 (979) 567-3740

Herrmann Cattle Co.
 Herefords Since 1938
 P.O. Box 366 • Caldwell, TX 77836 • 979/567-4204
Clay Herrmann Carl Herrmann
 Braford Div. • 979/567-9604 Hereford Div. • 979/567-9465

LEE TERRELL
 REAL ESTATE
 Residential • Farms • Ranches
 Commercial • Property Evaluations
 (903) 868-2505 • Res. (903) 893-2289
 cell (903) 815-1299
 2404 San Miguel • Sherman, TX 75092

Still River Ranch
 Larry Woodson • 214-491-7017
 Bonham, Texas
 ranch located 10 miles south of Bonham
 and 1 mile south of Gober

BAR OAK RANCH
 RANDALL BARNES & SONS
 HEREFORD BREEDERS
 TOLAR, TEXAS
 (817) 279-3543 Randall email us at:
 (817) 243-5867 Craig herefords@baroakranch.com

DDD DDD DDD
THREE D RANCH
 PAUL DAVIS
 RT. 1, BOX 242 M
 ROCKWALL, TEXAS 75087
 972/771-3396 (RANCH)
 972/771-5653 (OFC.)
 MIKE HAWKINS, MGR.
 972/348-7049 (CELL)

Raising cattle in Texas since 1855
SKRIVANEK RANCHES
 Joey & Susan Skrivanek, owners
 407 W. Mustang • Caldwell, TX 77836
 Joey res. (979) 567-3857 • cell (979) 224-4698 • office:
 (979) 567-3131 • ranch (979) 272-8133 • fax (979) 567-2373
 9 miles E. of Caldwell on Hwy 21, or 15 miles W. of Bryan-College Station on Hwy 2

Williams Family Herefords
 Herb and Susan Williams
 158 P.R. 2531
 Hwy 51 N. • Decatur, TX 76234
 Herb cell (940) 393-1650
 Home (940) 466-3381 • Ranch (940) 627-5325
 herbsusan@msn.com • www.williamsfamilyherefords.com

Jim G. Bell
 F • A • R • M • S
 "Selling Hereford Bulls Since 1952"
 Off: 936-867-5126 • Res: 936-867-5125
 3275 FM 1819 • Pollok, TX 75969

G3 Harry & Cheryl Grett
 512-303-5714
 P. O. Box 969
 Elgin, Texas 78621
 g3ranch@aol.com

Decker KJB
CATTLE SERVICES
 Custom Fittings
 Junior Show Prospects For Sale
 Hillsboro, Texas
 (254) 582-1952 (972) 938-1952

Sam Dominey • Whispering Pines
 3312B SH 19N
 Huntsville, TX 77340
 936.594.3986 (res)
 936.291.3009 (office)
BULLS FOR SALE

BAR S HEREFORDS
 Larry Schatte
 1091 P.R. 4481
 Giddings, TX 78942
 (979) 366-2451

Jackie Pullen Est. 1985
PULLEN HEREFORDS
 972-571-5906 CELL • 972-722-5081 RES
 460 Pullen Road • Rockwall, TX 75032

Sunny Hill Ranch
 Pete Johnson
 Registered Polled Herefords
 Hwy. 94 West • 5 Miles
 Office 805 Sayer Lufkin, TX 75904
 Office: (936) 632-1465
 Home: (936) 875-2398
 e-mail: pijmhj@yahoo.com

ATLAS FARMS
 Your Texas Meat & Milk Factory
 Claudia, Precious & Jimmy Atlas
 4920 CR 401 • Grandview, Texas 76050
 (817) 790-0202 • (817) 456-4691 (mobile)
 email: atlasfarms@sbcglobal.net

GKB Cattle
 Hereford Cattle
Gary & Kathy Buchholz
 P.O. Box 2807, Waxahachie, TX 75168
 Res: 972-937-0417 Cell: 214-537-1285
 Fax: 972-937-0418 Cell: 214-537-1306

Mathias
 Registered Herefords & Paint Horses
 Kurt • Brenda
 192 CR 4040 • Mt. Pleasant, TX 75455
 903-572-2396 • kmathias@txt.net

NOLAN HEREFORDS
 Scott, Alise, Ilissa, Bethany & Audrey
 1950 Skylark Rd. • Gilmer, TX 75645
 nolanherefords@aol.com
 www.nolanherefords.com
 Res.: 903-797-6131 • Cell: 903-738-5636

"Stressing Excellence In Polled Herefords"
Larsons' Polled Herefords
 Ken and Carolyn Larson, Owners
 972-223-6450 Office • 972-223-8955 Home
 254-435-6063 Ranch Office • 972-230-0629 Fax
Lee Larson, executive mgr • 972-824-5869 Cell
 2793 F.M. 1991 • Clifton, Texas 76634
 www.larsonspolledherefords.com • RunLRanch@aol.com

NELSON
 Land and Cattle Co.
 Corporate Office: 2415 Coll Rd. Suite C Plano, Texas 75075 972-596-4335 jnelson@preston.com
 Ranch Office: Ron Dugger HC 71 Box 1075 • 1273 Highway 99C Kingston, OK 73439 903-314-3704 rncm@preston.com


M RANCH
 Hereford & Charolais
 Kevin and Jessica Moore
 2929 Oak Hill Road
 Alvarado, TX 76009
 Kevin's Cell 817/822-7109
 817/790-2184 Fax
 E-mail: M6Ranch@att.net
 WebSite: www.M6Ranch.com

Metch POLLED Herefords
 Dams of Distinction Breeder
Don, Ann and Barbara Metch
 903-848-8614 • 903-848-7366
 Fax 903-848-9064 • Certified Herd #5526
 1259 V.Z. C.R. 2506 • Canton, TX 75103

McClatchy Eagle Hereford Ranch
 Registered Horned
 Joel & Dianne McClatchy • Cell: 214-850-5926
 206 Lakehill Dr. • Rockwall, TX 75087
 Ranch: 1000 HCR 1212 • Blum, TX 76627

CENTRAL / SOUTH

B "Registered Herefords Since 1938"
DUDLEY BROS. Box 10, Comanche, Texas 76442
 Office: 325/356-2284 • Fax: 325/356-3185
 John: 325/356-3767 • Tom R.: 325/356-3918
 E-Mail: dudleybros@comanchetx.com

One Star

Hereford Ranch
 1150 Estates Drive
 Abilene, TX 79602
 A.L. "Dusty" Rhodes
 Ranch: 940-867-0918
 Office: 325-673-3200
 Res.: 325-673-7592
 Fax: 325-673-2840
 lonestarhereford@yahoo.com

C/2
Cattle Co.
 Pearsall, TX
 "For Quality Hereford Cattle
 Bulls & Females
 Call
 Louie & Helen Carroll
 503 #, Trinity
 Pearsall, TX 78061
 830/334-2973

EDGAR HEREFORD RANCH

 Bobby & Agatha
 P.O. Box 68
 4525 Cty Rd 295
 Blanket, Texas 76432
 Cell: 325-642-2651
 email: abedgar@cctc.net

Mockingbird Hill
 Established in 1854
 Bulls, Females, Club Calves
 P.O. Box 516 • Mineral Wells, TX 76067
 817-244-2637 res. or 940-325-2033 ranch
 Ranch located 10 miles south of Mineral Wells on US281

Howard Herefords
 Quality Herefords Since 1950
 Bulls & Females For Sale
 Visitors Always Welcome
 DAVID HOWARD P.O. Box 1039
 830/988-2241 SABINAL, TX 78881


Hidden Oaks Ranch

 Keith, Cindy, Shelby, Koby,
 Harley & Brody Rogers
 171 CR 407
 Hamilton, TX 76531
 (254) 386-5699
 www.hiddenoaksranch.com
 e-mail: hereford@wildblue.net
 "Raising respectable kids and herefords"

MW HEREFORD RANCH
 P.O. Box 1754 • Brownwood, TX 76804
 325/646-0956 or 646-5501 (office)
 "Top Quality Herefords" "Home of Pathfinder"

ROCKIN' W POLLED HEREFORDS

 Maynard Warnken • 979-561-8846
 Kevin Warnken • 979-561-8108
 e-mail: rockinw@cvcx.com
 www.rockinwranch.net
 Fax 979-561-8867 • Drawer 29 • Schulenburg, TX 78956


Jackson Hereford Ranch

 6481 Stephens CR 105
 Ranger, Texas 76470
 Robert & Dena • (254) 647-3671
 Fax (254) 647-3622
 denajackson@agristar.net
 Ranch located 15 miles north of Ranger on FM 207

W. K. GORDON, JR.
RANCHING OPERATIONS
 1546 FM 203
 Walnut Springs, TX 76690
 (254) 797-5322

PERFORMANCE PROGRAM BREEDER
NEEL POLLED HEREFORDS
 George E. Neel, Jr.
 Box 450029 • Laredo, TX 78045
 (956) 723-6346 Office
 (956) 722-1904 Home

BULLS FOR SALE
LANG HEREFORD RANCH

 6416 CR 3420
 Lampasas, TX 76550
 512/556-6469 • cell: 512/556-7956
 wandalang48@yahoo.com

Circle M Ranch

 P.O. Box 405
 Meridian, TX 76665
 Jane S. Murphey
 Manager
 254/855-1276 (cell)
 254/435-2162 (res.)

Registered Herefords since 1956
Winsauer Herefords
 713/471-3994
 P.O. Box 39 • Beeville, TX 78104
 Ranch located 4 miles east of Beeville on Ellis Rd.
 Visitors Welcome

Lesley Herefords

 Roy Lesley 254/965-5123
 Kenneth 254/965-4603
 31681 U.S. Hwy. 67E
 Stephenville, TX 76401

Ross Wilson Herefords
 Ross Wilson • 254-965-6566
 2305 W. Lingleville Rd., Apt. 22
 Stephenville, TX 76401
 Joe D. Sherrod • 512-809-3470
 Ranch located 4 miles west of Gorman, TX

SPEARHEAD RANCH

 Paul and Sheila Funk • 254-289-7657
 525 County Road 51
 Copperas Cove, TX 76522-7004
 sheilabfunk@aol.com • www.spearheadranch.net

Sjolander Ranches
 George 254-379-8983
 Jan 254-412-8213
 Residence 254-896-2219
 1290 PR 504 • Riesel, Texas 76682


Flying 'S' Herefords
 Registered Line One Herefords • Paluxy, Texas

 Jim Strode 214-361-6900
 James Strode 214-533-9669
 Rick Wilson 817-219-2225
 James.strode@gmail.com

CY
Curtis Younts & Son
 Established in 1959
 Curtis Younts, Jr.
 3648 Elmer King Rd. • Belton, TX 76513
 254/939-6492 (residence) 254/760-0243 (cell)

Muleshoe Ranch

 J.T. Echols DVM
 P.O. Box 709 • Breckenridge, TX 76424
 Office: (254) 559-9739
 Mobile: (254) 559-0156
 muleshoeranch@gmail.com
 muleshoeherefordandangus.com

WESLEY THEURET
 Res./Ranch: 830-583-3365
 Cell: 210-315-0103
 2348 CR 165 • Kenedy, TX 78119-5101
 theuret@sbcglobal.net

ALPHA EQUINE BREEDING CENTER
 Hereford Bulls with Eye Pigment  Breeder of great Cutting Horses
 M.C. Baker, DVM
 Clint Baker, Mgr. • 817-279-8275
 www.alphaequine.com
 2301 Boyd Road • Granbury, TX 76049
 Fax 817-279-7621

RSS R. SCHLEGEL & SONS

 Route 2, Olney, TX 76374
 Registered Herefords Since 1974
 Bulls, Females, Club Calves
 email: rsshrfd@brazosnet.com
 Ranch (940) 873-4437 Home (940) 873-4621

COVERED M CATTLE CO.

 Joshua Martin • Cell 210-260-7273
 Residence: 830-393-4783
 475 CR 224 • Floresville, TX 78114
 e-mail: coveredmcattle@gmail.com
 www.coveredmcattleco.com

WEST

FUSTON HEREFORDS

Mike Fuston (806) 423-1303
Denny Fuston (806) 423-1118
Cell (940) 867-7336 • mike@fustonherefordranch.com

Honeymoon Herefords

"Breeding cattle for the 21st century."

Robert L. Mezger
614 Honeymoon Ranch Rd.
Marble Falls, TX 78654
830/598-2258

B-BAR-HEREFORDS

Brad, Glenna, Lyndi,
Hunter & Danci Stuart

876 SH 705
Roby, Texas 79543
Res. (325) 235-5402
Mob. (325) 338-5111



"Visitors Are Always Welcome"



DAVID CARVER
806-879-2166 Office
806-292-4444 Mobile

JIM BOB CARVER
806-488-2325 Night
806-679-2370 Day

AHA Golden Breeder Award • Est. 1929 LEE HEREFORD RANCH

Ira F. Lee
6467 Seawillow Rd. • Lockhart, TX 78644
512/398-3032
e-mail: iralee@hughes.net
Registered Herefords For Sale

Cole & Susan Turner 940-742-3347

Rt. 1, Box 254
Rochester, TX 79544

CASE RANCH

HEREFORDS

Box 1218 Eldorado, TX 76936

Ranch: 325/853-2368 FAX: 325/853-2681
Pete Case: 325/650-6209 http://www.caseranch.com
email: pete@caseranch.com
Ranch Rd. 915 - Between Eldorado and Mertzon

David Moore
325/576-3684 ofc.
325/576-2205 res.
e-mail: info@piedpiperfarms.com
website: www.piedpiperfarms.com



P.O. Box 309
HAMLIN, TEXAS 79520

Coates Ranch Co.

www.coatesranch.com

Box 645 • Mertzon, TX 76941
Steve Wayne: 325-835-2531
Stephen: 325-226-4184
Email: scoatesjr@yahoo.com



McINNIS CATTLE COMPANY

Est. 1896
e-mail: mcinnis@centex.net
www.mcinniscattle.com
14200 Highway 183 N. • May, TX 76857

Bill McInnis
325-646-3884 home
325-646-3234 fax
Ben McInnis
325-646-4134 home
325-647-4159 cell
Bill's cell:
325-642-8823

YOUNGBLOOD RANCH "Registered Herefords Since 1937"

Arlan
2500 E. Hwy. 180
Lamesa, TX 79331
806/497-6412
Mobile: 806/759-8102



Bull & Heifers for Sale J-HEREFORD RANCH

Jim Darnell - Owner
5 Paseo de Paz Lane, El Paso, TX 79932
915-479-5299 (Jim's Cell) • 915-549-2534 (Sue's Cell)
915-532-2442 (Office) 915-877-2535 (Home)
email: barjbarherefords@aol.com

"Texas' Only Hereford Operation West of the Rio Grande"
Se Habla Espanol



JAMES L. POWELL

www.powellranches.com
Ft. McKavett, TX 76841

325/653-1688 Office
325/853-2316 Res.

David Neal
Ranch Manager
325/651-2826

Ranch located 25 miles
east of Eldorado on Hwy. 190.

Britt Mynatt
Herd Manager
325/853-2202

KNOX HEREFORDS

Tee & Joan Knox
Box 68 • Tarzan, TX 79783
432/459-2273
www.knoxherefords.com
Cattle for sale at the ranch.

McKNIGHT Ranch Co.

Bobby McKnight, Ranch Manager
432/426-3003
P.O. Box 1042 • FT. DAVIS, TEXAS 79734

ROCKING CHAIR RANCH

L.C. Whitehead, Owner
Randy Wood, Mgr. • 325/396-4911
Mark McClintock, Consultant
Mobile: 325/650-4223
5749 Rocking Chair Lane
Ft. McKavett, TX 76841



BUTTON ESTES RANCH, LTD.

BUTTON ESTES, JR. & PATRICIA ANN ESTES
1921-1998 GENERAL PARTNER
432/683-1406 • Fax 432/570-7769
2000 WEST TENNESSEE • MIDLAND, TEXAS 79701
BEAU & BARBARA 432/682-2272 • GINNY 432/687-2454

RAFTER J CATTLE CO.



Colt Johnson • 325-280-7975
Larry Johnson • 325-692-3940
1917 Hillside Rd • Abilene, TX 79603
rafterj@dishmail.net • www.rafterjcattle.com

WEINHEIMER RANCH, INC.

Established in 1921

For All Your Cattle Needs

Roy 830/644-2226 Box 957 Stonewall, TX 78671 Len 830/889-2026

Mimms Herefords

Jerry, Brady, Rhett & Ryan
Lorenzo, Texas
806-842-3459



LINE ONE HEREFORDS

• Light Birth Weights • Gentle Disposition
• Milk and Growth • Longevity

CIRCLE ME RANCH Gardendale, TX • Seminole, TX

Miles and Mary Eckert
16020 N. Wichita Ave. • Gardendale, TX 79758
432/563-2627 (Res.) • 432/559-9667 (Off/Ranch)

Since 1947

Walker Herefords

Stamford, TX • La Grange, TX

Don 325-773-2062

Tom 979-247-4119 • Cell 979-966-8353

Show Steers For Sale

MANN CATTLE CO. LUBBOCK, TX

Mark, Briss, Hadley and
Colby Mann
Hadley (cell) 432-788-8375
Mark 432-788-7075
Res. 806-762-8697

The Functional Kind e-mail: mannm1@yahoo.com
www.manncattle.com

SCHARBAUER RANCH LLC

Known for the best commercial Herefords
and ranch horses in the state.

To purchase Hereford females or horses call:
Chris Scharbauer
Res. 806-935-9411 • Cell 806-679-7995
P.O. Box 50008 • Amarillo, TX 79159



CLYDE HENSON

P. O. Box 820 • Kermit, TX 79745
432-940-8882



Massey Hereford Ranch

Sam and Kila Massey
P. O. Box 518 • Wickett, TX 79788
432-940-7720
Sam.Massey@co.ward.tx.us
www.masseyherefordranch.com



FEBRUARY 2, 2013


Make plans to attend
THA ANNUAL MEETING
in Fort Worth

PANHANDLE / OUT-OF-STATE / COMMERCIAL



RANCHES, INC.
Jo Ellard, Owner
 P. O. Box 802207 • Dallas, Texas 75380
 Office (972) 532-2100 • Fax (972) 532-2190


Ray Meyer, Manager
 RR 1, Box 108A • Fall River, Kansas 67047
 (620) 658-4494 • Fax (620) 658-4426



TOMMY BARNES
 -AUCTIONEER-
 2060 S. Hull Street
 Montgomery, AL 36104
 334/462-4004



Indian Mound Ranch
 923 Hillside Ave. • Canadian, TX 79014
Lee & Jacqui Haygood
 Res: 806/323-8232
 Cell: 806/323-2906
 Email: lee@indianmoundranch.com
 www.indianmoundranch.com



Debter Hereford Farms
 Glynn Debter (205) 429-2040
 Perry Debter (205) 429-4415
 Fax (205) 429-3553
 4134 Co. Hwy. 30 • Horton, AL 35980



SCHACHER AUCTION SERVICES
Robert Schacher
 817-219-0102
 5832 Wales Ave., Ft. Worth, TX 76133
 rob@schacherauction.com
 www.schacherauction.com

BARBER RANCH
 Channing, Texas 79018
 Dale & Mary Barber 806/235-3692
 Justin Barber 806/681-5528
 www.barberranch.com
 email: barberranch@wildblue.net



Michael & Connie Perez
 575/633-2038
 Michael's cell 575-403-7970
 Kyle's cell • 575-403-7971
 Drew's cell • 575-403-7115
 901 Quay Road 96 • Nara Visa, NM 88430



LEO CASAS, III
 Off: 361-362-COWS • Fax 361-362-1035
 Cell: 361-362-5863
 casascattle@hotmail.com
 171 Fairway Ridge • Beeville, TX 78102

Mike & LaReshia Bragg
 1923 Shawnee Trail
 Dalhart, TX 79022
 home 806-249-5367
 cell: 806-333-4486
 website: mlcattle.com • Email: mlcattle@mlcattle.com



COOPER HEREFORD RANCH
 Mark & Cristy
 off: 406-285-6985
 cell: 406-539-6885
 P.O. Box 126
 Willow Creek, MT 59760
 mark@cooperherefords.com
 www.cooperherefords.com



Silveus INSURANCE GROUP
 877.773.9633
 www.rangelandinsurance.com

B & C CATTLE CO.
Bill or Chad Breeding
 1301 N. Lions • P.O. Box 186
 Miami, TX 79059 (806) 868-4661 or (806) 570-9554
 breeder@amaonline.com

MESSNER HEREFORDS

 Milton Messner (580) 837-5384
 Van Messner (580) 837-5532
 Route 1, Box 350 • Laverne, OK 73838



Ezy-Lift www.ezylift.com
 John Winsauer
 713.614.9005
 win@ezylift.com

Since 1908
Pronger Brothers
 Breeders of
 Registered Hereford Cattle
 Stratford, Texas 79084
 Phone: 806/769-4474 or 4473


MILLIGAN HEREFORDS Since 1919
Kings, IL 61068
 Robert (815) 562-6391 James (815) 562-4946
 Malcolm (815) 562-5879

Livestock Insurance • Import • Export

HOWARD MILLER, INC.
 P.O. Box 122537 • Fort Worth, Texas 76121-2537
 Howard Miller 817/732-1872 David Miller
 Representing American Livestock Insurance Co.



Quality Herefords For Sale
SUMMEROUR RANCH
 Allan Ricketson, Ranch Manager
 Res: 806-384-2177 • Cell: 806-333-0624
 806/384-2110 • 4438 FM 3212 • Dalhart, TX 79022



PRAIRIE MEADOW HEREFORDS
 2620 E. Lake Shore Drive • Springfield, IL 62707
 Office (217) 529-8878 • Fax (217) 529-9374
 Greg (217) 498-7095 • Gail (217) 529-4933
 Mark and Carla (217) 483-5651

DUFUR HEREFORDS
 P. O. Box 166 • Caddo, OK 74729
 Bill Dufur • 580-367-9910
 Alan Dufur • 580-775-3830

www.copelandherefords.com
Copeland Herefords
 859 Romero Rd • Nara Visa, New Mexico
 Clifford Copeland • 575.633.2251
 Cliff Copeland • 575.403.8123
 Matt Copeland • 580.336.8284
 @copeland@plateautel.net



1/5 HOFFMAN RANCH
 modern, stout, functional
 P.O. Box 287 Thedford, NE 69166
 jason@hoffmanranch.com
 www.hoffmanranch.com

Denny and Dixie Hoffman 530-336-5778
 Jason and Kaycee Hoffman 530-604-5096

HOLDEN HEREFORDS
 "The Best in Line 1 Breeding"
Jack and Tresha Holden
 3139 Valier Dupuyer Rd. • Valier, MT 59486
 406-279-3301
 406-279-3300 Ranch • 406-450-1029 Mobile
 www.holdenherefords.com



B & H Herefords
 Phil Harvey, Jr. 575-524-9316
 Cell 575-644-6925
 P. O. Box 40
 Mesilla, NM 88046
 Philharveyjr@comcast.net

Jim Bob Burnett
 Cell 575-365-8291
 P. O. Box 1566
 Hope, NM 88250
 jbb@pvtnetworks.net
 bhherefords.com

LARGENT and SONS
 Hereford Cattle Since 1902
 P.O. Box 66 • Kaycee, WY 82639
 307-738-2443 or 307-738-2297
Sale Date: November 2012
 largentandsons@yahoo.com
 www.largentandsons.com

S - W HEREFORDS
 BENNINGTON, OK
 Ryan Westbrook 580-775-8053
 Neal Spencer 817-845-1382
 www.swherefords.com

COMMERCIAL

Craig Curtis
HayMaster™
 Nutrition Injection Systems, Inc.
 682.201.8026 • Toll Free 877.480.7870
 ccurtis.haymaster@gmail.com • www.haymastersystems.com
 Authorized dealer for HayMaster Nutrition Injection Systems, Inc.




Steele Embryo Service
DR. MARK E. STEELE **REGER BREEDING SERVICE**
 Embryo Transfer, Donor & Recipient
 Freezing, Sales Management
 126 Fawn Trail
 Graham, TX 76450 HC 60 Box 315
 (940) 549-8117 Graham, TX 76450
 (940) 549-2936 (940) 549-0919 Fax
 (940) 704-2253 Mobile (940) 521-1291 Mobile

Midcontinent Livestock Supplements
MLS Forage Enhancing Program
www.mlstubs.com
 Kyle Latham
 254-715-2162
 Valley Mills, TX



Mark & Teresa McClintock
 Registered Herefords • Sales and Consulting
 Mark (325) 650-4223 • Teresa (325) 763-9202
 10614 Mule Creek Road • San Angelo, TX 76901
mcclintock@wcc.net • markandteresamcclintock.com

JOHNSON
 CATTLE MARKETING
 Tom Johnson
 440 FM 246 • Wortham, TX 76693
 903/599-2403 • cell: 817/291-5121

44th Annual
Whiteface Replacement
FEMALE SALE
Sunday, February 3, 2013

Circle H Headquarters, LLC
 •Pregnancy ELISA testing
 •BVD PI testing
 •NIR Feed & Forage Testing
C. Scanlon Daniels, DVM
 PO Box 1150
 3216 US Hwy 54 East
 Dalhart, TX 79022
 806-244-7851 office
 806-333-2829 cell
 806-244-7852 fax
www.circleh.info
scanlon@circleh.info




Cowtown
 Select Sale
Sunday, Feb. 3, 2013

Pre-press production of *Texas Hereford* magazine since 1995
We'll make you look great on paper.
 Park Place Enterprises, Inc.
 817-877-8901 • ggpark@flash.net



Gorman Milling Co., Inc.
 Manufacturer of
 Red Chain Feeds
 Gorman, TX
 (800) 588-2252
REDCHAINFEEDS.COM



events **CALENDAR**

Dec. 7-8: Western Nugget National Hereford Show, Reno, NV

2013

Jan. 4: Sandhills Hereford Show, Odessa

Jan. 17-19: National Western Stock Show, Denver, CO

Jan. 26: Junior Hereford Heifer Show, Fort Worth

Feb. 2: THA Annual Meeting, Fort Worth

Feb. 2: Messner Herefords Production Sale, Slapout, OK

Feb. 2: South Texas Hereford Assn. Sale, Beeville

Feb. 3: THA Whiteface Replacement Female Sale & Cowtown Select Sale, Fort Worth

Feb. 4: National Hereford Show, Fort Worth

Feb. 11: S.A.L.E. Open Hereford Show, San Antonio

Feb. 13: S.A.L.E. All Breed Bull & Female Sale, San Antonio

Feb. 15: S.A.L.E. Junior Combined Hereford Show, San Antonio

Feb. 15: Hoffman Ranch First Annual Bull Sale, Thedford, NE

Feb. 17: San Angelo Junior Hereford Heifer Show, San Angelo

Feb. 20: S.A.L.E. Hereford Steer Show, San Antonio

Feb. 25: Houston Open Hereford Show, Houston

Feb. 25: Colyer Herefords Production Sale, Bruneau, ID

Feb. 26: Mill Creek-Pied Piper Sale, Alma, KS

Feb. 27: Houston All Breed Bull Sale, Houston

Mar. 2: Houston All Breed Female Sale, Houston

Mar. 9: The Black Hereford Sale, Alvarado

Mar. 9: NE Texas Hereford Assn. Sale, Mt. Pleasant

Mar. 10: Houston Junior Hereford Heifer Show, Houston

Mar. 11: Holden Herefords Production Sale, Valier, MT

Mar. 12: Cooper Hereford Ranch Production Sale, Willow Creek, MT

Mar. 13: Houston Hereford Steer Show, Houston

Mar. 23: Cross Timbers Hereford Sale, West

Apr. 6: MW Herefords Production Sale, Brownwood

Apr. 6: GKB Cattle Internet Sale, Waxahachie

June 19-22: Texas Junior Hereford Association Combined State Show, Belton

July 14-20: 2013 Junior National Hereford Expo, Kansas City, MO

Herefords

FOR SALE

3 coming 3 year-old bulls; 17 spring coming twos; 22 weaned bull calves, 7-11 months old.

Contact: B&H Herefords
Pinon, NM
Phil Harvey, Jr. 575-644-6925
philharveyjr@comcast.net
Jim Bob Burnett
575-365-8291
bhherefords.com

20 bulls for sale.

Contact: 3-B Herefords
J.H. Blankinship
Paris, TX 75460
903 784 2677

Two-year old bull, MR J150 Rob's LV, Reg. P43230551 sired by GKB Cold Front B776ET. Performance pedigree with superior rib eye area and solid marbling for greater production and profitability.

Contact: William Cable
Uinta Farms, LLC
Tyler, TX 75703
903-894-8789 (res.)
540-470-0518 (ranch)
brccable@gmail.com

5 two-year old bulls horned and polled and 5 long yearling bulls for sale.

Contact: Carver Herefords
Cotton Center, TX 79021
Office: 806-879-2166
806-292-4444 (David cell)
806-679-2370 (Jim Bob cell)

30 fall yearling bull calves.

Contact: Jack Chastain
Mockingbird Hill Herefords
Mineral Wells, TX 76067
817-821-3544

ACTIVE MEMBERS

can list cattle for sale FREE on this page
non-member rate: \$50
e-mail your listing to:
texashereford@sbcglobal.net

2 October '11 Polled Hereford ET bulls, MSU TCF Titelist 2T ET x Star KKH Brite Kessie 266S ET. These bulls are full brothers to the 2011 National Champion Polled Female Star KKH Mirror Image shown by Mallorie Phelps.

Contact: Cutting Edge Cattle Co.
James Holder
817-879-4675
John Mehaffey
817-271-3848

5 virgin Registered Line 1 bulls, 16 - 18 months old.

Contact: Jim or Sue Darnell
El Paso, TX 79932
915-877-2535 (res.)
915-479-5299 (Jim's cell)
915-549-2534 (Sue's cell)

1 - 24 month old bull; 23 yearling bulls, all L1 Mark Donald breeding. A few top show heifer prospects also for sale.

Contact: Doyle Hereford Ranch
Wolfe City, TX 75496
214-240-4538 (cell)
mdoyle0326@yahoo.com
http://www.bullshop.com/tx/
doyleherefordranch.php

20 running age Line One cows, bred for late fall-early spring calves.

Contact: B. Edgar
Edgar Ranch
Blanket, TX 76432
254-842-6047
325-642-2651 (cell)
abedgar@cctc.net

Breeding age bulls, show heifers, cow, pairs available at all times.

Contact: H2 Ranch
Madisonville, TX 77864
936-349-0439
h2ranc@rodzoo.com
www.H2RANCHANDCATTLE.com

25 Long yearling bulls for sale with P606 and Online breeding. The bulls are located at Canton, Van Zandt County, TX. We also have hay available for anyone still needing hay for this feeding season. It is good 4x5'9" rolled cow quality hay.

Contact: Dale Hester
Rockin 4H Ranch
Canton, TX 75103
903-340-5006

3 pair: 1 bull calf by 719T; 1 bull calf by Intensifier; 1 heifer calf by Pandemonium. 5 bred heifers - could be show heifers.

Contact: Charles Holloway
CSH Farms
Tioga, TX 76271
940-727-9613

7 yearling bulls for sale.

Contact: Pete Johnson
Sunny Hill Ranch
Lufkin, TX 75904
936-632-1465 (days)
936-465-1672 (cell)

4 yearling bulls; 5 dry cows, 5-7 years old, bred. 3 yearling open heifers. All straight Anxiety 4th.

Contact: Roland Lang
Lampasas, TX 76550
512-556-6469 (res.)
512-556-7956 (cell)
wandalang48@yahoo.com

Ten bulls for sale.

Contact: Jerry or Cindy Leaverton
Fairview Hereford Farm
Henrietta, TX 76365
940-538-4041
940-867-7196 (cell)

Two horned two-year-old bulls and six horned Sept 2011 bulls for sale.

Contact: Kurtis Mathias
Mt. Pleasant, TX 75455
903-572-2396
903-573-1791 (cell)
Kmathias@txk.net

3 bulls for sale - Horned Herefords from Pure Gold, Yankee, and Dutch breeding. The Dutch bull is a yearling; the others are 16 months old.

Contact: Joel McClatchy
Eagle Ranch
Blum, TX 76627
214-850-5926
joelmcclatchy@charter.net

Two-year old, Polled Easy Deal son, great disposition.

Contact: James Morgan
Morgan Herefords
Andrews, TX 79714
432-853-3001
Email: james_t_morgan@yahoo.com

2 year-old Hereford bull for sale.

Contact: Curtis Wilkerson
Murphey's Circle M Ranch
Meridian, TX 76665
254-253-0718 (Curtis' cell)
254-855-1276 (Jane's cell)

2 bulls, 20 months old. Ready for service.

Contact: Ronny Raines
Denison, TX 75021
214-437-7919
rgraines@aol.com

Breeding age Horned Hereford Bulls for sale. Several to choose from.

Contact: Sjolander Ranches
Riesel, TX 76682
254-379-8983 George's cell
254-412-8213 Jan's cell

6 - yearling+ Hereford bulls, by top bloodlines HH 8203, HH 5212, HH 5061-Pure Gold. Solid EPD's, gentle disposition.

Contact: Lee Terrell
Sherman, TX 75092
903-893-2289 (Res.)
903-815-1299 (cell)
leeterrelland@gmail.net

23 Angus influence heifers. 10 head calve in April, 13 head exposed 60 days to low birthweight Angus bulls.

Contact: Cole Turner
Rochester, TX 79544
940-742-3347

Herd Reduction Sale: Excellent selection of cows, heifers and young bulls. Proven bloodlines including Felton 517 DCC Quantity 3008 and American Nick.

Contact: Wendee Whitehead
Whitehead Herefords
Rusk, TX 75785
512-970-1595
903-683-4874 (east Texas)
www.whiteheadherefords.com

Private Treaty - Registered Hereford Bull Sale, 18-24 months-old, horned and polled. Ready to go to work.

Contact: Williams Family Herefords
Herb Williams, Ranch Mgr.
Henrietta, TX 76234
940-393-1650 cell
940-466-3381 home
940-466-7237 Fax
herbsusan@msn.com

★ advertisers INDEX

Alpha Equine Breeding Center	24	Gorman Milling Co., Inc.	5, 27	Muleshoe Ranch	24
Atlas Farms	23	Grett, Harry & Cheryl	23	Neel, Jr., George E.	24
B&C Cattle Co.	26	H2 Ranch and Cattle Co.	23	Nelson, Jim	23
B&H Herefords	26	HayMaster	27	Noack, Leon	23
Barber Ranch	26	Henson, Clyde	25	Nolan, Scott	1st Cover, 23
Barnes & Sons, Randall	23	Herrmann Cattle Co.	23	Park Place Enterprises	27
Barnes, Tommy	26	Hidden Oaks Ranch	24	Pied Piper Farms	25
Bar S Herefords (Larry Schatte)	23	Hoffman Ranch	26	Powell, James L.	25
Bell Farms, Jim G.	23	Holden Herefords	26	Prairie Meadow Herefords	26
Bragg, Mike & LaReshia	26	Howard Herefords	24	Pronger Bros.	26
Buchholz, Gary and Kathy	23	Indian Mound Ranch	26	Pullen, Jackie	23
C&M Herefords	26	Jackson Hereford Ranch	24	Rafter J Cattle Co.	25
Carroll, L.J. (C2 Cattle Co.)	24	Johnson Cattle Marketing	27	Rockin' W Polled Herefords	24
Carver Herefords	25	Johnson, Pete	23	Rocking Chair Ranch	25
Casas, III, Leo	26	Knox TY Herefords	25	S-W Herefords	26
Case Ranch	25	Lang, Roland	24	Schacher Auction Services	26
Circle H Labs	27	Largent & Sons	3rd Cover, 26	Scharbauer Ranch LLC	25
Circle M Ranch	24	Larson Polled Herefords	23	Schlegel, R. & Sons	24
Coates Ranch Co.	25	Lee, Ira	25	Silveus Insurance	26
Cooper Hereford Ranch	26	Lesley Herefords	24	Sjolander Ranches	24
Copeland Herefords & Sons LLC	26	Locklear, Ward (MW Herefords)	24	Skrivanek Ranches	23
Covered M Ranch	24	Lone Star Herefords	24	South Texas Hereford Assn.	5
Darnell, Jim	25	M6 Ranch	23	Spearhead Ranch	24
Davis, Paul	23	McClatchy Eagle Hereford Ranch	23	Steele Embryo	27
Debter Hereford Farm	26	McClintock, Mark & Teresa	27	Still River Ranch	23
Decker Cattle Service	23	McInnis Cattle Co.	25	Stuart, Brad	25
Dominey, Sam	23	McKnight Ranch Co.	25	Summerour Ranch	26
Doyle Hereford Ranch	23	McMullin Ranch	4, 19	Terrell, Lee	23
Dudley Bros.	4th Cover, 24	Mann Cattle Co.	25	Theuret, Wesley	24
Dufur Herefords	26	Massey Hereford Ranch	25	Turner, Cole & Susan	5
Eckert, Miles & Mary	25	Mathias, Kurtis	23	W4 Ranch	3
Edgar Hereford Ranch	24	Messner Herefords	26	Walker Herefords	25
Ellard, Jo	26	Metch Polled Herefords	23	Weinheimer Ranch, Inc.	25
Estes Ranch, Button	25	Mezger, Jeff (Honeymoon Herefords)	25	Williams Family Herefords	23
Ezy-Lift	26	Midcontinent Livestock Supplements	5, 27	Wilson, Ross	24
Flying 'S' Herefords	24	Miller, Howard	26	Winsauer Herefords	24
Fuston Herefords	25	Milligan Herefords	26	Youngblood, Arlan	25
Gibbs, W. Paris	23	Mimms Herefords	25	Younts & Son, Curtis	1, 24
Gordon Ranch, W. K.	24	Mockingbird Hill	24		

Reach Tomorrow with COMFORT!



GH NEON 17N [CHB]
 GH RAMBO 279R [CHB,DLF,HYF,IEF]
 HR GOLD DOMINO 251E
SIRE: L3 DESERT FOX 842 ET [DLF,HYF,IEF]
 DESERT GOLD 1003
 L3 LADY GOLD 358 [DLF,IEF]
 L3 GENETIC LADY C6
 GK GENETIC EXPLOSION [SOD,CHB,DLF,HYF,IEF]
 L3 GENETIC KING 169 [CHB,DLF,HYF,IEF]
 L3 LADY EDGE 938
DAM: L3 MISS GENETIC EDGE 835
 GOLDEN ACHIEVER 2072 [DLF,HYF,IEF]
 L3 LADY PREMIER 613
 L3 MISS HEFTINA 078 [DOD]

EPDs	CED	BW	WW	YW	MILK	M&G	CEM	MCW
	+0.5	+3.5	+56	+92	+23	+51	-0.5	+108
	SC	FAT	REA	MARB	BMI	CEZ	BII	CHB
	+0.8	+0.015	+0.55	+0.14	+\$17	+\$14	+\$14	+\$28

It has been quite a while since a line-bred “numbered up” athlete has stepped into the Champion’s circle at a major show. Desert Comfort is all that and more! Besides tracing back to King Ten a whopping 7 times, he has several generations of long-lasting, range-proven mama cows on both sides of his pedigree.

We have used him on first calf heifers as well as several of our best cows with great results. May we suggest that you study his numbers, analyze his excellence, then raise your own “Comfort” level by using this bull!

Semen @ \$25/straw; Certificates at \$60

LARGENT AND SONS

Hereford cattle since 1902

P.O.Box 66

Mark & Cathy: 307-738-2443
 Mark's cell: 307-267-3229

Kaycee, WY 82639

Fax: 307-738-2297
 Dave's cell: 307-267-4491

10 miles south of I-25

e-mail: largentandsons@yahoo.com • website: www.largentandsons.com

*To all our customers,
thank you
for making 2012 a great year!*



...and from our family to yours, best wishes for a Merry Christmas



DUDLEY BROS.

BOX 10 • COMANCHE, TEXAS 76422

Office 325-356-2284 • Fax 325-356-3185

John 325-356-3767 • Cell 325-642-0745

Tom 325-356-3918 • Cell 325-642-0748

Dudleybros@comanchetx.com • www.dudleybros.com