

TEXAS HEREFORD

The Official Publication of the Texas Hereford Association

September 2012



DM BR L1 Domino 146

Now at our ranch,
still pasture breeding
and... siring great prospects.



TRAIT LEADER

EPDs	CED	BW	WW	YW	MILK	M&G	CEM	MCW	SC	FAT	REA	MARB	BMI	CEZ	BII	CHB
	-4.1	+3.7	+59	+93	+18	+47	+2.9	+79	+1.4	+0.045	+0.76	-0.13	+\$20	+\$12	+\$19	+\$21

REMITALL NORTHLIGHT 152N
 REMITALL TEAMSTER 9T
 REMITALL PET 174P
 REMITALL KEYNOTE 20X [CHB,SOD] • P23631818
 REMITALL LIMELIGHT 40L
 REMITALL PATRICIA 99P
 REMITALL MARIGOLD 63M
DM BR L1 DOMINO 146 [CHB,DLF,IEF] • P42206523
 L1 GENVIR 430 4ET [DLF,HYF,IEF]
 L1 GENVIR 244 [DLF,IEF]
 L1 MS GENVIR 218 ET
DM L1 DOMINETTE 518 • 41096461
 HH ADVANCE 530T
SL L1 MAYBELLINE 331
 IH 066 DOMINETA 6416



**BUILDING OUR PROGRAM AROUND
 CHAMPIONS ...
 BOTH KIDS & CATTLE**

NOLAN HEREFORDS

Scott, Alise, Ilissa, Bethany & Audrey
 1950 Skylark Rd • Gilmer, TX 75645 • nolanherefords@aol.com
 Res. 903-797-6131 • Cell: 903-738-5636
 Steve Decker, Herdsman • 254-582-4310
 www.nolanherefords.com

SELLING IN THE TEXAS HEREFORD FALL CLASSIC

October 24, 2012 • Buffalo, Texas



F&F JDM ROCKER 115

Calved 04/02/11 • #43312316 • Tattoo: 115

STAR ROCK DOMINO 5N [DLF,IEF]
C Y STAR ROCK 24
CY GOLDEN LADY 271
BR DM 15 KEY 1167
F&F JDM DAISY 896
F&F MS DREAM SCICLE 301

BW +3.7 / WW +40 / YW +63 / MM +15 / M&G +34 / REA +0.16 / IMF -0.02



F&F ROCKER 123

Calved 04/21/11 • #43312318 • Tattoo: 123

STAR ROCK DOMINO 5N [DLF,IEF]
C Y STAR ROCK 24
CY GOLDEN LADY 271
BR DM 15 KEY 1167
F&F JDM MS KEY 892
FCC MS STAR MARK 045

BW +3.1 / WW +37 / YW +59 / MM +13 / M&G +31 / REA +0.12 / IMF +0.02

We invite you to be with us on

October 4, 2012

for the

TSCRA Ranch Gathering, Salado, Texas

AHA Golden Hereford Breeder

Herefords Since 1959

CURTIS YOUNTS & SON

Cell: 254/760-0243 • Res: 254/939-6492
3648 Elmer King Rd. • Belton, TX 76513

TEXAS HEREFORD

Official publication of the Texas Hereford Association

September 2012 • Vol. 61, No. 10

Mission Statement

The Texas Hereford Association will provide the leadership to unite, foster and protect the interest of the Hereford breed; and promote fairly the production and consumption of Hereford beef universally.

Features

- 7 West Texas Rehabilitation Center
Readies for Fall Sales
- 13 THA Fall Classic Hereford Sale
Sale Catalog
- 25 Genetic Development Center
- 28 Prepare Your Estate Plan for Changes in Tax Rules
brought to you by Jacqueline N. Davie

Departments

- 8 Bulletin Board
- 8 Obituaries
- 10 Tailgate Talk
- 25 Auxiliary News
- 34 Calendar of Events
- 35 Cattle for Sale
- 35 Advertisers Index

On The Cover

This issue advertises all the fall bull sales in Texas. The bulls on the cover are from Summerour Ranch of Dalhart and will sell at the THA Fall Classic on October 24, Buffalo, TX.

Photo by Jack Chastain.

THE TEXAS HEREFORD (ISSN 0744-4761) (USPS 616-680) is published monthly except for the month of July by the Texas Hereford Association.
POSTMASTER: Please send change of address notices to The Texas Hereford, 4609 Airport Frwy., Ft. Worth, TX 76117. Periodical postage paid at Ft. Worth, TX.
Subscription rate: One Year, \$15.00
Advertising rates on request. Contributions to the editorial pages are welcome, but the magazine cannot be responsible for the return of unsolicited material.

Texas Hereford Association Officers

Jay Wright, Morgan, president
Gary Buchholz, Waxahachie, president-elect
Terri Barber, Austin, vice-president
Chad Breeding, Miami, vice-president
Dr. John Mehaffey, Burleson, vice-president
Jack Chastain, Fort Worth, secretary-treasurer
Scott Nolan, Gilmer, past-president

Executive Committee

John Dudley, Comanche
Bill McInnis, May
Berry Summerour, Houston
John Winsauer, Beeville
Curtis Younts, Jr., Belton

Directors

Randy Barnes, Granbury
Pete Case, Eldorado
Sue Darnell, El Paso
Mark Ebeling, Cleburne
Dusty Greaves, Coleman
Kevin Hartley, Madisonville
Larry Johnson, Abilene
Steve Lesley, Stephenville
Bill McInnis, May
Donlie McMullin, Copperas Cove
Jim Nelson, Plano
Steve Noack, Rockdale
Kyle Perez, Nara Visa, NM
Brie Whitehead Perks, Fort Worth
James Schmidt, Mason
Keith Schmidt, Gonzales
Ron Smith, Fredericksburg
Neal Spencer, North Richland Hills
Tom Walker, LaGrange
John Winsauer, Beeville
Wayne Baize, Ft. Davis
Dr. M.C. Baker, Granbury
Dennis Braden, Stamford
Swasey Brainard, Pampa
Austin Brown, III, Beeville
James Dangelmayr, Muenster
Harry Dudley, Comanche
John Dudley, Comanche
James Floyd, Wink
Bradley Hale, Miami
Ira Lee, Willow City
Joshua Martin, Floresville
Brady Mimms, Lorenzo
Jane Murphey, Meridian
Dan Nance, Haslet
David Neal, Ft. McKavett
Jackie Pullen, Rockwall
Monroe Schatte Jr., Giddings
J.D. Schmidt, Hondo
Curtis Younts, Jr., Belton
Jimmy Atlas, Grandview
Dr. Stephen Coates, San Angelo
Matt Copeland, Nara Visa, NM
Tom Dudley, Comanche
Mark Ellison, College Station
Mike Fuston, Turkey
Jerry Lewis, Valley View
Dimitri Mataragas, Athens
David Moore, Hamlin
David Morris II, Marquez
J.D. Ragland, Canyon
E.C. Rosson, Milford
Ron Schlegel, Olney
Dr. Mark Steele, Graham
Reed Stewart, Sterling City
Brad Stuart, Roby
Berry Summerour, Houston
Lee Terrell, Sherman
Susan Turner, Rochester
Lynn Weinheimer, Stonewall

TEXAS HEREFORD

4609 Airport Freeway • Fort Worth, TX 76117
www.texashereford.org
817/831-3161 • Fax: 817/831-3162
texashereford@sbcglobal.net
Jack Chastain, *Manager/Editor*
Penni Hiles, *Assistant Editor & Circulation*
Park Place Enterprises, *Design*
Lee Chastain, *Photo Production*

AFFILIATED WITH

LPC – Livestock Publications Council
National Cattlemen's Beef Association
American Hereford Association
Texas & Southwestern Cattle Raisers Association
Texas Purebred Cattle Alliance

W4RANCH

Annual Production Sale

12:00 Noon, Friday, October 19, 2012

AT THE RANCH

Selling 110 Bulls

85 full 2-year-olds, 25 18-month-olds

W4 RANCH



This sale will be broadcast live on the internet.

DVAuction

Broadcasting Real-Time Auctions

Real time bidding & proxy bidding available.



Our gates are always open for visitors!

Registered Herefords and Certified F-1s

Bosque County, since 1961

Jay Wright, Manager • 254-635-4444 office

254-396-2584 mobile • Email: jay@w4ranch.com

P.O. Box 9 • Morgan, Texas 76671

James, Joe & Joey Walker

Catalog will be online at:

w4ranch.com

W4RANCH

W4 Steele Creek Ranch
FM 927, Morgan, Texas



Sale managed by

JOHNSON
CATTLE MARKETING

Tom Johnson

440 FM 246

Wortham, Texas 76693

903-599-2403

Mobile 817-291-5121

tom@johnsoncattlemarketing.com

POWELL HEREFORDS

15TH ANNUAL PRODUCTION SALE
TUESDAY, OCTOBER 9, 2012

Six Mile Ranch Ft. McKavett, Texas 11:30 Lunch 12:30 Sale
(Located 25 Miles East of Eldorado on HWY. 190)

BUILDING BETTER BEEF



THESE BULLS SELL!



WITH POWELL HEREFORD GENETICS.

OFFERING 100 BREEDING-AGE BULLS,
100 HEAD OF POWELL RANCH RAISED HEIFERS

James L. Powell - Ft. McKavett, Texas 76841

Res: (325) 853-2316 Office: (325) 653-1688

www.powellranches.com • jlpooffice3@gmail.com

David Neal, Ranch Manager (325) 651-2826

Britt Mynatt, Herd Manager (325) 853-2202

JOHNSON
Cattle Marketing
Tom Johnson, Sale Mgr.
(903) 599-2403

SUPERIOR
Productions
BIRDY, CLAY
5004 Newell, Ct, 001



Barber Ranch Annual Bull Sale

Wednesday, November 14, 2012

Jordan Cattle Auction, San Saba, Texas

Featuring 80 horned & polled Hereford bulls

Stout made, heavy muscled, deep ribbed bulls that have both high performance and eye appeal...straight from the renowned Barber Ranch breeding program!

Also selling

- 20 Barber Ranch registered replacement females
- 20 Angus bulls from Express Ranches, Yukon, OK
- 10 Charolais bulls from Marti Charolais, Cleburne, TX



Sale broadcast on RFD-TV.

Sale time: 11:00 a.m.



Don't miss out

Internet Heifer Sale



October 24-26, 2012 Timed Auction

Selling the top spring-born Hereford show & donor prospects!
View the videos online!

We are honored to have had Kirbie Day show Barber Ranch heifers throughout her illustrious career, starting with Showline in 2003...National Champion Kansas City, Denver and Fort Worth! The big story we are most proud of is what Kirbie did with these females AFTER their show careers. Kirbie produced National Champion cattle for herself AND her customers! Great job, Kirbie!

KLD BR Lass Caroline DIII ET
Daughter of BR Carol Charming 5020 ET

2012 Junior National Hereford Expo Grand Champion
Bred-&Owned Heifer for Kirbie Day, Waxahachie, Texas!



Barber Ranch

Ranch (806) 235-3692
Dale Barber (806) 673-1965
Justin Barber (806) 681-5528
Mary Barber (806) 930-6917
10175 FM 3138, Channing, TX 79018
barberranch@wildblue.net • www.barberranch.com

Please contact the ranch for more information about either sale or to receive your free Barber Ranch Bull Sale catalog. Visit us online at: barberranch.com.

Cattle, Embryos & Semen Packages
Available Year Round

ANNUAL PRODUCTION SALE

Thursday, Sept. 27, 2012 • Noon • At the Ranch



- 4 Yearling Hereford Bulls
- 33 Coming Two-Year-Old Hereford Bulls
- 4 Two-Year-Old Hereford Bulls
- 12 Coming Two-Year-Old Angus Bulls
- 14 Fall Calving Hereford Cows
- 10 Spring Calving Bred Hereford Heifers

IMR 955W DOMINO 1093Y — 43195901

Sire: CL 1 DOMINO 955W • MGS: C GAME PLAN 2040
 BW 3.3; WW 60; YW 98; MM 24; M&G 54; FAT -0.011; REA 0.69; MARB -0.02

• This is an exceptional herd bull prospect that combines great phenotype with great performance. He is athletic, gentle, has a beautiful front end and still has plenty of volume and muscle thickness.



IMR 9038W ADVANCE 1036Y — 43184298

Sire: IMR 9038W ADVANCE 1036Y • MGS: IMR 9038W ADVANCE 1036Y
 BW 3.4; WW 53; YW 84; MM 20; M&G 50; FAT -0.007; REA 0.46; MARB 0.04

• This bull is the same complete bull that we have in the catalog for sale. He has a great front end and plenty of volume and the best of the game plan genetics. He has a lot of volume and a lot of muscle and the best of the game plan genetics. He has a lot of volume and a lot of muscle and the best of the game plan genetics. He has a lot of volume and a lot of muscle and the best of the game plan genetics.



IMR 9038W ADVANCE 1035Y — 43184281

Sire: IMR 9038W ADVANCE 1036Y • MGS: IMR 9038W ADVANCE 1036Y
 BW 4.0; WW 50; YW 80; MM 20; M&G 54; FAT -0.005; REA 0.44; MARB 0.06

• This is a good looking bull out of a terrific sire and he has a lot of volume and a lot of muscle and the best of the game plan genetics. He has a lot of volume and a lot of muscle and the best of the game plan genetics. He has a lot of volume and a lot of muscle and the best of the game plan genetics.



IMR 9038W ADVANCE 1034Y

Sire: IMR 9038W ADVANCE 1036Y • MGS: IMR 9038W ADVANCE 1036Y
 BW 4.0; WW 51; YW 80; MM 20; M&G 54; FAT -0.008; REA 0.44; MARB 0.06

• This is a great bull out of the Angus sire. He has the markings of a herd bull and we strongly considered him for the sale. He does everything well with a moderate birth weight of 88 pounds and all of his scores well over 100. He has a big, attractive daughter of Hyline Right Time 538. As you can see in the picture, he has great eye appeal.



IMR 9038W ADVANCE 1033Y — 43184266

Sire: IMR 9038W ADVANCE 1036Y • MGS: CL 1 DOMINO 200M
 BW 3.4; WW 50; YW 80; MM 20; M&G 54; FAT -0.008; REA 0.62; MARB -0.14

• This may be the best cow on the ranch and we are offering her to lead the cows in this sale. She has weaned two calves with an average ratio of 110. She has tremendous femininity with a long clean neck. I scored her ideal udder a 9 and 8 last fall. The entire group of fall calving cows are top-notch with several donor candidates.



Lee and Jacqui Haygood
 923 Hillside Ave., Canadian, TX 79014
 806-323-8232 • Cell 806-323-2906
 lee@indianmoundranch.com

Call or e-mail for a catalog or find more
 sale information at
www.indianmoundranch.com.

Round-Up for Rehab Kicks Off

Four-year-old Cameron is too busy swimming and playing trucks to notice that hundreds of ranchers are equally busy. Their goal: Rounding up livestock and cash donations this fall so West Texas Rehabilitation Center can continue to help him and other children and adults overcome disabling effects of illness and injury.

Since 1960, when it began in Abilene, the Round-Up for Rehab has provided an avenue through which friends in agriculture lend their brand of support to help the Rehab Center provide outpatient services daily to 500 children and adults with disabilities – regardless of their financial circumstance.

Ranchers and businesses may participate in the Round-Up by donating stock to be sold at special sales, making a cash donation or donating later in the year when they take stock to market.

More than 150 volunteers, including Honorary Chairman Red Steagall and General Chairmen Mike Alexander and Randy Carson of Abilene and Jody Frey and Bob Helmers of San Angelo, are assisting Round-Up by promoting activities and asking neighbors to join them in donating however they can to the fall drive.

Big-hearted producers and stockfarmers always have come through for the Rehab, even in the toughest years – and Texas' historic drought last year exemplified that.

"In spite of our own tough times, we want to do what we can to help Rehab help those facing struggles for independence every day," says Helmers. "West Texas Rehab is very blessed with longtime supporters, and the management and staff have never taken our loyalty or generosity for granted."

Additionally, up-front corporate support includes commitments from B-4 Farms, Bar-G Feedyard, Basic Energy, Group IV Electric Cooperatives, Hargrove Ranch Insurance/Fisher-Jones Title Co., H-E-B Food Stores, Lone Star Beef Processors and Stamford Insurance/America First Insurance.

"Early support of volunteers and business friends will help our funding drive begin on a positive note," adds WTRC President Woody Gilliland. "All of these special friends illustrate the dedication and effort that have sustained Rehab for 59 years, and they're the reason this organization can look to the future with confidence and pride."

For more information or to make a donation, contact WTRC-Abilene at 325-793-3507 or WTRC-San Angelo at 325-223-6311. ★

Round 'em Up for Rehab!

DONATE CATTLE, SHEEP, GOATS, HORSES OR CASH TO BE INCLUDED IN ONE OF THE FOLLOWING SPECIAL SALES:



FALL 2012 SALE SCHEDULE

Sept. 18.....	Abilene Auction	1:00 pm
Sept. 20.....	Producers Auction, San Angelo	1:00 pm
Sept. 25.....	Stephenville Auction.....	6:30 pm
Sept. 26.....	Stephenville Auction.....	12 noon
Oct. 15.....	Junction Methodist Hall.....	11:30 am
Oct. 17.....	Coleman Auction.....	11:00 am
Oct. 23.....	Sweetwater (Nolan Co. Annex).....	6:00 pm
Oct. 24.....	Sweetwater Auction	12 noon

—“Partners” Providing Underwriting—





















FOR MORE INFORMATION OR TO ARRANGE FOR ANIMALS TO BE PICKED UP, CALL 325-793-3507





Tow-headed Cameron brightens West Texas Rehab Center's hallways weekly as staff therapists work to help him reach developmental milestones. Each week he receives physical and occupational therapy as well as speech services to overcome effects of his premature birth and seizure disorder.

Cameron's story is one of many made possible by a loving family, conscientious staff, state-of-the-art facilities and generous supporters in the ranching and farming industry.

Since 1953, the Rehab Center's mission has been to improve the quality of life for every child and adult with disabilities who seeks its services. And since 1960 the

Round-Up for Rehab, as much a part of fall as autumn leaves, has been instrumental in making that mission possible.

A private, nonprofit organization, WTRC provides patient services such as physical therapy, occupational therapy, speech therapy, hearing and balance, orthotics and prosthetics, industrial rehab, pool therapy, diagnostic services, family support services and Hospice of the Big Country. WTRC facilities are located in Abilene, San Angelo and Ozona, and more information about services is available at www.WestTexasRehab.org or by calling 325-793-3400.

Replacement Female Sale – Cowtown Select Entries

Now is the time to make your selections for both the 44th Annual Whiteface Replacement Female Sale and Cowtown Select Sale. Although entries are not due until fall, bred heifers need to be put with bulls at this time. Select sale consignments should be identified and nominated early as only a limited number of cattle will be accepted. Note that the sale dates are Sunday February 3, 2013. ★

AHA Annual Meeting

The 2012 American Hereford Association (AHA) Annual Membership Meeting will be Saturday, Nov. 3. The weekend schedule will follow the same format as 2011 with an educational forum on Friday, Annual Meeting and sale on Saturday, and the American Royal National Hereford Show on Sunday.

The AHA headquarters hotel will be the Argosy Casino Hotel and Spa. To make reservations, call 1-800-270-7711. Ask for the AHA \$99 rate. Cutoff for reservations is Oct. 16.

Restaurants at the Argosy will feature Certified Hereford Beef (CHB) during the annual meeting weekend. Be sure to enjoy a delicious CHB steak while you are in the Kansas City area. ★

Show Entry Deadlines Approaching

North American International Livestock Exposition, Louisville

Entry deadline: Oct. 1

Show date: Nov. 15
livestockexpo.com

Western Nugget, Reno

Entry deadline: Oct. 30

Show dates: Dec. 7-8
nuggethereford.com

National Western Stock Show, Denver

Entry deadline: Nov. 21

Show dates: Jan. 17-19, 2013
nationalwestern.com

Southwestern Exposition National, Fort Worth

Entry deadline: Nov. 15

Show date: Feb. 4, 2013
fwstockshowrodeo.com

Bernice G. Moore

Bernice G. Moore passed away Saturday, August 25, 2012 in Austin, Texas.

Bernice was born to Michael and Mary (Tarra) Bogden at Great Falls, Missouri. She attended Hardin Simmons University. Bernice married Fred B. Moore February 16, 1944 at Billings, Montana. She was the owner and CEO of Pied Piper Mills and Moore Elevator for forty-four years. Bernice was a member of the First Baptist Church. She enjoyed ballroom dancing, gardening, playing bridge and working hard. She is preceded in death by her husband (1964), daughter (Jeanette Moore), and son (Barry Moore).

Bernice is survived by two sons and daughters-in-law, Robert and Marcia Moore and David and Julie Moore all of Hamlin; one daughter and son-in-law, Patrice and Dwight Griggs of Austin; ten grandchildren, Hayley Richey, Fred Barry Moore, Lauren Caldwell, Miranda Moore, Meredith Moore, Courtney Bell, Derek Moore, Damon Moore, Jon David Moore and Emilee Moore; twelve great-grandchildren; a sister, Stella Dupuis; a daughter-in-law, Carol Ratliff; and a special caregiver, Tomaleata Brown. ★

David Stuart Gibbs

David Stuart Gibbs, 73, passed away August 31, 2012, after a brief illness.

David was born Oct. 8, 1938, in Fort Worth and chosen by Frank Bo Gibbs and Esther Camp Gibbs, to be their only son. David graduated from North Side High School in 1957. Through a program in high school he volunteered to be an usher at Will Rogers Coliseum during the rodeo. Thus began a longtime career and passion for livestock and youth exhibitors. David worked in the arena director's office and commercial exhibits at the Stock Show. He became the livestock show manager at the Fort Worth Stock Show and Rodeo in 1977, retiring in 2004 and continuing as a consultant until April of this year.

David was a proud member of

the Corps of Cadets at Texas A&M College, where he graduated in 1962. As a loyal and enthusiastic Aggie, his blood was maroon through and through. Whoop!!

Survivors include wife, Becky; daughter, Misti Owens and husband, Frank, of Sugarland; stepson, Todd McMahon; and step grandchildren, Kristin (Wes) Owens, Krysteena (Eric) Segovis and Colby Blankenship; sisters-in-law, Sherry (Bob) Ferguson and Debbie Isaacs; and several nieces and nephews. David had many friends throughout Fort Worth and the state of Texas. ★

Jacque Allen

Jacque Allen, longtime Young County rancher and homemaker passed away Thursday, August 9, 2012. She was born November 14, 1929, to Tom and Mary Burns Donnell and was raised in Eliasville. She graduated from Breckenridge High School and attended what is now Texas Tech University, where she was proud of being the third female to graduate from the School of Agriculture with a degree in Animal Husbandry. She met her husband, Nathan, while at Tech and they were married in Eliasville in 1953. After a brief stint in Fort Worth and Graham, they began their ranching career in north eastern New Mexico.

When her son was in 4-H, she was active as an adult leader and for many years helped with the sale committee of the Young County Junior Livestock Show. She also previously served on the board of the North Texas Rehab Center in Wichita Falls and helped organize the Texas Hereford Auxiliary. She was a member of First Presbyterian Church in Graham, where she served on the building committee that was responsible for the present church.

She is survived by her husband, Nathan Allen, and one son, Jeff, and his wife, Ellen, of Graham. Three grandchildren, Thomas and his wife, Tara, of Houston, Travis and his wife, Sydne, of Greenwood, Miss., and Emily Allen of Dallas also survive. ★

COLYER HEREFORDS

11TH ANNUAL INTERNET HEIFER SALE
+ MATURE COWHERD DISPERSION

LiveAuctions.TV

Featuring All Cows
Born 2006 and Earlier.
Numerous Donor
Quality Females.

October 6, 2012

Bruneau, Idaho
1 PM (MST)

First Time Opportunity
To Select Cows
From the Heart of
the Colyer Program



Lot 1 • C 88X Ribeye Lady 2067 ET

Reg. 43270634 • DOB: 1/7/12

Sire: NJW 98S R117 RIBEYE 88X ET
Dam: C NOTICE ME ET

BW 2.1; WW 43; YW 68; MM 30; M&G 52
Fat -.016; REA .41; Marb .10



Lot 3 • C Notice Me Untapped 2200 ET

Reg. 43298467 • DOB: 2/3/12

Sire: TH 89T 743 UNTAPPED 425X ET
Dam: C NOTICE ME ET

BW 3.8; WW 46; YW 68; MM 24; M&G 46
Fat -.046; REA .68; Marb .03



Lot 9 • C R111 MS Hereford 2088 ET

Reg. 43270653 • DOB: 1/10/12

Sire: TH 71U 719T MR HEREFORD 11X
Dam: -S LADY ADVANCE 176L R111 ET

BW 3.1; WW 55; YW 83; MM 22; M&G 49
Fat -.021; REA .54; Marb .00



Lot 17 • Pick of the Bull Calves

Pick of the entire 2012 bull calf crop. The herd that has exhibited 10 Grand Champion Bulls and 7 Reserve Grand Champion bulls in Denver, 3 Denver Grand Champion Carloads and 2 Reserve Champion loads, 4 Grand Champion Pens of 3 including back to back in 2011 and 2012.



Lot 19 • C Ms Pure Gold 6169 ET

Reg. 42701673 • DOB: 1/5/06

Sire: C -S PURE GOLD 98170
Dam: C 492D MS ADV 96007

BW 4.0; WW 50; YW 77; MM 26; M&G 51
Fat -.022; REA .66; Marb -.11

Full sister to Game Plan, Game Day
and She's Got Game.



Lot 25 • C 212 Ms Dom 5027 ET

Reg. 42575665 • DOB: 1/5/05

Sire: CL 1 DOMINO 212M
Dam: C PURE GOLD 1027

BW 0.1; WW 42; YW 63; MM 24; M&G 45
Fat .004; REA .23; Marb -.03

Dam of Chandler & Earthquake.

Colyer

HEREFORDS
ANGUS

www.hereford.com

Guy, Sherry and Katie Colyer:
(208) 845-2313 • Cell: (208) 599-0340
Kyle and Bobby Jean Colyer:
(208) 845-2098 • Cell: (208) 250-3924
Ray and Bonnie Colyer (208) 845-2312
Fax: (208) 845-2314
Email: guy@hereford.com



CL 1 Domino 105Y

The \$160,000 bull which topped the Cooper Sale this spring is the service sire for Lots 19, 20, 35, 39, 53, 54, 61, 63, 64 and 71.

September marks the end of another hot and dry Texas summer and brings hope for a successful fall sale season. This issue includes ads for most of our fall sales. These sales and the many private treaty cattle available and listed on our "Cattle for Sale" page are a tribute to the breeders and their cattle who have weathered the harsh summer heat and drought to keep these genetics available for breeding stock. Please avail yourself

to the opportunities to upgrade your breeding programs. Our Hereford breed offers many traits needed to be successful and profitable in these new and trying times.

The heat and lack of rain continues to take its toll on many of our breeders, not to mention another year of horrible wildfires. Many of our members have rode out the summer and all of these problems but are now facing unprecedented decisions as to

how to manage thru the winter and next spring with water, grass and hay in short supply. A lot of good cattle have and will continue to be sold for our ranchers to survive. We send our heartfelt sympathy to those who have suffered losses and hope that Mother Nature will send relief soon.

I congratulate all of our Texas juniors for their participation and winnings at JNHE. You make us proud.

THA will again co-sponsor a fall consignment sale in partnership with the Buffalo Livestock Auction as advertised elsewhere in this issue. We appreciate the interest and consignments from our members in this venture as well as the cooperation from the owners of Buffalo Livestock. This year a screening committee inspected most of the bulls and those selected should make a powerful offering. We hope to see many of you at this sale on October 24.

Entries are now due for both the 44th annual Whiteface replacement female sale and the Cowtown select sale. Hereford cattle will again be stalled in of the Moncrief building (Barn 5 to some). We plan to limit the consignments in the Cowtown Select Sale and plan to have a better display of sale cattle during the show. We hope to expand our advertising and are working on involving some sponsors to offset the costs.

The executive committee voted recently to discontinue the sale we have been sponsoring at Morgan. However, we do plan to keep sponsoring an annual futurity heifer sale on April 27, 2013 and need consignments. We must have at least 20 lots committed by February 1, 2013. John Mehaffey will again be chairman of this event and solicits your thoughts, ideas, help and consignments. A successful sale is a reflection for everyone involved in the Texas Hereford industry.

In conclusion, I wish to inform everyone that two of our members have been nominated to run for a position on the American Hereford Board of Directors. Jay Wright, current president of THA and Curtis Curry, current president of Oklahoma Hereford Association are two of the six nominees. I encourage all our members to support these two nominees and encourage any of the voting delegates to vote for these representatives from the southwest region. ★

McMullin Ranch

**When bulls like this HEREFORD
are crossed on black cows...**



**...the results are great
heifers like these!**



SEE US FOR YOUR HEREFORD BULLS!



McMullin Ranch

Donlie and Linda McMullin
1005 Perryman Creek Rd.
Copperas Cove, TX 76522

254-547-0172 • dboydmc@yahoo.com

Make Fort Worth a "Must Do" event in 2013

44th Annual Premium Whiteface Replacement Female Show and Sale Sunday, February 3, 2013

Our 44th Annual sale will be a great event. The demand for Hereford females is at an all-time high and this should be the source for some of the best Hereford genetics offered in the State of Texas.

Make "Super Hereford Weekend" an educational and entertaining event by attending the Annual Meeting and social of Texas Hereford Association, & the National Hereford Show.

Special Rules:

1. All consignors must be active or associate members of the Texas Hereford Association.
2. Animals must be in their pens not later than 6:00 p.m. Friday, February 1, 2013.
3. All animals will be shown in pens of ten

(10) by classes and placed by judges at 9:00 a.m., Saturday, February 2, 2013.

4. All females entered will be sold in the Hereford Sale at 1:00 p.m., Sunday, February 3, 2013.
5. Pen and Sale Fees: an entry fee of \$10.00/head is due on November 1, 2012. A seven (7) percent sale fee will be assessed at the sale. This fee includes all Stock Show pen fees and sale costs. No refunds after entries close.
6. Health requirements: all females entered in this division must meet regulations of the Texas Animal Health Commission and must be accompanied by an official health certificate.
7. Registered heifers are eligible. Minimal grooming is encouraged.



**Hereford Weekend
Southwestern
Exposition and
Livestock Show
Feb. 2-4, 2013**

**Send us your best
Hereford heifers...**

Call for entries.

Deadline for entries – November 1, 2012.

2013 Premium Whiteface Replacement Female Show & Sale

Hereford Division

- Class 1** _____ Heifers calved after Sept. 1, 2011
- Class 2** _____ Heifers calved from 1-1-11 to 8-31-11, Bred, No Calves
- Class 3** _____ Heifers calved 1-1-10 to 12-31-10, Bred, No Calves
- Class 4** _____ Heifers calved 1-1-10 to 8-31-11, Any Or All With A Calf At Side

Black White-faced English Cross Division

- Class 7** _____
- Class 8** _____
- Class 9** _____
- Class 10** _____

Name _____ Social Security # or Ranch EIN _____

Address _____

Entry Fee (\$10.00/head) _____ Age of Heifers (month calved) _____

Bred or Open _____ If bred, when & to what breed _____

Calfhood Bangs Vacc.? (yes or no) _____ Other Information _____



February 3, 2013 – Fort Worth, Texas

NAME: _____

ADDRESS: _____

CITY, STATE, ZIP: _____

PHONE: _____

We will consign the following cattle to the "Fort Worth National Cowtown Select Hereford Sale"

_____ BRED HEIFERS _____ OPEN HEIFERS _____ COW/CALF PAIRS

_____ BULLS _____ EMBRYOS _____ FLUSHES

- Nominations and entry fee of **\$250 due October 1, 2012.**
Footnotes, original registration papers and pictures must be at THA by **November 15, 2012.**
- **All** cattle must be entered in the Fort Worth Stock Show **by November 15, 2012.**
- Cattle must be halter broke, as they will be tied in the show barn at the stock show.
- Cattle must be properly conditioned, fitted and clipped for the sale.
- Selection committee will contact you to view your cattle prior to cataloging.
- Sale expense will include 3% commission plus actual sale expense divided by sale lots.
- Sale committee reserves right to screen cattle on arrival at sale.
- All bulls must be tested for Trichomoniasis, regardless of age.
- All animals must be free of genetic abnormalities and guaranteed to be breeders.

RETURN ENTRIES TO:
Texas Hereford Association
4609 Airport Freeway • Fort Worth, Texas 76117
817/831-3161 • 817/831-3162 (fax)
email: texashereford@sbcglobal.net
www.texashereford.org

TEXAS HEREFORD Fall Classic SALE

OCT. 24, 2012
BUFFALO, TX

Wednesday ★ 12:00 Noon
Buffalo Livestock Marketing, Inc ★ 903-322-4940
Auctioneer: Leo Casas, III • Sale broadcast on DV Auction

SELLING



60 Service-Age Hereford Bulls

100
Replacement Females

*Bred and Open – including registered Herefords,
commercial Herefords, Hereford x Brahman crosses
Angus and Brangus*

For more information contact:
Jack Chastain ★ 817-821-3544 • Ty deCordova ★ 903-390-6183
Texas Hereford Association
www.texashereford.org • texashereford@sbcglobal.net

CONSIGNORS • CONSIGNORS • CONSIGNORS

Atlas Farms, Grandview	1	Pullen Herefords, Rockwall	25-26
B & C Cattle Co., Miami	2-5	Rafter J Cattle Co., Abilene	27-29
Cutting Edge Cattle Co., Grandview	6-8	S-W Herefords, North Richland Hills	30
Fuston-Mehaffey Herefords, Turkey	9-14	R. Schlegel & Sons, Olney	31
McInnis Cattle Co., May	15-18	Summerour Ranch, Dalhart	32-49
Mimms Herefords, Lorenzo	19-22	W4 Ranch, Morgan	50-54
Mockingbird Hill Herefords, Mineral Wells	23-24	Curtis Younts & Son, Belton	55-56

Corporate Sponsors
Ezy-Lift
Gorman Milling Co., Inc.
Midcontinent Livestock Supplements
Silveus Insurance Group

TERMS AND CONDITIONS

1. Terms, cash or check, unless otherwise arranged before sale.
2. The auctioneer will settle any dispute as to bids by declaring all bids off and reselling the animal in question.
3. Each animal will be at the purchaser's risk as soon as sold, but will not be delivered until settlement has been made for same.
4. After sold, the animals will be cared for until they are loaded out at the purchaser's risk of loss or injury. (For period not to exceed 24 hours.)
5. Every breeder consigning cattle to this sale guarantees every animal he sells to be a breeder for a period of no longer than six months from this sale date. Bulls over 12 months of age will be fertility tested. Bred heifers and cows will be checked by veterinarian.
6. All necessary tests for disease (including TB) have been made and the animals are eligible to be shipped anywhere.
7. Prospective buyers who cannot be present at the sale may send their bids to either the auctioneer or any accredited representative.
8. The Texas Hereford Association acts as agent only in the sale. Any guarantee is between consignor and buyer.
9. Cattle insurance is available to the buyer.

ALL PERSONS WHO ATTEND THE SALE DO SO AT THEIR OWN RISK.
THE TEXAS HEREFORD ASSOCIATION AND BUFFALO LIVESTOCK MARKETING, INC.
ASSUME NO LIABILITY, LEGAL OR OTHERWISE, FOR ANY ACCIDENTS.

SALE HEADQUARTERS
HAMPTON INN, BUFFALO
903-322-2223
2624 West Commerce Street
Buffalo, TX 75831

AUCTIONEER: LEO CASAS, III

SALE SPONSORED BY

Texas Hereford Association ★ 817-831-3161
Jack Chastain ★ Cell 817-821-3544
4609 Airport Freeway ★ Fort Worth, Texas 76117
texashereford@sbcglobal.net ★ www.texashereford.org

Buffalo Livestock Marketing, Inc.
Ty deCordova ★ Cell: 903-390-6183
Sale Barn 903-322-4940

1

ATLAS MR 75P TANK 9Y

Calved 01/17/11 • #P43233853 • Tattoo: 9Y

NJW FHF 9710 TANK 45P [CHB,DLF,HYF,IEF]
 KJ BJ 204 FULL TANK 826U ET
 CRR D03 KAY-BABY 204
 JSF 23 NIBBS 60G
 ATLAS LDY 717 NIBBS 75P
 GBR L1 MS 3002 717

BW +3.9 / WW +43 / YW +70 / MM +22 / M&G +43 / CEM +0.6 / REA +0.29 / IMF +0.03
Consigned by ATLAS FARMS, GRANDVIEW

5

B&C L1 DOM 0250

Calved 10/15/10 • #43169129 • Tattoo: 0250

REMITALL ONLINE 122L [SOD,CHB,DLF,HYF,IEF]
 B&C OUTLOOK EXPRESS 25085 [DLF,IEF]
 B&C MS MARK DONALD 20070 [DLF,IEF]
 BR 20X FELTON 2020 ET
 B&C MS INTERNET EXPLORER 25155
 B&C MISS L1 DOMINO 21024

BW +5.8 / WW +52 / YW +90 / MM +17 / M&G +43 / CEM +3.2 / REA +0.27 / IMF +0.05
Consigned by B&C CATTLE CO., MIAMI

2

B&C L1 DOM 0222

Calved 07/10/10 • #43169124 • Tattoo: 0222

KJ BJ BOUNTY HUNTER 741P [DLF,IEF]
 B&C BOUNTY HUNTER 26078
 B&C MS MARK DONALD 20070 [DLF,IEF]
 B&C MARK DON 8504 1ET
 B&C MS MARK DONALD 20073
 B&C L1 MARKETTE 7521

BW +4.3 / WW +44 / YW +73 / MM +15 / M&G +37 / CEM +0.8 / REA +0.47 / IMF -0.06
Consigned by B&C CATTLE CO., MIAMI



3

B&C L1 DOM 0167

Calved 08/09/10 • #43168844 • Tattoo: 0167

KJ BJ BOUNTY HUNTER 741P [DLF,IEF]
 B&C BOUNTY HUNTER 26078
 B&C MS MARK DONALD 20070 [DLF,IEF]
 B&C MARK DONALD 20024
 B&C MARK DONALD 24162
 MS MARK DON 8501 1ET

BW +4.0 / WW +42 / YW +68 / MM +19 / M&G +40 / CEM +0.5 / REA +0.45 / IMF -0.07
Consigned by B&C CATTLE CO., MIAMI

6

CEC F&F POKERFACE 0011 [DLF,HYF,IEF]

Calved 03/02/11 • #43238045 • Tattoo: 0011

BR MOLER ET [CHB,DLF,IEF]
 C RENO 6142 ET [CHB,DLF,IEF]
 C NOTICE ME ET
 K&B STARFIRE 8415
 F&F MISS STARFIRE 405
 F&F MS SUMMIT 908

“Pokerface” is a powerful son of Reno, one of the featured herd sires at Colyer’s. Heavy structured and sound as a cat he will make a great herd sire addition for any program.

BW +5.0 / WW +51 / YW +78 / MM +17 / M&G +43 / CEM +1.1 / REA +0.35 / IMF +0.06
Consigned by CUTTING EDGE CATTLE CO., GRANDVIEW

4

B&C L1 DOM 0166

Calved 09/06/10 • #43168843 • Tattoo: 0166

KJ BJ BOUNTY HUNTER 741P [DLF,IEF]
 B&C BOUNTY HUNTER 26078
 B&C MS MARK DONALD 20070 [DLF,IEF]
 MARK DOMINO 7558 1ET
 B&C MARK DOMINET 21211
 B&C L1 DOMINET 6691

BW +3.9 / WW +46 / YW +72 / MM +17 / M&G +40 / CEM +0.5 / REA +0.45 / IMF -0.08
Consigned by B&C CATTLE CO., MIAMI

7

CEC MRP T-15 GINO 0211

Calved 04/04/11 • #43238046 • Tattoo: 0211

GO EXCEL L18 [SOD,CHB,DLF,HYF,IEF]
 GO THE NATURAL T15 [DLF,HYF,IEF]
 GO MS 3196 ADVANCE R16 [DLF,IEC]
 UPS TCC NITRO 1ET [CHB,DLF,HYF,IEF]
 C GOT GAME NITRO 9182 ET
 C SHE’S GOT GAME ET

BW +3.2 / WW +51 / YW +88 / MM +25 / M&G +51 / CEM +1.3 / REA +0.47 / IMF -0.01
Consigned by CUTTING EDGE CATTLE CO., GRANDVIEW

8

CEC F&F READY OR NOT 0911

Calved 06/03/11 • #43238053 • Tattoo: 0911

TJ GUNSMOKE 7002 ET
 UPS ODYSSEY 1ET [CHB,DLF,HYF,IEF]
 KT MS 122L ONLINE 3105
 BR LANSING 3056
 BR 56 ROSEMARY 5126
 BR 74 RACHEL 3143

BW +4.8 / WW +49 / YW +76 / MM +22 / M&G +46 / CEM +1.6 / REA +0.36 / IMF +0.09
 Consigned by **CUTTING EDGE CATTLE CO., GRANDVIEW**



10

F&F PATRON 045

Calved 11/02/10 • #43310149 • Tattoo: 045

BR DM PATRON 5005 ET [DLF,IEF]
 BR DM CHANNING ET [CHB,DLF,IEF]
 BR L1 DOMINETTE 5078
 BR DM 15 KEY 1167
 F&F JDM WINNIE 8104
 F&F MISS STARFIRE 332

BW +4.0 / WW +43 / YW +73 / MM +16 / M&G +38 / CEM +1.4 / REA +0.36 / IMF -0.07
 Consigned by **FUSTON-MEHAFFEY HEREFORDS, TURKEY**



9

F&F PATRON 035

Calved 08/30/10 • #P43310148 • Tattoo: 035

BR DM PATRON 5005 ET [DLF,IEF]
 BR DM CHANNING ET [CHB,DLF,IEF]
 BR L1 DOMINETTE 5078
 BR DM CHANNING ET [CHB,DLF,IEF]
 F&F MS LUPE 711 ET
 FCC MISS PAULA 145

BW +4.1 / WW +46 / YW +78 / MM +13 / M&G +36 / CEM +3.0 / REA +0.45 / IMF -0.03
 Consigned by **FUSTON-MEHAFFEY HEREFORDS, TURKEY**



11

F&F GUNSMOKE 106

Calved 02/07/11 • #43312306 • Tattoo: 106

TJ GUNSMOKE 7002 ET
 UPS ODYSSEY 1ET [CHB,DLF,HYF,IEF]
 KT MS 122L ONLINE 3105
 F&F STARFIRE 220
 F&F 220 MS SUMMIT 7125
 BR DOMINETTE 9180

BW +5.5 / WW +52 / YW +91 / MM +22 / M&G +47 / REA +0.39 / IMF +0.11
 Consigned by **FUSTON-MEHAFFEY HEREFORDS, TURKEY**



10

12

12

F&F PATRON 110

Calved 02/28/11 • #43310150 • Tattoo: 110

BR DM CHANNING ET [CHB,DLF,IEF]
 BR DM PATRON 5005 ET [DLF,IEF]
 BR L1 DOMINETTE 5078
 BR 15 VALIANT 0105
 F&F MS VALIANT 660
 SR MS MARK 3178

BW +3.9 / WW +37 / YW +64 / MM +16 / M&G +34 / CEM +1.1 / REA +0.29 / IMF -0.05
 Consigned by **FUSTON-MEHAFHEY HEREFORDS, TURKEY**



13

CEC F&F 98170 GOLD DIGGER 0311

Calved 03/10/11 • #43265015 • Tattoo: 0311

C GOLD RUSH 1ET
 C -S PURE GOLD 98170 [SOD,CHB,DLF,IEF]
 C MS DOM 93218 1ET
 NJW 120J BOULDER 28P ET
 NJW 28P 119M ANN 9S
 NJW 1K ANN 119M

BW +4.1 / WW +48 / YW +78 / MM +23 / M&G +47 / CEM -0.4 / REA +0.68 / IMF -0.13
 Consigned by **FUSTON-MEHAFHEY HEREFORDS, TURKEY**

14

CEC F&F OFF THE RECORD 0811

Calved 04/28/11 • #P43238052 • Tattoo: 0811

UPS ODYSSEY 1ET [CHB,DLF,HYF,IEF]
 TJ GUNSMOKE 7002 ET
 KT MS 122L ONLINE 3105
 F&F STAR MARK 800 [DLF,IEF]
 F&F MS STAR MARK 518
 FCC MISS PAULA 145

BW +4.6 / WW +44 / YW +80 / MM +18 / M&G +40 / CEM +2.0 / REA +0.30 / IMF +0.14
 Consigned by **FUSTON-MEHAFHEY HEREFORDS, TURKEY**

15

MCC 405 PURE GOLD 447 X533

Calved 12/01/10 • #43168517 • Tattoo: X533

C -S PURE GOLD 98170 [SOD,CHB,DLF,IEF]
 MCC PURE GOLD R447 ET
 MCC LADY DOMINO C342
 LLL NUFF SAID 45H [SOD,DLF,IEF]
 MCC MS NUFF SAID C405 ET
 BR L1 DOMINETTE 5078

BW +4.8 / WW +43 / YW +69 / MM +22 / M&G +43 / CEM -1.3 / REA +0.43 / IMF -0.16
 Consigned by **McINNIS CATTLE CO., MAY**

16

M6 RENO ARIEL 134 ET

Calved 01/20/11 • #43186626 • Tattoo: 134

BR MOLER ET [CHB,DLF,IEF]
 C RENO 6142 ET [CHB,DLF,IEF]
 C NOTICE ME ET
 KCF BENNETT 3008 M326 [SOD,CHB,DLF,HYF,IEF]
 M6 MS M326 ARIEL 8171 ET [DLF,HYF,IEF]
 DM BR ARIEL 4130 ET

BW +4.4 / WW +56 / YW +86 / MM +23 / M&G +51 / CEM +5.2 / REA +0.50 / IMF +0.14
 Consigned by **McINNIS CATTLE CO., MAY**

17

M6 RENO VIC 163

Calved 02/15/11 • #43186627 • Tattoo: 163

BR MOLER ET [CHB,DLF,IEF]
 C RENO 6142 ET [CHB,DLF,IEF]
 C NOTICE ME ET
 HH ADVANCE 255M 1ET [CHB,DLF,IEC]
 M6 MS 255M FELT VIC 841 P ET [DLF,HYF,IEF]
 KCF MISS 774 H291

BW +3.6 / WW +52 / YW +84 / MM +19 / M&G +45 / CEM +3.6 / REA +0.31 / IMF +0.28
 Consigned by **McINNIS CATTLE CO., MAY**

18

MCC 143U MAXIUM Y552

Calved 03/02/11 • #43236682 • Tattoo: Y552

EAGLE-RIDGE BLASTER ET 4J
 GOLDEN-OAK 4J MAXIUM 28M [CHB,DLF,HYF,IEF]
 TA-BAR CHANTELE 15K
 CL 1 DOMINO 9126J 1ET [SOD,CHB,DLF,IEF]
 NJW 712B 9126J SERENADE 143UET [DLF,HYF,IEF]
 KLONDIKE ALPHA 712B

BW +3.5 / WW +40 / YW +71 / MM +23 / M&G +43 / CEM +2.5 / REA +0.38 / IMF -0.04
 Consigned by **McINNIS CATTLE CO., MAY**

19

MM ABOUT TIME 1100 ET

Calved 04/15/11 • #P43228445 • Tattoo: 1100

THM DURANGO 4037 [CHB,DLF,HYF,IEF]
 CRR ABOUT TIME 743 [CHB,DLF,HYF,IEF]
 CRR D03 CASSIE 206
 BR DM CHANNING ET [CHB,DLF,IEF]
 H PAULA 625 ET [DLF,IEF]
 C MS PURE GOLD 2003

BW +3.2 / WW +52 / YW +84 / MM +22 / M&G +48 / CEM +1.9 / REA +0.60 / IMF +0.14

Consigned by MIMMS HEREFORDS, LORENZO



20

MM WALLACE 1104 ET

Calved 04/15/10 • #P43309964 • Tattoo: 1104

BR MOLER ET [CHB,DLF,IEF]
 BR DM CSF WALLACE ET [CHB,DLF,HYF,IEF]
 RB L1 DOMINETTE 8063 [DLF,HYF,IEC]
 BR WILDFIRE 2153 [DLF,HYF,IEC]
 H LADY WILDFIRE 6153 [DLF,HYF,IEF]
 H DOMINETTE 4067

BW +3.8 / WW +53 / YW +78 / MM +13 / M&G +40 / CEM +2.2 / REA +0.55 / IMF -0.08

Consigned by MIMMS HEREFORDS, LORENZO

23

MH OAKS EASY DEAL 0098 ET

Calved 10/15/10 • #43309534 • Tattoo: 0098

BR DM CHANNING ET [CHB,DLF,IEF]
 H EASY DEAL 609 ET [CHB,DLF,HYF,IEF]
 C MS PURE GOLD 2003
 MH PATRIOT 3159 [SOD]
 LC MARY KATE C211
 BR L1 DOMINETTE 8026

BW +4.5 / WW +42 / YW +82 / MM +25 / M&G +46 / CEM -2.1 / REA +0.51 / IMF +0.06

Consigned by MOCKINGBIRD HILL HEREFORDS, MINERAL WELLS

21

MM NITRO 1101 ET

Calved 04/20/11 • #P43228447 • Tattoo: 1101

GH NEON 17N [CHB]
 UPS TCC NITRO 1ET [CHB,DLF,HYF,IEF]
 LCC TWO TIMIN 438 ET
 DM BR SOONER [CHB,DLF,IEF]
 BR CSF BRIELLE 8052 ET [DLF,HYF,IEF]
 BR GABRIELLE 5082

BW +3.7 / WW +58 / YW +92 / MM +18 / M&G +47 / CEM +4.5 / REA +0.58 / IMF +0.01

Consigned by MIMMS HEREFORDS, LORENZO

24

MH DOUBLE GOLD X69

Calved 12/20/10 • #43212610 • Tattoo: X69

C -S PURE GOLD 98170 [SOD,CHB,DLF,IEF]
 C PURE GOLD 3153 [DLF,IEF]
 C 492D MISS ADV 9006
 CL 1 DOMINO 285M [CHB,SOD,DLF,HYF,IEF]
 JC L1 GOLDEN GIRL 285M 702T ET
 JC L1 GOLDEN GIRL 0408 ET

BW +4.7 / WW +49 / YW +80 / MM +31 / M&G +55 / CEM -1.7 / REA +0.47 / IMF -0.04

Consigned by MOCKINGBIRD HILL HEREFORDS, MINERAL WELLS

22

MM ABOUT TIME 1111

Calved 05/12/11 • #43228453 • Tattoo: 1111

THM DURANGO 4037 [CHB,DLF,HYF,IEF]
 CRR ABOUT TIME 743 [CHB,DLF,HYF,IEF]
 CRR D03 CASSIE 206
 TH JWR SOP 16G 57G TUNDRA 63N [CHB,DLF,HYF,IEF]
 H MIA 9035 ET
 KF MISS GOLD DIGGER 612S [DLF,IEF]

BW +3.3 / WW +55 / YW +83 / MM +23 / M&G +51 / CEM +0.4 / REA +0.52 / IMF +0.12

Consigned by MIMMS HEREFORDS, LORENZO



25

PH PAYLOAD 921X

Calved 09/21/10 • #43313950 • Tattoo: 921X

C-S PURE GOLD 98170 [SOD,CHB,DLF,HYF,IEF]
 H PAYBACK 807 ET [CHB,DLF,HYF,IEF]
 /S LADY PEERLESS 180L
 BR MOLER ET [CHB,DLF,IEF]
 NELL ROSE MCC 06125 ET
 RCR AURUM ERICA 00019

BW +5.4 / WW +57 / YW +90 / MM +24 / M&G +53 / CEM +1.2 / REA +0.77 / IMF -0.18

Consigned by PULLEN HEREFORDS, ROCKWALL

26

PH PAY OFF 314Y

Calved 03/14/11 • #P43313951 • Tattoo: 314Y

C-S PURE GOLD 98170 [SOD,CHB,DLF,HYF,IEF]
 H PAYBACK 807 ET [CHB,DLF,HYF,IEF]
 /S LADY PEERLESS 180L
 SB 122L PRIDE LINE 32N ET
 SB 32N MAIDEN 27R ET
 STAR MAIDEN LT 354G

BW +5.0 / WW +53 / YW +83 / MM +24 / M&G +50 / CEM +1.9 / REA +0.54 / IMF -0.21

Consigned by PULLEN HEREFORDS, ROCKWALL

27

STAR HOT TO TROT 139X

Calved 01/30/10 • #P43069415 • Tattoo: 139X

C-S PURE GOLD 98170 [SOD,CHB,DLF,HYF,IEF]
 HB STAR BATTLE GROUND 2013 [DLF,HYF,IEF]
 MSU MISS WRANGLER 61J
 MW LLL FARLEY 24F [CHB,SOD,DLF,HYF,IEF]
 STAR HOT SUGAR 182U
 GERBER 434 ELLA 641S

Star Hot To Trot 139X is a super correct bull with great muscle, shape, a big top, and a lot of rib. We bred all of our heifers to 139X last year and we were very pleased with the results. His calves were high quality and we look forward to their production in our herd. He could be used on heifers and grown cows. Not only can 139X increase the performance in your herd but he is capable of producing calves for the show ring.

BW +4.0 / WW +45 / YW +72 / MM +17 / M&G +39 / CEM +1.8 / REA +0.46 / IMF +0.16

Consigned by RAFTER J CATTLE CO., ABILENE

28

RJ PLATINUM 012

Calved 03/14/10 • #P43165209 • Tattoo: 012

REMITALL ONLINE 122L [SOD,CHB,DLF,HYF,IEF]
 STAR NK PLATINUM 508T ET [DLF,HYF,IEF]
 STAR TRF GLITTER 5M [DLF,HYF,IEF]
 BR DM 39 KEY 1147 ET
 MS RW 1147 661
 MS RW L1 DOM 131

RJ Platinum 012 is a bull with a lot of growth and performance. He is a big boned and wide based bull with a lot of top. Like his sire, he is attractive through his front end and is good ribbed. 012 will work on any type of cow. His calves will have power and still maintain maternal quality. You don't want to miss this bull!

BW +4.5 / WW +42 / YW +77 / MM +14 / M&G +35 / CEM +2.8 / REA +0.27 / IMF +0.05

Consigned by RAFTER J CATTLE CO., ABILENE

29

RJ SAM 102

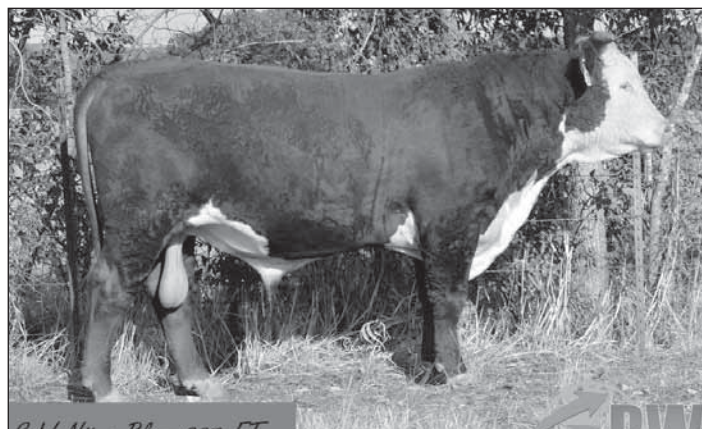
Calved 03/25/11 • #P43237499 • Tattoo: 102

THM DURANGO 4037 [CHB,DLF,HYF,IEF]
 CRR ABOUT TIME 743 [CHB,DLF,HYF,IEF]
 CRR D03 CASSIE 206
 HH ADVANCE 6163S [DLF,HYF,IEF]
 EL MISS ADVANCE 918W
 HH MISS ADVANCE 3172N 1ET

RJ SAM 102 is long made, big footed bull with a lot of rib and muscle shape. He is out of the National champion CRR About Time 743 and a Line One cow with a perfect udder. His sire is considered a calving ease bull and 102 carries on his same qualities. He is a bull that you can use on heifers or grown cows and would be a great addition to any herd.

BW +2.6 / WW +52 / YW +81 / MM +23 / M&G +49 / CEM +1.3 / REA +0.41 / IMF +0.14

Consigned by RAFTER J CATTLE CO., ABILENE



30

S-W NITRO BLAZE 927 ET

Calved 12/15/10 • #43170079 • Tattoo: 927

GH NEON 17N [CHB]
 UPS TCC NITRO 1ET [CHB,DLF,HYF,IEF]
 LCC TWO TIMIN 438 ET
 HH ADVANCE 145L [SOD,CHB,DLF,IEF]
 HH MISS ADVANCE 4098P [DLF,IEF]
 HH MISS ADVANCE 912J

Nitro Blaze is by champion UPS TCC Nitro 1ET, and out of HH Advance 4098. He is a well balanced, powerful, big boned herd bull that moves well and can deliver that extra muscle and mass in future calves. His dam is a Holden 145 daughter, and her backing carries through to his impressive growth and carcass. Dam's EPD's: BW (+5.4), WW (+63), (YW +106), and REA (+.51).

BW +5.1 / WW +61 / YW +106 / MM +16 / M&G +46 / CEM +3.2 / REA +0.59 / IMF +0.02

Consigned by S-W HEREFORDS, NORTH RICHLAND HILLS

31

RSS DER WILDER KATZE 1033

Calved 08/19/10 • #43140610 • Tattoo: 1033

BR MOLER ET [CHB,DLF,IEF]
 KSU WILDCAT 656 ET
 MISS MARK 111 [DOD]
 CL 1 DOMINO 212M [CHB,SOD,DLF,IEF]
 RSS MISS 212M 0743
 RSS 8208 LASS 0376

BW +2.6 / WW +41 / YW +70 / MM +18 / M&G +39 / CEM +3.9 / REA +0.31 / IMF -0.07

Consigned by R SCHLEGEL & SONS, OLNEY



35

SR MISTER MOM 726

Calved 10/21/10 • #43159713 • Tattoo: 726

/S MISTER MOM 7745 [SOD,DLF,IEF]
 CJH MISTER MOM 378
 CJH L1 DOMINETTE 794
 NEBRASKAN 8205 018
 MISS NEB TECH 7
 MISS NUGGET DOM 203

BW +4.7 / WW +37 / YW +62 / MM +15 / M&G +33 / CEM +1.4 / REA +0.04 / IMF -0.03
Consigned by SUMMEROUR RANCH, DALHART

32

SR MISTER MOM 721

Calved 09/09/10 • #43159708 • Tattoo: 721

/S MISTER MOM 7745 [SOD,DLF,IEF]
 CJH MISTER MOM 378
 CJH L1 DOMINETTE 794
 RH MASTERPLAN 908 [SOD]
 MISS MASTER CHARLES 30
 CLASSY LADY 5

BW +5.8 / WW +48 / YW +72 / MM +17 / M&G +41 / CEM +1.1 / REA +0.16 / IMF -0.07
Consigned by SUMMEROUR RANCH, DALHART

36

SR MISTER MOM 729

Calved 02/15/11 • #43199478 • Tattoo: 729

/S MISTER MOM 7745 [SOD,DLF,IEF]
 CJH MISTER MOM 378
 CJH L1 DOMINETTE 794
 SR L1 DOM 575
 MISS SR L1 DOM A9
 MISS CHURCH DOM 19

BW +5.1 / WW +42 / YW +71 / MM +21 / M&G +42 / CEM +1.0 / REA +0.13 / IMF -0.04
Consigned by SUMMEROUR RANCH, DALHART

33

SR MISTER MOM 723

Calved 09/11/10 • #43159710 • Tattoo: 723

/S MISTER MOM 7745 [SOD,DLF,IEF]
 CJH MISTER MOM 378
 CJH L1 DOMINETTE 794
 CHURCH DOM 110
 MISS SR CHURCH DOM 37
 MS MASTER CHARLES 5

BW +7.3 / WW +51 / YW +73 / MM +15 / M&G +41 / CEM +0.7 / REA +0.06 / IMF -0.08
Consigned by SUMMEROUR RANCH, DALHART

37

SR TD ADVANCE 400

Calved 02/17/11 • #43199495 • Tattoo: 400

GO 3196 ADVANCE T9 [DLF,HYF,IEF]
 C&M T9 ADVANCE 9007
 C&M NEW MEXICO LADY 317
 CJH 9005 ADVANCE 414
 SR MISS 9005 ADVANCE C7
 SR MISS CALGARY EX Z9

BW +4.7 / WW +59 / YW +94 / MM +23 / M&G +52 / CEM -0.3 / REA +0.32 / IMF +0.04
Consigned by SUMMEROUR RANCH, DALHART

34

SR MISTER MOM 725

Calved 10/07/10 • #43159712 • Tattoo: 725

/S MISTER MOM 7745 [SOD,DLF,IEF]
 CJH MISTER MOM 378
 CJH L1 DOMINETTE 794
 SR L1 DOM 502
 SR MS DOM ADVANCE X25
 MISS MASTER CHARLES 29

BW +5.4 / WW +46 / YW +78 / MM +20 / M&G +43 / CEM +1.6 / REA +0.02 / IMF -0.05
Consigned by SUMMEROUR RANCH, DALHART

38

SR MISTER MOM 731

Calved 02/20/11 • #43199683 • Tattoo: 731

/S MISTER MOM 7745 [SOD,DLF,IEF]
 CJH MISTER MOM 378
 CJH L1 DOMINETTE 794
 ARS DEL RIO 202
 SR MISS RIO L8
 MISS SR LA DOM 191

BW +5.1 / WW +41 / YW +66 / MM +17 / M&G +38 / CEM +1.7 / REA +0.08 / IMF -0.05
Consigned by SUMMEROUR RANCH, DALHART



42

SR RIO 230

Calved 02/28/11 • #43199510 • Tattoo: 230

GCS SANTANA 905
 ARS DEL RIO 202
 AS HOME GIRL 001
 CJH MISTER MOM 378
 MISS SR MISTER MOM H115
 MISS DOMINO SPEC B19

BW +5.8 / WW +47 / YW +78 / MM +14 / M&G +38 / CEM +1.0 / REA +0.05 / IMF -0.03
Consigned by SUMMEROUR RANCH, DALHART

43

SR MISTER MOM 735

Calved 03/01/11 • #43199688 • Tattoo: 735

/S MISTER MOM 7745 [SOD,DLF,IEF]
 CJH MISTER MOM 378
 CJH L1 DOMINETTE 794
 SR L1 DOM 502
 SR MS DOM ADVANCE X8
 MISS CHURCH DOM 49

BW +5.5 / WW +46 / YW +78 / MM +21 / M&G +44 / CEM +1.4 / REA +0.18 / IMF -0.04
Consigned by SUMMEROUR RANCH, DALHART

39

SR RIO 228

Calved 02/21/11 • #43199511 • Tattoo: 228

GCS SANTANA 905
 ARS DEL RIO 202
 AS HOME GIRL 001
 CJH MISTER MOM 378
 MISS SR MISTER MOM H119
 MISS MASTER CHARLES 24

BW +5.9 / WW +39 / YW +62 / MM +12 / M&G +32 / CEM +0.6 / REA +0.05 / IMF -0.05
Consigned by SUMMEROUR RANCH, DALHART

40

SR TD ADVANCE 401

Calved 02/21/11 • #43199594 • Tattoo: 401

GO 3196 ADVANCE T9 [DLF,HYF,IEF]
 C&M T9 ADVANCE 9007
 C&M NEW MEXICO LADY 317
 LH CALGARY EXTRA 1062
 MISS CALGARY EX Z18
 MISS SR L1 DOM L16

BW +4.2 / WW +57 / YW +91 / MM +24 / M&G +52 / CEM +0.2 / REA +0.36 / IMF +0.03
Consigned by SUMMEROUR RANCH, DALHART

44

SR MISTER MOM 736

Calved 03/13/11 • #43199503 • Tattoo: 736

/S MISTER MOM 7745 [SOD,DLF,IEF]
 CJH MISTER MOM 378
 CJH L1 DOMINETTE 794
 O 582 HOMESSETTER 806
 MISS HOMESSETTER H35 [DOD]
 MS MASTER CHARLES 64

BW +7.8 / WW +61 / YW +93 / MM +21 / M&G +51 / CEM +1.1 / REA +0.26 / IMF -0.06
Consigned by SUMMEROUR RANCH, DALHART

41

SR MISTER MOM 732

Calved 02/21/11 • #43199692 • Tattoo: 732

/S MISTER MOM 7745 [SOD,DLF,IEF]
 CJH MISTER MOM 378
 CJH L1 DOMINETTE 794
 LH CALGARY EXTRA 1062
 MISS CALGARY EX Z8
 LADY BLUE CHIP 25

BW +3.8 / WW +44 / YW +71 / MM +21 / M&G +43 / CEM +1.2 / REA +0.15 / IMF -0.03
Consigned by SUMMEROUR RANCH, DALHART



45

SR MISTER MOM 737

Calved 03/19/11 • #43199687 • Tattoo: 737

/S MISTER MOM 7745 [SOD,DLF,IEF]
 CJH MISTER MOM 378
 CJH L1 DOMINETTE 794
 SR L1 DOM 502
 SR MS DOM ADVANCE X7
 MISS DOMINET 178 [DOD]

BW +5.1 / WW +43 / YW +75 / MM +20 / M&G +42 / CEM +1.3 / REA +0.13 / IMF -0.05
Consigned by SUMMEROUR RANCH, DALHART

49

SR 9005 ADVANCE 516

Calved 04/24/10 • #43105694 • Tattoo: 516

HH ADVANCE 9005J [CHB,DLF,IEF]
 CJH 9005 ADVANCE 414
 CJH L1 DOMINETTE 325
 CJH 9005 ADVANCE 414
 SR MISS 9005 ADVANCE C9
 SR MISS CALGARY EX Z6

BW +3.7 / WW +47 / YW +71 / MM +20 / M&G +44 / CEM +0.1 / REA +0.14 / IMF +0.04
Consigned by SUMMEROUR RANCH, DALHART

46

SR TD ADVANCE 402

Calved 03/21/11 • #43199698 • Tattoo: 402

GO 3196 ADVANCE T9 [DLF,HYF,IEF]
 C&M T9 ADVANCE 9007
 C&M NEW MEXICO LADY 317
 LH CALGARY EXTRA 1062
 MISS CALGARY EX Z23
 STAR DOMILOU 35 [DOD]

BW +4.1 / WW +48 / YW +81 / MM +21 / M&G +45 / CEM -0.8 / REA +0.33 / IMF +0.03
Consigned by SUMMEROUR RANCH, DALHART

50

W4 R612 DOMINO X134

Calved 04/15/10 • #43165813 • Tattoo: X134

CHURCHILL MVP 188 [DLF,HYF,IEF]
 W4 MR MVP R612
 RCR L1 DOMET 99174
 HH ADVANCE 492D [SOD,DLF,IEF]
 W4 492 DOMET N523
 K74 BLAZE DOMET 9058

BW +3.6 / WW +46 / YW +68 / MM +21 / M&G +44 / CEM -0.7 / REA +0.24 / IMF 0.00
Consigned by W4 RANCH, MORGAN

47

SR MISTER MOM 740

Calved 04/03/11 • #43199504 • Tattoo: 740

/S MISTER MOM 7745 [SOD,DLF,IEF]
 CJH MISTER MOM 378
 CJH L1 DOMINETTE 794
 O 582 HOMESSETTER 806
 MISS HOMESSETTER H37 [DOD]
 SR MISS L1 DOM 15

BW +5.3 / WW +49 / YW +77 / MM +24 / M&G +48 / CEM +2.0 / REA +0.18 / IMF -0.03
Consigned by SUMMEROUR RANCH, DALHART

51

W4 6213 DOMINO Y014

Calved 02/01/11 • #43212036 • Tattoo: Y014

BR MOLER ET [CHB,DLF,IEF]
 C MOLER 6213 ET [DLF,HYF,IEF]
 C NOTICE ME NOW ET [DLF,IEF]
 TRM K74 4068 DOM 7051
 LR 4068 CR 5379 ROCKETTE 109
 K74 5376 DOMETE 4156

BW +3.1 / WW +37 / YW +62 / MM +18 / M&G +36 / CEM +2.3 / REA +0.23 / IMF +0.02
Consigned by W4 RANCH, MORGAN

48

SR TD ADVANCE 405

Calved 04/15/11 • #43199493 • Tattoo: 405

GO 3196 ADVANCE T9 [DLF,HYF,IEF]
 C&M T9 ADVANCE 9007
 C&M NEW MEXICO LADY 317
 CJH 9005 ADVANCE 414
 SR MISS 9005 ADVANCE C6
 MISS HOMESSETTER H92

BW +4.6 / WW +55 / YW +91 / MM +17 / M&G +45 / CEM +0.1 / REA +0.25 / IMF +0.03
Consigned by SUMMEROUR RANCH, DALHART

52

W4 6213 DOMINO Y037

Calved 02/03/11 • #43211731 • Tattoo: Y037

BR MOLER ET [CHB,DLF,IEF]
 C MOLER 6213 ET [DLF,HYF,IEF]
 C NOTICE ME NOW ET [DLF,IEF]
 OXH ADVANCE 3265
 B LADY OXLEY 744
 JAB SANDY ANN 1008L

BW +4.0 / WW +48 / YW +78 / MM +23 / M&G +47 / CEM +2.5 / REA +0.35 / IMF -0.02
Consigned by W4 RANCH, MORGAN

53

W4 6213 DOMINO Y039

Calved 02/21/11 • #43211732 • Tattoo: Y039

BR MOLER ET [CHB,DLF,IEF]
 C MOLER 6213 ET [DLF,HYF,IEF]
 C NOTICE ME NOW ET [DLF,IEF]
 OXH ADVANCE 3265
 B LADY OXLEY 750
 B DOMINETTE 4104

BW +3.9 / WW +47 / YW +75 / MM +24 / M&G +48 / CEM +1.9 / REA +0.28 / IMF +0.01

Consigned by W4 RANCH, MORGAN



54

W4 6213 DOMINO Y034

Calved 03/04/11 • #43211728 • Tattoo: Y034

BR MOLER ET [CHB,DLF,IEF]
 C MOLER 6213 ET [DLF,HYF,IEF]
 C NOTICE ME NOW ET [DLF,IEF]
 CHURCHILL RANCHER 592R [CHB,DLF,IEF]
 CHURCHILL LADY 7164T
 CHURCHILL LADY 454P

BW +3.3 / WW +48 / YW +76 / MM +21 / M&G +45 / CEM +3.0 / REA +0.31 / IMF +0.15

Consigned by W4 RANCH, MORGAN

56

F&F ROCKER 123

Calved 04/21/11 • #43312318 • Tattoo: 123

STAR ROCK DOMINO 5N [DLF,IEF]
 C Y STAR ROCK 24
 CY GOLDEN LADY 271
 BR DM 15 KEY 1167
 F&F JDM MS KEY 892
 FCC MS STAR MARK 045

BW +3.1 / WW +37 / YW +59 / MM +13 / M&G +31 / REA +0.12 / IMF +0.02

Consigned by CURTIS YOUNTS & SON, BELTON



55

F&F JDM ROCKER 115

Calved 04/02/11 • #43312316 • Tattoo: 115

STAR ROCK DOMINO 5N [DLF,IEF]
 C Y STAR ROCK 24
 CY GOLDEN LADY 271
 BR DM 15 KEY 1167
 F&F JDM DAISY 896
 F&F MS DREAM SCICLE 301

BW +3.7 / WW +40 / YW +63 / MM +15 / M&G +34 / REA +0.16 / IMF -0.02

Consigned by CURTIS YOUNTS & SON, BELTON

*We would like
 to thank
 all the consignors,
 buyers and
 sale attendees
 for your support.*

– Jack Chastain
Texas Hereford Association

– Ty deCordova
Buffalo Livestock Marketing, Inc.

**Female information
 will be available sale day.**

Pay Close Attention

to Lot#s 9, 10, 11, 12, 13 & 14

... they're ours!

FUSTON
HEREFORDS
TURKEY, TEXAS

Mike Fuston • 806-423-1303 • Cell 940-867-7336
Denny Fuston • 806-423-1118
mike@fustonherefordranch.com

Dr. John D. and Dorothy Mehaffey
Off: 817-923-6719 • Cell: 817-271-3848

SELLING 18 SERVICEABLE-AGE BULLS

Lots #32 thru #49



Registered Hereford Cattle
4438 FM 3212
Dalhart, Texas 79022

Allan Ricketson, Manager
806-384-2177 • 806-333-0624

JoWayne Summerour
806-384-2110

**Ours are
stout, horned
bulls, and ...
ready.**

**Take a close look at
#15, #16, #17, #18**

McINNIS 
CATTLE COMPANY Est. 1896

14200 Highway 183 N. • May, TX 76857
Bill McInnis • home 325-646-3884 • cell: 325-642-8823
Ben McInnis • home 325-646-4134 • cell 325-647-4159
fax 325-646-3234
e-mail: mcinnis@centex.net • www.mcinniscattle.com

Expect

growth, performance and quality

from

Lot #27

Lot #28

Lot #29



RAFTER J

Colt Johnson • 325-280-7975
Larry Johnson • 325-692-3940
1917 Hillside Road • Abilene, TX 79603
rafterj@dishmail.net

*Honor the special people
in your life and...
our Hereford Heritage*

The Texas Hereford Auxiliary is now taking orders for bootjacks crafted by **Crawford & Company of Uvalde, Texas.**

The beautiful cast iron bootjacks feature a Hereford head on the leather footplate. A brand or up to 3 initials may be engraved on the leather to further personalize your bootjack.

These bootjacks are ideal for friends and family members. Remember this Hereford gift idea for birthdays, anniversaries, graduation and other occasions. Proceeds will benefit Texas Hereford Auxiliary programs.



Bootjack Order Form

NAME: _____

PHONE NUMBER: _____

E-MAIL: _____

MAILING ADDRESS:

STREET _____

P O BOX: _____

CITY: _____

STATE: _____ ZIP: _____

SHIPPING ADDRESS IF DIFFERENT FROM ABOVE:

STREET _____

P O BOX: _____

CITY: _____

STATE: _____ ZIP: _____

_____ Bootjack w/Hereford head only @ \$85 each \$ _____

_____ Bootjack w/Hereford head and
one line of personalization ** @ \$90 each \$ _____

**include drawing of brand or initials on
separate sheet

Shipping and handling \$20.00/per item \$ _____

Total due when order is placed \$ _____

Make check or money order payable to

Texas Hereford Auxiliary

and mail with the order form to:

Texas Hereford Auxiliary

c/o Susan Turner

P O Box 236 • Rochester, Texas 79544

Phone: 940-742-3347 • Fax: 940-742-3547

*Thank you for your support
of the Texas Hereford Auxiliary and our work
in promoting Herefords and Hereford youth.*



Fall 2012 Entry Info Form

The Genetic Development Center (GDC) is a state of the art bull and heifer development facility boasting the largest and most advanced individual feed intake system in the southern United States. The only one of its kind in the south, the GDC can deliver individual feed efficiency data to producers while still growing and developing their animals like a regular performance test.

The proven individual feed intake technology of GrowSafe Systems Ltd provides accurate feed efficiency data as well as traditional performance and gain measurements. Also located on the property are Sexing Technologies' ET and IVF embryo facilities, as well as their custom semen sorting division.



Genetic Development Center Features

- 40 GrowSafe feed nodes divided across 10 pens
- 10 regular gain test pens with concrete feed bunks
- All pens are 200' x 60' with 32 head/pen
- 375 ft²/head
- Water, feed, and shade design dictate animal movement
- Custom Temple Grandin designed working facility
- 640 head one-time capacity; capable of 1280 head/year
- 112-day gain test with 21 day diet adaptation period
- Carcass ultrasound, Breeding Soundness Exam
- Yearling Measurements provided during test
- On staff veterinarian and a consulting nutritionist
- Custom designed rations at privately owned mill



The **largest** and most **advanced** individual feed intake system in the Southern United States!

Eligible Age Range to Enter

January 1 – May 15, 2012

Fall 2012 Schedule

Jan., Feb., Mar. Born Calves		April & May Born Calves	
Oct. 8-10	Receive TB tested Cattle	Nov 12-14	Receive TB tested cattle
Nov. 1	Start Test	Nov. 29	Start Test
Dec. 27	Intermediate weight	Jan. 24	Intermediate weight
Feb. 21	End Test	March 28	End test

Health Requirements

- TB negative within 60 days prior to arrival at the GDC. It is at your advantage to TB test the bulls at your local clinic. However, TB testing arrangements have been made with a veterinarian in Navasota for bulls arriving without TB results at the expense of the owner.
- GDC will provide the trucking of TB negative cattle from the Navasota veterinarian to test facility.
- Brucellosis proven negative through a Brucellosis CF test.
- Must be weaned 45 days prior to delivery Veterinarian or vet supplier approved vaccinations for Pasteurella, 7 way Clostridium, IBR, BVD, PI3, BRSV, Haemophilus Somnus
- Two rounds of vaccinations with at least one of those rounds using a modified live vaccine.
- Upon arrival animals will be vaccinated for IBR, BVD, BRSV, PI3, as well as a wormer for both internal and external parasites.

Animal Costs

1. **BULLS** - The All-Inclusive fee for the full 133 days is \$965 per bull. This includes all feeding costs, GrowSafe measurements, carcass ultrasound, yearling measurements, breeding soundness exams, entry vaccinations, tagging, weighing, etc.
2. **HEIFERS** - The All-Inclusive fee for the full 133 days, minus semen breeding soundness exam, is \$945 per heifer. This includes all feeding costs, GrowSafe measurements, carcass ultrasound, yearling measurements, entry vaccinations, tagging, weighing, etc.
3. An initial non-refundable down payment of \$100 is due on arrival. The remaining balance will be divided into 4 equal monthly payments.
4. Veterinary expenses will be charged on an as needed basis.

* *Custom Sexed Semen Artificial Insemination services are available for heifers submitted to the Genetic Development Center.*

** *It is solely the Animal Owner's responsibility to acquire and maintain liability, casualty or other insurance, adequate to protect the Animal Owner from any loss or injury of animals*

** *The Genetic Development Center reserves the right to collect/ market tissue or blood samples along with performance and efficiency data for use in private feed efficiency research*

We cover the entire state.

Representing buyers and sellers of farms, cattle & horse ranches.

We are one of the top marketers of farm and ranch land, with over 20 years of experience. Our well regarded reputation in the market and our extensive contacts benefit you in many ways.

Our vast experience in selling working cattle and horse ranches as well as hunting and recreational properties and producing farms has made us a market leader.

Our agents know and offer you access to the best appraisers, farm and ranch lenders and surveyors.

We create attractive, detailed brochures which are distributed to brokers and prospective buyers.

We continually formulate innovative methods and techniques to maximize exposure of our property. Since 1983 we have invested over \$1,250,000 in media placement.

Everyone in our organization takes pride in our professional service. We provide you with prompt responses to your questions and guard your confidentiality.

When you decide to sell, call us. You'll be glad you did!



"Country Living" acreage with homes, stables or other improvements.

Unmatched Performance Since 1983

DONLIE McMULLIN REALTY

Phone: 254-547-0172 • Fax 254-542-1489

Toll Free: 1-800-200-8966

202 S. 1st Street • P.O. Box 794

Copperas Cove, TX 76522

e-mail: donliemcmullin@earthlink.net

Feed Ration

- Adaptation ration – Upon arrival, cattle will be transitioned to the Gain Test Ration with hay until they are adapted to ad-libitum intake.
- Gain Test Ration - A steamed flake corn, alfalfa pellet, and cottonseed hull based total mixed ration (TMR) targeting 3.5 lb/day gain will be fed adlibitum according to consulting nutritionist and GrowSafe guidelines.



Comfortable... Clean... Efficient

Genetic Development Center, a division of Inguran LLC
Office: 936.870.3036 • Fax: 936.870.3038
22909 FM 2154, Navasota, TX 77868

Joel Walter: jwalter@sexingtechnologies.com
Ryan Doerner: rdoerner@sexingtechnologies.com
Dustin Dean: ddean@sexingtechnologies.com

Midcontinent Livestock Supplements

Forage Enhancing Program

Recondition the cows after weaning.

MLS #1 SUPPLE-LIX
All natural protein tub with high vitamin and trace minerals levels for cattle needing both protein and minerals on roughage diets.

Get calves off to the right start.

MLS #5 STRESS
An all natural protein, energy, vitamin, and trace mineral tub for young cattle during weaning, shipping, or stress. Has Availa®4 from Zinpro®

www.mlstubs.com

Kyle Latham---254-715-2162



Fall 2012 Entry Form

We would appreciate knowing your interest in testing your animals as soon as possible. Upon receipt of the entry form, we will send you a more descriptive Genetic Development Center field sheet and contract

Owner/Manager _____ Phone _____

Ranch Name _____ Email _____

Mailing Address _____

City _____ State _____ Zip _____

No. of Bulls/Heifers	Breed(s)	Birth Date Ranges
Example: 15	Brangus	January - March
_____	_____	_____
_____	_____	_____
_____	_____	_____

Please fax, email or mail nomination forms upon completion by October 1, 2012

Genetic Development Center, a division of Inguran LLC
22909 FM 2154, Navasota, TX 77868
Office: 936.870.3036 • Fax: 936.870.3038

Joel Walter: 979.324.6004, jwalter@sexingtechnologies.com
Ryan Doerner: 979.571.0028, rdoerner@sexingtechnologies.com
Dustin Dean: 806.789.6359, ddean@sexingtechnologies.com

Prepare your estate plan for changes in tax rules

Brought to you by Jacqueline N. Davie
In conjunction with Lincoln Financial Advisors, a
registered investment advisor.

Federal estate tax laws have changed four times since 2008, and they're scheduled to shift again at the end of this year. The constant flux can make it hard to know when to adjust your estate plan and what changes to make. Ranchers often feel these changes more profoundly by the very nature of their assets, the largest of which is typically land. With land values increasing, large, illiquid land holdings can put a rancher's heirs in a position to sell of assets to pay estate taxes at bargain prices reducing their inheritance, sometimes significantly.

Currently, the first \$5.12 million of your estate is exempt from estate transfer taxes. Amounts after that are taxed at a rate of 35%. But in 2013 the exemption is scheduled to revert back to \$1 million, while the maximum tax rate increases to 55%.

Whether Congress will allow that to happen is anyone's guess. But regardless of what happens with estate tax laws, you can still draft an estate plan that stays relevant and reflects your wishes by telling your lawyers you want something flexible.

Read the fine print

There is no need to rush to your estate planning attorney every time Congress changes the tax code. It's more important to review your estate plan after major life events—for example, the birth of a child, an illness or a divorce. You may also want to

review your estate plan if you switch jobs or experience a sudden change in your family's finances.

When reviewing your estate plan, make sure the language it uses doesn't leave you vulnerable to changes in the law. For example, your plan may specify that a trust should be funded up to the current estate tax exemption or a certain percentage of that limit. Such structuring is often used to maximize the benefits of the current law. But a change in exemption levels—say, from \$1 million to \$5 million—could fundamentally alter the role the trust plays in your estate plan.

For example, consider the case of "AB trusts," popular tools used by couples to pass assets to their heirs. One strategy for these trusts is to leave the full estate tax exemption to children while leaving the remainder of the estate to the surviving spouse. But if the exemption amount has increased since you drafted your estate plan, you could end up giving your entire estate to your children—leaving your spouse with nothing.

Stay flexible

While some tax law changes can complicate existing estate plans, other rules are designed to add flexibility to the estate planning process. Case in point: A new provision enacted last year allows surviving spouses to add any unused portion of their deceased spouse's \$5.12 million exemption to their own exemption. That means couples can pass up to \$10.24 million of their estate to their children tax-free, without needing a complicated

estate plan. (That portability of the estate tax exemption between spouses is scheduled to expire at the end of this year, although it is unclear whether that will actually happen.)

Disclaimer trusts provide another way to add flexibility to your plan. With these trusts, the surviving spouse can disclaim, or refuse, any of the inherited assets, landing those assets in a separate, tax-exempt trust that can be passed on to your heirs. The catch is that the ultimate decision rests with the surviving spouse. You can either take your chances with portability or create a disclaimer trust.

The estate tax uncertainty makes for fiery debate in Washington—and heartburn among tax advisors—but it doesn't have to cause you stress. Just work with your estate tax professional and financial planner to determine the appropriate solutions for making your estate plan less vulnerable to changes, while still helping you toward achieving your estate planning goals. ★

CRN201207-2070463

Jacqueline N. Davie is a registered representative and investment advisor representative of Lincoln Financial Advisors Corp., a broker/dealer (member SIPC) and registered investment advisor, 1330 Post Oak Blvd. #2800, Houston, TX 77056 713-552-7966 offering insurance through Lincoln affiliates and other fine companies. This information should not be construed as legal or tax advice. You may want to consult a tax advisor regarding this information as it relates to your personal circumstances. The content of this material was provided to you by Lincoln Financial Advisors Corp. for its representatives and their clients.



THE BRAND TO TRUST

With over 43 years of experience, we have the expertise to help you find the perfect feeding solution for your operation. We offer specially designed feeds for all types of livestock operations, from top quality breeding cattle to roping calves and more.



Gorman Milling Co., Inc.
Gorman, TX (800) 588-2252
REDCHAINFEEDS.COM



South Texas Hereford Assn Fall Sale
Offering Hereford Bulls, Females & True F, Females
Mark your calendars!
Saturday, October 27, 2012, at 11:00 a.m.
Beeville Livestock Commission, Inc.
2218 US Hwy 59E, Beeville, Texas



For sale or consignment information contact:
Robbie Morish, SECRETARY, (361) 920-0012
or info@southtexashereford.org
Check website in October for updated catalog & sale order. www.southtexashereford.org
AUCTIONEER: LEO CASAS, III



Find us on Facebook

Brought to you by:





For the first time ever, THA offers a custom piece of jewelry.

THA Medallion Order Form

NAME: _____

HOME MAILING ADDRESS: _____

CITY: _____

STATE: _____ ZIP + 4: _____

PHONE: _____ MOBILE: _____

EMAIL: _____

QTY	STERLING SILVER	24k VERMEIL	JUMP RING FOR BRACELET	BAIL FOR NECKLACE	UPGRADE - DESCRIBE	FINISH ANTIQUE OR BRUSH	GIFT WRAP	ITEM PRICE	TOTAL

Base Price: \$250.00 - Sterling Silver

Upgrades include:

- 1 brown diamond for eye: \$40
- Bail w/3 brown diamonds: \$148.00
- 4 brown diamonds in bezel: \$160.00
- Diamond bezel (60 diamonds): \$2,450.00
- 24k vermeil plate: \$100.00
- Gold available. price upon request.
- Engraving:
 - your brand on front: \$75
 - personalized message on back: \$25
- 20" sterling silver chain, price upon request
- 7" link bracelet, price upon request
- Gift Wrap, price upon request

For engraving, please draw your brand here and or write in your personalized message.

REGULAR SHIPPING AND HANDLING	\$
OVERNIGHT SHIPPING	\$
SUBTOTAL	\$
ADD STATE SALES TAX 8.25%	\$
TOTAL AMOUNT ENCLOSED	\$

Make check payable to:

Texas Hereford Association

fax order form to: 817-831-3162 or scan and e-mail to: texashereford@sbcglobal.net or mail to:
4609 Airport Freeway, Ft. Worth, TX 76117.
Call 817-831-3161 for details.



THA Custom-Made Boot ORDER FORM

Size: Custom Fit at Madisonville Store or use a Justin shelf boot size

Hide: Elephant Ostrich Mule

Toe: Round Square

Heel: Walking Riding

Color: Ostrich • Cognac \$449

Elephant • Brown \$449

Mule • Brown \$349

other colors upon request

NAME: _____ Fax or Mail to: _____

ADDRESS: _____ Texas Hereford Association
4609 Airport Freeway
Fort Worth, Texas 76117
817-831-3161

PHONE: _____ Fax: 817-831-3162
texashereford@sbcglobal.net

EAST

H² RANCH AND CATTLE CO.
 KEVIN W. HARTLEY
 h2ranch@rodzoo.com
 7787 ROCKY RIDGE LN • MADISONVILLE, TX 77864
 OFFICE: 936-349-0439 MOBILE: 936-661-0306

Gibbs Ranches
 W. Paris, Jr. & Jan Gibbs
 Box 11 • Caldwell, TX 77836
 (979) 567-3740

Still River Ranch
 Larry Woodson • 214-491-7017
 Bonham, Texas
 ranch located 10 miles south of Bonham
 and 1 mile south of Gober

Raising cattle in Texas since 1855
SKRIVANEK RANCHES
 Joey & Susan Skrivaneck, owners
 407 W. Mustang • Caldwell, TX 77836
 Joey res. (979) 567-3857 • cell (979) 224-4698 • office:
 (979) 567-3131 • ranch (979) 272-8133 • fax (979) 567-2373
 9 miles E. of Caldwell on Hwy 21, or 15 miles W. of Bryan-College Station on Hwy 2

Harry & Cheryl Grett
 512-303-5714
 P. O. Box 969
 Elgin, Texas 78621
 g3ranch@aol.com

BAR S HEREFORDS
 Larry Schatte
 1091 P.R. 4481
 Giddings, TX 78942
 (979) 366-2451

ATLAS FARMS
Your Texas Meat & Milk Factory
 Claudia, Precious & Jimmy Atlas
 4920 CR 401 • Grandview, Texas 76050
 (817) 790-0202 • (817) 456-4691 (mobile)
 email: atlasfarms@sbcglobal.net

NOLAN HEREFORDS
 Scott, Alise, Ilissa, Bethany & Audrey
 1950 Skylark Rd. • Gilmer, TX 75645
 nolanherefords@aol.com
 www.nolanherefords.com
 Res.: 903-797-6131 • Cell: 903-738-5636

M6 RANCH
 Hereford & Charolais
 Kevin and Jessica Moore
 2929 Oak Hill Road
 Alvarado, TX 76009
 Kevin's Cell 817/822-7109
 817/790-2184 Fax
 E-mail: M6Ranch@att.net
 WebSite: www.M6Ranch.com

Noack Herefords
"Quality Registered Herefords"
7- BULLS FOR SALE 7-
 Office: 512/446-6200 • Cell: 979/218-0065

Herrmann Cattle Co.
Herefords Since 1938
 P.O. Box 366 • Caldwell, TX 77836 • 979/567-4204
Clay Herrmann Carl Herrmann
 Braford Div. • 979/567-9604 Hereford Div. • 979/567-9465

BAR OAK RANCH
 RANDALL BARNES & SONS
 HEREFORD BREEDERS
 TOLAR, TEXAS
 (817) 279-3543 Randall email us at:
 (817) 243-5867 Craig herefords@baroakranch.com

Williams Family Herefords
 Herb and Susan Williams
 158 P.R. 2531
 Hwy 51 N. • Decatur, TX 76234
 Herb cell (940) 393-1650
 Home (940) 466-3381 • Ranch (940) 627-5325
 herbsusan@msn.com • www.williamsfergusonranchlp.com

Decker CATTLE SERVICES KJB
 Custom Fittings
 Junior Show Prospects For Sale
 Hillsboro, Texas
 (254) 582-1952 (972) 938-1952

Jackie Pullen Est. 1985
PULLEN HEREFORDS
 972-571-5906 CELL • 972-722-5081 RES
 460 Pullen Road • Rockwall, TX 75032

GKB Cattle
 Hereford Cattle
Gary & Kathy Buchholz
 P.O. Box 2807, Waxahachie, TX 75168
 Res: 972-937-0417 Cell: 214-537-1285
 Fax: 972-937-0418 Cell: 214-537-1306

"Stressing Excellence In Polled Herefords"
Larsons' Polled Herefords
 Ken and Carolyn Larson, Owners
 972-223-6450 Office • 972-223-8955 Home
 254-435-6063 Ranch Office • 972-230-0629 Fax
Lee Larson, executive mgr • 972-824-5869 Cell
 2793 F.M. 1991 • Clifton, Texas 76634
 www.larsonspolledherefords.com • RunLRanch@aol.com

Metch POLLED Herefords
Dams of Distinction Breeder
Don, Ann and Barbara Metch
 903-848-8614 • 903-848-7366
 Fax 903-848-9064 • Certified Herd #5526
 1259 V.Z. C.R. 2506 • Canton, TX 75103

The Doyle Difference
"Genetics of today's leading performance families."
DOYLE HEREFORD RANCH
 P.O. Box 73 • Wolfe City, TX 75496
 mobile: 214/240-4538
 http://www.bullshop.com/tx/doyleherefordranch.php
 email: mdoyle0326@yahoo.com

LEE TERRELL
 REAL ESTATE
 Residential • Farms • Ranches
 Commercial • Property Evaluations
 (903) 868-2505 • Res. (903) 893-2289
 cell (903) 815-1299
 2404 San Miguel • Sherman, TX 75092

DDD DDD DDD
THREE D RANCH
 PAUL DAVIS
 RT. 1, BOX 242 M
 ROCKWALL, TEXAS 75087
 972/771-3396 (RANCH)
 972/771-5653 (OFC.)
 MIKE HAWKINS, MGR.
 972/348-7049 (CELL)

Jim G. Bell
 F • A • R • M • S
"Selling Hereford Bulls Since 1952"
 Off: 936-867-5126 • Res: 936-867-5125
 3275 FM 1819 • Pollok, TX 75969

Sam Dominey • Whispering Pines
 3312B SH 19N
 Huntsville, TX 77340
 936.594.3986 (res)
 936.291.3009 (office)
BULLS FOR SALE

Sunny Hill Ranch
 Pete Johnson
 Registered Polled Herefords
 Hwy. 94 West • 5 Miles
 Office 805 Sayer Lufkin, TX 75904
 Office: (936) 632-1465
 Home: (936) 875-2398
 e-mail: pijmhj@yahoo.com


Mathias
 Registered Herefords & Paint Horses
 Kurt • Brenda
 192 CR 4040 • Mt. Pleasant, TX 75455
 903-572-2396 • kmathias@txt.net

NELSON
 Land and Cattle Co.
 Corporate Office: 2415 Coll Rd. Suite C Plano, Texas 75075 972-596-4335 jnelson@preston.com
 Ranch Office: Ron Dugger HC 71 Box 1075 • 1273 Highway 99C Kingdon, OK 73439 903-318-3704 rldmrg@aol.com

McClatchy Eagle Hereford Ranch
 Registered Horned
 Joel & Dianne McClatchy • Cell: 214-850-5926
 206 Lakehill Dr. • Rockwall, TX 75087
 Ranch: 1000 HCR 1212 • Blum, TX 76627

CENTRAL / SOUTH

B "Registered Herefords Since 1938"
DUDLEY BROS. Box 10, Comanche, Texas 76442
 Office: 325/356-2284 • Fax: 325/356-3185
 John: 325/356-3767 • Tom R.: 325/356-3918
 E-Mail: dudleybros@comanchetx.com

One Star

Hereford Ranch
 1150 Estates Drive
 Abilene, TX 79602
 A.L. "Dusty" Rhodes
 Ranch: 940-867-0918
 Office: 325-673-3200
 Res.: 325-673-7592
 Fax: 325-673-2840
 lonestarhereford@yahoo.com

C/2
Cattle Co.
 Pearsall, TX
 "For Quality Hereford Cattle
 'Bulls & Females
 Call
 Louie & Helen Carroll
 503 #, Trinity
 Pearsall, TX 78061
 830/334-2973

EDGAR HEREFORD RANCH

 Bobby & Agatha
 P.O. Box 68
 4525 Cty Rd 295
 Blanket, Texas 76432
 Cell: 325-642-2651
 email: abedgar@cctc.net

Mockingbird Hill
 Established in 1854
 Bulls, Females, Club Calves
 P.O. Box 516 • Mineral Wells, TX 76067
 817-244-2637 res. or 940-325-2033 ranch
 Ranch located 10 miles south of Mineral Wells on US281

Howard Herefords
 Quality Herefords Since 1950
 Bulls & Females For Sale
 Visitors Always Welcome
 DAVID HOWARD P.O. Box 1039
 830/988-2241 SABINAL, TX 78881


Hidden Oaks Ranch

 Keith, Cindy, Shelby, Koby,
 Harley & Brody Rogers
 171 CR 407
 Hamilton, TX 76531
 (254) 386-5699
 www.hiddenoaksranch.com
 e-mail: hereford@wildblue.net
 "Raising respectable kids and herefords"

MW HEREFORD RANCH
 P.O. Box 1754 • Brownwood, TX 76804
 325/646-0956 or 646-5501 (office)
 "Top Quality Herefords" "Home of Pathfinder"

ROCKIN' W POLLED HEREFORDS

 Maynard Warnken • 979-561-8846
 Kevin Warnken • 979-561-8108
 e-mail: rockinw@cvcx.com
 www.rockinwranch.net
 Fax 979-561-8867 • Drawer 29 • Schulenburg, TX 78956

Jackson Hereford Ranch

 6481 Stephens CR 105
 Ranger, Texas 76470
 Robert & Dena • (254) 647-3671
 Fax (254) 647-3622
 denajackson@agristar.net
 Ranch located 15 miles north of Ranger on FM 207

W. K. GORDON, JR.
RANCHING OPERATIONS
 1546 FM 203
 Walnut Springs, TX 76690
 (254) 797-5322

PERFORMANCE PROGRAM BREEDER
NEEL POLLED HEREFORDS
 George E. Neel, Jr.
 Box 450029 • Laredo, TX 78045
 (956) 723-6346 Office
 (956) 722-1904 Home

BULLS FOR SALE
LANG HEREFORD RANCH

CERTIFIED ANXIETY 4th
 6416 CR 3420
 Lampasas, TX 76550
 512/556-6469 • cell: 512/556-7956
 wandalang48@yahoo.com

Circle M Ranch

 P.O. Box 405
 Meridian, TX 76665
 Jane S. Murphey
 Manager
 254/855-1276 (cell)
 254/435-2162 (res.)

Registered Herefords since 1956
Winsauer Herefords
 713/471-3994
 P.O. Box 39 • Beeville, TX 78104
 Ranch located 4 miles east of Beeville on Ellis Rd.
 Visitors Welcome

Lesley Herefords

 Roy Lesley 254/965-5123
 Kenneth 254/965-4603
 31681 U.S. Hwy. 67E
 Stephenville, TX 76401

Ross Wilson Herefords
 Ross Wilson • 254-965-6566
 2305 W. Lingleville Rd., Apt. 22
 Stephenville, TX 76401
 Joe D. Sherrod • 512-809-3470
 Ranch located 4 miles west of Gorman, TX

SPEARHEAD RANCH


 Paul and Sheila Funk • 254-289-7657
 525 County Road 51
 Copperas Cove, TX 76522-7004
 sheilabfunk@aol.com • www.spearheadranch.net

Sjolander Ranches
 George 254-379-8983
 Jan 254-412-8213
 Residence 254-896-2219
 1290 PR 504 • Riesel, Texas 76682

Flying 'S' Herefords
 Registered Line One Herefords • Paluxy, Texas

 Jim Strode 214-361-6900
 James Strode 214-533-9669
 Rick Wilson 817-219-2225
 James.strode@gmail.com

CY
Curtis Younts & Son
 Established in 1959
 Curtis Younts, Jr.
 3648 Elmer King Rd. • Belton, TX 76513
 254/939-6492 (residence) 254/760-0243 (cell)

Muleshoe Ranch

 J.T. Echols DVM
 P.O. Box 709 • Breckenridge, TX 76424
 Office: (254) 559-9739
 Mobile: (254) 559-0156
 muleshoeranch@gmail.com
 muleshoeherefordandangus.com

WESLEY THEURET
 Res./Ranch: 830-583-3365
 Cell: 210-315-0103
 2348 CR 165 • Kenedy, TX 78119-5101
 theuret@sbcglobal.net

ALPHA EQUINE BREEDING CENTER
 Hereford Bulls with Eye Pigment Breeder of great Cutting Horses

 M.C. Baker, DVM
 Clint Baker, Mgr. • 817-279-8275
 www.alphaequine.com
 2301 Boyd Road • Granbury, TX 76049
 Fax 817-279-7621

RSS R. SCHLEGEL & SONS

 Route 2, Olney, TX 76374
Registered Herefords Since 1974
 Bulls, Females, Club Calves
 email: rsshrfd@brazosnet.com
 Ranch (940) 873-4437 Home (940) 873-4621

COVERED M CATTLE CO.

 Joshua Martin • Cell 210-260-7273
 Residence: 830-393-4783
 475 CR 224 • Floresville, TX 78114
 e-mail: coveredmcattle@gmail.com
 www.coveredmcattleco.com

WEST

FUSTON HEREFORDS

Mike Fuston (806) 423-1303 Cell (940) 867-7336 • mike@fustonherefordranch.com
Denny Fuston (806) 423-1118
TURKEY, TEXAS

Honeymoon Herefords

"Breeding cattle for the 21st century."

Robert L. Mezger
614 Honeymoon Ranch Rd.
Marble Falls, TX 78654
830/598-2258

B-BAR-HEREFORDS

Brad, Glenna, Lyndi,
Hunter & Danci Stuart

876 SH 70S
Roby, Texas 79543
Res. (325) 235-5402
Mob. (325) 338-5111



"Visitors Are Always Welcome"



DAVID CARVER
806-879-2166 Office
806-292-4444 Mobile

JIM BOB CARVER
806-488-2325 Night
806-679-2370 Day

AHA Golden Breeder Award • Est. 1929

LEE HEREFORD RANCH

Ira F. Lee
6467 Seawillow Rd. • Lockhart, TX 78644
512/398-3032
e-mail: iralee@hughes.net
Registered Herefords For Sale

Cole & Susan Turner
940-742-3347
Rt. 1, Box 254
Rochester, TX 79544

CASE RANCH HEREFORDS

Box 1218 Eldorado, TX 76936

Ranch: 325/853-2368 FAX: 325/853-2681
Pete Case: 325/650-6209 http://www.caseranch.com
email: pete@caseranch.com
Ranch Rd. 915 - Between Eldorado and Mertzon

David Moore
325/576-3684 ofc.
325/576-2205 res.
e-mail: info@piedpiperfarms.com
website: www.piedpiperfarms.com



P.O. Box 309
HAMLIN, TEXAS 79520

Coates Ranch Co.

www.coatesranch.com

Box 645 • Mertzon, TX 76941
Steve Wayne: 325-835-2531
Stephen: 325-226-4184
Email: scoatesjr@yahoo.com

McINNIS CATTLE COMPANY

Est. 1896
e-mail: mcinnis@centex.net
www.mcinniscattle.com
14200 Highway 183 N. • May, TX 76857

Bill McInnis
325-646-3884 home
325-646-3234 fax

Ben McInnis
325-646-4134 home
325-647-4159 cell

Bill's cell:
325-642-8823

YOUNGBLOOD RANCH

"Registered Herefords Since 1937"
Arlan
2500 E. Hwy. 180
Lamesa, TX 79331
806/497-6412
Mobile: 806/759-8102



J-HEREFORD RANCH

Bull & Heifers for Sale
Jim Darnell - Owner
5 Paseo de Paz Lane, El Paso, TX 79932
915-479-5299 (Jim's Cell) • 915-549-2534 (Sue's Cell)
915-532-2442 (Office) 915-877-2535 (Home)
email: barjbarherefords@aol.com

"Texas' Only Hereford Operation West of the Rio Grande"
Se Habla Espanol



JAMES L. POWELL

www.powellranches.com
Ft. McKavett, TX 76841

325/653-1688 Office
325/853-2316 Res.

David Neal
Ranch Manager
325/651-2826

Ranch located 25 miles
east of Eldorado on Hwy. 190.

Britt Mynatt
Herd Manager
325/853-2202

KNOX Y HEREFORDS

Tee & Joan Knox
Box 68 • Tarzan, TX 79783
432/459-2273

www.knoxherefords.com
Cattle for sale at the ranch.

McKNIGHT Ranch Co.

Bobby McKnight, Ranch Manager
432/426-3003

P.O. Box 1042 • FT. DAVIS, TEXAS 79734

ROCKING CHAIR RANCH

L.C. Whitehead, Owner

Randy Wood, Mgr. • 325/396-4911

Mark McClintock, Consultant

Mobile: 325/650-4223

5749 Rocking Chair Lane
Ft. McKavett, TX 76841



BUTTON ESTES RANCH, LTD.

BUTTON ESTES, JR. & PATRICIA ANN ESTES
1921-1998 GENERAL PARTNER

432/683-1406 • Fax 432/570-7769

2000 WEST TENNESSEE • MIDLAND, TEXAS 79701

BEAU & BARBARA 432/682-2272 • GINNY 432/687-2454

RAFTER J CATTLE CO.



Colt Johnson • 325-280-7975

Larry Johnson • 325-692-3940

1917 Hillside Rd • Abilene, TX 79603

rafterj@dishmail.net • www.rafterjcattle.com

WEINHEIMER RANCH, INC.

Established in 1921

For All Your Cattle Needs

Roy
830/644-2226

Box 957

Stonewall, TX 78671

Len
830/889-2026

Mimms Herefords

Jerry, Brady, Rhett & Ryan

Lorenzo, Texas

806-842-3459



LINE ONE HEREFORDS

• Light Birth Weights • Gentle Disposition
• Milk and Growth • Longevity

CIRCLE ME RANCH Gardendale, TX • Seminole, TX

Miles and Mary Eckert

16020 N. Wichita Ave. • Gardendale, TX 79758

432/563-2627 (Res.) • 432/559-9667 (Off/Ranch)

Since 1947

Walker Herefords

Stamford, TX • La Grange, TX

Don 325-773-2062

Tom 979-247-4119 • Cell 979-966-8353

Show Steers For Sale

MANN CATTLE CO. LUBBOCK, TX

Mark, Briss, Hadley and
Colby Mann
Hadley (cell) 432-788-8375
Mark 432-788-7075
Res. 806-762-8697

The Functional Kind
e-mail: mannmen1@yahoo.com
www.manncattle.com

5

SCHARBAUER RANCH LLC

Known for the best commercial Herefords
and ranch horses in the state.

To purchase Hereford females or horses call:

Chris Scharbauer

Res. 806-935-9411 • Cell 806-679-7995

P.O. Box 50008 • Amarillo, TX 79159



CLYDE HENSON

P. O. Box 820 • Kermit, TX 79745

432-940-8882



Massey Hereford Ranch

Sam and Kila Massey

P. O. Box 518 • Wickett, TX 79788

432-940-7720

Sam.Massey@co.ward.tx.us

www.masseyherefordranch.com



FEBRUARY 2, 2013

Make plans to attend
THA ANNUAL MEETING
in Fort Worth

PANHANDLE / OUT-OF-STATE / COMMERCIAL

E&E RANCHES, INC.
Jo Ellard, Owner
 P. O. Box 802207 • Dallas, Texas 75380
 Office (972) 532-2100 • Fax (972) 532-2190

Ray Meyer, Manager
 RR 1, Box 108A • Fall River, Kansas 67047
 (620) 658-4494 • Fax (620) 658-4426



TOMMY BARNES
 -AUCTIONEER-
 2060 S. Hull Street
 Montgomery, AL 36104
 334/462-4004



Indian Mound Ranch
 805 Conklin • Canadian, TX 79014
Lee & Jacqui Haygood
 Res: 806/323-8232
 Ranch 806/375-2263
 Email: lee@indianmoundranch.com



4134 Co. Hwy. 30 • Horton, AL 35980

Glynn Debter
 (205) 429-2040
 Perry Debter
 (205) 429-4415
 Fax
 (205) 429-3553



SCHACHER
 AUCTION SERVICES
Robert Schacher
 817-219-0102
 5832 Wales Ave., Ft. Worth, TX 76133
 rob@schacherauction.com
 www.schacherauction.com

BARBER RANCH

Channing, Texas 79018

Dale & Mary Barber 806/235-3692
 Justin Barber 806/681-5528
 www.barberranch.com
 email: barberranch@wildblue.net



Michael & Connie Perez
 575/633-2038
 Michael's cell
 575-403-7970

Kyle's cell • 575-403-7971
 Drew's cell • 575-403-7115

901 Quay Road 96 • Nara Visa, NM 88430



LEO CASAS, III

Off: 361-362-COWS • Fax 361-362-1035
 Cell: 361-362-5863
 casascattle@hotmail.com
 171 Fairway Ridge • Beeville, TX 78102

Mike & LaReshia Bragg



1923 Shawnee Trail
 Dalhart, TX 79022
 home 806-249-5367
 cell: 806-333-4486

website: mlcattle.com • Email: mlcattle@mlcattle.com



Mark & Cristy
 off: 406-285-6985
 cell: 406-539-6885

P.O. Box 126
 Willow Creek, MT 59760
 mark@cooperherefords.com
 www.cooperherefords.com



Silveus
 INSURANCE GROUP
 877.773.9633

www.rangelandinsurance.com

B & C CATTLE CO.

Bill or Chad Breeding

1301 N. Lions • P.O. Box 186
 Miami, TX 79059 (806) 868-4661 or (806) 570-9554
 breeder@amaonline.com

MESSNER HEREFORDS



Milton Messner
 (580) 837-5384

Van Messner
 (580) 837-5532

Route 1, Box 350 • Laverne, OK 73838



www.ezylift.com

John Winsauer
 713.614.9005

win@ezylift.com

Since 1908

Pronger Brothers
 Breeders of

Registered Hereford Cattle
 Stratford, Texas 79084

Phone: 806/769-4474 or 4473

MILLIGAN HEREFORDS

Since 1919

Kings, IL 61068

Robert (815) 562-6391 James (815) 562-4946
 Malcolm (815) 562-5879

Livestock



Insurance • Import • Export

HOWARD MILLER, INC.

P.O. Box 122537 • Fort Worth, Texas 76121-2537
 Howard Miller 817/732-1872 David Miller
 Representing American Livestock Insurance Co.



Quality Herefords For Sale

SUMMEROUR RANCH

Allan Ricketson, Ranch Manager
 Res: 806-384-2177 • Cell: 806-333-0624
 806/384-2110 • 4438 FM 3212 • Dalhart, TX 79022



PRAIRIE MEADOW HEREFORDS

2620 E. Lake Shore Drive • Springfield, IL 62707
 Office (217) 529-8878 • Fax (217) 529-9374
 Greg (217) 498-7095 • Gail (217) 529-4933
 Mark and Carla (217) 483-5651

DUFUR HEREFORDS

P. O. Box 166 • Caddo, OK 74729
 Bill Dufur • 580-367-9910
 Alan Dufur • 580-775-3830

Copeland Herefords

www.copelandherefords.com

859 Romero Rd • Nara Visa, New Mexico
 Clifford Copeland • 575.633.2251
 Cliff Copeland • 575.403.8123
 Matt Copeland • 580.336.8284



1/5 HOFFMAN RANCH

modern, stout, functional
 P.O. Box 287 Theford, NE 69166
 jason@hoffmanranch.com
 www.hoffmanranch.com

Denny and Dixie
 Hoffman
 530-336-5778

Jason and Kaycee
 Hoffman
 530-604-5096

HOLDEN HEREFORDS

"The Best in Line 1 Breeding"
Jack and Tresha Holden
 3139 Valier Dupuyer Rd. • Valier, MT 59486
 406-279-3301
 406-279-3300 Ranch • 406-450-1029 Mobile
 www.holdenherefords.com



H & H Herefords

Phil Harvey, Jr. Jim Bob Burnett
 575-524-9316 Cell 575-365-8291
 Cell 575-644-6925 P. O. Box 1566
 P. O. Box 40 Hope, NM 88250
 Mesilla, NM 88046 jbb@pvtnetworks.net
 Philharveyjr@comcast.net bhherefords.com

LARGENT and SONS

Hereford Cattle Since 1902
 P.O. Box 66 • Kaycee, WY 82639
 307-738-2443 or 307-738-2297
Sale Date: November 2012
 largentandsons@yahoo.com
 www.largentandsons.com

S - W HEREFORDS
 BENNINGTON, OK

Ryan Westbrook Neal Spencer
 580-775-8053 817-845-1382
 www.swherefords.com

COMMERCIAL

Craig Curtis
HayMaster™
 Nutrition Injection Systems, Inc.
 682.201.8026 • Toll Free 877.480.7870
 ccurtis.haymaster@gmail.com • www.haymastersystems.com
 Authorized dealer for HayMaster Nutrition Injection Systems, Inc.

Mark & Teresa McClintock
 Registered Herefords • Sales and Consulting
 Mark (325) 650-4223 • Teresa (325) 763-9202
 10614 Mule Creek Road • San Angelo, TX 76901
 mcclintock@wcc.net • markandteresamcclintock.com

JOHNSON
 CATTLE MARKETING
 Tom Johnson
 440 FM 246 • Wortham, TX 76693
 903/599-2403 • cell: 817/291-5121

FT. WORTH NATIONAL
COWTOWN
 Select Sale
Sunday, Feb. 3, 2013

 
Steele Embryo Service
DR. MARK E. STEELE **REGER BREEDING SERVICE**
 Embryo Transfer, Donor & Recipient
 Freezing, Sales Management
 126 Fawn Trail HC 60 Box 315
 Graham, TX 76450 Graham, TX 76450
 (940) 549-8117 (940) 549-0919 Fax
 (940) 549-2936 (940) 521-1291 Mobile
 (940) 704-2253 Mobile

44th Annual
Whiteface Replacement
FEMALE SALE
Sunday, February 3, 2013

Pre-press production of *Texas Hereford* magazine since 1995
 *We'll make you look great on paper.*
 Park Place Enterprises, Inc.
 817-877-8901 • ggpark@flash.net

Midcontinent Livestock Supplements
MLS Forage Enhancing Program
www.mlstubs.com
 Kyle Latham
 254-715-2162
 Valley Mills, TX

Circle H Headquarters, LLC
 •Pregnancy ELISA testing
 •BVD PI testing
 •NIR Feed & Forage Testing
C. Scanlon Daniels, DVM
 PO Box 1150
 3216 US Hwy 54 East
 Dalhart, TX 79022
806-244-7851 office
806-333-2829 cell
806-244-7852 fax
www.circleh.info
scanlon@circleh.info



 **Gorman Milling Co., Inc.**
 Manufacturer of
 Red Chain Feeds
 Gorman, TX
 (800) 588-2252
REDCHAINFEEDS.COM

★ events **CALENDAR**

Sept. 7-8: West Texas Fair, Abilene
Sept. 27: Indian Mound Ranch Production Sale, Canadian

Oct. 5: M6 Ranch Fall Bull Sale, Alvarado
Oct. 9: JP Family Limited Partnership Production Sale, Ft. McKavett
Oct. 11: Dudley Bros. Production Sale, Comanche

Oct. 12: State Fair of Texas Pan-Am Hereford Beef Cattle Show, Dallas
Oct. 12: Texas Polled Hereford Association Show, Dallas

Oct. 13: State Fair of Texas Youth Beef Heifer Show, Dallas

Oct. 19: W4 Ranch Production Sale, Morgan
Oct. 19-20: Star Lake Cattle Ranch Complete Dispersal Sale, Skiatook, OK

Oct. 21: Langford-Copeland Sale, Okmulgee, OK

Oct. 24: THA Fall Classic Bull Sale, Buffalo
Oct. 27: South Texas Hereford Association Sale, Beeville

Oct. 27: Debter Hereford/Fleming Angus Bull Sale, Horton, AL

Nov. 3: Annual Membership Meeting, AHA, Kansas City, MO

Nov. 3: Belles of the Royal Sale, Kansas City, MO

Nov. 4: American Royal Combined Hereford Show Kansas City, MO

Nov. 14: Barber Hereford Ranch Production Sale, San Saba

Nov. 15: Largent and Sons Production Sale, Kaycee, WY

Dec. 1: Oklahoma Hereford Association Sale, Marietta, OK

2013

Jan. 4: Sandhills Hereford Show, Odessa

Jan. 17-19: National Western Stock Show, Denver, CO

Jan. 26: Junior Hereford Heifer Show, Fort Worth

Feb. 2: THA Annual Meeting, Fort Worth

Feb. 2: Messner Herefords Production Sale, Slapout, OK

Feb. 2: South Texas Hereford Assn. Sale, Beeville

Feb. 3: THA Whiteface Replacement Female Sale & Cowtown Select Sale, Fort Worth

Feb. 4: National Hereford Show, Fort Worth

Feb. 11: S.A.L.E. Open Hereford Show, San Antonio

Feb. 13: S.A.L.E. All Breed Bull & Female Sale, San Antonio

Feb. 15: S.A.L.E. Junior Combined Hereford Show, San Antonio

Feb. 17: San Angelo Junior Hereford Heifer Show, San Angelo

Feb. 20: S.A.L.E. Hereford Steer Show, San Antonio

Feb. 25: Houston Open Hereford Show, Houston

Feb. 26: Mill Creek-Pied Piper Sale, Alma, KS

Feb. 27: Houston All Breed Bull Sale, Houston

Mar. 2: Houston All Breed Female Sale, Houston

Mar. 9: The Black Hereford Sale, Alvarado

Mar. 9: NE Texas Hereford Assn. Sale, Mt. Pleasant

Mar. 10: Houston Junior Hereford Heifer Show, Houston

Mar. 11: Holden Herefords Production Sale, Valier, MT

Mar. 12: Cooper Hereford Ranch Production Sale, Willow Creek, MT

Mar. 13: Houston Hereford Steer Show, Houston

Mar. 23: Cross Timbers Hereford Sale, West

Apr. 6: MW Herefords Production Sale, Brownwood

May 17-18: Star Lake Cattle Ranch Sale, Skiatook, OK

June 19-22: Texas Junior Hereford Association Combined State Show, Belton

July 14-20: 2013 Junior National Hereford Expo, Kansas City, MO

Herefords

FOR SALE

5 two-year-old bulls; 25 yearling bulls for sale. 2's are on rocky native pasture at Pinon, NM; yearlings are at Lovington, NM.

Contact: B&H Herefords
Hope NM 88250
Phil Harvey, Jr. 575-644-6925
philharveyjr@comcast.net
Jim Bob Burnett
575-365-8291
bhherefords.com

20 bulls for sale, 7 months to 20 months old.

Contact: 3-B Herefords
J.H. Blankinship
Paris, TX 75460
903 784 2677

Two-year old bull. MR J150 Rob's LV. Reg. P43230551 sired by GKB Cold Front 8776ET. Performance pedigree with superior rib eye area and solid marbling for greater production and profitability.

Contact: William Cable
Uinta Farms, LLC
Tyler, TX 75703
903-894-8789 (res.)
540-470-0518 (ranch)
brcable@gmail.com

5 two-year old bulls, horned and polled and 5 long yearling bulls for sale.

Contact: Carver Herefords
Cotton Center, TX 79021
Office: 806-879-2166
806-292-4444 (David cell)
806-679-2370 (Jim Bob cell)

2 spring yearling bulls; 30 fall yearling bull calves.

Contact: Jack Chastain
Mockingbird Hill Herefords
Mineral Wells, TX 76067
817-821-3544

2 October '11 Polled Hereford ET bulls, MSU TCF Titleist 2T ET x Star KKH Brite Kessie 266S ET. These bulls are full brothers to the 2011 National Champion Polled Female Star KKH Mirror Image shown by Mallorie Phelps.

Contact: Cutting Edge Cattle Co.
James Holder
817-879-4675
John Mehaffey
817-271-3848

5 virgin Registered Line 1 bulls, 16 - 18 months old.

Contact: Jim or Sue Darnell
El Paso, TX 79932
915-877-2535 (res.)
915-479-5299 (Jim's cell)
915-549-2534 (Sue's cell)

Polled Hereford bulls, all dark red, pigmented, thick and gentle. 2 20-month old with Kreedence, Baltic and Online bloodlines - tested and ready. 2 9-month old grandsons of Canadian champion bull, WLB Global 72M 50S.

Contact: D Bar B Cattle Co.
Aledo, TX 76008
682-429-5363 (Karla)
817-441-8757 (Bev)

9 bulls, 17-15 months of age; 1 - 24 month old bull; 23 yearling bulls, all L1 Mark Donald breeding. A few top show heifer prospects also for sale.

Contact: Doyle Hereford Ranch
Wolfe City, TX 75496
214-240-4538 (cell)
mdoyle0326@yahoo.com
http://www.bullshop.com/tx/
doyleherefordranch.php

5 - 18 month old L1 Hereford bulls for sale.

Contact: B. Edgar
Edgar Ranch
Blanket, TX 76432
254-842-6047
325-642-2651 (cell)
abedgar@cctc.net

Breeding age bulls, show heifers, cow, pairs available at all times.

Contact: H2 Ranch
Madisonville, TX 77864
936-349-0439
h2ranch@rodzoo.com
www.H2RANCHANDCATTLE.com

3 pair: 1 bull calf by 719T; 1 bull calf by Intensifier; 1 heifer calf by Pandemonium. 5 bred heifers - could be show heifers.

Contact: Charles Holloway
CSH Farms
Tioga, TX 76271
940-727-9613

3 Fall coming two-year-old bulls for sale.

Contact: Clyde Johnson, III
Clyde Johnson & Sons Hereford Ranch
Bulverde, TX 781631
210-863-1257(cell)

10 month old bulls for sale.

Contact: Pete Johnson
Sunny Hill Ranch
Lufkin, TX 75904
936-632-1465 (days)
936-465-1672 (cell)

Five bulls for sale: 1 - 1 year-old in February; 4 - 1 year old in March-April. 5 cows, 5-7 years old, all have calves and bred back. All straight Anxiety 4th.

Contact: Roland Lang
Lampasas, TX 76550
512-556-6469 (res.)
512-556-7956 (cell)
wandalang48@yahoo.com

Ten bulls for sale, 18-22 months old.

Contact: Jerry or Cindy Leaverton
Fairview Hereford Farm
Henrietta, TX 76365
940-538-4041
940-867-7196 (cell)

Two-year old, Polled Easy Deal son, great disposition.

Contact: James Morgan
Morgan Herefords
Andrews, TX 79714
432-853-3001
Email: james_t.morgan@yahoo.com

2 bulls, 20 months old; 7 yearling bulls for sale.

Contact: Curtis Wilkerson
Murphey's Circle M Ranch
Meridian, TX 76665
254-253-0718 (Curtis' cell)
254-855-1276 (Jane's cell)

2 bulls, 20 months old. Ready for service.

Contact: Ronny Raines
Denison, TX 75021
214-437-7919
rgraines@aol.com

Breeding age Horned Hereford Bulls for sale. Several to choose from.

Contact: Sjolander Ranches
Riesel, TX 76682
254-379-8983 George's cell
254-412-8213 Jan's cell

3 Registered horned, virgin bulls 14 - 16 months. The Dec. bulls are flush brothers by UPS TCC Nitro 1ET and out of one of Holden's top donors, HH Advance 4098. The Oct. bull is by a Pure Gold son, -S Gold Advance 7008G U19 and out of HH Miss Advance 8283U. Each priced at \$2,500 or \$7,000 for the lot of three.

Contact: S-W Herefords
Ryan 580-775-8053
www.swherefords.com

6 - yearling+ Hereford bulls, by top bloodlines HH 8203, HH 5212, HH 5061-Pure Gold. Solid EPD's, gentle disposition.

Contact: Lee Terrell
Sherman, TX 75092
903-893-2289 (Res.)
903-815-1299 (cell)
leeterrelland@gmail.net

11 Registered Herefords fall calving cows coming with their second or third calf; 6 commercial Hereford fall calving cows coming with their 4th calves; 7 Registered Heifers fall born (open). These cows are bred to Barber or Largent bulls.

Contact: Rick Tisdale
TT Hereford Ranch
Llano, TX 78643
325-423-2509 (cell)

100 head Angus influence heifers. OCV. 825 lbs. Bred to low birth-weight Angus bulls. Calve December through February.

Contact: Cole Turner
Rochester, TX 79544
940-742-3347
940-256-2729

Herd Reduction Sale: Excellent selection of cows, heifers and young bulls. Proven bloodlines including Felton 517 DCC Quanity 3008 and American Nick.

Contact: Wendee Whitehead
Whitehead Herefords
Rusk, TX 75785
512-970-1595
903-683-4874 (east Texas)
www.whiteheadherefords.com

Private Treaty - Registered Hereford Bull Sale, 18-24 months-old, horned and polled. Ready to go to work.

Contact: Williams Family Herefords
Herb Williams, Ranch Mgr.
Henrietta, TX 76234
940-393-1650 cell
940-466-3381 home
940-466-7237 Fax
herbsusan@msn.com

ACTIVE MEMBERS
can list cattle for sale
FREE on this page
non-member rate: \$50
e-mail your listing to:
texasherford@sbcglobal.net

advertisers INDEX



Alpha Equine Breeding Center	31	Gorman Milling Co., Inc.	28, 34	Neel, Jr., George E.	31
Atlas Farms	30	Grett, Harry & Cheryl	30	Nelson, Jim	30
B&C Cattle Co.	33	H2 Ranch and Cattle Co.	30	Noack, Leon	30
B&H Herefords	33	HayMaster	34	Nolan, Scott	1st Cover, 30
Barber Ranch	5, 33	Henson, Clyde	32	Park Place Enterprises	34
Barnes & Sons, Randall	30	Herrmann Cattle Co.	30	Pied Piper Farms	32
Barnes, Tommy	33	Hidden Oaks Ranch	31	Powell, James L.	4, 32
Bar S Herefords (Larry Schatte)	30	Hoffman Ranch	33	Prairie Meadow Herefords	33
Bell Farms, Jim G.	30	Holden Herefords	33	Pronger Bros.	33
Bragg, Mike & LaReshia	33	Howard Herefords	31	Pullen, Jackie	30
Buchholz, Gary and Kathy	30	Indian Mound Ranch	6, 33	Rafter J Cattle Co.	32
C&M Herefords	33	Jackson Hereford Ranch	31	Rockin' W Polled Herefords	31
Carroll, L.J. (C2 Cattle Co.)	31	Johnson Cattle Marketing	34	Rocking Chair Ranch	32
Carver Herefords	32	Johnson, Pete	30	S-W Herefords	33
Casas, III, Leo	33	Knox TY Herefords	32	Schacher Auction Services	33
Case Ranch	32	Lang, Roland	31	Scharbauer Ranch LLC	32
Circle H Labs	34	Largent & Sons	3rd Cover, 33	Schlegel, R. & Sons	31
Circle M Ranch	31	Larson Polled Herefords	30	Silveus Insurance	33
Coates Ranch Co.	32	Lee, Ira	32	Sjolander Ranches	31
Colyer Herefords	9	Lesley Herefords	31	Skrivaneck Ranches	30
Cooper Hereford Ranch	33	Locklear, Ward (MW Herefords)	31	South Texas Hereford Assn.	28
Copeland Herefords & Sons LLC	33	Lone Star Herefords	31	Spearhead Ranch	31
Covered M Ranch	31	M6 Ranch	30	Star Lake Cattle Ranch	36
Darnell, Jim	32	McClatchy Eagle Hereford Ranch	30	Steele Embryo	34
Davis, Paul	30	McClintock, Mark & Teresa	34	Still River Ranch	30
Debter Hereford Farm	33	McInnis Cattle Co.	32	Stuart, Brad	32
Decker Cattle Service	30	McKnight Ranch Co.	32	Summerour Ranch	33
Dominey, Sam	30	McMullin Ranch	10, 26	Terrell, Lee	30
Doyle Hereford Ranch	30	Mann Cattle Co.	32	Theuret, Wesley	31
Dudley Bros.	4th Cover, 31	Massey Hereford Ranch	32	Turner, Cole & Susan	32
Dufur Herefords	33	Mathias, Kurtis	30	W4 Ranch	3
Eckert, Miles & Mary	32	Messner Herefords	33	Walker Herefords	32
Edgar Hereford Ranch	31	Metch Polled Herefords	30	Weinheimer Ranch, Inc.	32
Ellard, Jo	33	Mezger, Jeff (Honeymoon Herefords)	32	West Texas Rehab	7
Estes Ranch, Button	32	Midcontinent Livestock Supplements	27, 34	Williams Family Herefords	30
Ezy-Lift	33	Miller, Howard	33	Wilson, Ross	31
Flying 'S' Herefords	31	Milligan Herefords	33	Winsauer Herefords	31
Fuston Herefords	32	Mimms Herefords	32	Youngblood, Arlan	32
Gibbs, W. Paris	30	Mockingbird Hill	31	Younts & Son, Curtis	1, 31
Gordon Ranch, W. K.	31	Muleshoe Ranch	31		

Announcing Complete Dispersal Sale of Star Lake Cattle Ranch • Oct. 19-20



Star Lake's 2012 Denver Grand Champion Hereford Carload. The Star Lake cow herd produced 13 Consecutive Denver Champion Carloads.

On Oct. 19th & 20th in Skiatook, Okla., Star Lake will host its final sale.

This landmark sale will feature the entire registered Hereford inventory...

- The proven donors, mature cows and young donor prospects.
- The herd sire battery and Ranch Ready bulls.
- The complete 2012 ET calf crop – bulls and heifers.
- All replacement heifers due to calve in spring 2013.
- All pregnant recipients due to calve in spring 2013.
- Hundreds of frozen embryos – spectacular selection.
- Nearly 100 lots of semen.

The offering will be packed with numerous National and Reserve National Champions.

Selling 450 Herefords
More than 750 Lots



Nat. Champ Bright Future Sells



2-Time Denver Supreme Ch. Shock & Awe Sells



Ruby x Lock-N-Load ET BC Sells

Sale Schedule

Friday 10:30 a.m. start

A selection of Hereford cattle plus all semen, embryos and pregnant recipients sell.

Saturday 10:30 a.m. start

Selling the remainder of the registered Hereford herd. Ranch Ready Bulls sell at approximately 1 p.m.



Proven Donor Rosy Lane Sells



2-Time Nat. Ch. Olivia Sells



Olivia x S109 ET HC Sells

The Dispersal Catalog mails with the October *Hereford World*. Contact our office for a catalog if you're not on the *HW* mailing list.

See starlakeherefords.com for up-to-date sale schedule.

STAR LAKE COMPLETE DISPERSAL FRIDAY & SATURDAY, OCT. 19-20, 2012 • 10:30 A.M. BOTH DAYS

SATURDAY'S SALE WILL BE BROADCAST ON RFD-TV • BOTH DAYS WILL BE LIVE ON THE INTERNET AT LIVEAUCTIONS.TV AND WWW.SUPERIORLIVESTOCK.COM • RANCH READY BULLS SELL AT 1 P.M. SATURDAY



STAR LAKE CATTLE RANCH

P. O. Box 40 • Skiatook, OK 74070
Phone (918) 396-4322 • Fax (918) 396-4350
E-mail: info@starlakeherefords.com
Web site: www.starlakeherefords.com

Contact Star
Lake for Room
Reservations

THE SEEDSTOCK SOURCE

WHERE QUALITY AND TECHNOLOGY BECOME ONE
Twelve-Time Junior National Premier Breeder

Montie Soules • Todd Herman • Max Stotz
Brad Prather • Josh Taylor • Jon Blin
Jim & Judy Blin • Randy & Debbie Blin

Cash is still King...Ten!



Supreme Champion Bull 2012 Colorado State Fair
Traces back 4 times to King Ten!
owned with Myers Cattle



Grand Champion Hereford Female 2012 Wyoming State Fair
Grand Champion Heifer 2012 Colorado State Fair
Traces back 6 times to King Ten!
owned by TP Cattle Co.

There has never been a maternal/performance sire that has dominated demand pull for as long and as popular as King Ten. Born 37 years ago, his influence is still sought after like no other Hereford bull in history; consider the following reasons why:

- \$ Intensely Sure.** King Ten is that extremely rare individual (he is himself a full brother/full sister mating) that can be successfully "stacked" over and over. Many of the current popular breed-leading sires trace back multiple times to King Ten.
- \$ Maternally Superior.** His female progeny's record of udder excellence is known far and wide. Additionally, he still ranks as a breed trait-leader for milk ability even in the most recent 2012 Sire Report.

\$ Blend Ability. Another outstanding feature of King Ten is his offspring's unique quality of "nicking" wonderfully well on so many of any era's other dominate sires.

\$ Carcass Premiums. Not only a superior producer of quality females, King Ten remains a marbling icon even today. While most of his contemporaries have negative carcass data, he still dominates with a current value placing him in the top 1% of the breed!

\$ Moderation Science. A proven calving ease sire that ranks as a 2012 trait leader for lower mature cow size — his progeny offers more mating options than any other with abundant style and class.

Where can you find
the best opportunity to tap into this genetic gold mine?

The Desert★Mart "Best Heterosis Possible" SALE!
November 15, 2012

Selling 70 Bulls and 50 Females. Most will trace several times to the immortal KING TEN!



LARGENT AND SONS

Hereford cattle since 1902

P.O.Box 66

Mark & Cathy: 307-738-2443
Mark's cell: 307-267-3229

Kaycee, WY 82639

Fax: 307-738-2297
Dave's cell: 307-267-4491

10 miles south of I-25

e-mail: largentandsons@yahoo.com • website: www.largentandsons.com



Selling 140 Hereford Bulls



**Lunch at 11:00
Sale at Noon**

DUDLEY BROS.
REGISTERED  HEREFORDS
51st Annual Bull Sale
October 11, 2012

SUPERIOR

Productions
RFD TV
DISC Network 284
DIRECTV 805
 Sale to be
 broadcast live
 on RFD TV.



Call for more information

DUDLEY BROS.

Box 10 • Comanche, Texas 76442

John: 325-356-3767
325-642-0745 • Mobile

Tom: 325-356-3918
325-642-0748 • Mobile

Office: 325-356-2284
Fax: 325-356-3185

Email: dudleybros@comanchetx.com
www.dudleybros.com