

TEXAS HEREFORD

The Official Publication of the Texas Hereford Association

January 2016



Rockin 4H Ranch Inc.

A Breeding Plan That Produces Quality Consistent Results!!!

R4HR GVCMR156T FULLBACK Y471ET

P43215025 — Calved: March 18, 2011 — Tattoo: BE Y471

PW VICTOR BOOMER P606 (SOD)(DLF,HYF,IEF)
CMR GVP MR MATERNAL 156T (DLF,HYF,IEF)
P42830222 JG WCN VICTRA 17 2103

REMITALL BOOMER 46B (SOD,CHB)(DLF,HYF,IEF)
PW VICTORIA 964 8114 (DLF,HYF,IEF)
MHF VICTOR R125 17
MHF MS VIC A51 567

REMITALL ONLINE 122L (SOD,CHB)(DLF,HYF,IEF)
WSF ONLINE VICTORIA 351 ET (DLF,HYF,IEF)
P42446944 WSF VICTOR LADY 869

REMITALL EMBRACER 8E (SOD,CHB)(HYF)
REMITALL CATALINA 24H
NJW WSF MCC WRANGLER 3E
WSF MISS VIC K1205P 94T (DOD)

CE -0.4 (P); BW 2.2 (.23);
WW 55 (.22); YW 80 (.22);
MM 26 (.14); M&G 53;
MCE 3.3 (P); MCW 92 (.17);
SC 1.0 (.08); FAT 0.019 (.20);
REA 0.45 (.19);
MARB 0.08 (.17); BMI\$ 19;
CEZ\$ 15; BII\$ 16; CHB\$ 25

R4HR MH High Plains 4037 0017 ET

Sire: THM Durango 4037
Dam: CRR 279R Julianne 827

R4HR GVCMR P606 Tradition A258

Sire: PW Victor Boomer P606
Dam: Star Ogin Holly 526P ET

R4HR KE Vintage P606 8062 ET

Sire: PW Victor Boomer P606
Dam: BTF 5015 9146

R4HRGVCMR P606 Ambassador Z118

Sire: PW Victor Boomer P606
Dam: Star Cowgirl 183P

R4HR THF Logic 023R J838

Sire: KJ C&L J119 Logic 023R ET
Dam: THF Victoria 46B J630

R4HR 6056 Bright Solution 2102

Sire: THM Solution 6056
Dam: GSC Brighty 533P U3

THM R4HR TL's Sonny 0758

Sire: THM 163M Marcel 7540
Dam: THM TL's Sunkist 6120

GV CMR 430 MR 2532 Y128 ET

Sire: CMR TF 242 Garrett 430
Dam: AB 2532 Lassie 8006
6008 ET

R4HR GV CMR 110K Max Y496 ET

Sire: Golden-Oak 4J Maxium 28M
Dam: Remitall Marvel ET 110K



Dale and Donna Hester
4800 VZCR 2120, Canton, TX 75103
903-340-5006 Cell

**Offering 50+
replacement heifers
and 25+ ready to work
bulls at all times.**

Producing Time Tested Genetics... Every Hour... Every Day

Wishing all
our future
customers
a prosperous
year ahead



AHA Golden Hereford Breeder

Herefords Since 1959

CURTIS YOUNTS & SON

Cell: 254/760-0243 • Res: 254/939-6492
3648 Elmer King Rd. • Belton, TX 76513

TEXAS HEREFORD

Official publication of the Texas Hereford Association

January 2016 • Vol. 65, No. 3

Mission Statement

The Texas Hereford Association will provide the leadership to unite, foster and protect the interest of the Hereford breed; and promote fairly the production and consumption of Hereford beef universally.

Features

- 36 Honorary Members
Dale and Mary Barber
- 36 Honorary Member
John Mehaffey
- 37 2016 National Hereford Show Honoree
James M. Walker – W4 Ranch
- 38 Booster of the Year
Cory Goswick
- 38 Friend of THA
Joel Cowley
- 39 2015 Western Nugget National Hereford Show
Show Results
- 43 Sale Reports

Departments

- 4 Bulletin Board
- 6 Tailgate Talk
- 44 TJHA News
- 44 Auxiliary News
- 51 Calendar of Events
- 52 Cattle for Sale
- 52 Advertisers Index

On The Cover

Hereford bulls enjoyed tremendous demand in our recent production sales. These herd bulls sold at the recent Barber Ranch Annual Bull Sale. *Photo by Lyn Chastain*

THE TEXAS HEREFORD (ISSN 0744-4761) (USPS 616-680) is published monthly except for the month of July by the Texas Hereford Association. POSTMASTER: Please send change of address notices to The Texas Hereford, 4609 Airport Frwy., Ft. Worth, TX 76117. Periodical postage paid at Ft. Worth, TX, and additional mailing offices. Subscription rate: One Year, \$15.00. Advertising rates on request. Contributions to the editorial pages are welcome, but the magazine cannot be responsible for the return of unsolicited material.

Texas Hereford Association Officers
Gary Buchholz, Waxahachie, president
Chad Breeding, Miami, president-elect
Terri Barber, Channing, vice-president
John Winsauer, Beeville, vice-president
Curtis Younts, Jr., Belton, vice-president
Jack Chastain, Fort Worth, secretary-treasurer
Jay Wright, Morgan, past-president

Executive Committee

Pete Case, Eldorado
Matt Copeland, Nara Visa, NM
Paul Funk, Copperas Cove
Larry Johnson, Abilene
Joe Dan Ledbetter, Wheeler

Directors

George Beggs IV, Fort Worth
David Carver, Cotton Center
Matt Copeland, Nara Visa, NM
Justin Dauer, Panhandle
Mike Doyle, Wolfe City
Bill Dufur, Caddo, OK
Crawford Edwards, Tahoka
Jo Ellard, Dallas
Paul Funk, Copperas Cove
David Harbour, Stinnett
Lee Haygood, Canadian
Tye Jackson, Ranger
Watson Langford, Okmulgee, OK
Joe Dan Ledbetter, Wheeler
Tommy Malone, Wills Point
Clay Richardson, Ozona
Roy Shackelford, Comanche
Glenn Springer, Aspermont
James Strode, Paluxy
Jim White III, Marfa
Pete Case, Eldorado
Tom Echols, Breckenridge
Clay Furlong, Kent
Jordan Glaze, Gilmer
Kevin Hartley, Madisonville
Weldon Hawley, Vernon
Larry Johnson, Abilene
Larry Karrh, Boerne
Chris Lacy, Ft. Davis
Bill McInnis, May
Bobby McKnight, Ft. Davis
Sam Massey, Wickett
Steven Noack, Rockdale
Scott Nolan, Gilmer
Kyle Perez, Nara Visa, NM
Keith Rogers, Hamilton
Wilson Scaling, Henrietta
Chris Scharbauer, Amarillo
Lloyd Whitehead, Ft. McKavett
Herb Williams, Decatur
Swaze Brainard, Pampa
James Dangelmayr, Muenster
Cory Goswick, Canton
Clyde Henson, Kermit
Walter Knight, Era
Steve Lesley, Stephenville
Ward Locklear, Brownwood
Hadley Mann, Lubbock
John Mehaffey, Burleson
Brady Mimms, Lorenzo
Jon David Moore, Hamlin
Jane Murphey, Meridian
Dan Nance, Haslet
Jackie Pullen, Rockwall
Alan Ricketson, Dalhart
Gary Schneider, Aquilla
Dwight Sexton, Cost
Thomas Smith, Gatesville
Arthur Uhl, San Antonio
Jay West, Channing

TEXAS HEREFORD

4609 Airport Freeway • Fort Worth, TX 76117
www.texashereford.org
817/831-3161 • Fax: 817/831-3162
texashereford@sbcglobal.net
Jack Chastain, *Manager/Editor*
Penni Hiles, *Assistant Editor & Circulation*
Park Place Enterprises, *Design*
Lee Chastain, *Photo Production*

AFFILIATED WITH

LPC – Livestock Publications Council
National Cattlemen's Beef Association
American Hereford Association
Texas & Southwestern Cattle Raisers Association
Texas Purebred Cattle Alliance

Consistency year after year



GKB 212 *Lady Advance* 106C

Reg. # 43621092 | DOB: 4/1/2015
Sire: GKB PRCC 88X Waco 212 ET
Dam: C GKB R111 Lady Advance 1225 ET
SELLING FULL POSSESSION



GKB EJE *88X Ribeye* 317B

Reg. # 4356948 | DOB: 9/26/2014
Sire: NJW 98S R117 Ribeye 88X ET
Dam: GKB EJE New Era Breeze B176 ET
SELLING FULL POSSESSION

Selling

Cowtown Invitational Sale
Will Rogers West Arena - Fort Worth, TX
January 31, 2016 - 3PM



GARY & KATHY BUCHHOLZ

P.O. Box 2807 :: Waxahachie, TX 75168
Gary Cell: 214-537-1285 :: Kathy Cell: 214-537-1306
Email: gary@gkbcattle.com :: Web: gkbcattle.com
Herdsmen: Jay Creamer 254-707-2199 :: Operations: Matt Eskew 479-721-9883



Judges Selected for 2016 Southwestern Exposition & Livestock Show

Junior Heifers – Watt Arena, West Ring:

Mr. Chris Cassidy, Urbana, IL
 Polled Hereford: Saturday, Jan. 23, at 1:00 p.m.
 Hereford: Saturday, Jan. 23, following
 Polled Hereford

Pen of 10 Commercial Hereford Heifers – Pen Area/Richardson Bass Bldg.

Charnel Bailey, Leesville, LA
 Bill Cawley, Crockett, TX
 Brandon Cutrer, Wharton, TX
 Saturday, Jan. 30, at 9:00 a.m.

National Hereford and Polled Hereford Shows – Watt Arena

Randy Daniel, Colbert, GA
 Monday, Feb. 1, at 8:00 a.m.
 (classes to be judged concurrently in an alternating format)

Junior Hereford and Polled Hereford Steers – Watt Arena

Dr. Dan Shike, Sadorus, IL
 Thursday, Feb. 4, at 8:00 a.m. following Angus

West Texas Scholarship Info

Information, criteria and scholarship application regarding the West Texas Hereford Association Curly Hays Memorial Scholarship can be obtained on-line at www.cfabilene.org under scholarships and then finding West Texas Hereford Association Curly Hays Memorial Scholarship. The deadline for the scholarship is April 1, 2016. If applicants have questions or are unable to obtain on-line call Twalla Simmons at 325-669-1692 and the information will be mailed. ★

THA Scholarships

The Foundation of the Texas Hereford Association will award \$1,500 scholarships to qualifying high school seniors and college freshmen. You may call the THA office to obtain

information or go to www.texasheford.org and click on the youth link for THA Foundation scholarship requirements and instructions. Deadline for applying is January 1, 2016. The awards will be presented at the THA Annual meeting in Fort Worth, January 30, 2016. The THA's number is 817-831-3161. ★

Hereford Weekend

Mark your calendars for Hereford Weekend at the Southwestern Exposition and Livestock Show in Fort Worth.

THA Annual Meeting,
 Botanic Garden Center
 January 30, 2016

47th Annual Whiteface
 Replacement Female Sale
 January 31, 2016

Cowtown Invitational Sale
 January 31, 2016

National Hereford Show
 February 1, 2016

Attention Juniors: \$5,000 for Top Jr. in Fort Worth National Show

Funds have been committed to award \$5,000 to the top placing junior heifer and \$2,500 to second place junior heifer (if funds permit) that is exhibited at the National Hereford Show in Fort Worth. A second scholarship will be awarded if \$5,000 is exceeded. Exhibitor must be at the halter of his/her own heifer as well as be eligible to show in the junior show the previous week. To be eligible for the junior show, the ownership must be in only the exhibitors' name, no siblings or partners. See rule 12 on page 192 of the Fort Worth Stock Show premium book. The heifer must be eligible to show for Grand Champion (no Cow/Calf). This is an incentive to encourage junior exhibitors to exhibit at the open show on

February 1, 2016. To be eligible for the award, the exhibitor must enter the open show by the November 15th deadline. The exhibitor must be a member of the Texas Junior Hereford Association.

The sponsors of this award are committed to making this an annual event and hope to grow the fund to increase the prize as well as create a special belt buckle for the event. Anyone wishing to join this effort should contact Jack Chastain at the THA office. ★

Make Your Denver 2016 Plans Today

Plan now to attend the Hereford activities during the 2016 National Western Stock Show (NWSS) in Denver Jan. 14-16.

Renaissance Denver Hotel, 3801 Quebec St., Denver, CO 80207; 800-468-3571; Rate: \$112. Ask for the "American Hereford Association" block. The hotel offers a free shuttle to and from the Denver International Airport and the NWSS.

Drury Inn & Suites Denver, Stapleton 4550 North Central Park Blvd., Stapleton, CO 80238; Rate: \$104.99. Reservations can be made online at www.druryhotels.com, enter Group number 2236607, or call 1-800-325-0720 and refer to the group number 2236607. ★

THA Nominating Committee Selected

THA President Gary Buchholz has appointed the nominating committee to recommend officers and directors for 2016. Jay Wright will serve as chairman with committee members Steve Coates and Scott Nolan. ★



Line One Cattle ... at their best!



Some of our brood cows getting ready to calve in January and February 2016.

Visitors Welcome!

EDGAR RANCH
Bobby and Agatha • P.O. Box 68 • Blanket, TX 76432
(254) 842-6047 home • cell: (325) 642-2651
e-mail: abedgar@cctc.net

What a year 2015 proved to be for Texas Hereford Association. Early year cattle prices were off the charts. Range conditions improved but moisture and water are still critical in parts of this state and a lot of the western USA. Our Hereford cattle continue to gain acceptability as more and more cattlemen realize what our breed has to offer. The Hereford cow is our rock of strength. We must build from this. Our bulls continue to make an impact with the number of calves they can sire as well as the pounds and quality they breed. As we

strive to use sires with more muscle, REA and IMF epd's; we will continue to increase market share of the bull trade. We must get more aggressive and effective in promoting our breed and our product. We must do a better job of developing and selling our cattle.

This issue is full of activities and opportunities for Hereford breeders and enthusiasts. Your staff and executive committee have planned a few new activities for the upcoming year. We will be back at the Fort Worth Botanic Garden for our


annual meeting. Our forty-seventh annual replacement female sale and Cowtown Invitational sale have excellent offerings. We need your presence and participation for these events to be successful. We have exciting plans to expand our October sale in Buffalo. We need to grow our female consignments. Our executive committee solicits your input on activities that would make you more proud to be a member of this organization. If you want to contribute time and ideas, contact myself, President Gary Buchholz, president-elect Chad Breeding or any member of the executive committee or this years nominating committee. Your help, ideas and contributions are most appreciated. We need more participation from more members. Specifically we need your attendance at Hereford events. Success is generally measured by size of the crowd. Next we need more participation in advertising in our publication. More ads allow us more editorial and both will enhance Herefords and THA. We have been able to print the entire magazine in color every month since January 2013. We put our magazine on our website when we send it to the printer. Our goal is to provide you as members an affordable means to promote your cattle. Our "For Sale" section has proven to be very successful in helping members sell cattle as well as buyers find cattle. We have been posting announcements and results on Facebook. We have over 3250 persons following us on Facebook and have reached over 9000 contacts with our postings.

I extend a plea to all members who do not have a business card ad in the magazine to place one this year. The cost is slightly more than \$250 per year. We need your help in keeping enough ads to keep our rates at present fees. Every director should have a card ad. We also need more members to balance our operating budget. If each current member adds a customer, friend or neighbor as a member, our membership will double. We added over 50 new members in 2015. We have a goal of over 500 for 2016. We have managed to operate on a very lean budget the past few years but there are many more ways we can promote Herefords with a few more dollars in our budget..


As 2016 progresses, I hope to see more of our members at Hereford events. I hope you encourage a friend or neighbor to come along and become active in our association. January is a busy month, but there is something to do every month. Watch our magazine, our web site and our Facebook page for more exciting events in the planning stages for this year. Together we can make Herefords reign Supreme not only in Texas but across the USA. ★

McMullin Ranch

When bulls like this **HEREFORD**
are crossed on black cows...



...the results are great
heifers like these!



SEE US FOR YOUR **HEREFORD BULLS!**

MC

McMullin Ranch

Donlie and Linda McMullin
1005 Perryman Creek Rd.
Copperas Cove, TX 76522
254-547-0172 • dboydmc@yahoo.com




You are invited ...

We invite all Texas Hereford members, auxiliary and juniors and all other Hereford enthusiasts to attend the annual meeting of THA.

The Texas Hereford Auxiliary Luncheon will be held at 12 Noon in the **Azalea Room of the Botanic Garden.**

The THA annual meeting will be at the **Botanic Garden Center**, 3220 Botanic Garden Blvd., Fort Worth at **3:00 p.m.**, in the lecture hall with a social to follow in Oak Hall from **5:00-7:00 p.m.**

The Botanic Garden Center is located approximately 1½ miles west of downtown Fort Worth at the intersection of Interstate 30 and University Drive. Take the University exit and turn north. The Garden has two entrances on your left. The Garden Center is located at the second entrance. 

THA *Annual Meeting*

Saturday, January 30, 2016

Meeting 3:00 p.m.

Social 5:00-7:00 p.m.

Silent auction

*Reception to honor Show Honoree
James Walker / W4 Ranch*



MW Hereford Ranch



*The Hassle-Free Source
for Hereford Cattle*

- ✓ **Spring Sale.** We feed the bulls during the winter, freeing your pasture, time, and money.



31st ANNUAL PRODUCTION SALE Saturday, April 2, 2016

Cattle on display by 10 AM
Lunch served at 12 Noon
Sale 1PM at the ranch
17 miles south of Brownwood on FM 45



SELLING:

- 50 Two-Year-Old Bulls
- 50 Open Hereford Heifers

- ✓ **Central Location.** With the *geographical center of Texas* only 13 miles away, we're close to everyone.



- ✓ **Guarantee.** We absolutely guarantee our cattle. If you are not completely satisfied, we will make it right!

- ✓ **Strategic Planning.** We aren't afraid to spend big bucks when we spot an industry changer. Our bold move several years ago to purchase IMR Patriot 3113 3ET has allowed us to move our cowherd to the forefront of the industry. His daughters are truly impressive with beautiful udders, feminine profiles, and the ability to wean heavy calves under severe drought conditions. 3113's EPD numbers continue to climb when other bulls' numbers often decline as daughters enter production. We've shared a few of his females in previous sales and they are always crowd favorites.



The Locklear's MW Hereford Ranch
P. O. Box 1754 • Brownwood, Texas 76804
325-646-0956 (res.) or 325-646-5501 (ofc.)
Mopsy, Ward, Travis, Jami, Benjamin and Daxton,
Chad, Elizabeth, Steve, Connor, Paige, Ashia & Brenna

Our Consignments to Fort Worth for the January 31, 2016

FT. WORTH NATIONAL COWTOWN Invitational Sale HEREFORD and POLLED HEREFORDS



L1 DOMINO 03396 [CHB,SOD,DLF,IEF]
 CL 1 DOMINO 637S 1ET [CHB]
 CL 1 DOMINETTE 118L
 CL 1 DOMINO 955W [CHB,DLF,HYF,IEF]
 CL 1 DOMINETTE 5152R [DLF,HYF,IEF]
W4 955W LADY C009 • 43635709 • 02/26/2015
 GO L18 EXCEL T31 [CHB,DLF,HYF,IEF]
 CRR HELTON 980 [CHB,DLF,HYF,IEF]
 CRR 9B JULIANNE 405 [DLF,HYF,IEF]
 CHURCHILL LADY 2100Z
 CHURCHILL PLAYER 3140 [DLF,IEF]
 CHURCHILL LADY 8166U
 CHURCHILL LADY 3149 ET

CED	BW	WW	YW	MILK	M&G	CEM	MCW	US
-1.9	+6.0	+64	+106	+31	+64	-1.4	+111	+1.21
TS	SC	FAT	REA	MARB	BMI	CEZ	BII	CHB
+1.16	+1.1	0.000	+0.35	+0.12	+\$16	+\$11	+\$13	+\$31

GOLDEN-OAK FUSION 3S [DLF,HYF,IEF]
 GOLDEN OAK OUTCROSS 18U [CHB,DLF,HYF,IEF]
 GOLDEN-OAK 60D MALLORY 15M
 H W4 GRIZZLY 0146 ET [DLF,HYF,IEF]
 C -S PURE GOLD 98170 [CHB,SOD,DLF,HYF,IEF]
 C MS PURE GOLD 2003 [DLF,HYF,IEF]
 C 8403 MS ACHV 96047
W4 BEAR CAT 108C • P43635743 • 05/02/2015
 BR MOLER ET [CHB,DLF,IEF]
 GKB DOWNTOWN B627 ET [DLF,HYF,IEF]
 GKB MISS PURE GOLD B239 ET [DLF,HYF,IEF]
 W4 627 DOMINETTE W493 ET [DLF,HYF,IEF]
 BR DM KEY DOMINO 0174 [DLF,IEF]
 BR 74 ALAINNA 3113
 BR DOMINETTE 0013

CED	BW	WW	YW	MILK	M&G	CEM	MCW	US
-0.8	+4.1	+52	+88	+28	+54	+0.8	+115	+1.07
TS	SC	FAT	REA	MARB	BMI	CEZ	BII	CHB
+1.09	+0.9	-0.024	+0.71	+0.06	+\$17	+\$13	+\$15	+\$28

Our consignments to the
**47th Annual Premium Whiteface
 Replacement Heifer Sale • 1PM**

- 1 Pen - Spring 2014 Hereford Bred Heifers bred to Hereford bull to calve after 2-1-16
- 1 Pen Spring 2014 Open Black Baldy Heifers selling exposed to Hereford bulls after 12-9-15
- 1 Pen Fall 2013 Bred Heifers and some will have Brangus-sired calves at side by sale day

SAVE THE DATE!
 Our Spring Bull Sale date is March 5, 2016.
 We'll sell 60 Breeding Age Bulls and 200 Females.



Registered Herefords and Certified F-1s
 Bosque County, Since 1961
 Office 254-635-4444
 Jeff Chaffin, Ranch Manager • cell 254-396-2785
 e-mail: jeff@w4ranch.com
 P.O. Box 9 • Morgan, Texas 76671
 James, Joe & Joey Walker



3H RANCH

Building a Strong Foundation for our Hereford and Black Hereford Herds



Purchased from Iron Lake Ranch.
Herd sire for our Hereford and Black Hereford cattle.
Semen Available

ILR Hometown 1408 ET

9/15/14
by NJW 73S W18 Hometown 10Y ET
Homozygous Polled

BW 2.4 WW 62 YW 107 MM 29
M&G 60 REA .64 Marb .33 CHB \$37

These heifer calves were recently purchased from Churchill Cattle Co. along with several other top prospects.



Churchill Lady 5201C
Sire: Full Throttle
Dam: Churchill Lady 1152Y
by Golden Oak Outcross 18U



Churchill Lady 0117X
Sire: Golden Oak Outcross 18U
Dam: Churchill Lady 4147
by KCF Bennett H142 L127



Churchill JR Lady 5176C
Sire: Full Throttle
Dam: Churchill Lady 182Y
by Golden Oak Outcross 18U

Selling 50-70 Calves in 2016



Matt Hughes - Ranch Operations Mgr
(318) 317-8696 / matt@3hranch.net
1830 FM 9 N, Waskom, TX 75692

3hranch.net

Largest Black Hereford Sale Ever!



Saturday, March 12, 2016

Ellis Co. Youth Center, Waxahachie, Texas

Selling: **70 Bulls** (Breeding Age)

Nobody has ever offered this many Black Hereford bulls in one sale. *Commercial breeders come buy a load!*

and **70+ Heifers** – Open and Bred

See videos online the first week of February at www.thelivestocklink.com or www.TripleLBlackHerefords.com

For a catalog or more information contact:

TRIPLE L RANCH

BOBBY & JARED LIDE
714 FM 1366
Mexia, TX 76667
Ranch: 254/739-5311
Bobby (cell): 254/625-3800
Jared (cell): 254/625-3806



wbha
World Black Hereford Association
Founding Member
of the World Black
Hereford Association

We cover the states of Texas and Oklahoma.

We are one of the top marketers of farm and ranch land, with over 20 years of experience. Our well regarded reputation in the market and our extensive contacts benefit you in many ways. Our vast experience in selling working cattle and horse ranches as well as hunting and recreational properties and producing farms has made us a market leader.

Our agents know and offer you access to the best appraisers, farm and ranch lenders and surveyors.

We create attractive, detailed brochures which are distributed to brokers and prospective buyers.

We continually formulate innovative methods and techniques to maximize exposure of our property. Since 1983 we have invested over \$1,250,000 in media placement.

Everyone in our organization takes pride in our professional service. We provide you with prompt responses to your questions and guard your confidentiality.

When you decide to sell, call us. You'll be glad you did!



"Country Living" acreage with homes, stables or other improvements.

Representing buyers and sellers of farms, cattle & horse ranches.

Unmatched Performance Since 1983

DONLIE McMULLIN REALTY

Phone: 254-547-0172 • Fax 254-542-1489

Toll Free: 1-800-200-8966

202 S. 1st Street • P.O. Box 794

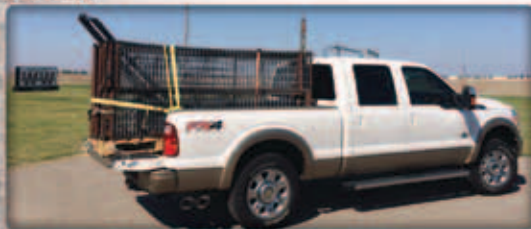
Copperas Cove, TX 76522

e-mail: donliemcmullin@earthlink.net



RESEARCH DRIVEN SOLUTION TO EFFECTIVE WILD HOG CONTROL

Portable



Trap can easily be transported and set up in 30 minutes or less.

Fully Suspended Trap



Minimal ground level obstruction. Hogs do not become trap shy.

Remote Human-Activated



Sophisticated sensors and camera systems to alert user through their smartphone.

Solid Construction



Remove captured hogs at your convenience.

www.BoarBuster.com | 800.999.1214

Exclusively Marketed
& Manufactured By:



MESSNER RANCH

SATURDAY, FEB. 6, 2016 • 12:30 (CST)

150 Hereford & Angus Bulls • 75 Hereford & Angus Females



M 222 ADVANCE 513C
 43576318 • Calved: Jan. 09, 2015
 Sire: M 6098 Advance 222Z
 MGS: CL 1 Domino 091X

CE	BW	WW	YW	MM	REA	MARB	CHB\$
1.2	2.9	51	85	24	0.45	0.02	24



M 091 DOMINO 565C
 43573086 • Calved: Jan. 12, 2015
 Sire: CL 1 Domino 091X
 MGS: HH Advance 6098S ET

CE	BW	WW	YW	MM	REA	MARB	CHB\$
1.6	1.7	53	81	29	0.43	0.02	25



M 2267 ADVANCE 5179
 43578784 • Calved: March 06, 2015
 Sire: HH Advance 2267Z ET
 MGS: CL 1 Domino 9113J

CE	BW	WW	YW	MM	REA	MARB	CHB\$
0.7	2.6	57	93	24	0.44	0.08	27



M 993 DOMINO 4220B
 43483471 • Calved: March 10, 2014
 Sire: CL 1 Domino 993W
 MGS: DS Beef 9059

CE	BW	WW	YW	MM	REA	MARB	CHB\$
2.6	3.0	49	96	27	0.46	0.03	26

HEREFORD HERD SIRES:

- CL 1 DOMINO 869J [CHB] [DLF,HYF,IEF]
 BW 1.6 / WW 52 / YW 88 / MM 28 / REA 0.55 / MARB 0.10
- CL 1 DOMINO 091X [CHB] [DLF,HYF,IEF]
 BW 1.8 / WW 57 / YW 90 / MM 36 / REA 0.37 / MARB -0.01
- HH ADVANCE 2267Z [DLF,HYF,IEF]
 BW 2.0 / WW 57 / YW 90 / MM 33 / REA 0.75 / MARB -0.03
- L1 DOMINO 06576 [CHB] [DLF,HYF,IEF]
 BW 1.6 / WW 45 / YW 83 / MM 17 / REA 0.30 / MARB 0.19
- CL 1 DOMINO 993W [DLF,HYF,IEF]
 BW 1.9 / WW 45 / YW 82 / MM 37 / REA 0.17 / MARB 0.00

ANGUS HERD SIRES:

- CONNEALY CONSENSUS 014E
 BW 0.3 / WW 66 / YW 105 / MM 13 / REA 1.05 / MARB 0.61
- CONNEALY 044 062
 BW 1.0 / WW 73 / YW 129 / MM 26 / REA 0.39 / MARB 0.09
- SITZ UPWARD 472T
 BW -0.60 / WW 55 / YW 99 / MM 36 / REA 0.43 / MARB 0.78
- SITZ WISDOM 723B
 BW 1.0 / WW 52 / YW 103 / MM 29 / REA 0.55 / MARB 0.78
- CONNEALY IF 4925 4375
 BW 1.0 / WW 70 / YW 122 / MM 28 / REA 0.71 / MARB 0.71



MESSNER HEREFORDS

Rt. 1, Box 350 • Laverne, OK 73848
 Milton 580-273-9494 • Van 580-552-1555
 van1messner@gmail.com





South Texas

HEREFORD ASSOCIATION

spring sale

OFFERING Hereford bulls & females, true F1 females & Registered Brahman bulls & females

Saturday, February 6th at 11 am

Beeville Livestock Commission, Inc. | 2218 US Hwy 59E Beeville, TX

FOR SALE INFORMATION CONTACT :

Robbie Morish - Secretary [361.920.0012 · info@southtexashereford.org] Leo Casas, III - Auctioneer
Sale catalog will be available online in late January · Sale order will be posted after 5pm on Friday, Feb. 5th

WWW.SOUTHTEXASHEREFORD.ORG 

Upstream Ranch **UPS**

Annual Production Sale
February 6, 2016

Saturday • 12:30 CST at the Ranch

SELLING

325 Horned & Polled Hereford Bulls

Including 175 Coming 2-Year-Olds & 150 Fall Yearlings

SELLING

50 Bred Heifers



4190	
BW	+4.1
WW	+62
YW	+113
MILK	+26
M&G	+57
REA	+0.76
MARB	+0.25



4298	
BW	+2.6
WW	+53
YW	+86
MILK	+24
M&G	+50
REA	+0.53
MARB	+0.27



4386	
BW	+2
WW	+52
YW	+81
MILK	+30
M&G	+56
REA	+0.38
MARB	+0.42



4507	
BW	+4.6
WW	+65
YW	+99
MILK	+29
M&G	+61
REA	+0.61
MARB	+0.21



4562	
BW	+5.1
WW	+60
YW	+99
MILK	+31
M&G	+61
REA	+0.5
MARB	+0.24



4700	
BW	+3.1
WW	+72
YW	+116
MILK	+31
M&G	+67
REA	+0.56
MARB	+0.3

Go to UpstreamCattle.com for videos and sale catalog.

Upstream Ranch **UPS**

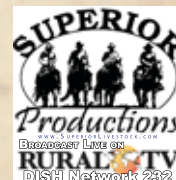
Hereford cattle bred and developed in the Nebraska Sandhills

Brent & Robin Meeks

Home 308-942-3195 • Cell 308-214-0719

e-mail: upstreamranch@gmail.com

45060 Upstream Rd. • Taylor, NE 68879

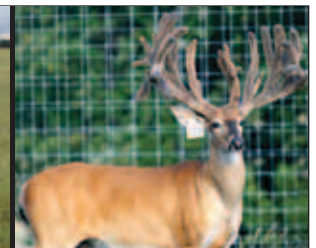


Cox Concrete Products

Are you tired of replacing metal, wooden and plastic troughs?



800-458-3072 / 903-572-5902
4477 E. Hwy. 67 • Mt. Pleasant, TX
www.coxconcrete.com



Serving the Cattle & Deer Industry

Bovine Services

- Mobile lab for full service on-farm ET and IVF
- State-of-the-art bovine ET and IVF center in Ranger, Texas
- Traditional flushes and *in vitro* services
- Excellent management and staff to care for your donors, recipis, and AI cows
- Offering 90-day bred recipients or weaned calves from cooperator recipient herds
- Reproductive ultrasonography and fetal sex
- Serving Texas and surrounding area

Deer and Small Ruminant Services

- State-of-the-art mobile facility for embryo transfer and laparoscopic AI services
- Convenient embryo freezing for legal interstate trade and transfer of valuable genetics
- Over 1200 whitetail donors collected

Since 2008



www.hoofstockgenetics.com

817.565.7094

Midcontinent Livestock Supplements Forage Enhancing Program

Recondition the cows after weaning.

MLS #1 SUPPLE-LIX
All natural protein tub with high vitamin and trace minerals levels for cattle needing both protein and minerals on roughage diets.

Get calves off to the right start.

MLS #5 STRESS
An all natural protein, energy, vitamin, and trace mineral tub for young cattle during weaning, shipping, or stress. Has Availa®4 from Zinpro®

www.mlstubs.com



Kyle Latham---254-715-2162

RED CHAIN FEEDS



With over 45 years of operation, we have the experience and the expertise to create the perfect feeding solution for your cattle operation. We offer a diverse group of high quality feeds and have the ability to custom formulate feeds to fit your specific needs.



GORMAN MILLING COMPANY, INC
Gorman, Texas | (800) 588-2252

REDCHAINFEEDS.COM

Colyer

HEREFORDS
ANGUS

36th ANNUAL PRODUCTION SALE
MONDAY, FEBRUARY 22, 2016
AT THE RANCH—BRUNEAU, IDAHO

“BEST OF THE BEST”

236 Head Sell • 140 HEREFORD BULLS • 60 ANGUS BULLS
INCLUDES TWO YEAR OLDS, JUNIOR AND SENIOR BULLS • Complete performance data including EPDs, Pelvic and Scrotal Measurement, Ultrasound and Carcass Data
36 Hereford Heifers • Sale catalog is available on our website www.hereford.com

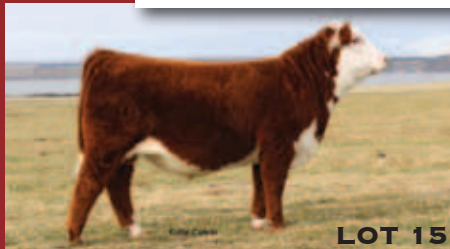
Special Attraction: Selling the right to flush of your pick of our entire first calf heifers. Numerous daughters of Miles McKee, Stockman, 88X, Trust, Hometown 10Y will be available to flush to the bull of your choice!



LOT 1

Lot 1 - C 092X MILES 5001 ET

BW 3.6 WW 56 YW 78 MILK 35 IMF 0.06 URE 0.65
This is a big stout son of “Miles” who has added performance and look. If he was not born in December he would definitely be part of our pen of bulls going to Denver. His full brother will be one of the more popular bulls in the sale and was a division champion in Reno. This bull will be one of the heaviest in terms of WDA and is definite top pick. M&G Top 1%



LOT 15

Lot 15 - C MILES 5034 ET

BW 3.6 WW 56 YW 78 MILK 35 IMF 0.06 URE 0.65
This is one of the very best bulls in the 2015 crop. He has been a standout all along and has done nothing but get better with age. He was recently named Junior Bull Calf Champion in Reno and will be part of our Denver pen bulls. This bull has so much look and style but still has a tremendous amount of power and performance. Top 1% Milk and M&G Top 10% REA



LOT 26

Lot 26 - C 88X RIBEYE 5072

BW 3.3 WW 62 YW 94 MILK 28 IMF 0.08 URE 0.43
This was the heaviest natural bull calf weaned this season. He is a dark red son of “88X” who quickly made his way to the top cut of bulls. He will be a member of our pen of three in Denver because of his total power and performance. His full sister was the top selling heifer in the 2013 fall female sale to Castles in Oklahoma who went on to be named Reserve Grand Champion Female in the Junior Show at Denver. Top 5% WW and M&G



LOT 42

Lot 42 - C MILES 5127

BW 0.7 WW 40 YW 59 MILK 28 IMF 0.09 URE 0.46
We sorted this calf into the top pen because he is so complete. You will spend a long time trying to find a major flaw in this one. He is deep sided, long fronted and has tremendous rib shape. Top 10% BW and Top 15% Milk.



LOT 54

Lot 54 - C BLACK HAWK DOWN ET

BW 3.2 WW 63 YW 94 MILK 28 IMF 0.09 URE 0.47
This is one of the very best combination sires in the entire sale. He went with us to Reno and was named the Junior Bull Calf Champion. Many purebred and faithful commercial customers will appreciate this calf for being not only one of the top bulls in the sale but also something they can use on nearly all of their cows because of the way he is bred. This flush was mostly heifers and his sisters were the main attraction at this year's fall female sale. This calf has an interesting story behind him. Top 5% WW and M&G, Top 15% YLG and CHB



LOT 60

Lot 60 - C 2052 4003 VIC 5192 ET

BW 2.9 WW 56 YW 88 MILK 27 IMF 0.25 URE 0.45
This will be one of the top picks in this group of bulls. Here is a son of “4003” who is a new sire for us out of arguably the best “88X” daughters we have. Her genetics have already been some of the most popular we have and will continue to gain respect every year after. We are excited to get another big group of calves by her again this spring. This bull is unique in the way he is made. Extremely long and balanced and blends smooth from end to end. We love his hip structure and added extension to his front third. He will be a member of our pen of three bulls in Denver.



LOT 85

Lot 85 - C X142 STOCKMAN 5261 ET

BW 4.1 WW 54 YW 84 MILK 30 IMF 0.09 URE 0.58
This calf has been a standout all along and has done nothing but get better. We feel this is one of the best made calves we have raised in a while. He reminds us a lot of his uncle “Miles.” Great big square hip and a killer hind leg. He is great fronted and has a ton of shape to his rib. His mother is just starting in our donor program and this bull calf will be hard to top. She has a big hip and great neck as well. He is one that could go any direction. Whether you want to breed for commercial bulls, steer or show heifers he should be able to cover those bases. And with the maternal side of his pedigree we would expect his daughters to be nothing less than perfect. Top 10% for Milk and REA



LOT 99

Lot 99 - C R98 COPPER 5321 ET

BW 4.8 WW 63 YW 96 MILK 24 IMF 0.17 URE 0.35
Lot 97 and 99 are out of a new sire “120Y” and “R98.” Both of these bulls have tons of style and eye appeal. They are great fronted and look like the kind that could produce a killer show heifer. We feel these 2 brothers are the kind that after you get your first calves on the ground everyone wants to know what bull they are out of. These would make great sires to clean up a set of cows and get some good looking calves. Plus you have “R98” to back them up. They have a well balanced set of numbers and are in the top 10% for WW and SCR



LOT 100

Lot 100 - C R111 MILES MCKEE 5322 ET

BW 3.3 WW 51 YW 72 MILK 28 IMF 0.14 URE 0.36
These are soggy made “Miles” sons out of “R111”. These matings have produced some really good bulls. The unfortunate thing is we only have a handful of females from this mating. They are well marked and huge middled. Very sound moving bulls.

Colyer

HEREFORDS
ANGUS

31058 Colyer Road
Bruneau, ID 83604
www.hereford.com

LiveAuctions.TV

Live Internet Bidding.
For more information,
visit www.liveauctions.tv

Guy, Sherry & Katie Colyer (208) 845-2313 • Guy's cell (208) 599-0340 • guy@hereford.com
Kyle & Bobby Jean Colyer (208) 845-2098 • Kyle's cell (208) 250-3924 • Ray and Bonnie Colyer (208) 845-2312

The "Brand That Works" PRODUCTION SALE

Tuesday, Feb. 23, 2016 • 12:30 p.m.

2016 sale offering includes progeny and service of:

BLUESTEM • TRUST • 755T • Z417 • 9525 • 177R • REDEEM • 2114 • SENSATION • Z100 • 2180



MCR 755T 4R Domino 486

P43565067 — Calved: Sept. 8, 2014

Sire: TH 223 711 Victor 755T • MGS: MSU TCF Revolution 4R

CE 3.6; BW 2.6; WW 68; YW 108; MM 30; M&G 64; MCE 1.8; MCW 117; UDDR 1.25;

TEAT 1.25; SC 0.8; FAT 0.050; REA 0.64; MARB 0.29; BMI\$ 19; CEZ\$ 16; BII\$ 12; CHB\$ 36

- 486 is a calving ease, high performance bull with WW and YW EPDs ranking in the top 1% of the breed, REA and MARB in the top 8% of the breed and CHB\$ in the top 1%. His dam, 2134, is one of our very best Revolution daughters. He is very stylish in his appearance, structurally very sound and is a definite herd sire prospect.



Sul-Tay 755T Victor ST8

P43548360 — Calved: Sept. 21, 2014

Sire: TH 223 711 Victor 755T • MGS: Schu-Lar 5N Of 9L 3008

CE 1.2; BW 4.7; WW 67; YW 105; MM 29; M&G 63; MCE 0.1; MCW 129; UDDR 1.26;

TEAT 1.24; SC 1.1; FAT 0.042; REA 0.36; MARB 0.48; BMI\$ 22; CEZ\$ 15; BII\$ 17; CHB\$ 38

- ST8 was sold in dam to Jeff Sullivan at Sul-Tay Herefords in our 2014 "Brand That Works" production sale. His dam, 963, has produced a full brother and two full sisters that are at Mill Creek. ST8 ranks in the top 2% for WW and YW EPDs, top 1% for MARB and CHB\$. ST8 combines the breed leading genetics of 755T, 19D, 3008, P606 and 8020. A herd sire that will add value to his progeny. ST8 shows that Mill Creek genetics definitely work for our customers.



MCR 2114 408 Domino 485

43564953 — Calved: Sept. 8, 2014

Sire: MCR About Time 242 2114 ET • MGS: UPS Domino 3027

CE 6.1; BW 1.3; WW 57; YW 90; MM 31; M&G 60; MCE 2.8; MCW 86; UDDR 1.29;

TEAT 1.29; SC 1.1; FAT 0.008; REA 0.69; MARB 0.24; BMI\$ 23; CEZ\$ 20; BII\$ 18; CHB\$ 33

- Calving ease numbers in the top 10% of the breed, REA and MARB in the top 7%, CHB\$ top 2%. 485 combines calving ease, performance, superb udders and carcass traits in a complete herd sire package. His dam, 1245, combines breed leading genetics from 3027, Harland and 8020. Combine that with 485's sire side from About Time and Legend 242 — makes a very popular pedigree with calving ease and performance. A sure fire calving ease herd bull prospect.



MCR Trust Harland 493

43565088 — Calved: Sept. 10, 2014

Sire: NJW 73S M326 Trust 100W ET • MGS: CJH Harland 408

CE 0.6; BW 1.6; WW 59; YW 95; MM 34; M&G 63; MCE 4.0; MCW 86; UDDR 1.45;

TEAT 1.35; SC 1.3; FAT -0.001; REA 0.90; MARB 0.19; BMI\$ 23; CEZ\$ 16; BII\$ 19; CHB\$ 33

- 493 puts all the performance traits together. WW and YW EPDs in the top 5% of the breed, UDDR and Teat EPDs top 5%, REA top 1%, MARB top 12% and CHB\$ in the top 2%. With a 1.6 birth weight EPD and a REA EPD of .90, 493 puts all the performance traits together in a herd bull package. His dam, 8112, with Harland, Pure Gold, 386 and MCR donors 239 and 035 in her genetic background, has been one of our true foundation females for the important traits of fertility, udders and performance. Don't miss this herd sire prospect.

Mill Creek Ranch

20635 Hessdale Rd.

Alma, KS 66401

David Breiner 785-449-2841

Cell 785-456-4790

Chad Breiner 785-564-2091

Ryan Breiner 785-207-3070

LiveAuctionsTV



1/5 HOFFMAN R·A·N·C·H

modern, stout, functional

Annual Bull Sale

FEBRUARY 19, 2016 | 1:00 P.M. CST
THEDFORD, NEBRASKA

Jason: 530.604.5096 | Denny: 406.425.0859 | Office: 308.645.2279

www.HoffmanRanch.com



H FULL THROTTLE 513 ET

REG #: 43582763

BW	WW	YW	MLK	CHB
+4.7	+57	+94	+20	+\$28



H DOMINO 5041 ET

REG #: 43588101

BW	WW	YW	MLK	CHB
+2.8	+53	+94	+29	+\$22



H HH BIG RIB 5055 ET

REG #: 43583479

BW	WW	YW	MLK	CHB
+0.5	+55	+77	+37	+\$28



HOFFMAN BIG SKY 5004

REG #: 18200542

CED	BW	WW	YW	MLK	SB
+10	+0.5	+71	+129	+28	+162.83



HOFFMAN DEMAND 5049

REG #: 18200557

CED	BW	WW	YW	MLK	SB
+8	+0.5	+67	+122	+29	+155.93



HOFFMAN OPPORTUNIST 4640

REG #: 17946626

CED	BW	WW	YW	MLK	SB
+2	+2.4	+57	+98	+22	+160.91



Selling

145+ Hereford Yearling, 18-Month Old & 2-Year Old Bulls

80+ Angus Yearling & 18-Month Old Bulls

35+ SimAngus Bulls

Large Groups of Commercial Females



25th Annual San Antonio Livestock Show All Breeds Bull & Commercial Female Sale

February 16 & 17, 2016
At The San Antonio Livestock
Show Auction Facility

*Selling The Best Bulls & Females
That Texas Has To Offer!*



Schedule of Events

Tuesday, February 16

8:00 A.M. - 12:00 Noon - Viewing of Sale Cattle
12:30 P.M. - All Breeds Bull Show
2:30 P.M. - Commercial Female Show
Sponsored by Capital Farm Credit

Wednesday, February 17

7:30 A.M. - Cattlemen's Breakfast
10:00 A.M. - All Breeds Bull Sale
The Commercial Female Sale is immediately following
the All Breeds Bull Sale

**Anthony J.
MIHALSKI**

7320 Triple Elm N.
San Antonio, Texas 78263
(210) 648-5475 Office • (210) 648-4939 Fax
aj1mihalski@aol.com

• **FEATURING** •
*525 Commercial Females - Pairs, Bred &
Open Heifers of All Breeds*

*70 Breeding Age Bulls - These cattle will be the best from
some of the top ranches throughout Texas.*

This sale will be broadcast live on the internet.

DVAuction

Broadcasting Real-Time Auctions
Real time bidding & proxy bidding available.



For more information or sale catalogs contact:

Southern Livestock Publishing, Inc.

Jim Banner - Michael Sturgess
P.O. Box 791364
San Antonio, Texas 78279-1364
(210) 524-9697 Office • (210) 524-9690 Fax
slivestock@southernlivestock.com



--- Since 1892 ---

VAN NEWKIRK HEREFORDS



Lot 146

BW 2.1 WW 64 YW 104 M 35 M&G 67 REA .37 IMF .23 CHB 34

◆ 200+ BULLS ◆
◆ 120 HEIFERS ◆

◆ SALE ◆

MON JAN 18 ◆ 1PM
OSHKOSH NE



Lot 1

BW .7 WW 59 YW 95 M 38 M&G 67 REA .39 IMF .38 CHB 33



Lot 152

BW 3.6 WW 67 YW 105 M 36 M&G 69 REA .35 IMF .24 CHB 32



Lot 249

BW 3.2 WW 52 YW 87 M 33 M&G 59 REA .09 IMF .22 CHB 27



Lot 7

BW -.9 WW 52 YW 83 M 37 M&G 63 REA .42 IMF .09 CHB 25



Lot 207

BW 2.8 WW 60 YW 92 M 30 M&G 60 REA .14 IMF .14 CHB 29

Selling 36 Registered Heifers!

- ✦ Explosive Growth ✦
- ✦ Tremendous Carcass ✦
- ✦ Breed Leading EPDs ✦
- ✦ 82 Commercial Heifers ✦

Right off our Replacements!



Lot 93

BW 4.0 WW 59 YW 97 M 21 M&G 51 REA .44 IMF .26 CHB 33

DVAuction

JOE VAN NEWKIRK 308-778-6049

KOLBY VAN NEWKIRK 308-778-6230



www.vannewkirkherefords.com

Selling Sunday JANUARY 31

in the
**THA Replacement
FEMALE SALE**

1 Pen

Hereford Heifers, Open
calved Feb.-May 2015

BRAINARD CATTLE CO LLC

806-898-1026

P. O. Box 661 • Pampa, TX 79066

SELLING *in the* **47th Annual** *Whiteface* **Replacement Female Sale** *January 31, 2016*

1 Pen

Open Hereford heifers
Calved Spring 2015

BAR J BAR HEREFORD RANCH

Jim & Sue Darnell ... 5 Paseo de Paz

El Paso, Texas 79901

cell ... 915-549-2534 • res ... 915-479-5290

47th Annual THA Replacement Female Sale
Sunday, January 31, 2016

ONE PEN OPEN HEREFORD HEIFERS

1 PEN

**FALL 2014 BORN
OPEN HEREFORD HEIFERS**

Since 1893

D

DANGELMAYR BROS. RANCH

940/759-4236

James 940-759-4711 • John 940-759-4599
Jack 940-759-2844 / cell: 940-736-4664 • Richard 940-759-4983
5164 County Rd. 426 • Muenster, TX 76252
e-mail: jdbranch@cooke.net

47th Annual **Whiteface** **Replacement** **Female Sale** Sunday, January 31, 2016 **Two Pens**

1 Pen - Hereford heifers bred AI to
Churchill Sensation 028X,
then exposed to Angus Bulls

1 Pen - Hereford x Angus cross heifers
calved spring 2014
bred to LBW
Angus bulls
to calve after
February 15, 2016

Dauer Herefords

Justin Dauer
res: 806-537-5294
cell: 806-683-7073
P O Box 982
Panhandle, TX 79068

Selling in Fort Worth

47th Annual Whiteface Replacement Female Sale
Sunday, January 31, 2016 • 1PM
West Arena, Fort Worth Stock Show Grounds

Selling 2 Pens Hereford Heifers

calved spring 2014
bred to Hereford bulls
June 15 to September 1, 2015
to calve from March 20 to June 5, 2016

**MILLIGAN
HEREFORDS**

Robert: 815/562-6391 • **Jim:** 815/562-4946
481 Church Rd. • Kings, Illinois 61868

1 Pen Hereford Heifers

Calved March-April 2014
bred to LBW Angus Bulls
June 15 to September 1, 2015

101 Diamond S Cattle Co.

Jerry Mast, Manager
214-316-7303
P.O. Box 266
Santo, Texas 76472

Selling 2 Pens

2-Year-Old Hereford Heifers
bred to Hereford Bulls

at the 47th Annual
Whiteface
Replacement Female Sale
Sunday, January 31, 2016



**summerour
ranch**

Allan Ricketson, Ranch Mgr.
806-333-0624 (cell)
4438 FM 3212 • Dalhart, TX 79022

Selling 2 Pens Hereford Heifers

calved Spring 2014
with Angus sired
December calves at side,
left open

**Larry Womack
254-893-6434**

4025 State Hwy 6
DeLeon, Texas 76444

Selling Sunday

in the

Whiteface Replacement Sale

January 31, 2016

3 Pens

2 Pens - Hereford x Angus cross Heifers
calved January-March 2014
exposed to LBW Angus Bulls 8-6-15 to 10-26-15

1 Pen - Hereford x Angus cross Heifers
calved January-March 2013
with fall born Angus sired calves at side.
Open and ready to breed.

Rocker b Ranch

Dennis Webb, Manager • 325-835-2025
P O Box 125 • Barnhart, TX 76930

Selling at the

47th Annual

Whiteface Replacement Female Sale
Sunday, January 31, 2016

1PM • West Arena
Fort Worth Stock Show Grounds

1 Pen

Hereford x Angus Heifers

calved January 2014
Bred April 1 to June 1, 2015
to LBW Express Ranch Angus Bulls
all will have calves at side

H Ranch

Jim & Kathleen Hill • 806-235-3776
e-mail: hranch@xit.net
P O Box 70 • Channing, TX 79018
www.hranch.com

Selling 2 Pens of Heifers

in the

47th Premium Whiteface Replacment Sale
Saturday, January 31, 1PM, West Arena

1 Pen

Open Hereford Heifers calved April 2015

1 Pen

Open Hereford x Angus cross heifers calved April 2015

Sneed-Pool Cattle Co.

Jason Eicke, Manager • 806-336-5546
P.O. Box 1509 • Amarillo, Texas 79105

SELLING

in the

Whiteface Replacement Sale
January 31, 2016

2 Pens Hereford x Angus cross

OPEN

HEIFERS

calved spring of 2015

Sandy Thornberry
806-678-0410

P. O. Box 449 • Clarendon, Texas 79226

2016

THA 47TH ANNUAL PREMIUM WHITEFACE REPLACEMENT HEIFER SHOW & SALE

Show 9:00 A.M., Saturday, January 30, 2016

Sale 1:00 P.M., Sunday, January 31, 2016

Judges: Charnel Bailey, Leesville, LA • Bill Cawley, Crockett, TX • Brandon Cutrer, Wharton, TX
Texas Hereford Association • Jack Chastain • 817-831-3161 or Cell 817-821-3544

HEREFORD PENS

CLASS 1 HEREFORD HEIFERS CALVED AFTER SEPTEMBER 1, 2014							
PLACE	PEN NO.	EXHIBITOR	AGE OF HEIFERS	BREEDING STATUS/HEALTH INFORMATION	NO. HEAD	PRICE	BUYER
	109W	THA HERITAGE PEN	FALL 2014, SPRING 2015	OPEN			
	107W	B&C CATTLE CO., MIAMI	NOV.-DEC. 2014	OPEN			
	101	BAR J BAR HEREFORD RANCH, EL PASO	SPRING 2015	OPEN			
	109E	BRAINARD CATTLE CO., PAMPA	JAN.-MAY 2015	OPEN			
	107E	DANGELMAYR BROS., MUENSTER	FALL 2014	OPEN			
	105W	SNEED-POOL CATTLE CO., AMARILLO	APR. 2015	OPEN			

CLASS 2 HEREFORD HEIFERS CALVED JANUARY 1-AUGUST 31, 2014 - NO CALVES							
PLACE	PEN NO.	EXHIBITOR	AGE OF HEIFERS	BREEDING STATUS/HEALTH INFORMATION	NO. HEAD	PRICE	BUYER
	113W	101 DIAMOND S CATTLE CO., SANTO	MAR.-APR. 2014	BRED TO LBW ANGUS BULLS JUNE 15, 2015 TO SEPT. 2015			
	106W	DAUER HEREFORDS, PANHANDLE	SPRING 2014	BRED AI TO CHURCHILL SENSATION 028X, THEN EXPOSED TO ANGUS BULLS			
	116W	JC CATTLE CO., JUNCTION CITY, KS	SPRING 2014	BRED TO LBW ANGUS BULL TO CALVE FEB. 15-MAY 15, 2016			
	116E	JC CATTLE CO., JUNCTION CITY, KS	SPRING 2014	BRED TO LBW ANGUS BULL TO CALVE FEB. 15-MAY 15, 2016			
	114E	MW HEREFORDS, BROWNWOOD	SPRING 2014	BRED TO LBW ANGUS BULL TO CALVE AFTER FEB. 1, 2016			
	108E	MANN CATTLE CO., LUBBOCK	SPRING 2014	BRED TO 1/2 ANGUS X 1/2 CORRIENTE BULLS TO CALVE AFTER MAR.1, 2016			
	115W	MILLIGAN HEREFORDS, KINGS, IL	MAR.-JUNE 2014	BRED TO HEREFORD BULLS JUNE 15-SEPT. 1, 2015			
	115E	MILLIGAN HEREFORDS, KINGS, IL	MAR.-JUNE 2014	BRED TO HEREFORD BULLS JUNE 15-SEPT. 1, 2015			
	112W	SUMMEROUR RANCH, DALHART	SPRING 2014	BRED TO HEREFORD BULL TO CALVE AFTER FEB. 15, 2016			
	112E	SUMMEROUR RANCH, DALHART	SPRING 2014	BRED TO HEREFORD BULL TO CALVE AFTER FEB. 15, 2016			
	111W	W4 RANCH, MORGAN	SPRING 2014	BRED TO HEREFORD BULL TO CALVE AFTER FEB. 1, 2016			

CLASS 3 HEREFORD HEIFERS CALVED JAN. 1, 2013 TO DECEMBER 31, 2013, NO CALVE							
PLACE	PEN NO.	EXHIBITOR	AGE OF HEIFERS	BREEDING STATUS/HEALTH INFORMATION	NO. HEAD	PRICE	BUYER
	114W	JC CATTLE CO. JUNCTION CITY, KS	FALL 2013	BRED TO LBW ANGUS BULL TO CALVE FEB. 15 TO MAY 15, 2016			
	108W	MANN CATTLE CO., LUBBOCK	FALL 2013	BRED TO 1/2 ANGUS X 1/2 CORRIENTE BULLS TO CALVE AFTER MAR.1, 2016			

CLASS 4 HEREFORD HEIFERS CALVED AFTER JAN.1, 2013, ANY OR ALL OF WHICH MAY HAVE A CALF AT SIDE							
PLACE	PEN NO.	EXHIBITOR	AGE OF HEIFERS	BREEDING STATUS/HEALTH INFORMATION	NO. HEAD	PRICE	BUYER
	111E	W4 RANCH, MORGAN	FALL 2013	BRED OR CALF AT SIDE BY BRANGUS BULLS			
	110W	LARRY WOMACK, DELEON	SPRING 2014	OPEN, ANGUS SIRE DEC. CALVES AT SIDE			
	110E	LARRY WOMACK, DELEON	SPRING 2014	OPEN, ANGUS SIRE DEC. CALVES AT SIDE			

CLASS 7 BLACK WHITEFACED HEREFORD/ENGLISH CROSS HEIFERS CALVED AFTER SEPTEMBER 1, 2014							
PLACE	PEN NO.	EXHIBITOR	AGE OF HEIFERS	BREEDING STATUS/HEALTH INFORMATION	NO. HEAD	PRICE	BUYER
	105E	SNEED-POOL CATTLE CO., AMARILLO	APR.-MAY 2015	OPEN			
	103W	SANDY THORNBERRY, CLARENDON	SPRING 2015	OPEN			
	103E	SANDY THORNBERRY, CLARENDON	SPRING 2015	OPEN			

CLASS 8 BLACK WHITEFACED HEREFORD/ENGLISH CROSS HEIFERS CALVED JANUARY 1 TO AUGUST 31, 2014 - NO CALVES							
PLACE	PEN NO.	EXHIBITOR	AGE OF HEIFERS	BREEDING STATUS/HEALTH INFORMATION	NO. HEAD	PRICE	BUYER
	106E	DAUER HEREFORDS, PANHANDLE	SPRING 2014	BRED TO LBW ANGUS BULLS TO CALVE AFTER FEB.15, 2016			
	104W	ROCKER b RANCH, BARNHART	JAN.-MAY 2014	BRED TO LBW ANGUS BULLS 8-6-15 TO 10-26-15			
	104E	ROCKER b RANCH, BARNHART	JAN.-MAY 2014	BRED TO LBW ANGUS BULLS 8-6-15 TO 10-26-15			
	113E	W4 RANCH, MORGAN	SPRING 2014	P.E. TO HEREFORD BULLS 12-9-15 TO SALE DATE			

CLASS 10 BLACK WHITEFACED HEREFORD/ENGLISH CROSS HEIFERS CALVED AFTER JAN. 1, 2013 - ANY OR ALL OF WHICH MAY HAVE CALF AT SIDE							
PLACE	PEN NO.	EXHIBITOR	AGE OF HEIFERS	BREEDING STATUS/HEALTH INFORMATION	NO. HEAD	PRICE	BUYER
	100	H RANCH, CHANNING	JAN. 2014	OPEN - EXPRESS RANCH ANGUS SIRE CALVES AT SIDE			
	102	ROCKER b RANCH, BARNHART	JAN.-MAR. 2013	OPEN - FALL BORN ANGUS SIRE CALVES AT SIDE			

CLASS 5 - CHAMPION PEN HEREFORD HEIFERS

CLASS 11 - CHAMPION PEN BLACK WHITEFACE ENGLISH CROSS HEIFERS

CLASS 6 - RESERVE CHAMPION PEN HEREFORD HEIFERS

CLASS 12 - RESERVE CHAMPION PEN BLACK WHITEFACE ENGLISH CROSS HEIFERS

FT. WORTH NATIONAL
COWTOWN
Invitational Sale

HEREFORD and POLLED HEREFORDS

January 31, 2016 • 3PM • West Arena

Lot 11

Lot 19



BK MISS 88X RIBEYE 5006 • 43608525 • 01/05/2015

This is an extremely powerful young heifer that still maintains some femininity and look. The mating between 88x and New Era has worked very well for us. She's classy enough to be a winner in the show ring, and has enough productivity in her pedigree to make a great donor cow.

KCF BENNETT 3008 M326 [CHB,SOD,DLF,HYF,IEF]
 SHF RIB EYE M326 R117 [CHB,SOD,DLF,HYF,IEF]
 HVH MISS HUDSON 83K 8M

NJW 98S R117 RIBEYE 88X ET [CHB,DLF,HYF,IEF]

CL 1 DOMINO 9126J ET [SOD,CHB,DLF,IEF]
 NJW 9126J DEW DOMINO 98S [DOD,DLF,HYF,IEF]
 NJW 57G 74G DEW 5M [DLF,HYF,IEF]

UPS TCC NITRO 1ET [CHB,DLF,HYF,IEF]
 C NEW ERA ET [CHB,DLF,HYF,IEF]
 C NOTICE ME ET [DLF,HYF,IEF]

BK MISS NEW ERA 2066 [DLF,HYF,IEF]

HH ADVANCE 4191P [SOD,DLF,IEF]
 BK MISS CHARLI 8036 [DOD]
 BK 2163 DOMINETTE 6152

CED	BW	WW	YW	MILK	M&G	CEM	MCW	US
+1.8	+3.7	+57	+88	+31	+60	+4.4	+86	+1.19
TS	SC	FAT	REA	MARB	BMI	CEZ	BII	CH B
+1.17	+0.7	-0.046	+0.49	+0.11	+\$17	+\$16	+\$12	+\$31

BK 88X RIBEYE 5018 ET • 43608501 • 01/11/2015

This 88X son has been our favorite all summer. He's out of our most powerful donor cow that is a Pure Gold daughter. He has great numbers matched with an outstanding look. He was awarded Grand Champion at the 2015 New Mexico State Fair as a calf. He will be a great show bull, or herd bull.

KCF BENNETT 3008 M326 [CHB,SOD,DLF,HYF,IEF]
 SHF RIB EYE M326 R117 [CHB,SOD,DLF,HYF,IEF]
 HVH MISS HUDSON 83K 8M

NJW 98S R117 RIBEYE 88X ET [CHB,DLF,HYF,IEF]

CL 1 DOMINO 9126J ET [SOD,CHB,DLF,IEF]
 NJW 9126J DEW DOMINO 98S [DOD,DLF,HYF,IEF]
 NJW 57G 74G DEW 5M [DLF,HYF,IEF]

HH ADVANCE 6052F [SOD,DLF,IEC]
 HH ADVANCE 026K 1ET [CHB,DLF,HYF,IEF]
 HH MS ADVANCE 4054D [DOD]

BK MISS JORDAN 3152 [DLF,HYF,IEF]

C -S PURE GOLD 98170 [CHB,SOD,DLF,HYF,IEF]
 BK MS PURE GOLD 0128 [DLF,HYF,IEF]
 BK MISS PACER 0016

CED	BW	WW	YW	MILK	M&G	CEM	MCW	US
+2.0	+2.3	+50	+71	+28	+53	+2.8	+69	+1.20
TS	SC	FAT	REA	MARB	BMI	CEZ	BII	CH B
+1.17	+0.8	-0.022	+0.33	+0.16	+\$19	+\$17	+\$16	+\$27



Bill King • 505-220-9909
Tom Spindle • 505-321-8808
Becky Spindle, Secretary • 505-252-0228
P.O. Box 2670 • Moriarty, NM 87035
bill@billkingranch.com
www.billkingranch.com

FT. WORTH NATIONAL
COWTOWN
Invitational Sale
HEREFORD and POLLED HEREFORDS

Offering a Select Group of
19 Bulls • 12 Females
2 Embryo Packages • 1 Flush
Herd Bull Prospects • Show Prospects

Sunday, January 31, 2016

3PM • West Arena

SOUTHWESTERN EXPOSITION AND LIVESTOCK SHOW
FT WORTH, TEXAS

The SOURCE for the TOP GENETICS in the Hereford Industry! *pictured are just a few of the select offering*



EXR UNPARALLELED LASS 5166 ET
Sire: H/TSR/CHEZ/FULL THROTTLE ET [DLF,HYF,IEF]

EPDs	BW	WW	YW	Milk	M&G
	+4.8	+56	+94	+22	+50

Consignor: EXPRESS RANCHES, INC.



GKB 212 LADY ADVANCE 106C
Sire: GKB PRCC 88X WACO 212 ET [DLF,HYF,IEF]

EPDs	BW	WW	YW	Milk	M&G
	+3.9	+56	+87	+24	+52

Consignor: GKB CATTLE



BK MISS 88X RIBEYE 5006
Sire: NJW 98S R117 RIBEYE 88X ET [CHB,DLF,HYF,IEF]

EPDs	BW	WW	YW	Milk	M&G
	+3.7	+57	+88	+31	+60

Consignor: KING HEREFORDS



BEACON HILL CCC DO TELL 1527ET
Sire: CRR ABOUT TIME 743 [CHB,SOD,DLF,HYF,IEF]

EPDs	BW	WW	YW	Milk	M&G
	+3.1	+51	+82	+26	+52

Consignor: BEACON HILL



W4 955W LADY C009
Sire: CL1 DOMINO 955W [CHB,DLF,HYF,IEF]

EPDs	BW	WW	YW	Milk	M&G
	+6.0	+64	+106	+31	+64

Consignor: W4 RANCH



RJ VICTORIA 5072 ET
Sire: DKF RO CASH FLOW 0245 ET [CHB,DLF,HYF,IEF]

EPDs	BW	WW	YW	Milk	M&G
	+3.3	+56	+94	+28	+56

Consignor: RAFTER J CATTLE CO.



BEACON HILL CCC TIMER 1500ET
Sire: CRR ABOUT TIME 743 [CHB,SOD,DLF,HYF,IEF]

EPDs	BW	WW	YW	Milk	M&G
	+3.1	+52	+83	+26	+52

Consignor: BEACON HILL



BF BAR1 RUGER 469B
Sire: BF 144U BEAUDREY 2104 ET [DLF,HYF,IEF]

EPDs	BW	WW	YW	Milk	M&G
	+5.1	+62	+97	+25	+56

Consignor: BRUMLEY FARMS



BK 88X RIBEYE 5018 ET
Sire: NJW 98S R117 RIBEYE 88X ET [CHB,DLF,HYF,IEF]

EPDs	BW	WW	YW	Milk	M&G
	+2.3	+50	+71	+28	+53

Consignor: KING HEREFORDS



FOUR L T32 ABE B4032
Sire: GO ABE T32 [CHB,DLF,HYF,IEF]

EPDs	BW	WW	YW	Milk	M&G
	+1.0	+58	+83	+37	+66

Consignor: FOUR L HEREFORD FARM



GKB EJE 88X RIBEYE 317B [DLF,HYF,IEF]
Sire: NJW 98S R117 RIBEYE 88X ET [CHB,DLF,HYF,IEF]

EPDs	BW	WW	YW	Milk	M&G
	+2.9	+57	+88	+30	+59

Consignor: GKB CATTLE



NCC RED MAN 408 ET
Sire: BR DM TNT 7010 ET [CHB,DLF,HYF,IEF]

EPDs	BW	WW	YW	Milk	M&G
	+3.3	+58	+88	+18	+46

Consignor: NOLLES CATLE CO.



BK BUCKHORN B418 ET
Sire: NJW 98S R117 RIBEYE 88X ET [CHB,DLF,HYF,IEF]

EPDs	BW	WW	YW	Milk	M&G
	+3.2	+59	+96	+28	+57

Consignor: BUCK CATTLE CO.



TFR KR BUTCH CASSIDY 1449 ET
Sire: AH JDH CRACKER JACK 26U ET [CHB,DLF,HYF,IEF]

EPDs	BW	WW	YW	Milk	M&G
	+4.6	+61	+97	+24	+54

Consignor: TURKEY FEATHER RANCH



VH CHANGE MAKER 1505 ET
Sire: SG MR THRILLER A49 [DLF,HYF,IEF]

EPDs	BW	WW	YW	Milk	M&G
	+4.0	+50	+80	+24	+49

Consignor: VANDERWORK HEREFORDS



WCC MANIFESTO 27C
Sire: CRR 719 CATAPULT 109 [CHB,DLF,HYF,IEF]

EPDs	BW	WW	YW	Milk	M&G
	+2.6	+65	+106	+26	+59

Consignor: WEIL CATTLE CO.

CONSIGNORS

BEACON HILL
BRUMLEY FARMS
BUCK CATTLE CO.
EXPRESS RANCHES, INC.
F4 HEREFORDS
FOUR L HEREFORD FARM
GKB CATTLE
DIANE HEATON

JC CATTLE CO.
KING HEREFORDS
LORENZEN FARMS
MANN CATTLE CO.
NOLLES CATTLE CO.
PLAINVIEW STOCK FARM
PRAIRIE ROSE CATTLE CO.
STEVEN RADER

RAFTER J CATTLE CO.
S-W HEREFORDS
RON SCHLEGEL
TURKEY FEATHER RANCH
VANDERWORK HEREFORDS
W4 RANCH
WEIL CATTLE CO.

**300
HEAD!**

Watch for catalog on the *THA* website: www.texashereford.org
Broadcast live on Superior Productions • superiorclicktobid.com

Also plan to attend the
Premium Whiteface Replacement Female Sale • 1:00PM • West Arena

Texas Polled Hereford Association
P.O. Box 1867 • Port Lavaca, Texas 77979
361/571-TPHA (8742)
email: manager@tpha.net

Texas Hereford Association
4609 Airport Freeway • Fort Worth, TX 76117
817/831-3161 • 817/831-3162 (fax)
email: texashereford@sbcglobal.net



OUR CONSIGNMENTS



PRCC TALL GRASS 530C ET

If you're looking for a stout, rugged herd bull that can also make females to keep in your herd, make sure that you look up Tall Grass. This horned son of S109 is full of red meat, and still maintains a good turn to his rib. This is supported with a REA EPD in the top 5% of the breed and a Milk and Growth EPD in the top 10% as well. If you follow the bottom side of his pedigree you will also see the immortal Keysha as the foundation cow behind him. Make sure to mark him as one to watch, you'll be glad you did.

BR MOLER ET [CHB,DLF,IEF]
 GKB DOWNTOWN B627 ET [DLF,HYF,IEF]
 GKB MISS PURE GOLD B239 ET [DLF,HYF,IEF]
GKB PRCC DOWNTOWN AVENUE ET [DLF,HYF,IEF]

C-S PURE GOLD 98170 [CHB,SOD,DLF,HYF,IEF]
 KB MS PURE GOLD 0128 [DLF,HYF,IEF]
 BK MISS PACER 0016

PRCC PRAIRIE GAL 554C • 43635591 • 07/02/15

REMITALL KEYNOTE 20X [SOD,CHB]
 DM BR L1 DOMINO 146 [CHB,SOD,DLF,IEF]
 DM L1 DOMINETTE 518

GKB JKL 146 BREEZE B210 ET

HH ADVANCE 9012Y [SOD,DLF,IEC]
 GKB 9012Y BREEZE B421 [DLF,IEF]
 RAW MS BREEZE 14M

554C is just a July, but is she ever a sweet one! Cool fronted, square hiped, great legged, and style to burn. Her sire, DOWNTOWN AVENUE was the Reserve Champion Horned bull in Ft. Worth in 2012 so the power to produce champions is there. 554C's mother B210 is tight uddered, small teated, and has passed on her picture perfect profile to her daughter. The Breeze cow family has written history for GKB, and numerous other breeders, just imagine what this young summer heifer has in store for her new owner.

HH ADVANCE 932J 1ET [SOD,CHB,DLF,IEF]
 HH ADVANCE 3196N [CHB,SOD,DLF,IEC]
 HH MISS ADVANCE 9082J [DOD]

GO 3196 ADVANCE S109 [CHB,DLF,HYF,IEF]

GO EXCEL L18 [CHB,SOD,DLF,HYF,IEF]
 GO MS L18 EXCEL N89 [DLF,IEF]
 GO MS 309C ADVANCE 0036

PRCC TALL GRASS 530C ET • 43632841 • 04/07/15

STAR BRIGHT FUTURE 533P ET [CHB,DLF,HYF,IEF]
 STAR TCF SHOCK & AWE 158W ET [CHB,DLF,HYF,IEF]
 MSU APOLLONIA 10M [DLF,HYF,IEF]

BK YESHA 1051 [DLF,HYF,IEF]

STAR BRIGHT FUTURE 533P ET [CHB,DLF,HYF,IEF]
 DJC BRIGHT KEYSHA ET [DLF,HYF,IEF]
 SSF KEYSHA 949 [DLF,HYF,IEF]



Elizabeth Nessler • 217-496-2442
 Fred and Elaine Nessler • 217-741-5500
 Tyler Galloway, Ranch Mgr. • 918-961-1558
 www.prairierosecattle.com
 Waxahachie, TX 75167

TURKEY *Feather* RANCH is COWTOWN *bound!*



BUTCH CASSIDY
 REG #: 43574709
 CRACKER JACK X OUTCROSS
 BORN NOV. 2014

TURKEYFEATHERRANCH@YAHOO.COM | WWW.TURKEYFEATHERRANCH.COM
 ERNIE & RINDY BACON: 580.421.2597 | AUSTIN PERRY: 559.346.9353 | GRAHAM BLAGG: 530.913.6418

FT. WORTH NATIONAL
COWTOWN
Invitational Sale
HEREFORD and POLLED HEREFORDS



Featuring
Lot #21

M Caesar 5650B

There is only one word that describes this bull...Classy! Caesar has been a favorite around our place since he was a week old. This bull is deep ribbed, has explosive muscle shape, tracks like a cat on the move and has loads of foot and bone! Hard to come by one like this that has a stacked pedigree on both sides and still retains a sharp look. The Ranchers Kind of bull! Contact Hadley for any questions.

REMITALL ONLINE 122L [CHB,SOD,DLF,HYF,IEF]
 STAR BRIGHT FUTURE 533P ET [CHB,DLF,HYF,IEF]
 RB L1 DOMINETTE 8116 [DLF,HYF,IEF]

KCL 533 FORMAL ATTIRE 2042 ET

MSU STAR HEADLINER [SOD,DLF,HYC,IEF]
 BR MSU MS SHOWLINE 2042 ET
 BR L1 DOMINETTE 6052

M CAESAR 5805B • 43635945 • 12-27-2014

TH SHR 605 57G BISMARCK 243R ET [CHB,SOD,DLF,HYF,IEF]
 TH 75J 243R BAILOUT 144U ET [CHB,DLF,HYF,IEF]
 KB 615C NICKY 75J [DLF,IEF]

H JT LADY BAILOUT 0308 ET

BR WILDFIRE 2153 [DLF,HYF,IEC]
 H EVELYN 7011 [DLF,HYF,IEF]
 H DOMINETTE 841

CED	BW	WW	YW	MILK	M&G	CEM	MCW	US
-2.9	+5.2	+51	+82	+16	+42	+1.3	+108	+1.08
TS	SC	FAT	REA	MARB	BMI	CEZ	BII	CH B
+1.11	+0.8	-0.009	+0.25	-0.03	+\$15	+\$12	+\$13	+\$21



Lot #22

M Caribou 3581B

Baldy raising machine here folks! Caribou is extra long bodied, huge footed and raw boned with tremendous muscle shape and thickness. He's super cleaned fronted and lays real good through his shoulder. He has 50% pigment in both eyes and a red scrotum. Short marked bull that's red necked and red legged. This bull will do great in any area or climate you put him in. Contact Hadley for any questions.

REMITALL ONLINE 122L [CHB,SOD,DLF,HYF,IEF]
 STAR BRIGHT FUTURE 533P ET [CHB,DLF,HYF,IEF]
 RB L1 DOMINETTE 8116 [DLF,HYF,IEF]

KCL 533 FORMAL ATTIRE 2042 ET

MSU STAR HEADLINER [SOD,DLF,HYC,IEF]
 BR MSU MS SHOWLINE 2042 ET
 BR L1 DOMINETTE 6052

M CARIBOU 3581B • 43635708 • 12-05-2014

HH ADVANCE 9005J [CHB,DLF,IEF]
 CJH 9005 ADVANCE 414
 CJH DOMINETTE 325

MISS SR 9005 ADVANCE C30

ARS DEL RIO 202
 SR MISS RIO L15
 SR MISS HOMESETTER 98

CED	BW	WW	YW	MILK	M&G	CEM	MCW	US
-3.3	+5.2	+49	+75	+20	+44	+1.7	+91	-
TS	SC	FAT	REA	MARB	BMI	CEZ	BII	CH B
-	+0.7	+0.001	+0.11	0.00	+\$14	+\$12	+\$13	+\$20

★ ★ ★ ★ ★ ★ ★ ★ ★ ★
 Also consigning to the
 47th Premium
 ★ Whiteface Replacement Female Sale ★
 1 Pen Fall 2013 & 1 Pen Spring 2014 Hereford Females
 Bred to Corriente x Angus bulls to calve after March 1

MANN
CATTLE CO.
LUBBOCK, TX
The Functional Kind

Mark, Briss, Hadley, Lauren and Colby Mann
 Hadley (cell) 432-788-8375
 Mark 806-620-9002
 Res. 806-762-8697
 e-mail: mannmen1@yahoo.com
 www.manncattle.com

He sells as Lot #17



RSS LGH Grun Apful Scheib 1501

43598519 • Calved: February 16, 2015

HH ADVANCE 9005J [CHB,DLF,IEF] KB L1 DOMINO 519
 C**JH HARLAND 408** [SOD,CHB,DLF,HYF,IEF] HH MS ADVANCE 4054D [DOD]
 CJH L1 DOMINETTE 0064 [DLF,HYF,IEF] L1 DOMINO 920501 [SOD]
 KSU WILDCAT 656 ET CJH L1 DOMINETTE 759 [DLF,HYF,IEF]
RSS FRAU KATZE 1311 BR MOLER ET [CHB,DLF,IEF]
 RSS MISS 0130 0822 MISS MARK K 111 [DOD]
 RSS ACHIEVER 0130
 RSS MISS GOLD ACHIEVER 6006

He is a dark red Harland son calved unassisted out of a two-year-old Wildcat cow. A low birth weight calving ease bull. Very smooth in his shoulder and attractive in his appearance.

CED	BW	WW	YW	Milk	M&G	CEM	MCW	SC	FAT	REA	MARB	BMI\$	CEZ\$	BI\$	CHB\$
+4.2	+2.5	+49	+83	+27	+51	+5.1	+86	+1.2	+0.022	+0.26	+0.23	+23	+20	+19	+27

R. Schlegel & Sons • 940-256-8490

Olney, Texas



LF 2412 LEGACY 4001

43516317 • 1/21/14

LF 2412 Legacy 4001 is without a doubt one of the best herd sires we've ever consigned. He's long, thick, has a good foot and very mobile. His sire was Reserve



His sire, KTP C&M Legacy 2002

Junior Champion at Denver behind Miles McKee and his dam always stands out in the pasture. Legacy 4001 was Reserve Junior Champion at the 2015 Illinois State Fair. We are retaining a one-quarter semen interest, full possession sells.

CED	BW	WW	YW	MM	M&G	CEM	MCW	US	TS	SC	FAT	REA	MARB	BMI\$	CEZ\$	BI\$	CHB\$
+1.5	+3.8	+49	+81	+23	+47	+1.6	+101	+1.21	+1.14	+0.9	-0.011	+0.14	+0.20	+19	+16	+17	+26

LOT #31



CHURCHILL YANKEE ET [CHB,SOD,DLF,HYF,IEF]
H5 SOLUTION 064 [DLF,HYF,IEF]
 H5 MS 9213 DOMET 410 [DLF,HYF,IEF]
KTP C&M LEGACY 2002 [DLF,HYF,IEF]
 GO 205 EXCEL N32
GO MS N32 EXCEL T42 [DLF,HYF,IEF]
 GO MS 102 DOMINO N187 [DOD]
 CHURCHILL YANKEE ET [CHB,SOD,DLF,HYF,IEF]
H5 YANKEE 0144 [CHB,DLF,HYF,IEF]
 H5 MS 9126 DOMET 594 [DOD,DLF,HYF,IEF]
JCS 0144 DOMINETTE 2412
 CHURCHILL RAM 708T [CHB]
JCS LADY RAM 9206
 JCS MISS ROYALTY 6857

Lorenzen Farms • 217-822-2803

Adam Harms 217-369-3609 • Chrisman, IL

Selling in the COWTOWN Hereford Sale!!

Sunday, January 31, 2016 • Fort Worth Stock Show

BK BUCKHORN

B418n ET

DOB: 08.22.14

S: NJW 98S R117 Ribeye 88X ET

D: STAR KKH Keyshona 25W ET

PRIVATE TREATY

Breeding Age Horned &
Polled Hereford bulls
for sale Private Treaty at the
ranch in Madill, Oklahoma.

Spring Edition

03.26.16

1:00 P.M. AT THE RANCH

Selling 30 head Fall Born Horned Hereford & Polled Hereford
Show Prospects and future Donors

Where Champions Are A Tradition!



JIRL, BRENDA & BAILEY BUCK

580.795.4865 mobile
Madill, OK 73446

www.buckcattle.com
jirl@buckcattle.com

Matt Scasta, 580.220.7288

All Buck cattle are fed MFM Feeds &
Sure Champ. Talk to us about their advantages.

SELLING IN FORT WORTH • JANUARY 31, 2016 • 3PM



LOT #33 • 3 IVF EMBRYOS

Sire: RST Time's A Wastin' 0124 • #43123163
Dam: K&B MS Silver Advance 7093T • #42828563

Time's A Wastin, Denver Champion, a power bull regarded for calving ease, and an elite sire who continues to impress with his calves.

Dam Silver Advance 7093T (pictured) is a former donor cow for Hoffman, offering big time udder quality. She was flushed to the top bulls in the breed and continues to deliver. 7093T's dam is K&B Sweet Sally 5113, a P606 daughter. We believe this mating will result in an expected progeny of CED [+1.6], BW [+1.9], calving ease, maternal power, without sacrificing performance.



Dam of Lot #33

Embryos located at
 Trans Ova Genetics, Centerville, TX
 Contact Brad Brundage 903-536-3586

S-W Herefords

Neal and Patti Spencer • 817-845-1382
 Bennington OK



#6

5072 is a great show heifer prospect. She has a big hip, good rib shape, and the eye appeal she needs to win in the show ring. Cash flow is one of the most popular bulls in the breed. He has produced a lot of great females and this one is no different. This dark red heifer is out of one of our top donors and will be a donor someday herself. Don't miss this opportunity!

We reserve the right to one (1) flush or a minimum of six (6) eggs.

SELLING AS LOT #6 • RJ VICTORIA 5072 ET

CEM	BW	WW	YW	MILK	M&G	CEM	MCW	US
+1.1	+3.4	+57	+95	+27	+56	+3.9	+99	+1.13
TS	SC	FAT	REA	MARB	BMI	CEZ	BII	CHB
+1.19	+1.0	-0.006	+0.48	-0.12	+\$17	+\$15	+\$12	+\$24

- THM DURANGO 4037 [CHB,SOD,DLF,HYF,IEF]
- CRR ABOUT TIME 743 [CHB,SOD,DLF,HYF,IEF]
- CRR D03 CASSIE 206 [DLF,HYF,IEF]
- DKF RO CASH FLOW 0245 ET [CHB,DLF,HYF,IEF]
- FELTONS OZZIE 492 [SOD,DLF,HYF,IEF]
- JRR MISS TOBEY 711T [DLF,HYF,IEF]
- JRR RANDI 524R [DOD,DLF,HYF,IEF]

RJ VICTORIA 5072 ET • P43635707 • 04/10/2015

- REMITALL ONLINE 122L [CHB,SOD,DLF,HYF,IEF]
- BR DM BODACIOUS ET [CHB,DLF,IEF]
- DM L1 DOMINETTE 340
- BR BO VICTORIA 8161 [DLF,HYF,IEF]
- KJ SPH 520E CARTER 183J [DLF,IEF]
- BR VICTORIA 2104
- BR MS LANSING 0044



Colt Johnson 325-280-7975 • Josh Taylor 918-605-5139
 Larry Johnson 325-692-3940 • 325-201-2001

1917 Hillside Road • Abilene, Texas 79603 • rafterj@dishmail.net
 Visit our website to view our entire herd: www.rafterjattle.com

FT. WORTH NATIONAL
COWTOWN
Invitational Sale
HEREFORD and POLLED HEREFORDS

Sunday, January 31, 2016 • 3PM • West Arena • Fort Worth



Sells as Lot #12 • **JLB Lady Legacy 1485** • 43615271

This is a 1st for JC Cattle! We are offering you an October born female, and she is fancy! Her style, thickness and femininity are the norm for her sire Legacy. This fall, Legacy females have topped several sales across the country. 1485 is one that will get you noticed in the show-ring, with a quiet disposition. She will be AI bred this winter to BR Copper 2083.

GO LARRY W26 [DLF,IEF] HH ADVANCE 7195T [CHB,SOD,DLF,HYF,IEF]
 GO MS LILY T133
JLB W26 LEGACY 1101 [DLF,HYF,IEF]
 BR MOLER ET [CHB,DLF,IEF]
 BR GEISHA 8003 ET [DLF,HYF,IEF] BR DM GEISHA ET [DLF,HYF,IEF]
 K&B HEADLINE 6147S BR DM CHANNING ET [CHB,DLF,IEF]
JLB LADY HEADLINE 9618 K&B MISS DOMINO 2500
 JL LADY DIAMOND 6183 OXH DIAMOND 0222
 SVR MISS STAR DONALD 1830

CED	BW	WW	YW	MILK	M&G	CEM	MCW	US
-0.3	+5.1	+52	+88	+23	+49	+1.6	+87	+1.20
TS	SC	FAT	REA	MARB	BMI	CEZ	BII	CHB
+1.25	+0.7	-0.013	+0.50	+0.01	+\$15	+\$13	+\$12	+\$25



Sells as Lot #23 • **JLB Maverick 1474** • 43615249

JC Cattle is offering you a rare opportunity. This is one of the best young bulls we have ever raised. Thick, stout, sound and complete, the trademark of his sire Legacy. Maverick has the ability to add to a registered or commercial program. Or look at him seriously to add to a program to use for show steers. Maverick's dam is a donor in our herd, she is one of the thickest and biggest bodied cows that we own, with an excellent udder. Bulls like him are hard to find!

GO LARRY W26 [DLF,IEF] HH ADVANCE 7195T [CHB,SOD,DLF,HYF,IEF]
 GO MS LILY T133
JLB W26 LEGACY 1101 [DLF,HYF,IEF]
 BR MOLER ET [CHB,DLF,IEF]
 BR GEISHA 8003 ET [DLF,HYF,IEF] BR DM GEISHA ET [DLF,HYF,IEF]
 UPS ODYSSEY 7128 [DLF,IEF] UPS ODYSSEY 1ET [CHB,SOD,DLF,HYF,IEF]
PMH MS OBSESSION 006 ET UPS MISS DIAMOND 0857 [DLF,IEF]
 MOHICAN LASS 151L [DLF,IEF] REMITALL BOOMER 46B [CHB,SOD,DLF,HYF,IEF]
 FSL VICTORIA 579 16F

CED	BW	WW	YW	MILK	M&G	CEM	MCW	US
-0.5	+5.9	+56	+96	+24	+52	+2.0	+108	+1.01
TS	SC	FAT	REA	MARB	BMI	CEZ	BII	CHB
+1.04	+0.8	-0.010	+0.58	+0.09	+\$17	+\$13	+\$13	+\$29

Also selling at the 47th Annual
Whiteface Replacement Female Sale

3 Pens Fall 2013 & Spring 2014 Bred Heifers

Bred to Angus Bull to calve Feb. 15 to May 15, 2016

JC Cattle Co.

Cindy Brown 785-761-8994

Jason & Lori Brown 785-770-7469

2437 Stahl Rd. • Junction City, KS 66441

FT. WORTH NATIONAL COWTOWN Invitational Sale

HEREFORD and POLLED HEREFORDS

JANUARY 31, 2016 • 3PM • WEST ARENA



SR Baby Blue 36C

36C is a very clean made, deep ribbed, easy keeping Heifer, who is dog gentle. She is sired by SR Bright Knight 3UET who has left his mark on our herd for producing outstanding females and commercial Bulls alike. Baby Blue is out of our pick from the Jimmie Johnson Dispersal sale. This Heifer can be shown very successfully, but we feel her true power will be raising progeny that will flat work in today's market.

REMITALL ONLINE 122L [CHB,SOD,DLF,HYF,IEF]
STAR BRIGHT FUTURE 533P ET [CHB,DLF,HYF,IEF]
RB L1 DOMINETTE 8116 [DLF,HYF,IEF]

SR BRIGHT KNIGHT 3U ET
CS BOOMER 29F [SOD,CHB,DLF,HYF,IEF]
STAR SPIRIDGE ANGELA 306M ET
STAR SPIRIDGE ANGEL 357H

SR BABY BLUE 36C • P43613813 • 04-03-2015

CMF 103T VICTOR 262D [SOD]
RED HILLS CLINTON 262D M14
RED HILL DARLA 20X K02
RED HILLS BABY BLUE M14 S236
DS KCK LEGEND 10J
RED HILLS BUGSY 10J P23
RED HILLS MS HURRICANE K02 M61

CED	BW	WW	YW	MILK	M&G	CEM	MCW	US	TS	SC	FAT	REA	MARB	BMI	CEZ	BII	CHB
+1.7	+4.4	+49	+82	+20	+44	-0.2	+96	+0.99	+1.00	+0.6	+0.014	+0.22	+0.07	+\$13	+\$12	+\$12	+\$21

#34 Flush



Right to IVF Flush

**TH 557E 57G Burgundy 33N
[DLF,HYF,IEF] P42387426**

What an amazing opportunity! We are offering the right to IVF flush Burgundy 33N to the Bull of your choice. We were able to acquire Burgundy 33N from the Del Hawk sale last fall, and her

list of accomplishments as a prolific Donor Cow is far and wide. Burgundy has that power cow look, with that extended front end, and massive rib cage that gives her the ability to hit a home run with multiple different bulls. This cow alone had three class winners and a reserve division at the 2014 JNHE, and 2 class winners at JNHE 2015. Burgundy has also produced many high sellers in her time including most recently the co-high seller in Del Hawks Fall sell, selling for \$40,000. We have our first set of calves out of 33N on the ground this fall, and they are impressive. Terms of Flush: We are Guaranteeing 6 freezable embryos with the buyer receiving everything up to 10. Then after that embryo will be split with buyer receiving odd number embryos and we will take the evens. IVF Flush will be conducted at Trans Ova Genetics, Centerville, TX, and cow will be available immediately after sale. Buyer to pay all flush expenses, and semen cost.

REMITALL TEAMSTER 9T
REMITALL KEYNOTE 20X [SOD,CHB]
REMITALL PATRICIA 99P
RU 20X BOULDER 57G [CHB]
REMITALL ACME 10A [SOD]
RU 10A DEW 57D
RU 40L BUTTERCUP 57Z
TH 557E 57G BURGUNDY 33N [DLF,HYF,IEF]
GLEN POUNDMAKER 28U [SOD]
KLONDIKE 28U 707B [HYF]
KLONDIKE NORDINE 296X
MEGS 707B BURGUNDY 557E
DAVIS 81W TOP CAT ET 125Y
YY 125Y BURGUNDY 257B
KILMRLE 452M GEMINI R257

CED	BW	WW	YW	MILK	M&G	CEM	MCW	US
+0.1	+1.9	+39	+69	+16	+35	+1.9	+76	+1.50
TS	SC	FAT	REA	MARB	BMI	CEZ	BII	CHB
+1.46	+0.8	-0.012	+0.34	-0.08	+\$17	+\$15	+\$16	+\$16

RADER HEREFORDS

Susan, Mike, Steven and Sara
Ranch 903.537.7600

Steven's cell 903.439.4418

raders@hughes.net

3117 US Hwy 67 E • Mt. Vernon, TX 75457

Nine of our most loyal commercial Hereford ranches have donated branded, weaned heifer calves to be put in a pen of ten open heifers to sell in the 2016 Commercial Heifer Sale. These nine ranches represent over 1,100 years of Hereford heritage, over 2 million acres of ranch land and nearly 100,000 Hereford cows. The proceeds of the sale of these heifers is to boost the general operating and promotion account of the Texas Hereford Association.

Bud Brainard Estate
Since 1882
Canadian

Ed Brainard Estate
Since 1927
Canadian

Lewis Roman L Ranch
Since 1973
Valley View

Scharbauer Ranch LLC
Since 1880
Midland & Amarillo

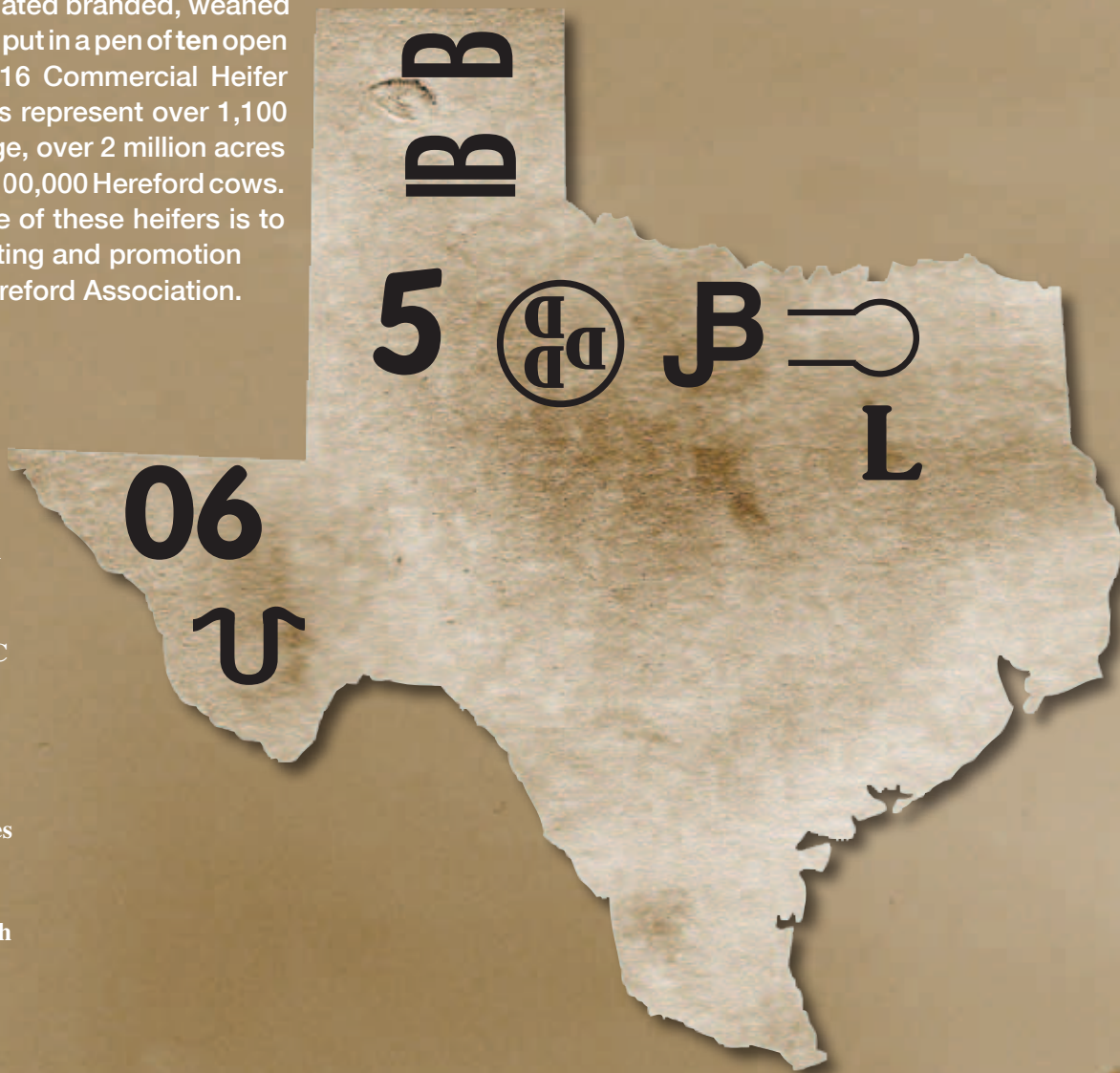
McKnight Ranch Co.
Fort Davis

W. T. Waggoner Ranches
Since 1850
Vernon

Gray Wynn Klein Ranch
Henrietta

Kokernot 06 Ranch
Since 1895
Fort Davis

Bridwell Ranches
Established 1929
Wichita Falls



Own the
Legends
of the
Range
January 31, 2016



Honorary Members

Dale and Mary Barber are the founders of Barber Ranch, an honoree of the TX Family Land Heritage award given for 100 plus years of continuous agricultural production by the same family. Barber Ranch has been family owned and operated since 1904. The Barber name is known prominently throughout the cattle industry for raising



Dale and Mary Barber • Barber Ranch

elite Horned & Polled Hereford cattle. Their bloodlines can be seen throughout Hereford pedigrees worldwide and their cattle excel for both seed stock producers and commercial cattlemen.

For 112 years the ranch has been owned and operated by just one family. It began as a primarily commercial Hereford ranch and farming operation started by Mary Barber's grandfather, James Benjamin Brown. Although there had been registered Herefords since the beginning, the cowherd transitioned entirely to a registered operation in 1950. Dale Barber also grew up on a commercial Hereford ranch before graduating from veterinarian school at Texas A&M University in 1967. From there he served as an officer in the Air Force at which time he met and fell in love with Mary. Dale and Mary got married in the late '60s and moved back to the ranch and took over in the '70s eventually building one of the most renowned registered Hereford ranches anywhere.

Raising Hereford cattle that offer exceptional phenotype and performance while maintaining strong maternal traits has always been a focus at Barber Ranch. The cow herd was comprised entirely of Horned Hereford genetics until the late 1990's. In 1995 the American Hereford Association and the American Polled Hereford Association merged. At that time the vast majority of breeders did not cross horned and polled genetics. However, Barber Ranch was one of the true pioneers in the industry as they crossed the two and did it with great popularity.

Barber Ranch's goal is two-fold. They strive to produce bulls that perform for the commercial cattleman while at the same time producing females that advance Hereford genetics for other seed stock producers. Although they hold an annual bull sale in November aimed at commercial cattlemen and then an annual female sale in December targeting other Hereford seed stock producers – you can still find the same great matings in both sales – and both sales consist of a large proportion of embryo transfer calves.

Dale and Mary have built a foundation for the future that will be continued for years at the ranch. Children: Brett, Terri, Jason & Justin will ensure that the Barber legacy continues to flourish in the future and that registered red and white face cattle will always be a staple north of Channing. The entire family is honored to see the hard work and lifetime dedication to the Hereford breed that Dale and Mary are receiving. ★

John Mehaffey was born and raised in Breckenridge, Texas. He was very active in 4-H and FFA and enjoyed many projects including lambs, breeding sheep, steers, and heifers. He also participated in livestock judging, dairy judging, grass ID, range judging and land judging. Additionally, John was honored to serve as President on the Breckenridge FFA Chapter in 1967-68.



John Mehaffey

Involvement with Hereford cattle began in 1962 when John's Dad, Robert E. Mehaffey and Edwin Sayre established Sayre-Mehaffey Cattle Company. Commercial Hereford cows were utilized in the cow-calf operation and Registered Hereford Bulls. These bulls were purchased from Aubrey Garner in Honey Grove, Texas. John was involved in all aspects of the operation and especially enjoyed helping to make decisions regarding breeding and herd health.

Heifer projects led to cow calf projects and soon John had a small herd of registered Hereford cattle. After graduation from Breckenridge High School in 1968, John attended Texas A&M University as a pre-vet major but those plans were put on hold following a severe automobile accident in October 1968. Having 18 months of physical therapy in Abilene required his education to continue at Cisco Junior College where he earned an Associate degree in 1970. John then returned to Texas A&M to complete his degree. In 1971, John married his sweetheart, Dorothy Phillips, who had just graduated from Texas Christian University. Proceeds from bull sales were used to purchase Dorothy's wedding rings and the home they lived in while John attended Veterinary School at Texas A&M University. In 1974 John completed his degree. Shortly after he was hired as an associate veterinarian at Southside Veterinary Clinic in Fort Worth, Texas where he practiced and eventually owned the practice for many years.

John and Dorothy are blessed with four children, Shannon, Sara, John Michael and Suzanne who were all active in showing barrows, steers, horses and lambs. Shannon and Sara began their show careers and were very successful with Hereford steers purchased from E.P. Chastain at Mockingbird Hill Ranch. Sara was most active in showing quarter horses at halter. John Michael was extremely active and successful in showing barrows and Suzanne showed barrows and was very successful playing softball.

John and Dorothy are extremely proud of their four children and are active in family activities. As five grandchildren came along, it was a natural progression they would be involved in showing and Herefords. Granddaughter Mallorie Phelps has been extremely successful in showing Hereford heifers, bulls, steers

and cow calf pairs. Her brother Garrett has also shown Hereford steers and heifers. The other three grandchildren are still very young but could become more involved in the future.

John is active in many professional organizations including the American Veterinary Medical Association, Texas Veterinary Medical Association, Tarrant County Veterinary Medical Association, and Dairy Shrine Association. The family worships at University Christian Church where John has been an Elder. John is a mentor and sponsor for Hubbard Heights Elementary School where he participates in educational programs for the students including bringing livestock and reading to the students. In 2015, he chaperoned 90 fifth graders on a tour to Texas A&M University. As a 4-H leader in Johnson county, John has volunteered with meat judging, livestock judging, poultry,

swine and veterinary science projects. Additionally, he served as president of the Johnson County 4-H Booster Club for several years.

John has also been active in the Hereford community as a Vice President of the Executive Board of the Texas Hereford Association for several years. His duties included being on several Sale Committees including the Cowtown Select Sale and The Hereford Female Replacement Sale. As an adult advisor for the Texas Junior Hereford Association, John has enjoyed working with the future leaders of the breed and watching them grow and develop their leadership skills.

John has thoroughly enjoyed his involvement with the Hereford breed and the wonderful people associated with the industry. Many lifelong friendships have been forged through Hereford cattle and the Hereford family will always occupy a warm place in his heart. ★

National Hereford Show Honoree

James was born in northeast Tarrant County, Texas, in 1925, the oldest of seven children. His parents were first generation Texans whose families hailed from Alabama and Missouri.

My father was a building contractor who worked on projects in northeast Tarrant County most of his life.

While attending school I enjoyed all manner of athletics: football, basketball and baseball. When not participating in sports I spent much of my time working with my father on construction projects near our home.

Even though I had grown up in the world of building construction I still had a “hankering” for the Old West and the open prairie. As a young boy I read all of the books of Zane Gray and dreamed about being a cowboy riding the Chisholm Trail.

After graduating from high school, in 1943, I served in Merchant Marines for four years.

After returning home I enrolled at North Texas State University and received B.S. and M.S. degrees. During one memorable summer, while in school, I worked on the Break-a-Heart ranch in the Carson Valley near Carson City, Nevada.

While at school I met Louise Carlisle. We married in 1952. She and I and her son Joe moved to Kilgore, Texas after graduation. I taught school and coached football and basketball while Louise ran the school library.

After a few years we moved back to Fort Worth and began working with my father and brothers in the building trades. In 1955 our second son was born and I began a small commercial contracting business.

By 1963 our business had grown and we incorporated Walker Construction Company.

We purchased our first ranch in 1963 and named it the W4, for the four Walkers: Louise, Joe, James, Jr. and myself. It consisted of 1,000 acres, 40 commercial cows, 3 horses, an old Chevrolet pick-up truck and a Ford tractor older than me.

Our construction business continued to prosper. By the mid-1980's it had grown into the largest commercial construction firm in Tarrant County employing over 600 people. By the time I retired from the construction business



James M. Walker • National Show Honoree

in 1990 we had completed over 600 projects in Texas and Oklahoma. These included: the original Texas Rangers' baseball stadium, The Market Center Hotel at the Dallas Market Center, over 150 primary schools, 17 high schools, 8 major hospitals, water-treatment plants and numerous malls. We started all four original terminal buildings at D/FW Airport in 1969 and worked continuously at the Airport for the next twenty years. We restored the Tarrant County Courthouse to its original splendor and did several historical restoration projects.

Our success in the construction industry allowed us to expand the W4 Ranch and improve our herd. Like most cattlemen, herd improvement was foremost in our mind.

I'm not as active in the day-to-day affairs of the Ranch today but our oldest son Joe, our grandson Joey, along with the ranch manager Jeff Chaffin, continue with our strong commitment to the Hereford breed. With the help of my family and valued employees the W4 Ranch and its cattle have continued to develop and improve. We are now a notable registered seed stock producer breeding in excess of 1,000 registered Hereford cows.

It is an honor to be recognized by the Texas Hereford Association. I am grateful and want to express my gratitude and thanks to the Association and its members for their fellowship and camaraderie. They have been a vast source of information and support. ★

Booster of the Year



Cory and son Grady Goswick

Cory is the Owner/Operator of Circle G Cattle in Canton, Texas. He was raised and lived in Kaufman County until 2013 and then moved to Van Zandt County to be closer to his growing ranch operation.

Growing up Cory helped his parents with their Quarter Horse and Beefmaster operations. He also helped his grandfather run his commercial cattle operation all of which are located in Van Zandt County.

After his grandfathers passing in 2007, Cory took over land and ranching operations that have been in his family over 100 years.

In 2010 after attending several sales including the Cowtown Select and Whiteface Replacement Female Sales, Cory's passion for Hereford cattle and the people in the breed grew.

In 2011 Cory culled commercial cattle and started Circle G Cattle, Registered Herefords and bought his first 20 registered cows and a bull, both horned and polled.

What started out as 1 man with 200 acres quickly grew to now over 500+ acres, 100+ head of cattle and is growing everyday. Cory's brothers Cody and Colt Goswick joined the ranching operation in 2013 along with lifelong friend Chris Miklis in 2015.

Cory has one son Grady Goswick who is 4 years old.

Cory is currently a Director in the Texas Hereford Association, Texas Polled Hereford Association and the North East Texas Hereford Association. ★

Friend of THA

Joel Cowley was announced as the president and chief executive officer of the Houston Livestock Show and Rodeo™ in August of 2013. Cowley joined the Show staff in 2005 as the executive director of agricultural competitions and exhibits, where he worked with approximately one third of the Show's volunteer committees while overseeing all aspects of the livestock show, horse show, wine show and auctions.



Joel Cowley

Prior to joining the Show, Cowley worked for Certified Angus Beef LLC, the not-for-profit division of the American Angus Association, where he began as executive account manager in the international division and finished as assistant director of the foodservice division. Before his employment with CAB, he was a faculty member at Michigan State University, where he served as an extension beef cattle specialist and worked with cow-calf and feedlot producers to conduct financial and performance analyses of their operations. He began his professional career as a lecturer and livestock judging team coach at Texas A&M University.

An 11-year 4-H member in Wyoming and Colorado, Cowley was active in livestock projects and a member of a national champion 4-H livestock judging team. He first attended the Houston Livestock Show™ as an intercollegiate judging contestant in 1985 and has participated in every Show since 1988 as a judging team coach, livestock judge or employee. He has judged cattle shows in 30 states, Canada and Brazil.

Cowley holds an associate of arts degree in agricultural education from Northeastern Junior College, a bachelor's degree in animal science from Colorado State University, a master's degree in animal science from Texas A&M University and an MBA from Michigan State University. Cowley is a member of the Texas 4-H Youth Development Foundation Board of Trustees, the Texas FFA Foundation Board of Directors, the Greater Houston Convention and Visitors Bureau Board of Directors, the AdvoCare V100 Texas Bowl Board of Directors, and the Super Bowl LI Community Council.

Cowley and his wife, Tammy, have two daughters and live in Richmond, Texas. ★

Own one.

The THA Commemorative, engraved 45 Caliber Henry Rifle. \$1750.00

Only 75 will be made.

Ten will be given away as awards at the 2016 National Hereford Show, and 65 will be available to first come first served.

 HENRY
Made in America. Or Not Made At All

Call THA to reserve yours. 817.831.3161



GRAND CHAMPION HEREFORD BULL
CHAMPION SENIOR BULL
C CJC ILR REGAL 3174 ET
 Iron Lake Ranch, Athens, TX
 Colyer Herefords, Bruneau, ID
 Curtis & Jackie Castle, Crawford, OK



RESERVE GRAND CHAMPION HEREFORD BULL
CHAMPION YEARLING DIVISION
C BAILEES MILES 4312 ET
 Potter Ranch Herefords, Winton, CA

Reno Celebrates 50 Years

Hereford breeders celebrated the golden anniversary of the Western Nugget National Hereford Show in Reno, Nev., Dec. 3-5.

Gary Kendall, Palouse, Wash., was honored with the Hereford Heritage Award during the event. He managed the Nugget Sale from 1987 to 2007. Also recognized was Sue Hoffman, who has served as the Nugget show secretary since 1988.

Jirl Buck, Madill, OK, judged the 244-head show and said prior to the selection of the grand champion bull. "This show has been incredible. I have never judged a show with the depth of quality that we've had in each class. The number of high-quality individuals in the heifer and bull show has been exceptional."

Buck selected GKB 88X Tailor Made B163 323B and C Candy Cane 4030 ET to top the female shows while C CJC ILR Regal 3174 ET and BF Bar1 10Y Down Home 4111 ET won the bull shows.

GKB 88X Tailor Made B163 323B, by NJW 98S R117 Ribeye 88X ET, was chosen champion horned female after winning the senior calf division. She is owned by Hunter Alexander, Carthage, TX, and was born Sept. 29, 2014. Reserve champion horned female was exhibited by Montana, Chance, Nick and Austin Deppe, Maquoketa, IA. BF B293 Girls Night Out 519C first won the spring calf division and is a March 12, 2015, daughter of GKB 88X Laramie B293.

In the polled show, C Candy Cane 4030 ET came out on top after winning the junior yearling division. She is owned by Piper Colyer, Bruneau, ID, and is a Jan. 4, 2014, daughter of NJW 98S R117 Ribeye 88X ET. Reserve in the polled

female show and champion in the spring yearling division was GKB 9279 Lady Advance 86B, owned by Conner Alexander, Carthage, TX. She is an April 1, 2014, daughter of ECR L18 Extra Deep 9279.

Colyer Herefords, Bruneau, ID; Iron Lake Ranch, Athens, TX; and Curtis & Jackie Castle, Crawford, OK, exhibited grand champion horned bull and champion senior bull, C CJC ILR Regal 3174 ET. He is a Feb. 7, 2013, son of NJW 73S W18 Hometown 10Y ET. The reserve grand champion horned bull first won the yearling bull division. C Bailees Miles 4312 ET is a March 18, 2014, son of C Miles McKee 2103 ET and owned by Potter Ranch Herefords, Winton, CA.

In the polled bull show, intermediate division winner BF Bar1 10Y Down Home 4111 ET was slapped champion. He is owned by Brumley Farms, Orovada, NV, and Bar One Ranch, Eugene, OR, and is a July 16, 2014, son of NJW 73S W18 Hometown 10Y ET. Reserve grand champion polled bull, CRR 5280, is owned by Coyote Ridge Ranch, LaSalle, CO; Bill King, Moriarty, NM; Hirschfeld Group, Galesburg, IL; and Colyer Herefords. He first won the yearling division and is a March 2, 2014, son of CRR 719 Catapult 109.

Gary and Kathy Buchholz of GKB Cattle, Waxahachie, TX, won the polled premier breeder and polled premier exhibitor awards. Junior Hereford member Fallon Gohr won the horned premier exhibitor title and tied with GKB for polled premier exhibitor. Winning horned premier breeder honors was Brumley Farms, Orovada, NV.

Snedden Herefords, Maricopa, CA, won first-place polled get of sire with a group sired BW 5W 38W Beef 172Z. Best six head polled went to Wooden Shoe Farms, Black-



GRAND CHAMPION POLLED HEREFORD BULL
CHAMPION INTERMEDIATE DIVISION
 BF BAR1 10Y DOWN HOME 4111 ET
 Brumley Farms, Orovada, NV
 Bar One Ranch, Eugene, OR



RESERVE GRAND CHAMPION POLLED HEREFORD BULL
CHAMPION YEARLING DIVISION
 CRR 5280
 Coyote Ridge Ranch, LaSalle, CO
 Bill King, Moriarty, NM
 Hirschfeld Group, Galesburg, IL
 Colyer Herefords, Bruneau, ID

foot, ID.

CX Ranch, Pomeroy, WA, won the pen show with three bulls sired by H5 9131 Domino 2185. Reserve champion pen was Sticks & Stones, Cheyenne, WY, with a group sired by GKB 88X Laramie B293, Churchill Sensation 028X and TS Rock Solid 109.

The 187-entry junior show judged by Dave Allan, Schulenburg, TX, was Dec. 3. Piper Colyer, Bruneau, ID, topped the show winning grand champion owned heifer and grand champion bred-and-owned heifer titles with C Candy Cane 4030 ET. She is a Jan. 14, 2014, daughter of NJW 98S R117 Ribeye 88X ET. Reserve champion in the owned heifer show went to Fallon Gohr, Madras, OR, with C Snickers 4045 ET, a Jan. 2014, daughter of NJW 98S R117 Ribeye 88X ET. Candy Cane and Snickers are full sister embryos.

Reserve champion in the bred-and-owned show was also exhibited by Piper Colyer. C Bar1 Serendipity 5054 ET, a Jan. 7, 2015, daughter of WLB Winchester Powerball 27A, took the reserve banner.

In the bred-and-owned bull show, Caitlyn Hartzell, Oakdale, CA, won the champion banner with FPF 302 109 Spectre 504. He's a Jan. 28, 2015, son of CRR 719 Catapult 109. Reserve was Fallon Gohr with C Gohr Thrill Ride 4105, a Jan. 20, 2014, son of C Thriller ET.

The Champion cow-calf pair was exhibited by Bailie Jo Stubblefield, Bend, OR. Her cow, BK MS Penny 3101, by TH 71U 719T Mr Hereford 11X showed with an April 2015 daughter of TH 64U 719T Victor 26X at side.

Reserve champion cow-calf pair was shown by Sallie and Bailey Anderson, Rupert, ID. BSB 165 Glamour 11083, by WSF MC Destination 120J 545 ET, showed with her May 2015 daughter of H5 986 Domino 2132 at side.

Champion steer was exhibited by Tucker Pacatte, Santa

Rosa, CA. His steer, KPH Inside Trader 7Z 16C, by KF Blue Chip 7Z weighed 794 lb. Reserve champion steer honors went to Roslynn McGhehey, Redmond, OR, with BHR Perfect 507. The son of H H Perfect Timing 0150 ET weighed 920 lb.

Additional polled division results

Polled spring calf champion heifer: Fallon Gohr, Madras, OR, with Gohr Platinum 5046

Reserve polled spring calf champion heifer: Carly Wheeler, Paso Robles, CA, with ECR Carla 5492C 1ET

Polled junior calf champion heifer: Piper Colyer, Bruneau, ID, with C Bar1 Serendipity 5054 ET

Reserve polled junior calf champion heifer: Gage and Grady Creamer, Waxahachie, TX; and Gary & Kathy Buchholz, Waxahachie, TX, with GKB 2214 Notice Me Too 20C ET

Polled winter calf champion heifer: Santos Hereford Ranch, Hilmar, CA, with SHR Jackie O 12B

Reserve polled winter calf champion heifer: Kelsie Ward, Blackfoot, ID, with WSF Twice The Lady B205 ET

Polled senior calf champion heifer: Gary & Kathy Buchholz, and Scott Chachere, Dayton, TX, with CHAC 743 Grace 4224 ET

Reserve polled senior calf champion heifer: Hannah and Hadley Harrison, Montague, CA, with H WR 9T Lady Val 4616 ET

Polled intermediate champion heifer: Emilee Holt, Casper, WY, and Bennett Holt, Caldwell, ID, with BF Bar1 88X Lacey 4108 ET

Reserve polled intermediate champion heifer: Sara Mc-



GRAND CHAMPION HEREFORD FEMALE
CHAMPION SENIOR CALF DIVISION
 GKB 88X TAILOR MADE B163 323B
 Hunter Alexander, Carthage, TX



RESERVE GRAND CHAMPION HEREFORD FEMALE
CHAMPION SPRING DIVISION
 BF B293 GIRLS NIGHT OUT 519C
 Montana, Chance, Nick, & Austin Deppe, Maquoketa, IA

Cann, Jacksonville, OR, with BF Bar1 88X Lucy 4109 ET

Reserve polled spring yearling champion heifer: Brandt and Lane Downing, Terrebonne, OR, with DCC Ms Paisley 414

Reserve polled junior yearling champion heifer: Dylan Morish, Port Lavaca, TX, with GKB 1068 Miss Nitro 53B

Polled champion senior yearling heifer: Kelsie Ward, Blackfoot, ID, with WSF Hereford Lady A114 ET

Reserve polled senior yearling champion heifer: Windy R Ranch, Washoes, Valley, NV, with Genoa Miss 719T Victor 13168

Champion cow-calf pair: Brumley Farms, Orovada, NV, Jeremy Reno, Orovada, NV, and Darrel & Elizabeth Reisch, Nampa, ID, with BF 144U Serenity 303A by TH 75J 243R Bailout 144U ET. She showed with a March 2015 daughter of NJW 98S R117 Ribeye 88X ET at side.

Reserve champion cow-calf pair: Sallie and Bailey Anderson, Rupert, ID, with BSB 165 Glamour 11083 with May 2015 daughter of H5 986 Domino 2132 at side.

Polled spring calf champion bull: Blanket Creek Polled Herefords, Vallecito, CA., with BC Duramax 4037 2C

Reserve polled spring calf champion bull: Sarah Clymore, Madras, OR, with JRC Bingo 125 SEC

Polled junior calf champion bull: Piper and Cruz Colyer, Bruneau, ID, with C Black Hawk Down ET

Reserve polled junior calf champion bull: Caitlyn Hartzell, Oakdale, CA, with FPF 302 109 Spectre 504

Polled winter calf champion bull: Gary & Kathy Buchholz with GKB 1094 Domino 387B

Reserve polled winter calf champion bull: Snedden Her-

efords, Maricopa, CA., with SR Beef Optiman 1466

Polled senior bull calf champion: Lindsay, Andrew and Tyler Eldred, Bellingham, WA, with EFH 114 Crackerjack 44B

Reserve senior bull calf champion: Gary & Kathy Buchholz with GLB 108 Velocity 312B ET

Reserve polled yearling champion bull: Fallon Gohr, Madras, OR, with C Gohr Thrill Ride 4105

Additional horned division results

Reserve spring calf champion heifer: Sara McCann, Jacksonville, OR, with BF B293 Addie 516C

Junior calf champion heifer: Sam Taylor, Perkins, OK, with RJ GKB Abigail 5008 ET

Reserve junior calf champion heifer: Dylan Morish, Port Lavaca, TX, with GKB 1206 Miss Maxium 46C

Winter calf champion heifer: Sydney Downey, Lebanon, OR, with KPH Phoebe 14U 46B

Reserve winter calf champion heifer: Suzanna Warner, Marysville, CA., with SS Untapped Charlotte 4017 ET

Reserve senior calf champion heifer: Brumley Farms, Orovada, NV, with BF 88X Lets Dance 4113 ET

Spring yearling champion heifer: Jessica Middleswarth, Torrington, WY, with BF 2395 Tessa 429B

Reserve spring yearling champion heifer: Kylynn Scott, Crawford, OK, with C Bailees McKee 4285 ET

Junior yearling champion heifer: Fallon Gohr with C Snickers 4045 ET

Reserve junior yearling champion heifer: Joel Butler, Republic, MO, with GKB Nancy 29B ET



*GRAND CHAMPION POLLED HEREFORD FEMALE
CHAMPION JUNIOR YEARLING DIVISION
C CANDY CANE 4030 ET
Piper Colyer, Bruneau, ID*



*RESERVE GRAND CHAMPION POLLED HEREFORD FEMALE
CHAMPION SPRING YEARLING DIVISION
GKB 9279 LADY ADVANCE 86B
Conner Alexander, Carthage, TX*

Senior yearling champion heifer: Shelby Burlile, Emmett, ID, with Bird 813 Poinsetta 417

Champion cow-calf pair: Reece Ingvoldsen, Live Oak, CA., with GKB TMH New Era Breeze B275 ET

Spring calf champion bull: Black Hills Herefords, Olympia, WA, with Black Hills Trending 508

Reserve spring calf champion bull: Wooden Shoe Farms, Blackfoot, ID, with WSF First Impression C51 ET

Junior calf champion bull: Fallon Gohr and Cruz and Piper Colyer, Bruneau, ID, with C Miles 5034 ET

Reserve junior calf champion bull: Colyer Herefords with C X142 Stockman 5261 ET

Winter calf champion bull: William Cox, Pomeroy, WA, with CX 2185 Advance 1449

Reserve winter calf champion bull: William Cox with CX 2185 Advance 1461

Senior calf champion bull: Brumley Farms with BF Bar1 Ruger 469B

Reserve yearling champion bull: Gary & Kathy Buchholz with GKB 88X Bryson 37B ET

Additional junior show results:

Spring heifer calf champion: Carly Wheeler, Paso Robles, CA., with ECR Carla 5492C 1ET

Reserve champion spring heifer calf: Fallon Gohr, Madras, OR, with Gohr Platinum 5046

Junior heifer calf champion: Sam Taylor, Perkins, OK, with RJ GKB Abigail 5008 ET

Reserve champion junior heifer calf: Piper Colyer, Bruneau, ID, with C Bar1 Serendipity 5054 ET

Champion winter heifer calf: Meagan and Madison Dewar,

Bakersfield, CA., with MF DF R505 Cassie 14U 12B ET

Reserve champion winter heifer calf: Roslynn McGhehey, Redmond, OR, with BF 2395 Gwen 485B

Champion senior heifer calf: Hannah and Hadley Harrison, Montague, CA., with H WR 9T Lady Val 4616 ET

Reserve champion senior heifer calf: Monty Eskew, Waxahachie, TX, with GKB 058 Cisco Lady 306B

Champion spring yearling: Brandt and Lane Downing, Terrebonne, OR, with DCC Ms Paisley 414

Reserve champion spring yearling: Conner Alexander, Carthage, TX, with GKB 9279 Lady Advance 86B

Champion senior yearling: Shelby Burlile, Emmett, ID, with Bird 813 Poinsetta 417

Champion peewee showman: Fallon Gohr, Madras, OR

Reserve champion peewee showman: Kaitlin Does, Gustine, CA

Champion junior showman: Kathryn Coleman, Modesto, CA

Reserve champion junior: Sarah McCann, Jacksonville, OR

Champion intermediate showman: Brandt Downing, Terrebonne, OR

Reserve champion intermediate: Emilee Holt, Casper, WY

Champion senior showman: Jessica Middleswarth, Torrington, WY

Reserve champion senior: Joel Butler, Republic, MO



Gold TPR Breeders Announced

A record number, 118, Hereford breeders achieved Gold TPR (Total Performance Records) status for spring 2016.

Congratulations to these Texas breeders:

Eric Daniels, Dalhart; Flying S Herefords, Dallas; Indian Mound Ranch, Canadian; JP Family Limited Partnership, San Angelo; Ledbetter Cattle Co., Wheeler; P&J Polled Herefords, La Vernia; Still River Ranch, Van Alstyne; Texas 2T Farms, Nacogdoches; Texas Stardance Cattle LLC, Hamilton; and Trinity Farms, Mount Pleasant. ★

UPCOMING SHOWS & SALES

JANUARY

- 8-9** Sandhills Hereford Shows, Odessa
- 14-16** National Western Stock Show, Denver, CO
- 18** Van Newkirk Herefords Bull and Female Sale, Oshkosh, NE
- 23** Junior Hereford Heifer Show, Fort Worth
- 30** THA Annual Meeting, Fort Worth
- 31** 47th Whiteface Replacement Female Sale, Fort Worth
- 31** Cowtown Invitational Sale, Fort Worth

FEBRUARY

- 1** National Hereford Show, Fort Worth
- 4** Hereford Steer Show, Fort Worth
- 6** South Texas Hereford Association Spring Sale, Beeville
- 6** Messner Herefords Annual Production Sale, Slapout, OK
- 6** Upstream Ranch Production Sale, Taylor, NE
- 15** S.A.L.E. Open Show, San Antonio
- 17** S.A.L.E. All Breed Sale, San Antonio
- 19** S.A.L.E. Junior Hereford Heifer Show, San Antonio
- 19** Hoffman Ranch Bull Sale, Thedford, NE
- 21** San Angelo Stock Show, San Angelo
- 22** Colyer Herefords Production Sale, Bruneau, ID
- 23** Mill Creek Ranch Production Sale, Manhattan, KS
- 24** S.A.L.E. Hereford Steer Show, San Antonio

Western Nugget National Golden Anniversary Sale

Dec. 5, 2015

Reno, NV

Auctioneer: Butch Booker

		Avg.
2 bulls	\$26,500	\$13,250
23 females	\$166,450	\$7,280

Top selling bull sold for \$14,500. High selling female sold for \$42,500.

Barbers Red & White Holiday Lights Sale

Fort Worth, Texas

December 12, 2015

Auctioneer: Dustin Layton

		Avg.
20.5 females	\$519,250	\$25,329
96 embryos	\$91,900	\$957
100 units semen	\$33,750	\$338

TOP SELLING FEMALES PRICE

- Lot X – BR Audrey 4075 ET; 4/12/14; ½ interest to Sullivan Farms, IA; Cottonwood Springs Farm, Cedar, MI; Skiles Family, Dalhart; Reed Farm, CO; Diane Johnson, Ft. Worth. \$105,000
- Lot 1 – BR Veronica 5019 ET; 4/1/15; ½ interest to Davis Herefords, Wheeler \$70,000
- Lot 4 & 5 – BR RCR Anastasia 5505 ET; 1/4/15; BR RCR Anastasia 5506 ET; 1/5/15; ½ interest in both to Joe Carlson, Royal Center, IN \$50,000
- Lot 2 & 3 – BR Daphne 5012 ET; 3/2/15; BR KLD Arielle 5503 ET; 1/2/15; ½ interest in both to Bushy Park, SD \$31,000

- Lot 7 – BR Charlotte 5029 ET; 4/3/15; ½ interest to GKB Cattle, Waxahachie \$33,000
- Lot 10 – BR Gabrielle 518C ET; 5/25/15; GKB Cattle. \$23,000
- Lot 24-25 – BR Gabrielle 5507 ET; 1/6/15; BR Gabrielle 5502 ET; 1/1/15; ½ interest in both to Express Ranches, Inc., Yukon, OK. \$31,000
- Lot 20 – BR Abby 5013 ET; 3/4/15; ½ interest to GKB Cattle \$22,000
- Lot 6 – BR Hillary 5531 ET; 3/23/15; Colyer Herefords, Bruneau, ID. \$20,000
- Lot 17 – BR Victorias Secret 5085; 5/2/15; Colyer Herefords. . \$18,000
- Lot 8 – BR Madeline 5512 ET; 2/20/15; Blackwater Cattle Co. . . \$16,000
- Lot 11 – BR Claudia 509C; 5/11/15; Colyer Herefords \$15,000
- Lot 12 – BR Athena 5009; 2/24/15; Elm Tree Ranch, KY . . . \$13,500
- Lot 19 – BR Demi 5516 ET; 3/11/15; Colyer Herefords \$12,500
- Lot 15 – BR Zoe 5031; 4/3/15; Colyer Herefords \$10,000

TOP SELLING EMBRYOS PRICE

- Lot 39 – 4 embryos (About Time x 3029) @ \$1,700 each to Nolan Herefords, Gilmer
- Lot 40 - 4 embryos (Sensation x 3029) @ \$1,200 each to Blackwater Cattle Co.
- Lot 32 – 4 embryos (Catapult x 8051) @ \$1,200 each to Owl Creek Ranch, Fredericksburg
- Lot 44 – 4 embryos (Hutton x 0026) @ \$1,000 each to Nolan Herefords

Send an effective direct mail piece to your buyers every month

for only

\$15

Give them a gift subscription to *Texas Hereford* magazine
Call today: 817-831-3161 or e-mail texashereford@sbcglobal.net

They will think of you every time they open an issue, and you'll be helping promote the breed.



Texas Hereford AUXILIARY Dues

NAME: _____

ADDRESS: _____

CITY: _____ STATE _____ ZIP _____

PHONE: _____ CELL: _____ FAX _____

E-MAIL: _____

Yes, my contact information has changed, and I have noted the changes in the form above.

No, my contact information has not changed.

Make check payable to: Texas Hereford Auxiliary

Texas Auxiliary Dues: \$20.00

National Hereford Women Dues \$20.00

Total Amount Due: \$40.00

Amount enclosed: \$ _____

Please return payment to:
Texas Hereford Auxiliary Secretary/Treasurer
c/o Texas Hereford Association
4609 Airport Freeway
Fort Worth, TX 76117



Texas Junior Hereford Association State Dues - \$10.00

Date _____

Name _____

Address _____

City _____ State _____ Zip _____

Date of Birth _____ Phone _____

Cell _____ E-Mail Address _____

Classification (grade) in school (current year) _____

Parents' Names _____

Fill out the above form; make checks payable to Texas Junior Hereford Assn.
Return to: Texas Hereford Assn. 4609 Airport Freeway, Fort Worth, TX 76117



Application for Membership in the Texas Hereford Association

Advantages of THA Membership

SERVICE – The Texas Hereford Association is a service organization to benefit the Hereford breed and the breeder.

Members are assisted in buying and selling cattle at private treaty and by auction.

The Texas Hereford Association sponsors the Commercial Hereford Heifer Show and Sale and the Cowtown Select Sale and the THA Fall Classic. These sales promote the use of better Hereford bulls and females. The Texas Hereford Association is also actively engaged in the promotion of Texas Herefords and in sponsoring seminars, field days, and other events to encourage educational opportunities for members.

ASSOCIATION – The Texas Hereford Association was organized in 1899. Its membership has included the elite of the Texas Hereford industry since its inception. Membership dues are \$125.00 per year. Associate memberships are available for \$100.00 per year.

DIRECTORY ISSUE – Every active member of the Texas Hereford Association has a free listing in the Directory issue of *The Texas Hereford*. This Directory is used by thousands of Hereford breeders the year round. Information pertaining to your herd such as herd sires, bloodlines, location of farm or ranch, telephone numbers, etc., will be listed in this widely used reference book. This herd listing alone is worth the price of membership. Associate members are also listed.

THE TEXAS HEREFORD – Monthly publication of the Texas Hereford Association. It is the only publication in Texas devoted solely to Herefords. It includes news about the association, news about Herefords and timely editorial features. Active members can list Herefords for sale **FREE** in the Cattle For Sale column. This service has been responsible for selling thousands of Texas Herefords all over the nation. Texas Hereford Association members may advertise in *The Texas Hereford* at low livestock rates – a considerable savings for your marketing program. Sale catalogs, brochures, flyers, and other marketing aids designed are produced by our professional staff at considerable savings. (Advertising rates will be sent on request).

**The Most Important Investment
You Can Make as a
Registered Hereford Breeder
is a membership in the
Texas Hereford Association.**

ACTIVE Membership Application

I hereby make application for membership in the TEXAS HEREFORD ASSOCIATION.

Upon becoming a member, I will abide by the constitution and By-Laws of the Association and also the rules of the American Hereford Association.

I am the owner of _____ head of registered Herefords and _____ head of commercial cattle.

Attached hereto is remittance of One Hundred and twenty-five dollars. (\$125.00 covers active membership for one year). Dues include a subscription to the *Texas Hereford* magazine and a one year free listing in the "Cattle for Sale" on the THA website and monthly magazine.

Attached hereto is remittance of One-hundred Dollars (\$100.00) covering association membership fee for one year in the Texas Hereford Association. (Includes magazine)

SIGNED _____ DATE _____

RANCH NAME _____

ADDRESS _____

CITY _____

STATE _____ ZIP _____

PHONE _____

SPOUSE'S FIRST NAME _____

ASSOCIATE Membership Application

FIRM _____

ADDRESS _____

CITY _____

STATE _____ ZIP _____

PHONE _____ DATE _____

Attached hereto is remittance of one-hundred dollars (\$100.00) covering associate membership fee for one year in the Texas Hereford Association. (Includes magazine)

Voluntary Contribution THA Foundation (Tax-deductible)

SUBSCRIPTION FORM - \$15.00 per year includes directory issue

NAME _____

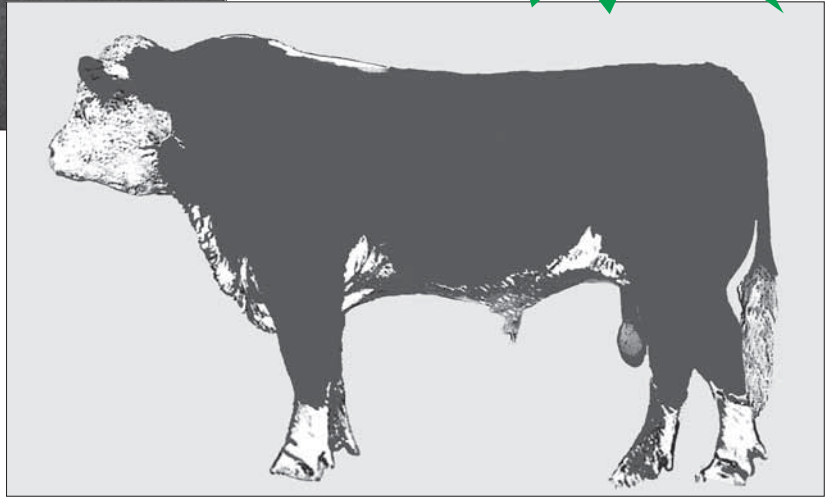
ADDRESS _____

CITY _____

STATE _____ ZIP _____

TEXAS HEREFORD ASSOCIATION

4609 Airport Freeway • Fort Worth, Texas 76117 • Phone 817/831-3161 • Fax 817/831-3162
e-mail: texashereford@sbcglobal.net • www.texashereford.org



Hereford Spoken Here

That's exactly the message that this sizable sign projects!

Constructed of sturdy 16 gauge steel and finished with a baked porcelain enamel, it will stand up to all weather conditions! Three colors – green, white and maroon – make each one a rich display of the Hereford breed.

**The sign is available in two sizes:
30" tall x 38" wide or
38" tall x 60" wide**

Name panels 10" tall are available for one -two lines and 14" tall for three lines.

Please send completed form and check to:
**Texas Hereford Association
4609 Airport Freeway
Fort Worth, Texas 76117**

Yes!

Send me:

Horned

Polled

30"x38" sign with 10"x38" name panel @ \$425.00*

30"x38" sign with 14"x38" name panel @ \$450.00*

38"x60" sign with 10"x60" name panel @ \$725.00*

38"x60" sign with 14"x60" name panel @ \$750.00*

All prices FOB Dallas, TX

*TEXAS RESIDENTS must add 8-1/4% sales tax. Special art work for brands or special type billed at cost.

PLEASE PRINT LETTERING FOR NAME PLATE:

1st line _____

2nd line _____

3rd line _____

Ship by motor freight to:

(must be physical address – no P.O. Boxes)

Phone # for questions

EAST

H² RANCH AND CATTLE CO.
 KEVIN W. HARTLEY
 h2ranch@rodzoo.com
 7787 ROCKY RIDGE LN • MADISONVILLE, TX 77864
 OFFICE: 936-349-0439 MOBILE: 936-661-0306

Noack Herefords
 "Quality Registered Herefords"
7- BULLS FOR SALE 7-
 Office: 512-446-6200 • noackherefords.com

The Doyle Difference
 "Genetics of today's leading performance families."
DOYLE HEREFORD RANCH
 P.O. Box 73 • Wolfe City, TX 75496
 mobile: 214/240-4538
 www.doyleherefordranch.com
 email: mdoyle0326@yahoo.com

Gibbs Ranches
 W. Paris Gibbs, Jr.
 Box 11 • Caldwell, TX 77836
 (979) 567-3740

Herrmann Cattle Co.
 Herefords Since 1938
 P.O. Box 366 • Caldwell, TX 77836 • 979/567-4204
Clay Herrmann Carl Herrmann
 Braford Div. • 979/567-9604 Hereford Div. • 979/567-9465

LEE TERRELL
 REAL ESTATE
 Farms • Ranches
 Commercial • Property Evaluations
 (903) 868-2505 • Res. (903) 893-2289
 cell (903) 815-1299
 2404 San Miguel • Sherman, TX 75092

Still River Ranch
 Larry Woodson • 214-491-7017
 Bonham, Texas
 ranch located 10 miles south of Bonham
 and 1 mile south of Gober

BAR OAK RANCH
 RANDALL & SHERRY BARNES & FAMILY
 HEREFORD BREEDERS
 TOLAR, TEXAS
 (817) 279-3543 Randall
 (817) 243-5867 Craig
 www.baroakranch.com
 email us at:
 herefords@baroakranch.com

DDD DDD DDD
THREE D RANCH
 PAUL DAVIS
 RT. 1, BOX 242 M
 ROCKWALL, TEXAS 75087
 972/771-3396 (RANCH)
 972/771-5653 (OFC.)
 MIKE HAWKINS, MGR.
 972/348-7049 (CELL)

Raising cattle in Texas since 1855
SKRIVANEK RANCHES
 Joey & Susan Skrivaneck, owners
 407 W. Mustang • Caldwell, TX 77836
 Joey res. (979) 567-3857 • cell (979) 224-4698 • office:
 (979) 567-3131 • ranch (979) 272-8133 • fax (979) 567-2373
 9 miles E. of Caldwell on Hwy 21, or 15 miles W. of Bryan-College Station on Hwy 2

WILLIAMS FAMILY HEREFORDS
 Herbert F. Williams • owner/ranch manager
 Office 940-466-3381 • Cell 940-393-1650
 Registered Hereford Cattle • Commercial Cattle
 herbsusan@msn.com • www.williamsfamilyherefords.com
 P O Box 567 • Decatur, TX 76234 • Wise County • Since 1891

Jim G. Bell
 F • A • R • M • S
 "Selling Hereford Bulls Since 1952"
 Off: 936-867-5126 • Res: 936-867-5125
 3275 FM 1819 • Pollok, TX 75969

G3 Harry & Cheryl Grett
 512-303-5714
 P. O. Box 969
 Elgin, Texas 78621
 g3ranch@aol.com

Decker KJB
CATTLE SERVICES
 Custom Fittings
 Junior Show Prospects For Sale
 Hillsboro, Texas
 (254) 582-1952 (972) 938-1952

Sam Dominey • Whispering Pines
 3312B SH 19N
 Huntsville, TX 77340
 936.594.3986 (res)
 936.291.3009 (office)
BULLS FOR SALE

ROCKIN' 4HR RANCH
Bulls & Replacement Heifers Available at All Times
 Dale & Donna Hester
 903-848-9250
 cell: 903-340-5006
 4800 VZCR 2120 • Canton, TX 75103

Jackie Pullen Est. 1985
PULLEN HEREFORDS
 972-571-5906 CELL • 972-722-5081 RES
 460 Pullen Road • Rockwall, TX 75032

Sunny Hill Ranch
 Pete Johnson
 Registered Polled Herefords
 Hwy. 94 West • 5 Miles
 Office 805 Sayer Lufkin, TX 75904
 Office: (936) 632-1465
 Home: (936) 875-2398
 e-mail: pijmhj@yahoo.com

ATLAS FARMS
 Your Texas Meat & Milk Factory
 Claudia, Precious & Jimmy Atlas
 4920 CR 401 • Grandview, Texas 76050
 (817) 790-0202 • (817) 456-4691 (mobile)
 email: atlasfarms@sbcglobal.net

OGKB cattle
 Gary & Kathy Buchholz
 www.gkbcattle.com
 e-mail: gary@gkbcattle.com
 Gary's Cell: 214-537-1285 • Kathy's Cell: 214-537-1306
 P.O. Box 2807, Waxahachie, TX 75168

Mathias
 Registered Herefords & Paint Horses
 Kurt • Brenda
 192 CR 4040 • Mt. Pleasant, TX 75455
 903-572-2396 • kmathias@txk.net

NOLAN HEREFORDS
 Scott, Alise, Ilissa, Bethany & Audrey
 1950 Skylark Rd. • Gilmer, TX 75645
 nolanherefords@aol.com
 www.nolanherefords.com
 Res.: 903-797-6131 • Cell: 903-738-5636

"Stressing Excellence In Polled Herefords"
Larsons' Polled Herefords
 Ken and Carolyn Larson, Owners
 972-223-6450 Office • 972-223-8955 Home
 254-435-6063 Ranch Office • 972-230-0629 Fax
Lee Larson, executive mgr • 972-824-5869 Cell
 2793 F.M. 1991 • Clifton, Texas 76634
 www.larsonspolledherefords.com • RunLRanch@aol.com

IRON Lake Ranch
 Registered Herefords
 Athens, Texas
 www.ironlakeranch.com
 Dimitri Mataragas 214-649-0071
 David Caraway 903-802-3373
 Robbie Schacher 817-219-0102

Circle G Cattle
 Cory Goswick
 Registered Herefords
 (469) 360-4154 Canton, Texas
 CircleGCattle@yahoo.com

Metch POLLED Herefords
 Dams of Distinction Breeder
 Don, Ann and Barbara Metch
 903-848-8614 • 903-848-7366
 Fax 903-848-9064 • Certified Herd #5526
 1259 V.Z. C.R. 2506 • Canton, TX 75103

Make plans to attend
THA Annual Meeting
 January 30, 2016 • Fort Worth

CENTRAL / SOUTH

B "Registered Herefords Since 1938"
DUDLEY BROS. Box 10,
 Comanche, Texas 76442
 Office: 325/356-2284 • Fax: 325/356-3185
 John: 325/356-3767 • Tom R.: 325/356-3918
 E-Mail: John@dudleybros.com

AHA Golden Breeder Award • Est. 1929
LEE HEREFORD RANCH
 Ira F. Lee
 6467 Seawillow Rd. • Lockhart, TX 78644
 512/398-3032
 e-mail: iralee@hughes.net
 Registered Herefords For Sale

C/2
Cattle Co.
 Pearsall, TX
 "For Quality Hereford Cattle
 Bulls & Females
 Call
 Louie & Helen Carroll
 503 #, Trinity
 Pearsall, TX 78061
 830/334-2973

EDGAR HEREFORD RANCH

 Bobby & Agatha
 P.O. Box 68
 4525 Cty Rd 295
 Blanket, Texas 76432
 Cell: 325-642-2651
 email: abedgar@cctc.net

Mockingbird Hill
 Established in 1854
 Bulls, Females, Club Calves
 P.O. Box 516 • Mineral Wells, TX 76067
 817-244-2637 res. or 940-325-2033 ranch
 Ranch located 10 miles south of Mineral Wells on US281

Howard Herefords
 Quality Herefords Since 1950
 Bulls & Females For Sale
 Visitors Always Welcome
 DAVID HOWARD P.O. Box 1039
 830/988-2241 SABINAL, TX 78881


Hidden Oaks Ranch

 Keith, Cindy, Shelby, Koby,
 Harley & Brody Rogers
 171 CR 407
 Hamilton, TX 76531
 (254) 386-5699
 www.hiddenoaksranch.com
 e-mail: hereford@wildblue.net
 "Raising respectable kids and herefords"

MW HEREFORD RANCH
 P.O. Box 1754 • Brownwood, TX 76804
 325/646-0956 or 646-5501 (office)
 "Top Quality Herefords" "Home of Pathfinder"

ROCKIN' W POLLED HEREFORDS

 Maynard Warnken • 979-561-8846
 Kevin Warnken • 979-561-8108
 e-mail: rockinw@cvcx.com
 www.rockinwranch.net
 Fax 979-561-8867 • Drawer 29 • Schulenburg, TX 78956


Jackson Hereford Ranch

 6481 Stephens CR 105
 Ranger, Texas 76470
 Robert & Dena • (254) 647-3671
 Fax (254) 647-3622
 denajackson@agristar.net
 Ranch located 15 miles north of Ranger on FM 207

W. K. GORDON, JR.
RANCHING OPERATIONS
 1546 FM 203
 Walnut Springs, TX 76690
 (254) 797-5322

PERFORMANCE PROGRAM BREEDER
NEEL POLLED HEREFORDS
 Parker Neel • cell (956)763-4640
 Kyle Sandford • (956) 775-8957
 Box 450029 • Laredo, TX 78045

BULLS FOR SALE

LANG HEREFORD RANCH
 CERTIFIED ANXIETY 4th
 6416 CR 3420
 Lampasas, TX 76550
 512/556-6469 • cell: 512/556-7956
 wandalang@wildblue.net

Circle M Ranch

 P.O. Box 405
 Meridian, TX 76665
 Jane S. Murphey
 Manager
 254/855-1276 (cell)
 254/435-2162 (res.)

Registered Herefords since 1956
Winsauer Herefords
 713/471-3994
 P.O. Box 910 • Beeville, TX 78104
 Ranch located 4 miles east of Beeville on Ellis Rd.
 Visitors Welcome

RADER HEREFORDS

 Susan, Mike, Steven, Sara
 Ranch 903.537.7600
 Steven cell 903.439.4418
 raders@hughes.net
 3117 US Hwy 67 E
 Mt Vernon, TX 75457

Ross Wilson Herefords
 Ross Wilson • 254-965-6566
 2305 W. Lingleville Rd., Apt. 22
 Stephenville, TX 76401
 Joe D. Sherrod • 512-809-3470
 Ranch located 4 miles west of Gorman, TX


SCHMIDT HEREFORDS
 RANGE RAISED CATTLE SINCE 1965
 JD, Robert & Larry Schmidt
 (830) 426-3720 ■ (830) 444-9564
 located 13 miles south of Hondo off Hwy. 173

Sjolander Ranches
 George 254-379-8983
 Residence 254-896-2219
 1290 PR 504 • Riesel, Texas 76682


Flying 'S' Herefords
 Registered Line One Herefords • Paluxy, Texas

 Jim Strode James Strode
 214-361-6900 214-533-9669
 Rick Wilson
 817-219-2225
 James.strode@gmail.com

CY
Curtis Younts & Son
 Established in 1959
 Curtis Younts, Jr.
 3648 Elmer King Rd. • Belton, TX 76513
 254/939-6492 (residence) 254/760-0243 (cell)

Muleshoe Ranch

 Established 1878
 J.T. Echols DVM
 P.O. Box 709 • Breckenridge, TX 76424
 Office: (254) 559-9739
 Mobile: (254) 559-0156
 muleshoeranch@gmail.com
 muleshoeherefordandangus.com

WESLEY THEURET
 Res./Ranch: 830-583-3365
 Cell: 210-315-0103
 2348 CR 165 • Kenedy, TX 78119-5101
 theuret@sbcglobal.net

ALPHA EQUINE BREEDING CENTER
 Hereford Bulls with Eye Pigment Breeder of great Cutting Horses

 M.C. Baker, DVM
 Clint Baker, Mgr. • 817-279-8275
 www.alphaequine.com
 2301 Boyd Road • Granbury, TX 76049
 Fax 817-279-7621

RSS R. SCHLEGEL & SONS

 Route 2, Olney, TX 76374
 Registered Herefords Since 1974
 Bulls, Females, Club Calves
 email: rsshrfd@brazosnet.com
 Ranch (940) 873-4437 Home (940) 873-4621

Moscattelli Hereford Ranch
 Charles Moscattelli
 4267 FM 1685, Victoria, TX 77905
 Res.: 361-575-8766 • Mobile: 361-550-2897
 Cattle for sale private treaty and at annual South Texas Hereford Association sales

WEST

Ledbetter Cattle Co.

Joe Dan Ledbetter • 806-236-0958
P.O. Box 266 • Wheeler, TX 79096
joedan@ledbettercattleco.com
www.ledbettercattleco.com

Honeymoon Herefords

"Breeding cattle for the 21st century."
Robert L. Mezger
614 Honeymoon Ranch Rd.
Marble Falls, TX 78654
830/598-2258

B-BAR-HEREFORDS

Brad, Glenna, Lyndi,
Hunter & Danci Stuart
876 SH 705
Roby, Texas 79543
Res. (325) 235-5402
Mob. (325) 338-5111
"Visitors Are Always Welcome"

SPEARHEAD RANCH

Paul and Sheila Funk • 254-289-7657
525 County Road 51
Copperas Cove, TX 76522-7004
sheilafunk@aol.com • www.spearheadranch.net



GRUBBS CATTLE CO.

Dublin, Texas
Bulls, Heifers & Club Calves
Ryan: 817-366-6376
Bill: 817-366-1426

Cole & Susan Turner
940-742-3347
Rt. 1, Box 254
Rochester, TX 79544

CASERANCH HEREFORDS

Box 1218 Eldorado, TX 76936
Ranch: 325/853-2368 FAX: 325/853-2681
Pete Case: 325/650-6209 http://www.caseranch.com
email: pete@caseranch.com
Ranch Rd. 915 - Between Eldorado and Mertzon

David Moore
325/576-3684 ofc.
325/576-2205 res.
e-mail: info@piedpiperfarms.com
website: www.piedpiperfarms.com



P.O. Box 309
HAMLIN, TEXAS 79520

Coates Ranch Co.

www.coatesranch.com
Box 645 • Mertzon, TX 76941
Steve Wayne: 325-835-2531
Stephen: 325-226-4184
Email: scoatesjr@yahoo.com

McINNIS CATTLE COMPANY

Est. 1896
e-mail: mcinnis@centex.net
www.mcinniscattle.com
14200 Highway 183 N. • May, TX 76857

Bill McInnis
325-646-3884 home
325-646-3234 fax
Ben McInnis
325-646-4134 home
325-647-4159 cell
Bill's cell:
325-642-8823

YOUNGBLOOD RANCH "Registered Herefords Since 1937"

Arian Youngblood
2500 E. Hwy. 180
Lamesa, TX 79331
806/497-6412
Mobile: 806/759-8102



J-HEREFORD RANCH

Bull & Heifers for Sale
Jim Darnell - Owner
5 Paseo de Paz Lane, El Paso, TX 79932
915-479-5299 (Jim's Cell) • 915-549-2534 (Sue's Cell)
915-532-2442 (Office) 915-877-2535 (Home)
email: barjbarherefords@aol.com
"Texas' Only Hereford Operation West of the Rio Grande"
Se Habla Espanol

POWELL HEREFORDS

JAMES L. POWELL
FT. MCKAVETT, TEXAS 76841



OFFICE: (325) 653-1688
WWW.POWELLRANCHES.COM
JLPOFFICE3@GMAIL.COM
DAVID NEAL, RANCH MANAGER (325) 651-2826
BRITT MYNATT, HERD MANAGER (325) 853-2202

KNOX Y HEREFORDS

Tee Knox
Box 68 • Tarzan, TX 79783
432/459-2273
www.knoxherefords.com
Cattle for sale at the ranch.

McKNIGHT Ranch Co.

Bobby McKnight, Ranch Manager
432/426-3003
P.O. Box 1042 • FT. DAVIS, TEXAS 79734

ROCKING CHAIR RANCH

L.C. Whitehead, Owner
Randy Wood, Mgr. • 325/396-4911
Mark McClintock, Consultant
Mobile: 325/650-4223
5749 Rocking Chair Lane
Ft. McKavett, TX 76841



BUTTON ESTES RANCH, LTD.

BUTTON ESTES, JR. & PATRICIA ANN ESTES
1921-1998 GENERAL PARTNER
432/683-1406 • Fax 432/570-7769
2000 WEST TENNESSEE • MIDLAND, TEXAS 79701
BEAU & BARBARA 432/682-2272 • GINNY 432/687-2454

RAFTER J CATTLE CO.

Colt Johnson • 325-280-7975
Larry Johnson • 325-692-3940
1917 Hillside Rd • Abilene, TX 79603
rafterj@dishmail.net • www.rafterjcattle.com



WEINHEIMER RANCH, INC.

Established in 1921
For All Your Cattle Needs

Box 327
Roy 830/644-2226 Stonewall, TX 78671 Len 830/889-2026

Mimms Herefords

Jere, Brady, Rhett & Ryan
Lorenzo, Texas
806-842-3459

LINE ONE HEREFORDS

Light Birth Weights • Gentle Disposition
Milk and Growth • Longevity
CIRCLE ME RANCH Gardendale, TX • Seminole, TX
Miles and Mary Eckert
16020 N. Wichita Ave. • Gardendale, TX 79758
432/563-2627 (Res.) • 432/559-9667 (Off/Ranch)



Since 1947

Walker Herefords

Stamford, TX • La Grange, TX
Don 325-773-2062
Tom 979-247-4119 • Cell 979-966-8353

Show Steers For Sale

MANN Mark, Briss, Hadley, Lauren
and Colby Mann
CATTLE CO. Hadley (cell) 432-788-8375
Mark 432-788-7075
LUBBOCK, TX Res. 806-762-8697
e-mail: mannmen1@yahoo.com
www.manncattle.com
The Functional Kind

SCHARBAUER RANCH LLC

Known for the best commercial Herefords
and ranch horses in the state.
To purchase Hereford females or horses call:
Chris Scharbauer
Office 806-342-5555 • Cell 806-679-7995
P.O. Box 50008 • Amarillo, TX 79159



CLYDE HENSON

P. O. Box 820 • Kermit, TX 79745
432-940-8882



Massey Hereford Ranch

Sam and Kila Massey
P. O. Box 518 • Wickett, TX 79788
P. O. Box 691 • Stephenville, TX 76401
432-940-7720
samhereford@yahoo.com
www.masseyherefordranch.com



47th ANNUAL


WHITEFACE
REPLACEMENT FEMALE SALE
JANUARY 31, 2016 • FT. WORTH, TX

PANHANDLE / OUT-OF-STATE / COMMERCIAL




E&E RANCHES, INC.
Jo Ellard, Owner
 P. O. Box 802207 • Dallas, Texas 75380
 Office (972) 532-2100 • Fax (972) 532-2190

Ray Meyer, Manager
 RR 1, Box 108A • Fall River, Kansas 67047
 (620) 658-4494 • Fax (620) 658-4426



TOMMY BARNES
 -AUCTIONEER-
 189 River Road
 Lowndesboro, AL 36752
 334/462-4004

BARBER RANCH
 Channing, Texas 79018
 Dale & Mary Barber 806/235-3692
 Justin Barber 806/681-5528
 www.barberranch.com
 email: barberranch@wildblue.net

Glynn Debter
 (205) 429-2040
Perry Debter
 (205) 429-4415
 Fax
 (205) 429-3553

4134 Co. Hwy. 30 • Horton, AL 35980

LEO CASAS, III
 Off: 361-362-COWS • Fax 361-362-1035
 Cell: 361-362-5863
 casascattle@hotmail.com
 171 Fairway Ridge • Beeville, TX 78102

B & C CATTLE CO.
Bill or Chad Breeding
 1301 N. Lions • P.O. Box 186
 Miami, TX 79059 (806) 868-4661 or (806) 570-9554
 breeder@amaonline.com

H B & H Herefords
Phil Harvey, Jr.
 575-524-9316
 Cell 575-644-6925
 P. O. Box 40
 Mesilla, NM 88046
 Philharveyjr@comcast.net

Jim Bob Burnett
 Cell 575-365-8291
 205 E. Cottonwood Rd.
 Lake Arthur, NM 88253
 jbb@pvtnetworks.net
 bhherefords.com

AUCTIONEER • SALE MANAGEMENT
 MARKETING AND CONSULTING

SCHACHER AUCTION SERVICES

 Robert Schacher 817-219-0102
 www.schacherauction.com
 LIVESTOCK MORTALITY INSURANCE

Mike & LaReshia Bragg

 1923 Shawnee Trail
 Dalhart, TX 79022
 home 806-249-5367
 cell: 806-333-4486
 website: mlcattle.com • Email: mlcattle@mlcattle.com

Copeland Herefords
 www.copelandherefords.com
 859 Romero Rd • Nara Visa, New Mexico
 Clifford Copeland • 575.633.2251
 Cliff Copeland • 575.403.8123
 Matt Copeland • 580.336.8284




Silveus
 INSURANCE GROUP
 877.773.9633
 www.rangelandinsurance.com

DAUER HEREFORDS
 Continuing a legacy...
 Quality Hereford cattle since 1934.
 Registered Hereford bulls, heifers and Black Baldies for sale.
 Justin Paul Dauer
 997 County Road P • Panhandle, Texas 79068
 806-683-7073 • 806-537-5294

PÉREZ Michael & Connie PEREZ
 575/633-2038
 CATTLE COMPANY
 Michael's cell • 575-403-7970
 Kyle's cell • 575-403-7971
 Drew's cell • 575-403-7115
 901 Quay Road 96 • Nara Visa, NM 88430

LARGENT and SONS
 Hereford Cattle Since 1902
 P.O. Box 66 • Kaycee, WY 82639
 307-738-2443 or 307-738-2297
 Sale Date: November 17, 2016
 largentandsons@yahoo.com
 www.largentandsons.com



Indian Mound Ranch
 923 Hillside Ave. • Canadian, TX 79014
Lee & Jacqui Haygood
 Res: 806/323-8232
 Cell: 806/323-2906
 Email: lee@indianmoundranch.com
 www.indianmoundranch.com


DUFUR HEREFORDS
 P. O. Box 166 • Caddo, OK 74729
 Bill Dufur • 580-367-9910
 Alan Dufur • 580-775-3830

MILLIGAN HEREFORDS Since 1919
Kings, IL 61068
 Robert (815) 562-6391 James (815) 562-4946
 Malcolm (815) 562-5879

Since 1908
Pronger Brothers
 Breeders of
 Registered Hereford Cattle
 Stratford, Texas 79084
 Phone: 806/769-4474 or 4473

MESSNER HEREFORDS

 Milton Messner (580) 837-5384 Van Messner (580) 837-5532
 Route 1, Box 350 • Laverne, OK 73838



PRAIRIE MEADOW HEREFORDS
 2620 E. Lake Shore Drive • Springfield, IL 62707
 Office (217) 529-8878 • Fax (217) 529-9374
 Greg (217) 498-7095 • Gail (217) 529-4933
 Mark and Carla (217) 483-5651




Quality Herefords For Sale
SUMMEROUR RANCH
 Allan Ricketson, Ranch Manager
 Res: 806-384-2177 • Cell: 806-333-0624
 806/384-2110 • 4438 FM 3212 • Dalhart, TX 79022

S - W HEREFORDS
 BENNINGTON, OK
 Ryan Westbrook 580-775-8053 Neal Spencer 817-845-1382
 www.swherefords.com




HOLDEN HEREFORDS
 "The Best in Line 1 Breeding"
Jack and Tresha Holden
 3139 Valier Dupuyer Rd. • Valier, MT 59486
 406-279-3301
 406-279-3300 Ranch • 406-450-1029 Mobile
 www.holdenherefords.com



Whitaker Farms
 Flying 5 Herefords
 Steve and La Nell Whitaker
 120 CR 291 • Hart, TX 79043
 806-285-2716 • cell 806-774-7598
 whitaker@amaonline.com
 whitaker-farms.com

ALLAN RICKETSON
Ricketson Herefords
 806-333-0624
 4440 FM 3212 • Dalhart, TX 79022



1/5 HOFFMAN RANCH
 modern, stout, functional
 Denny and Dixie Hoffman 530-336-5778
 Jason and Kaycee Hoffman 530-604-5096
 P.O. Box 287 Thedford, NE 69166
 jason@hoffmanranch.com
 www.hoffmanranch.com

COMMERCIAL

HIGH COUNTRY PLASTICS

Water Tanks • Slow-Feeder Saver
Corporate • Caldwell, ID
800.388.3617
www.highcountryplastics.com

Mark & Teresa McClintock

Registered Herefords • Sales and Consulting
Mark (325) 650-4223 • Teresa (325) 763-9202
10614 Mule Creek Road • San Angelo, TX 76901
mcclintock@wcc.net • markandteresamcclintock.com

JOHNSON CATTLE MARKETING

Tom Johnson
440 FM 246 • Wortham, TX 76693
903/599-2403 • cell: 817/291-5121
e-mail: tom@johnsoncattlemarketing.com
website: www.johnsoncattlemarketing.com

Y-TEX Corporation

Superior Value • Proven Performance
I.D. Ear Tags • Insecticide Ear Tags
Brute® Pour-on for cattle • RFID Systems
www.ytex.com
e-mail: ytexinfo@ytex.com

Livestock Insurance • Real Estate



HOWARD MILLER, INC.
P.O. BOX 122537 • FORT WORTH, TEXAS 76121
817.732.1872

Howard Miller David Miller
Representing American Livestock, a Division of Markel Service Inc.



Steele Embryo Service

DR. MARK E. STEELE EMBRYO TRANSFER SERVICE
Embryo Transfer, Freezing, Sales
126 Fawn Trail
Graham, TX 76450
(940) 549-8117
(940) 549-2936
(940) 704-2253 Mobile

REGER BREEDING SERVICE
Donor & Recipient Management
GARY & HARRIETT REGER
HC 60 Box 315
Graham, TX 76450
(940) 549-0919 Fax
(940) 521-1291 Mobile

STONE

MANUFACTURING & SUPPLY COMPANY
Quality • Service • Innovation
Livestock I.D., Handling & Show Equipment
1212 Kansas Ave., Kansas City, MO 64127
816-231-4020 • Fax 916-241-3336
www.stonemfg.net

Pre-press production of *Texas Hereford* magazine since 1995



We'll make you look great on paper.

Park Place Enterprises, Inc.
817-877-8901 • ggpark@flash.net

SVES STROUD VETERINARY EMBRYO SERVICES, INC.

Brad K. Stroud, DVM • 817-599-7721
brad@stroudet.com • sherry@stroudet.com
6601 Granbury Hwy. • Weatherford, TX 76087
Fax 817-596-5548
bstroud@biotechproductions.com

Midcontinent Livestock Supplements MLS Forage Enhancing Program

www.mlstubs.com



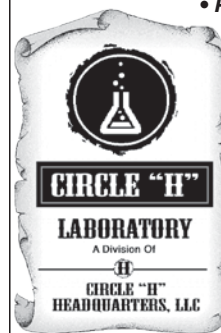
Kyle Latham
254-715-2162
Valley Mills, TX

Circle H Headquarters, LLC

• Pregnancy ELISA testing

• BVD PI Testing

• NIR Feed & Forage Testing



Angela M. Daniels, DVM
C. Scanlon Daniels, DVM
PO Box 1150
3216 US Hwy 54 East
Dalhart, TX 79022
806-244-7851 office
806-333-2829 Scanlon
806-333-2830 Angela
www.circleh.info
scanlon@circleh.info



Gorman Milling Co., Inc.

Manufacturer of

Red Chain Feeds

Gorman, TX

(800) 588-2252

REDCHAINFEEDS.COM



www.ezylift.com

John Winsauer

713.614.9005

win@ezylift.com

★ events CALENDAR

Jan. 8-9: Sandhills Hereford Shows, Odessa
Jan. 14-16: National Western Stock Show, Denver CO
Jan. 18: Van Newkirk Herefords Bull and Female Sale, Oshkosh, NE
Jan. 23: Junior Hereford Heifer Show, Fort Worth
Jan. 30: THA Annual Meeting, Fort Worth
Jan. 31: 47th Whiteface Replacement Female Sale, Fort Worth
Jan. 31: Cowtown Invitational Sale, Fort Worth

Feb. 1: National Hereford Show, Fort Worth
Feb. 4: Hereford Steer Show, Fort Worth
Feb. 6: South Texas Hereford Association Spring Sale, Beeville
Feb. 6: Messner Herefords Annual Production Sale, Slapout, OK
Feb. 6: Upstream Ranch Production Sale, Taylor, NE
Feb. 15: S.A.L.E. Open Show, San Antonio
Feb. 17: S.A.L.E. All Breed Sale, San Antonio
Feb. 19: S.A.L.E. Junior Hereford Heifer Show, San Antonio
Feb. 19: Hoffman Ranch Annual Bull Sale, Thedford, NE
Feb. 21: San Angelo Stock Show, San Angelo
Feb. 22: Colyer Herefords Production Sale, Bruneau, ID
Feb. 23: Mill Creek Ranch Production Sale, Manhattan, KS
Feb. 24: S.A.L.E. Hereford Steer Show, San Antonio

Mar. 2: HLSS All Breed Sale, Houston
Mar. 5: HLSS Hereford/Polled Hereford Open Show, Houston

Mar. 5: W4 Ranch Production Sale, Morgan
Mar. 11: HLSS Junior Polled Heifer Show, Houston
Mar. 11: WBHA National Show, Waxahachie
Mar. 12: HLSS Junior Hereford Heifer Show, Houston
Mar. 12: The Black Hereford Sale, Waxahachie
Mar. 12: NETHA 64th Annual Sale, Mt. Pleasant
Mar. 14: Holden Herefords Sale, Valier, MT
Mar. 15: Cooper Hereford Ranch Sale, Willow Creek, MT
Mar. 17: HLSS Hereford Steer Show, Houston
Mar. 22: Flying S Herefords Production Sale, Paluxy

Apr. 2: MW Ranch Production Sale, Brownwood
Apr. 8-10: TSCRA Convention, Fort Worth
Apr. 9: TJHA TAC Conference, Fort Worth
Apr. 9: Muleshoe Ranch Range Ready Angus & Hereford Bull Sale, Breckenridge
Apr. 16: Cross Timbers Hereford Association Sale, Salado
Apr. 16: Stuber Hereford Ranch Production Sale, Bowman, ND
Apr. 16: Burns Farms Production Sale, Pikeville, TN
Apr. 23: Doyle Hereford Ranch Sale, Wolfe City

May 14: Hereford Alliance Sale, Clifton

June 15-18: TJHA-TJPHA Combined State Show, Belton

Herefords

FOR SALE

3 yearling bulls for sale. HH Advance / Pioneer bloodline.

Contact: Dave Atkins
Forestburg, TX 76239
214-250-2964
datkins@pbsteel.com

3 - 18 mo. old Polled bulls for sale.

Contact: M.C. Baker, D.V.M.
Alpha Equine
Granbury, TX 76049
817-559-0288 (cell)

40 head of 2015 spring bull calves for sale. All are raised in rocky country. Located at Pinon, NM. Like us on Facebook.

Contact: B&H Herefords
Jim Bob Burnett
575-365-8291
Phil Harvey, Jr.
575-644-6925
www.bhherefords.com

Hereford Bulls for sale in East Texas. 45 breeding age bulls, tested, hot and ready to work! Mostly horned, but a few good polled bulls as well.

Contact: Jim G. Bell Farms
Pollok, TX 75969
936-867-5126 (office)
936-366-2574 (cell)

Bulls for sale.

Contact: 3-B Herefords
J.H. Blankinship
Paris, TX 75460
903-784-2677

13 fall yearling bulls.

Contact: Jack Chastain
Mockingbird Hill Herefords
Mineral Wells, TX 76067
817-821-3544

Two Revolution X51 sired bulls for sale. Both have exceptional GE-EPD profiles - they are on AHA Top 200 CHB\$ bull calf list. Out of Durango and Redeem cows. CHH LMD CACTUS 5001, #43563945; CHH JHD BUFFALO 5005, #43570282.

Contact: Scanlon Daniels
Circle H Headquarters, LLC
Dalhart, TX 79022
806-333-2829
scanlon@circleh.info

6 yearling Line One bulls for sale.

Contact: Bar J Bar Hereford Ranch
El Paso, TX 79932
Jim Darnell 915-479-5299
jdarnell@jdarnell.com
Sue Darnell 915-549-2534
Sdar88@aol.com
barjbarherefords@aol.com

5 yearling bulls for sale.

Contact: Doyle Hereford Ranch
Wolfe City, TX 75496
214-240-4538 (cell)
mdoyle0326@yahoo.com
http://www.bullshop.com/tx/
doyleherefordranch.php

20 Head of Service Age Polled and Horned Bulls with available scan data. Excellent EPDs; Some heifer bulls, all bred for Fertility and Growth! SPECIAL: 15 head weaned polled and horned Bull Calves: Grow Them Out Yourself!!

Contact: Paul Funk
Spearhead Ranch
Copperas Cove, TX 76522
254-289-7657

Breeding age bulls, show heifers, cow, pairs available at all times.

Contact: H2 Ranch
Madisonville, TX 77864
936-349-0439
h2ranc@rodzoo.com
www.H2RanchandCattle.com

Consistent quality bulls available from proven P606, Logic, Online, Garrett bloodlines: 24- 2 yr. olds ready to go; 25- 14-17 month old long yearlings; 28- 8-11month old development bulls.

Contact: Dale Hester
Rockin 4H Ranch
Canton, TX 75103
903-340-5006

7 yearling bulls for sale.

Contact: Pete Johnson
Sunny Hill Ranch
Lufkin, TX 75904
936-632-1465 (days)
936-465-1672 (cell)

2-1 year old Registered horned Hereford heifers. Straight Anxiety 4th.

Contact: Roland Lang
Lampasas, TX 76550
512-556-7956 (cell)
wandalang@wildblue.net

Ten bulls for sale.

Contact: Jerry or Cindy Leaverton
Fairview Hereford Farm
Henrietta, TX 76365
940-538-4041
940-867-7196 (cell)

5 bulls available, ranging from 12 to 15 months old, both Horned and Polled. Contact Bill or Ben for more information.

Contact: McInnis Cattle Co.
May, TX 76857
325-642-8823 Bill McInnis
325-647-4159 Ben McInnis

5 spring heifers, 3 polled and 2 horned, all fancy grade show prospects or great replacements with numbers to match; sired by Churchill Red Bull 2002 and H Victor Excel. 1 polled breeding age virgin bull, sired by H Victor Excel. Reasonable prices - videos available.

Contact: Foster /Meeks Herefords
Whitesboro, TX 76273
903-814-4083

Breeding age Horned Hereford Bulls for sale. Several to choose from.

Contact: Sjolander Ranches
Riesel, TX 76682
254-379-8983 George's cell

30 fall yearling bulls.

Contact: Summerour Herefords
Allan Ricketson
Dalhart, TX 79022
806-333-0624

10 Registered bulls for sale, 14 to 15 months old horned & polled.

Contact: Rick Tisdale
TT Hereford Ranch
Llano, TX 78643
325-423-2509

2 Breeding age Hereford bulls for sale.

Contact: Steve Whitaker
Flying 5 Herefords
Hart, TX 79043
806-774-7598 (cell)

ACTIVE MEMBERS RUNNING A
MINIMUM 1" CLASSIFIED AD
EVERY MONTH

can list cattle for sale **FREE** on this
page non-member rate: \$50 e-mail:
texashereford@sbcglobal.net

★ advertisers INDEX

ALPHA EQUINE BREEDING CENTER	48	FLYING 'S' HEREFORDS	48	MCMULLIN RANCH	6, 12	SCHARBAUER RANCH LLC	49
ATLAS FARMS	47	GIBBS, W. PARIS	47	MESSNER HEREFORDS	13, 50	SCHLEGEL, R. & SONS.	30, 48
B&C CATTLE CO.	50	GORDON RANCH, W. K.	48	METCH POLLED HEREFORDS	47	SCHMIDT HEREFORDS	48
B&H HEREFORDS	50	GRETT, HARRY & CHERYL.	47	MEZGER, JEFF (HONEYMOON HEREFORDS)	49	SILVEUS INSURANCE	50
BARBER RANCH	50	GRUBBS CATTLE CO.	49	MIDCONTINENT LIVESTOCK SUPPLEMENTS	16, 51	SJOLANDER RANCHES	48
BARNES, RANDALL & SHERRY	47	H2 RANCH & CATTLE CO.	47	MILL CREEK RANCH.	18	SKRIVANEK RANCHES.	47
BARNES, TOMMY	50	H RANCH	24	MILLER, HOWARD	51	SNEED-POOL CATTLE CO.	24
BELL FARMS, JIM G.	47	HENSON, CLYDE.	49	MILLIGAN HEREFORDS.	23, 50	SOUTH TEXAS HEREFORD ASSN.	14
BRAGG, MIKE & LARESHIA	50	HERRMANN CATTLE CO.	47	MIMMS HEREFORDS.	49	SPEARHEAD RANCH.	49
BRAINARD CATTLE CO.	22	HIDDEN OAKS RANCH	48	MOCKINGBIRD HILL.	48	STEELE EMBRYO.	51
BUCHHOLZ, GARY AND KATHY	3, 47	HIGH COUNTRY PLASTICS	51	MOSCATELLI HEREFORD RANCH	48	STILL RIVER RANCH.	47
BUCK CATTLE CO.	31	HOFFMAN RANCH	19, 50	MULESHOE RANCH	48	STONE MANUFACTURING.	51
CARROLL, L.J. (C2 CATTLE CO.)	48	HOLDEN HEREFORDS	50	NEEL POLLED HEREFORDS	48	STROUD VETERINARY EMBRYO SERVICES, INC.	51
CASAS, III, LEO	50	HOOFSTOCK GENETICS.	16	NOACK HEREFORDS, LLC	47	STUART, BRAD	49
CASE RANCH	49	HOWARD HEREFORDS	48	NOCK HEREFORDS, LLC	47	SUMMEROUR RANCH	23, 50
CIRCLE G CATTLE.	47	INDIAN MOUND RANCH.	50	NOLAN HEREFORDS.	47	3 H RANCH.	10
CIRCLE H LABS.	51	IRON LAKE RANCH.	47	101 DIAMOND S CATTLE CO.	23	TERRELL, LEE.	47
CIRCLE M RANCH.	48	JACKSON HEREFORD RANCH	48	PARK PLACE ENTERPRISES	51	THEURET, WESLEY.	48
COATES RANCH CO.	49	JC CATTLE CO.	33	PÉREZ CATTLE CO.	50	THORNBERY, SANDY.	24
COLYER HEREFORDS.	17	JOHNSON CATTLE MARKETING	51	PIED PIPER FARMS	49	TRIPLE L RANCH	11
COPELAND HEREFORDS & SONS LLC	50	JOHNSON, PETE	47	POWELL, JAMES L.	49	TURKEY FEATHER RANCH	28
COX CONCRETE PRODUCTS	16	KING HEREFORDS, BILL	26	PRAIRIE MEADOW HEREFORDS	50	TURNER, COLE & SUSAN	49
DANGELMAYR BROS.	22	KNOX TY HEREFORDS	49	PRAIRIE ROSE CATTLE CO.	28	UPSTREAM RANCH.	15
DARNELL, JIM	22, 49	LANG, ROLAND	48	PRONGER BROS.	50	VAN NEWKIRK HEREFORDS	21
DAUER HEREFORDS	22, 50	LARGENT & SONS.	3RD COVER, 50	PULLEN, JACKIE	47	W4 RANCH	9
DAVIS, PAUL	47	LARSON POLLED HEREFORDS	47	RADER HEREFORDS	34, 48	W-W LIVESTOCK SYSTEMS.	12
DEBTER HEREFORD FARM	50	LEDBETTER CATTLE CO.	49	RAFTER J CATTLE CO.	32, 49	WALKER HEREFORDS	49
DECKER CATTLE SERVICE.	47	LEE, IRA	48	RED CHAIN FEEDS	16, 51	WEINHEIMER RANCH, INC.	49
DOMINEY, SAM.	47	LOCKLEAR, WARD (MW HEREFORDS)	8, 48	RICKETSON, ALLAN	50	WHITAKER FARMS	50
DOYLE HEREFORD RANCH	47	LORENZEN FARMS	30	ROCKER B RANCH	24	WILLIAMS FAMILY HEREFORDS	47
DUDLEY BROS.	4TH COVER, 48	MANN CATTLE CO.	29, 49	ROCKIN 4H RANCH.	1ST COVER, 47	WILSON, ROSS	48
DUFUR HEREFORDS	50	MASSEY HEREFORD RANCH	49	ROCKIN' W POLLED HEREFORDS	48	WINSAUER HEREFORDS	48
ECKERT, MILES & MARY	49	MATHIAS, KURTIS.	47	ROCKING CHAIR RANCH	49	WOMACK, LARRY	23
EDGAR HEREFORD RANCH.	5, 48	MCCLINTOCK, MARK & TERESA	51	S-W HEREFORDS.	32, 50	Y-TEX CORP.	51
ELLARD, JO	50	MCCINNIS CATTLE CO.	49	SAN ANTONIO LIVESTOCK SHOW	20	YOUNGBLOOD, ARLAN.	49
ESTES RANCH, BUTTON	49	MCKNIGHT RANCH CO.	49	SCHACHER AUCTION SERVICES	50	YOUNTS & SON, CURTIS	1, 48
EZY-LIFT	51						

GEARED FOR YOUR GOALS!



DESERT ★ MART *Exists for You!*

HERE'S WHAT WE HAVE LEARNED:

- **YOU WANT CATTLE** TO BE TROUBLE-FREE. THEREFORE WE FOCUS ON A HARSH CULLING SYSTEM THAT PROMOTES "STAYING POWER".
- **YOU WANT CATTLE** THAT WEIGH BIG, THEREFORE WE STRIVE FOR WIDE-BASED, DEEP-SIDED CATTLE THAT DON'T CARRY EXTRA FRAME SIZE, BUT REALLY DO MASH THE SCALES.
- **YOU WANT CATTLE** THAT ARE EASIER TO HANDLE, THEREFORE WE HALTER BREAK EACH BULL, COMB EACH BULL, AND DO OUR BEST TO ELIMINATE ANY BEHAVIOR ISSUES.
- **YOU WANT CATTLE** THAT ARE GUARANTEED, THEREFORE WE OFFER THE INDUSTRY'S ONLY ROCK-SOLID FULL TWO-YEAR GUARANTEE THAT PROVIDES COMPLETE CUSTOMER TRUST.

**NEXT YEAR'S
DESERT ★ MART SALE
NOVEMBER 17, 2016**

LARGENT AND SONS

Hereford cattle since 1902

P.O.Box 66

Kaycee, WY 82639

10 miles south on I-25

e-mail: largentandsons@yahoo.com

website: www.largentandsons.com

Mark & Cathy: 307-738-2443

Mark's cell: 307-267-3229

Dave's cell: 307-267-4491

Toby's cell: 307-267-1997

Laura's cell: 307-267-6786



DUDLEY BROS.

Box 10 • Comanche, Texas 76442

John: 325-356-3767 • 325-642-0745 - Mobile

Tom: 325-356-3918 • 325-642-0748 - Mobile

Office: 325-356-2284 • Fax: 325-356-3185

Email: John@dudleybros.com • www.dudleybros.com